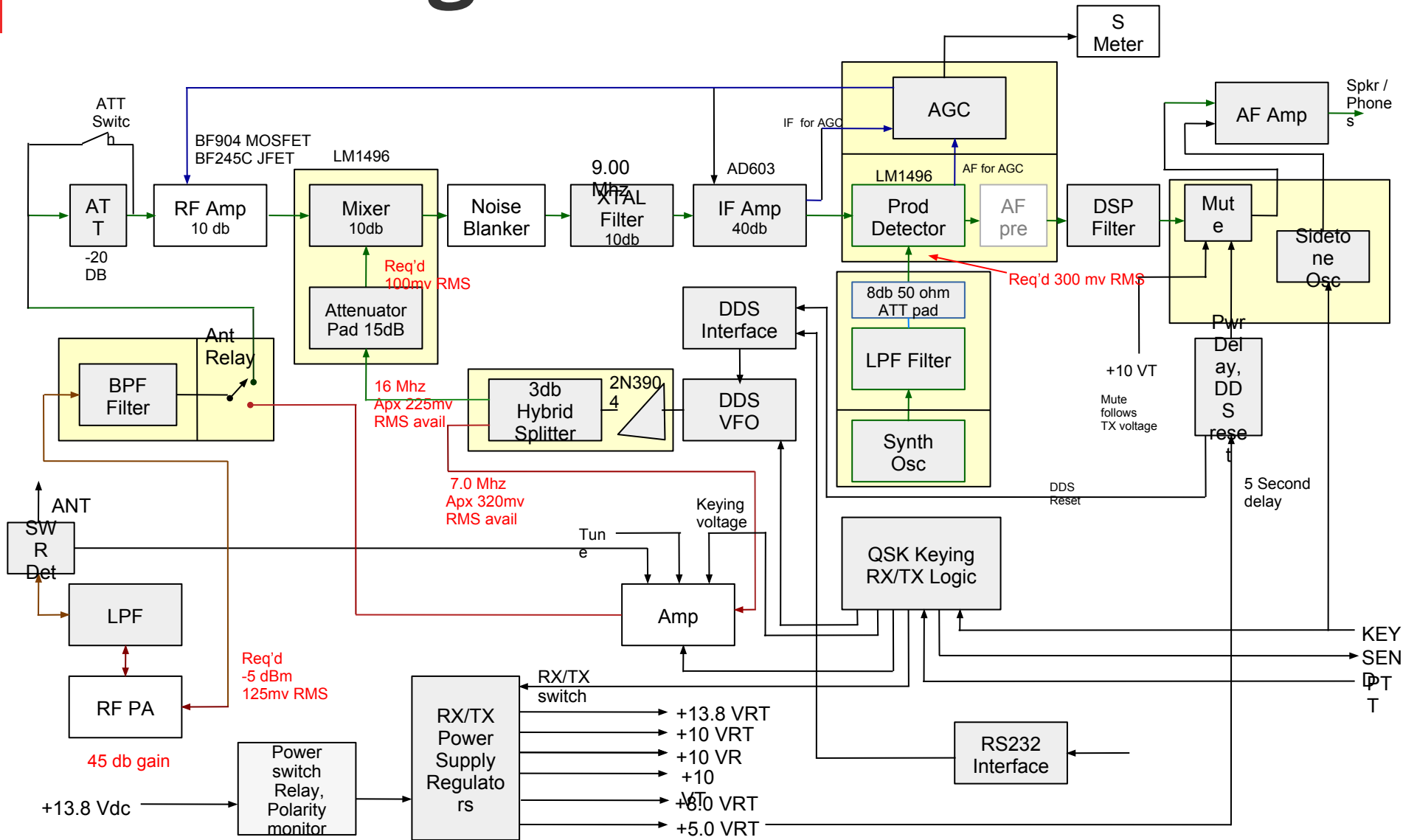


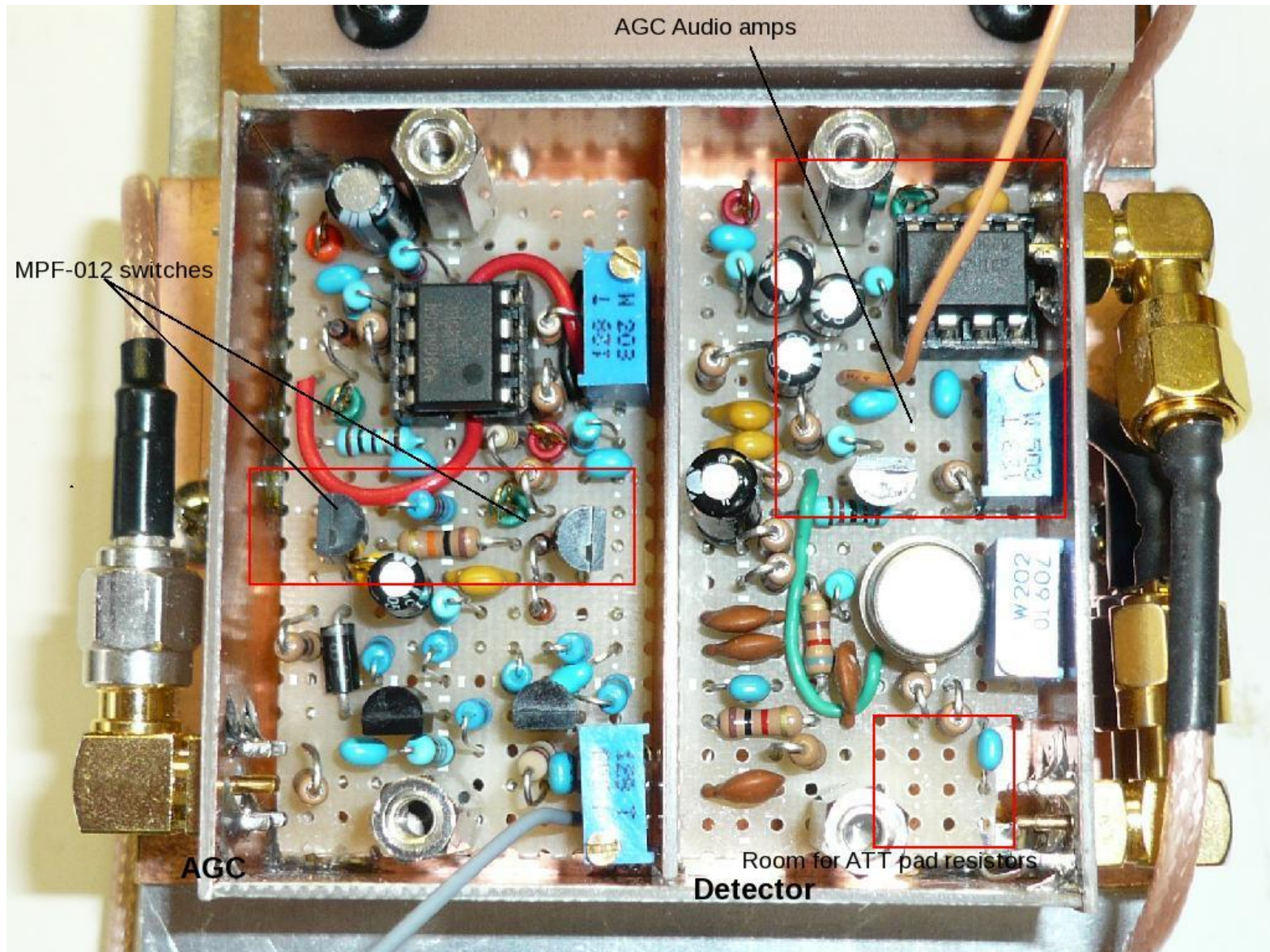
FC-1 update again!

April 20, 2018

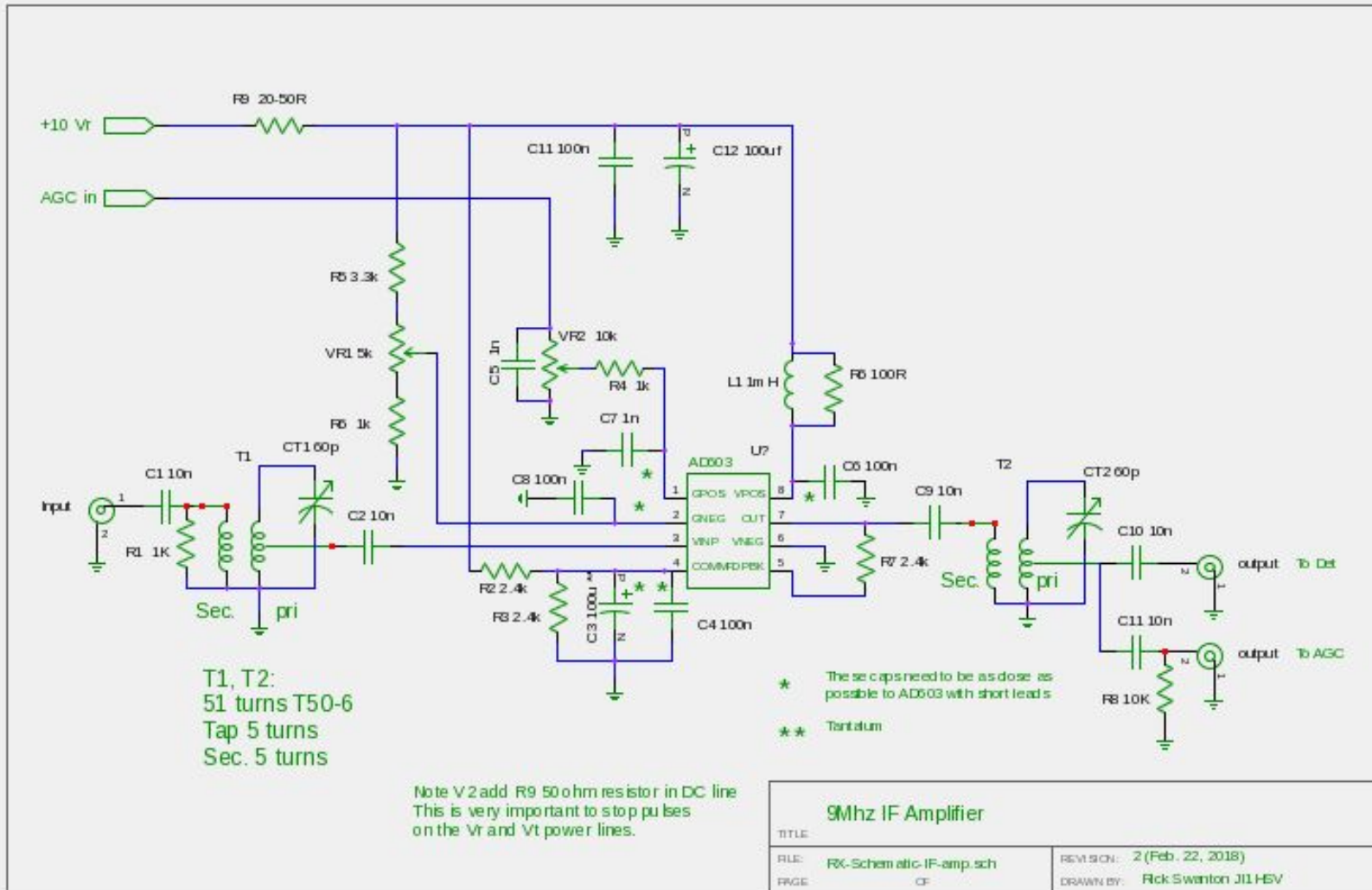
Block diagram



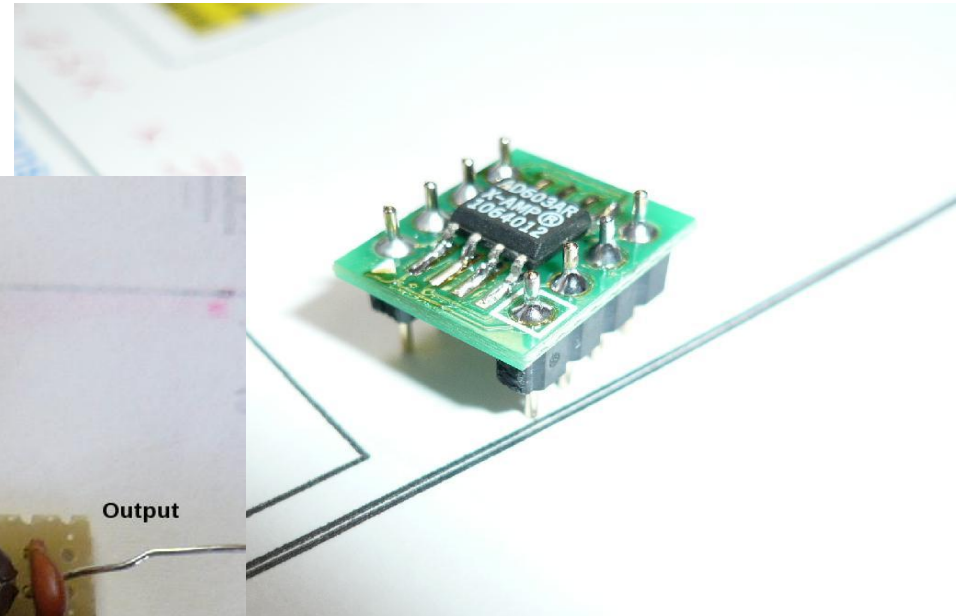
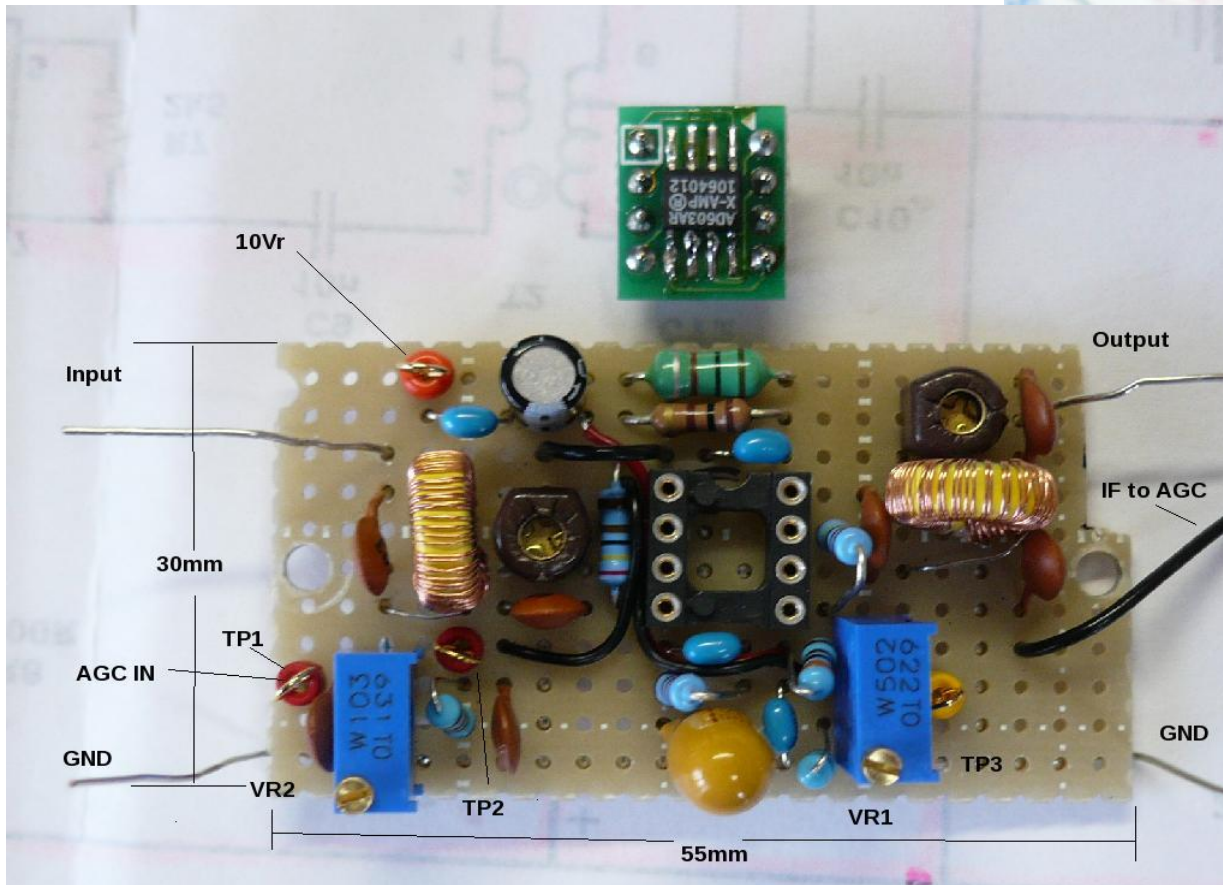
AGC- Detector



IF Amp

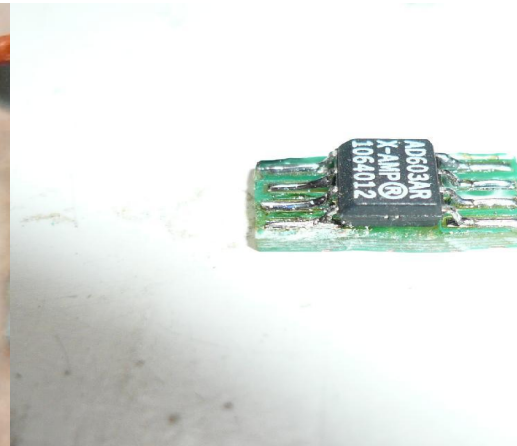
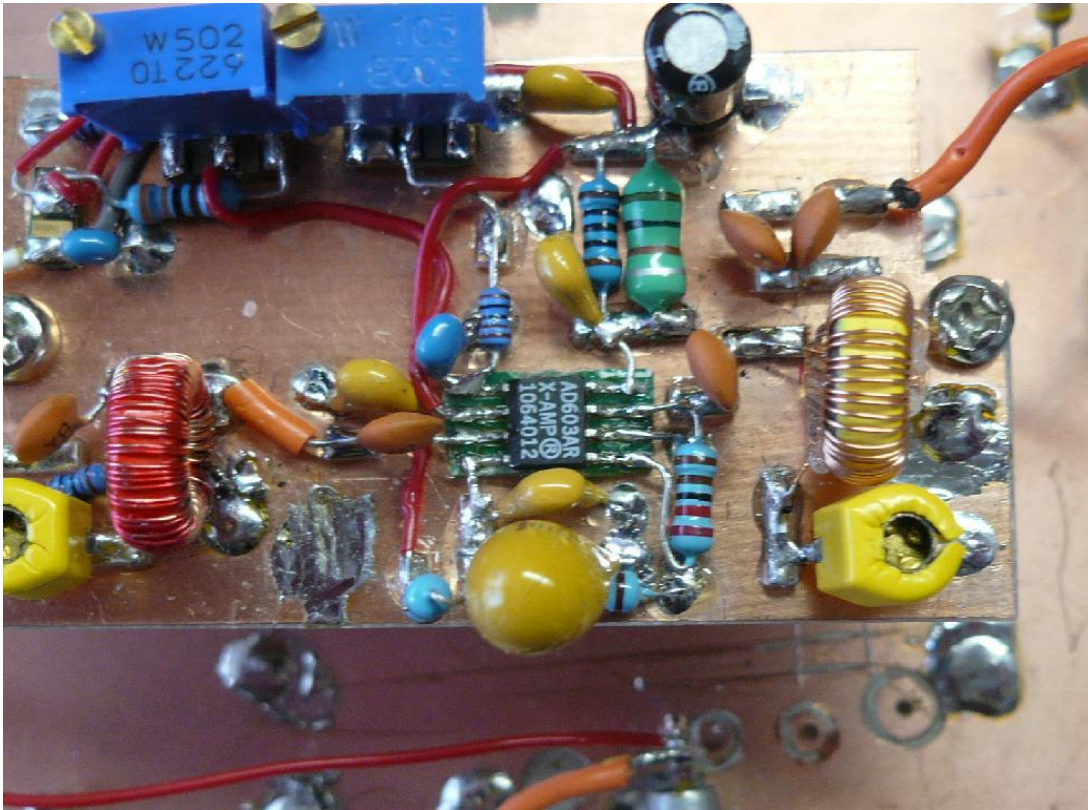


Modules - IF...1st try

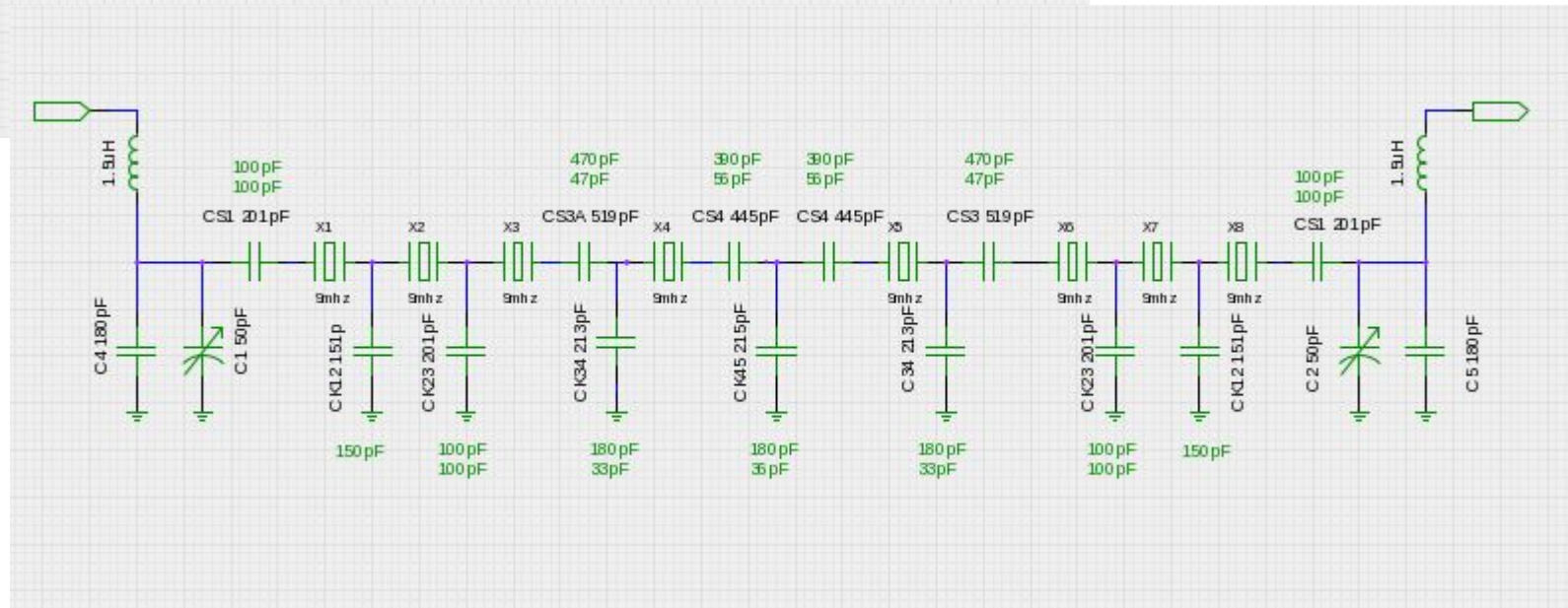
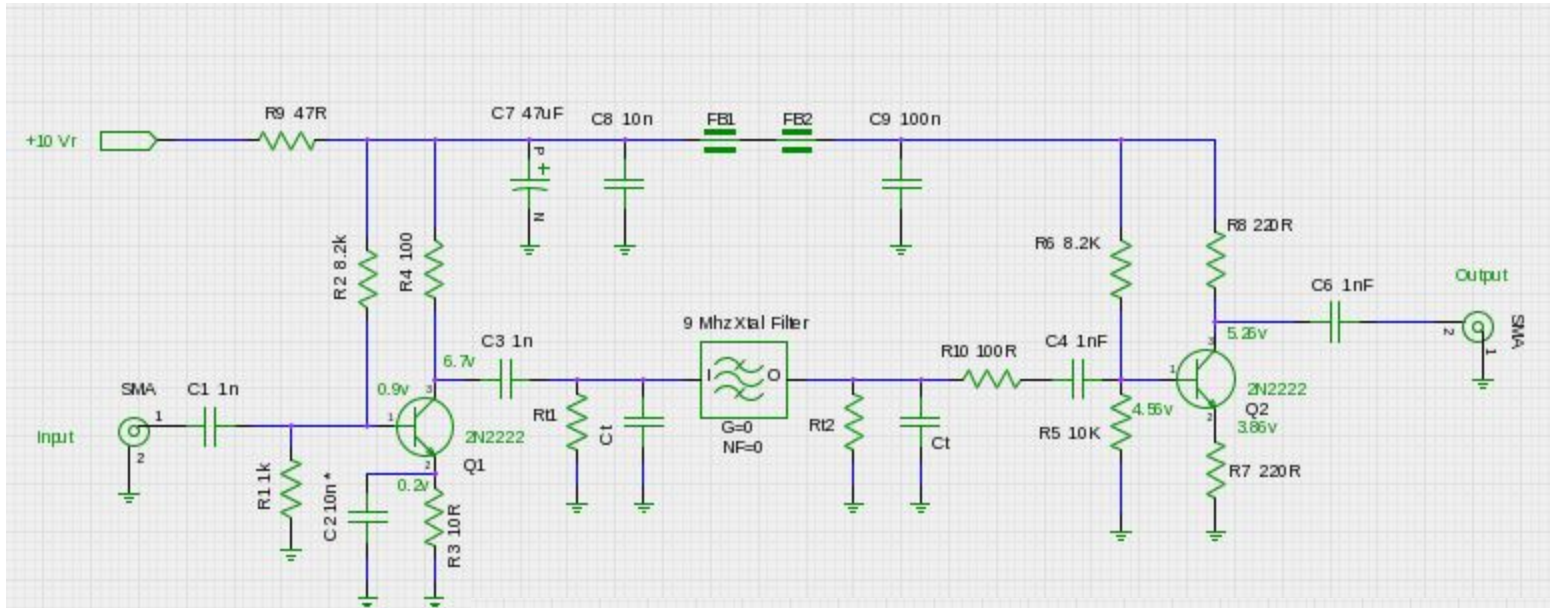


Result.....
Poor amp, good oscillator

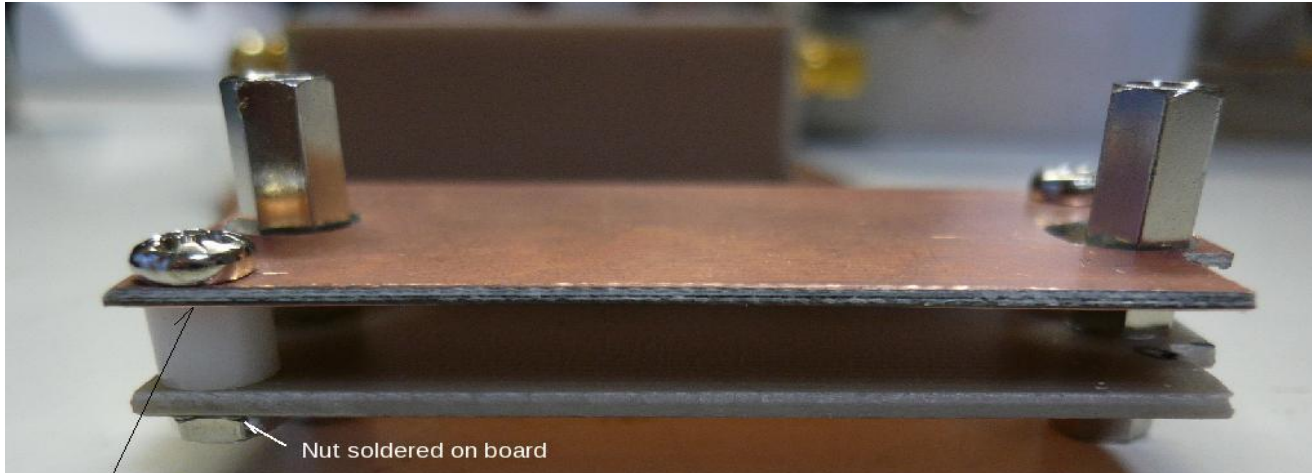
Modules - IF...2nd try



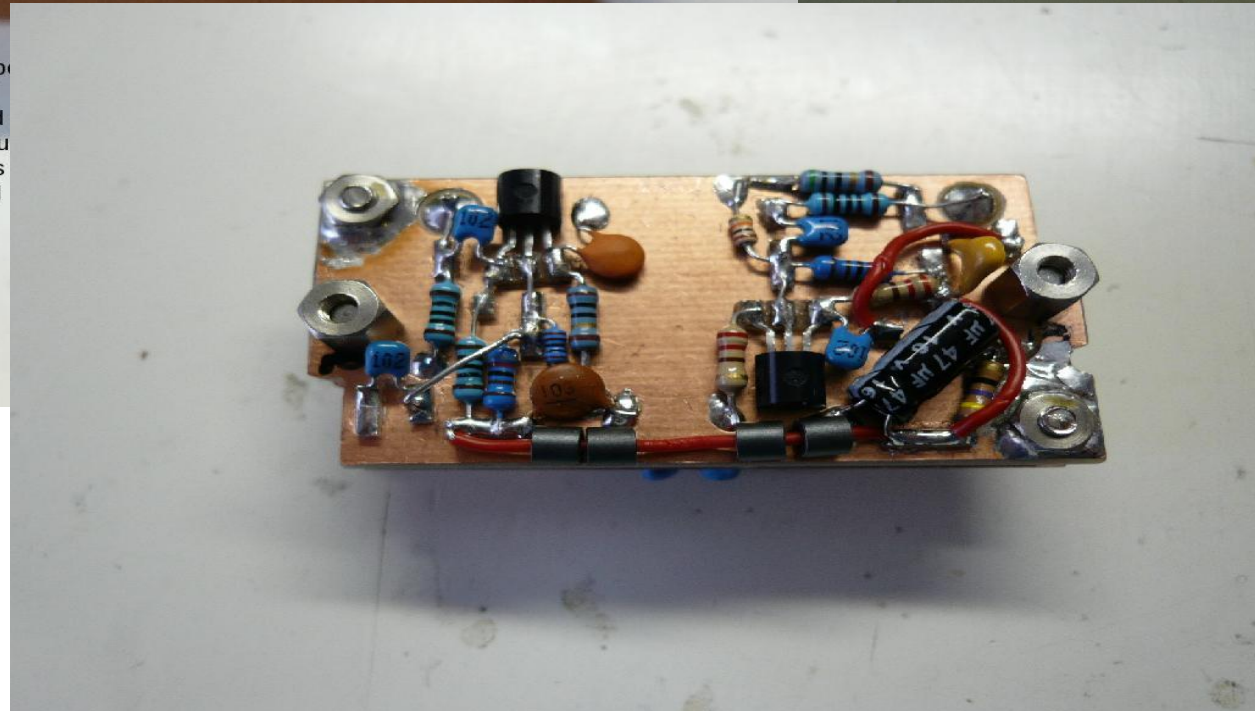
Crystal Filter



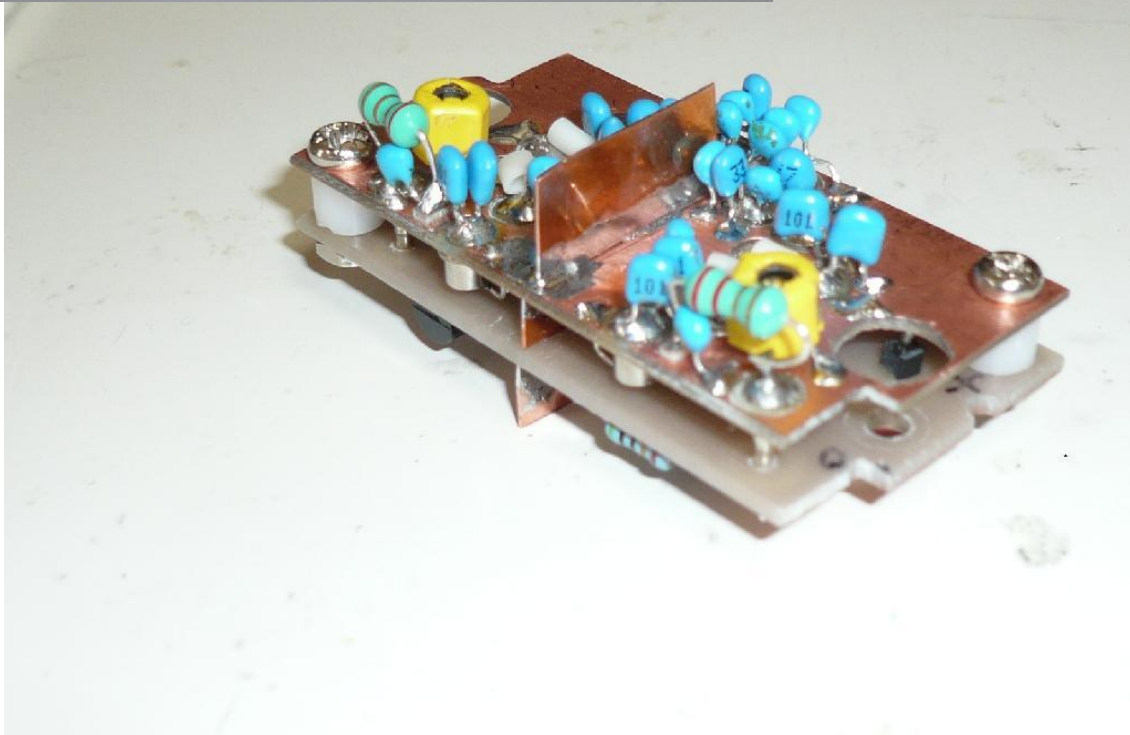
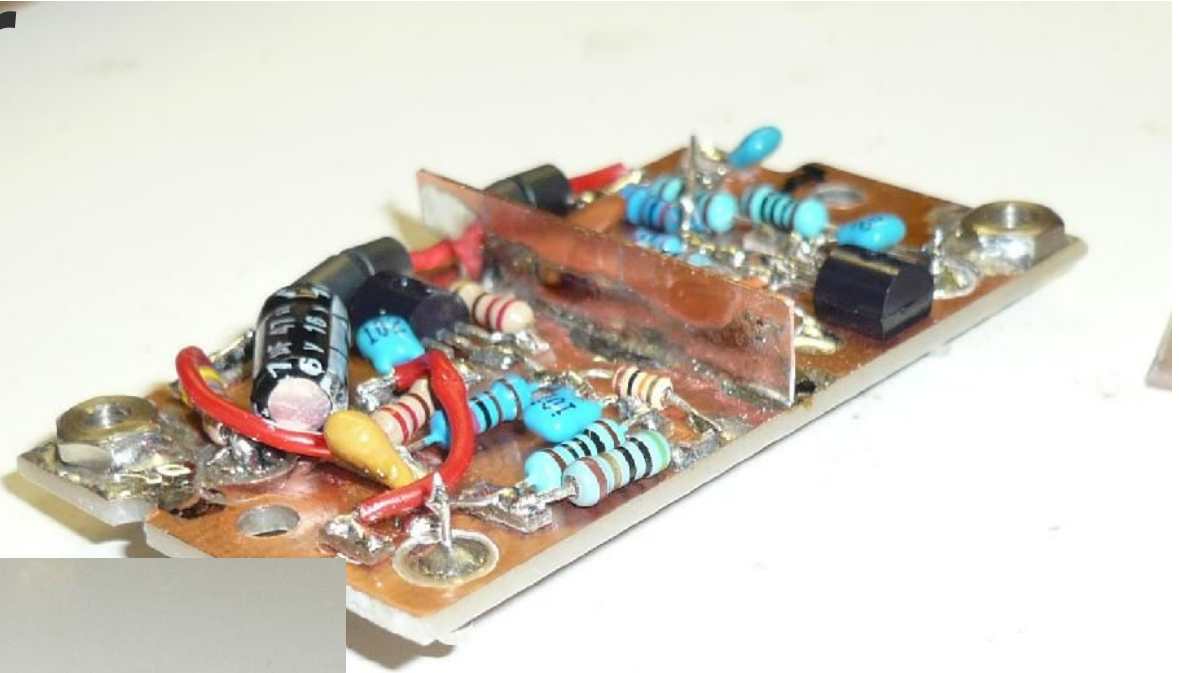
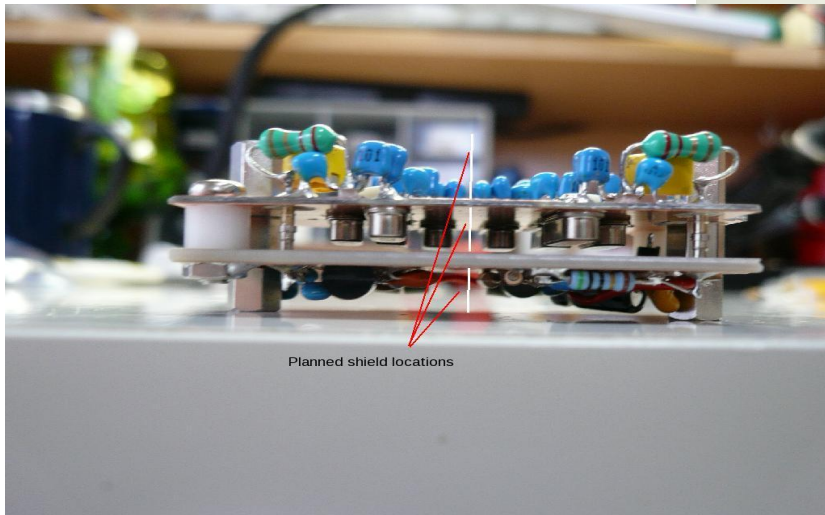
Crystal Filter



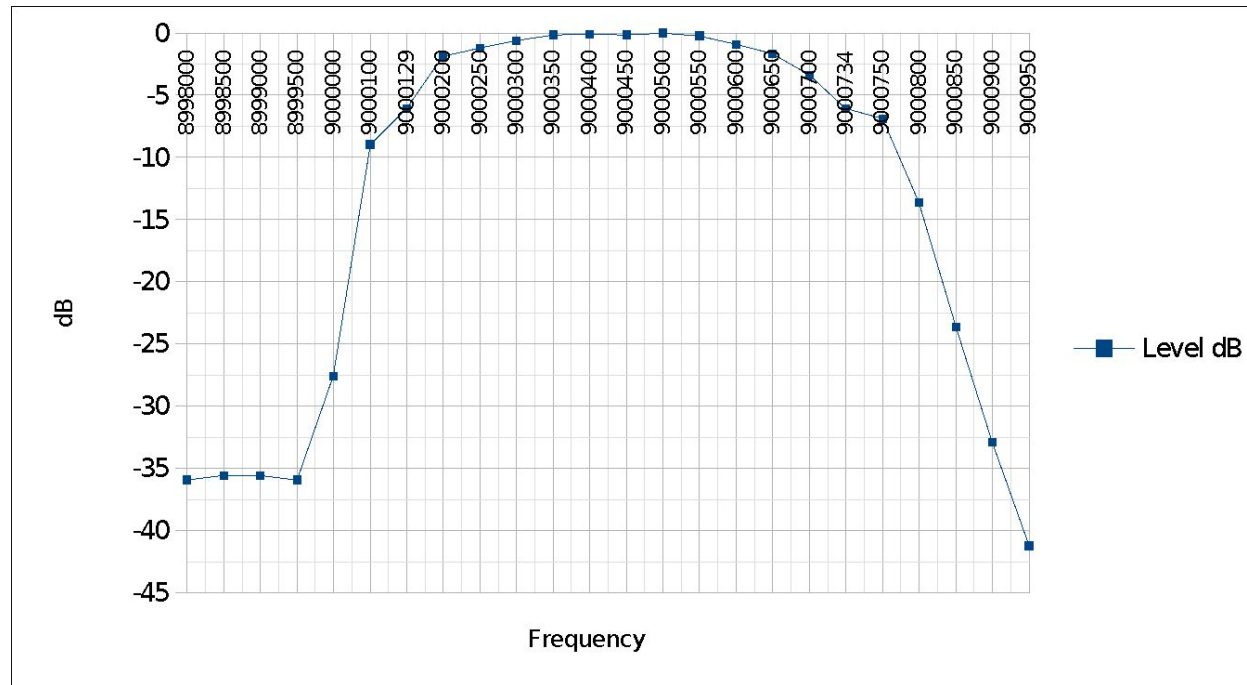
Side view
the bottom board is single layer, copper
and the top is 0.8mm double sided!
I'll add 'vias' to connect the top board
The white spacers will have a bit of solder
to fasten them to the top board so as
it easier to remove the top board and
put it back again!



Crystal Filter



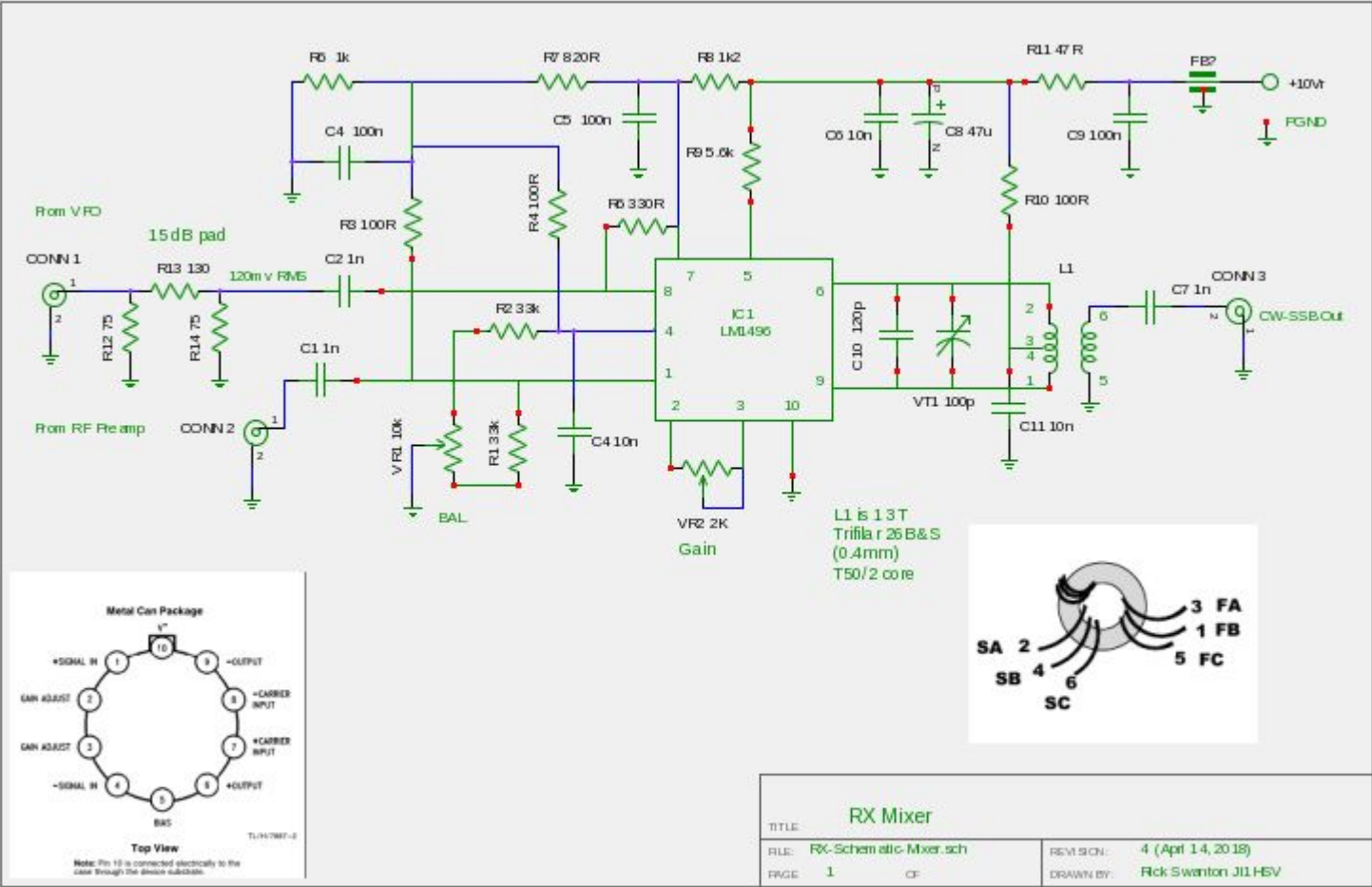
Crystal filter response



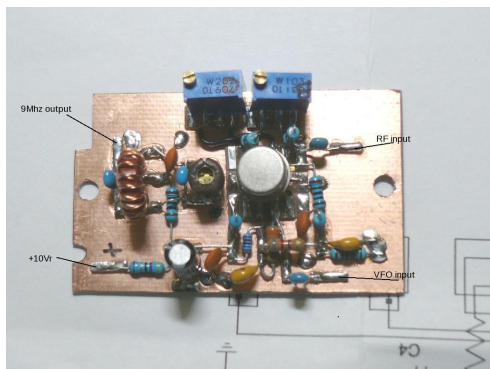
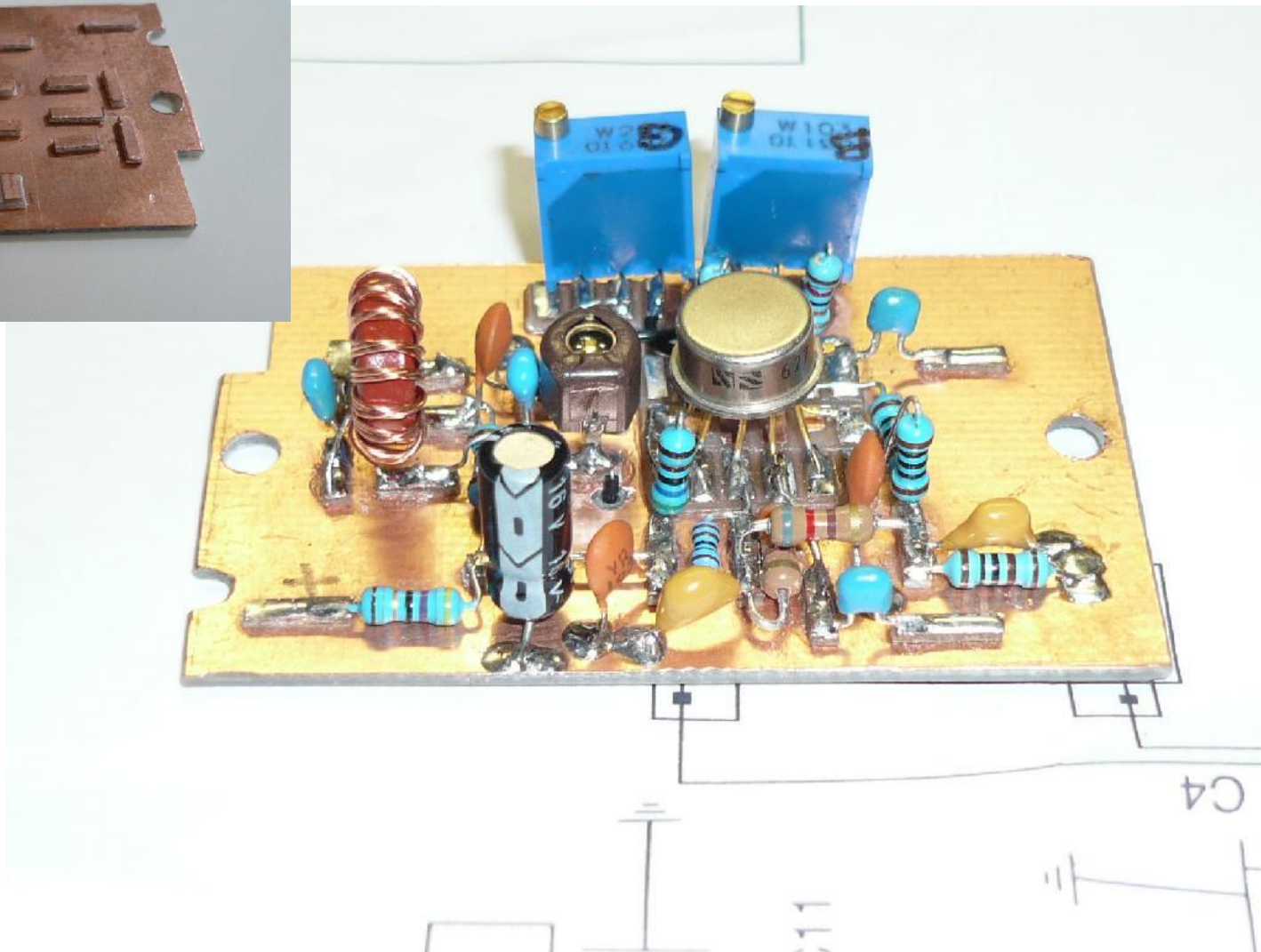
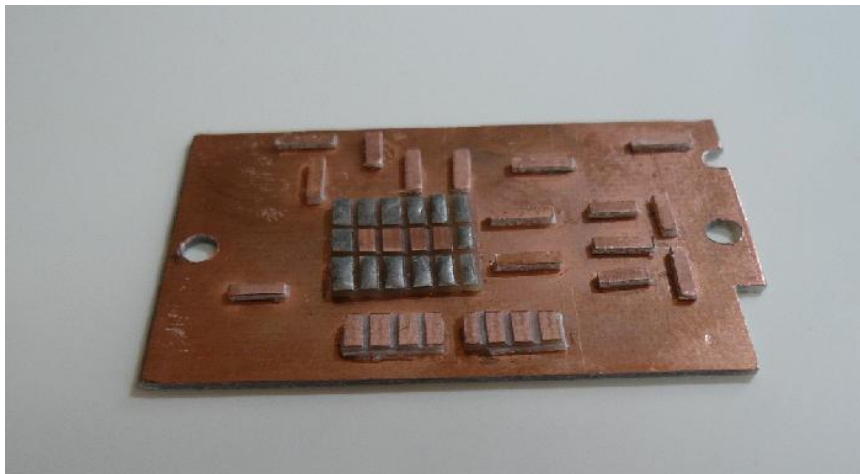
Center Frequency 9.000.432

600 Hz width at -6dB

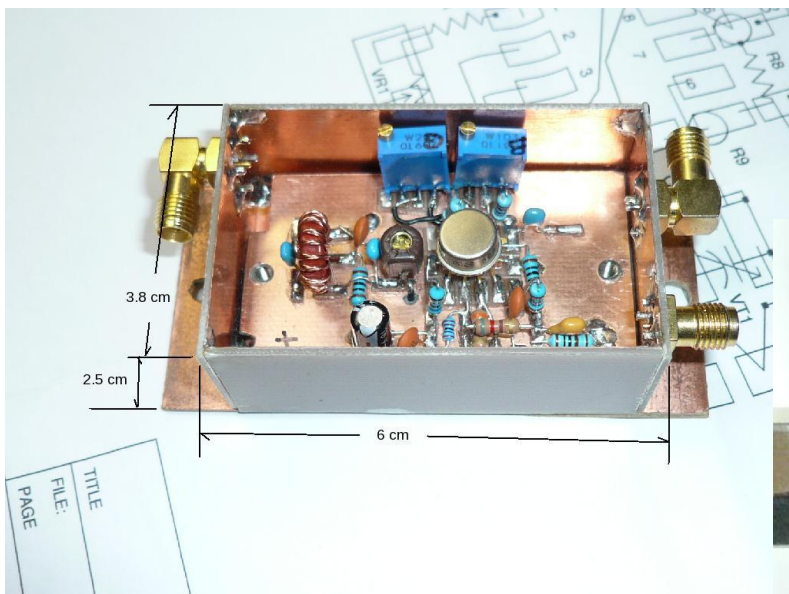
Mixer



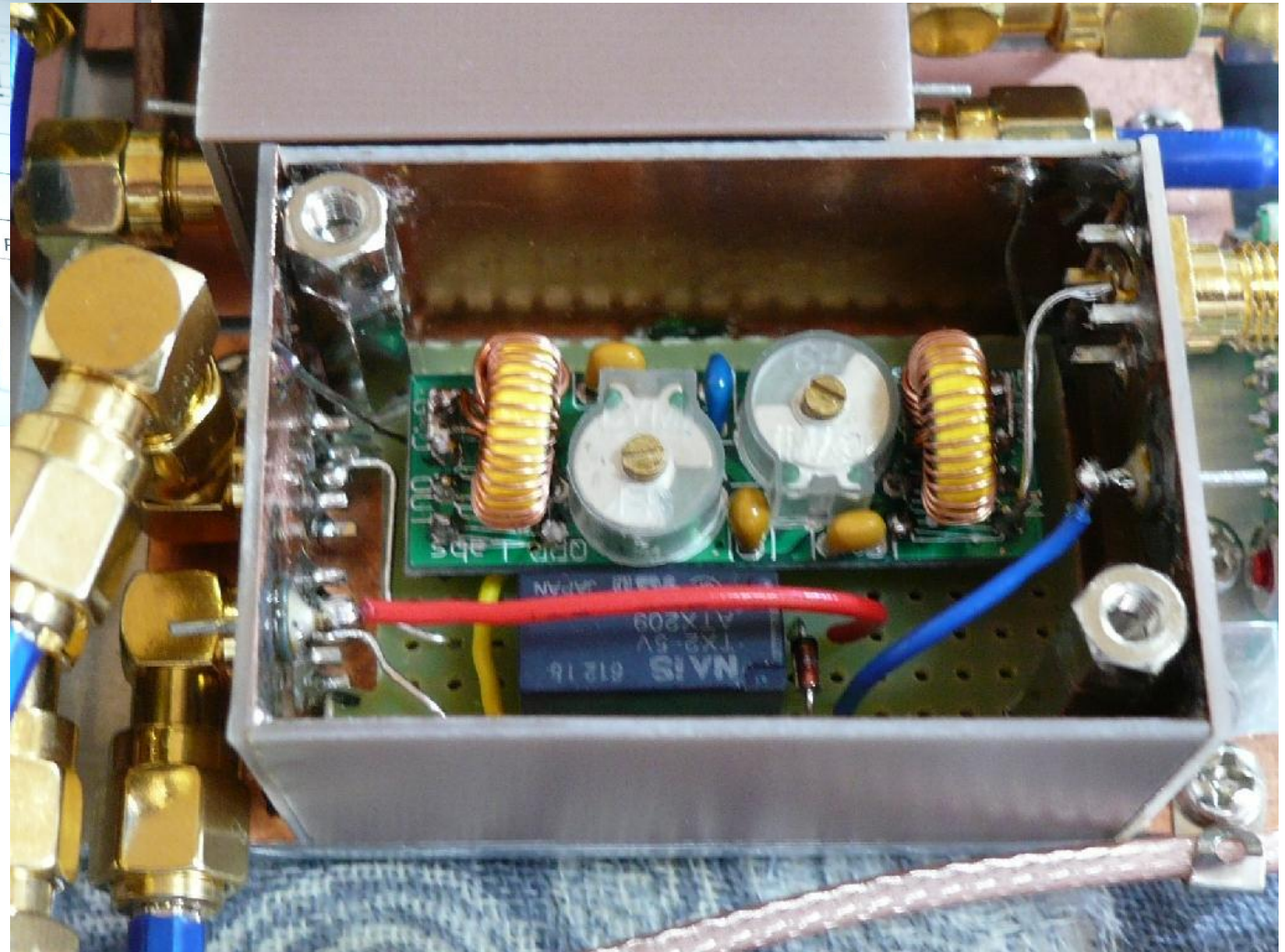
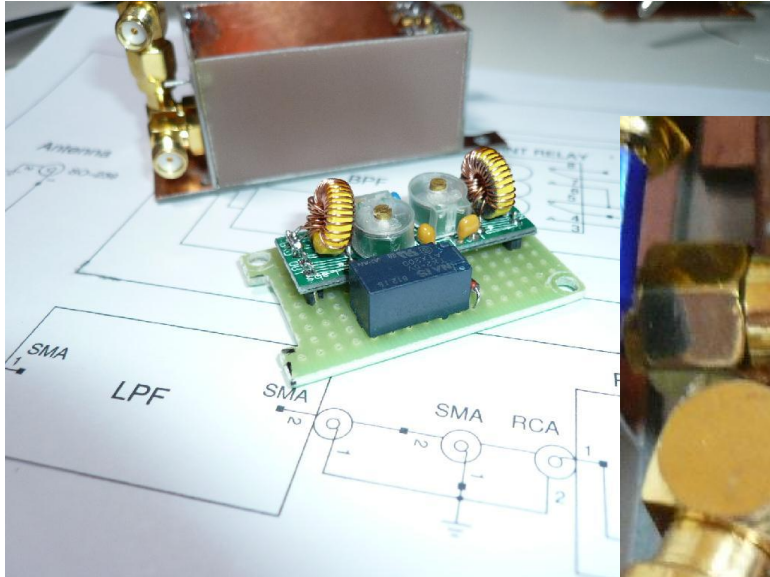
Mixer



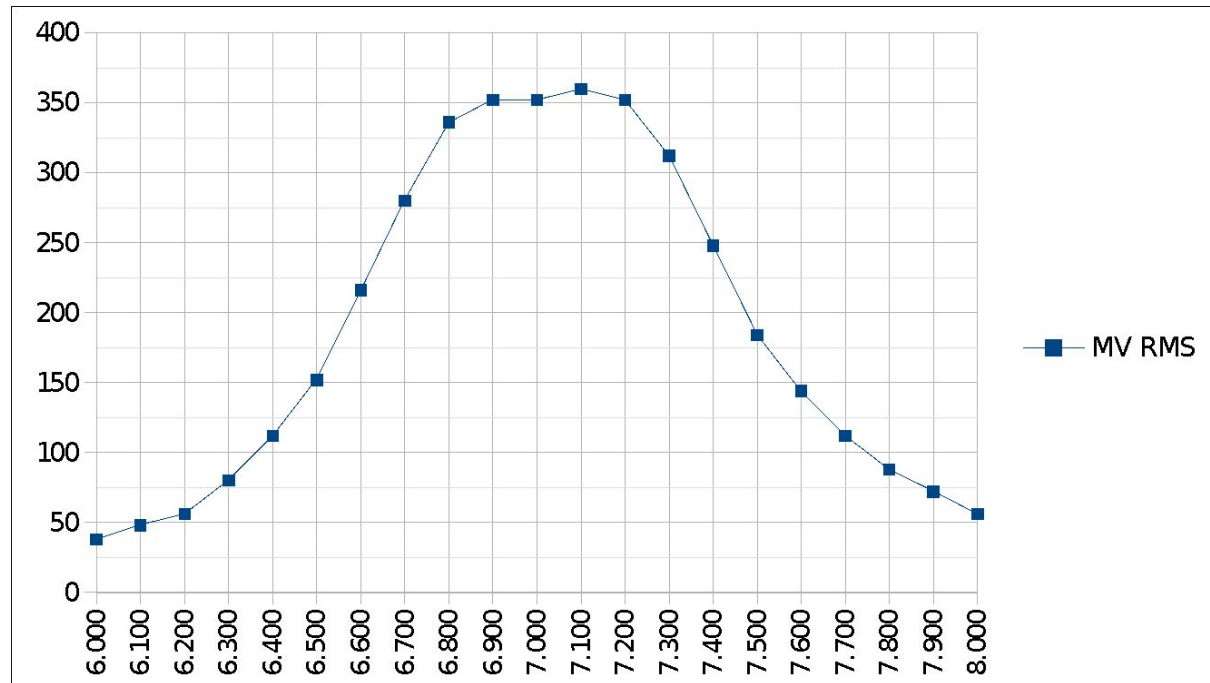
Mixer



Band pass filter



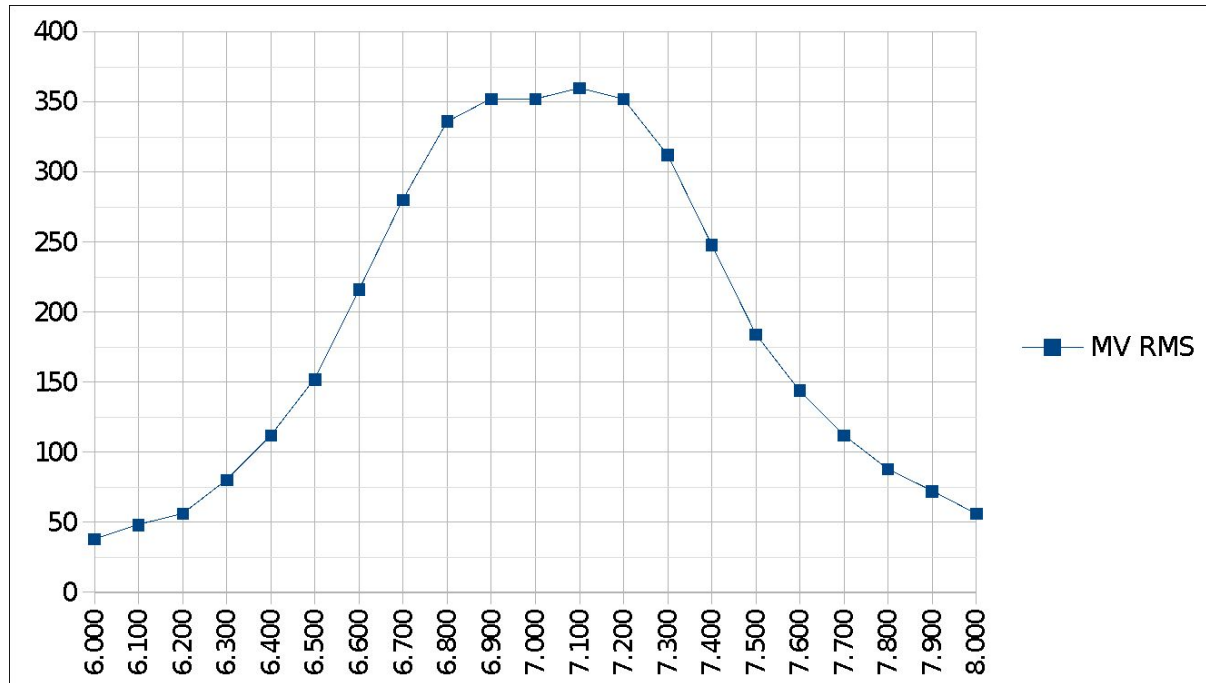
BandPass Filter Response



Low Pass Filter



Low pass Filter Response





QCX Update

Originally audio out..... about 40 ohms thus only earphones (earbud type) no agc = pain!

Added magnetic mount speaker

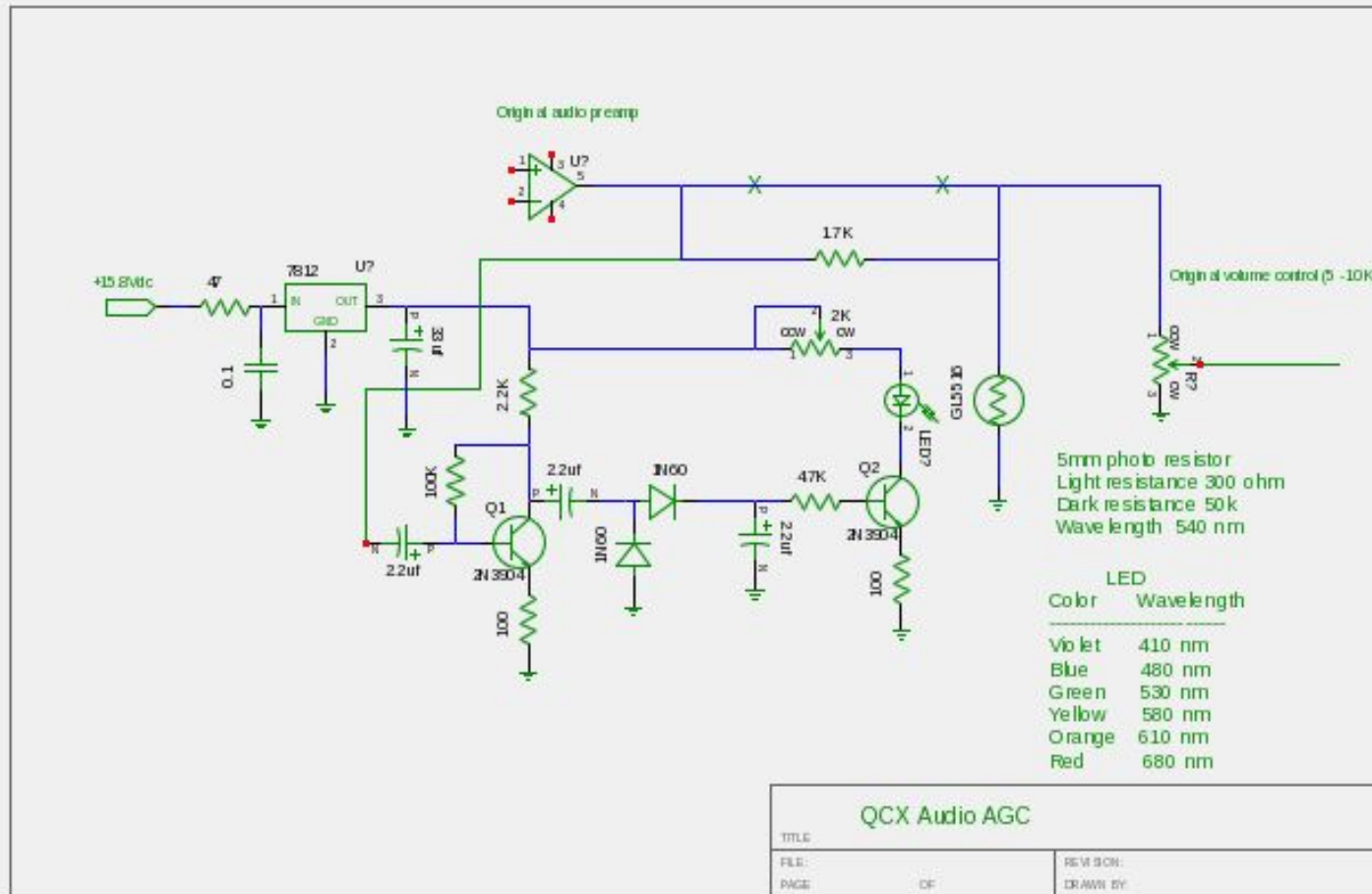
Added audio AGC

Added small audio amp (900mw)

QCX



Audio AGC ... using a LED



QCX



QCX QRP Activity

About 160 QSO,

8 Countries

9 U.S. states

1 Canada province

ARRL CW DX Contest Vs QCX 5 watts and whip antenna

27 QSOs 9 States 1 VE7
660 Points



FC-1 HomeBrew transceiver 2 years and counting!

RX RF amp, TX PA
..... coming



Not "The End" yet!