

## THE BEAM



Summer & Autumn 1967

### THIRD ANNUAL ARMS INTERNATIONAL MEETING

There was lots of excitement on the 3907 net Thursday night of June 22nd as ARMS members from coast to coast converged on the Goshen College Campus for the annual ARMS meeting. Some arrived at the QTH of W9BNI in time to check into the net while Claude made contact with those who were mobile enroute. (It was easy to spot Claude's house by that beautiful quad!— Claude works in Elkhart for W9LZX, "papa of the quad.")

Claude had arranged for lodging in the new College dormitory where everyone enjoyed the excellent accommodations. Fellowship over delicious meals served in the College dining room were delightful interludes of relaxation between busy sessions during the two days of the convention.

A full day of work on Friday with committee meetings was climaxed that evening with a refreshing fellowship program in which Floyd and Millie Lyon from Yarinacocha, Peru showed slides of the radio work at the Wycliffe Jungle Base in Peru. (We especially enjoyed seeing pictures of the various radio operators at the Base with whom we have worked to handle missionary traffic.)



WA6VOR

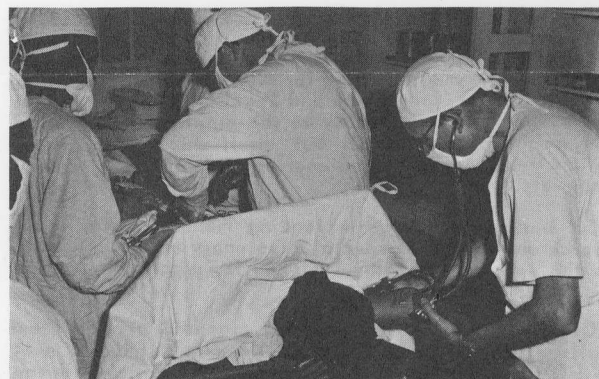
W0LSF

VE3AX

VE3AX, Lloyd Alford congratulates president-elect, W0LSF, Don Petersen; with vice-president, WA6VOR, Amos "Walt" Buckwalter on the left.

W3RVY, Frank Sanson continues as treasurer. Unable to be present was K3RYV, Don Birx, secretary.

### RADIO "LIFELINE" IN THE CONGO



K8MZG/9Q5GF, Dr. Eschtruth (center) operating

Dr. Glen J.R. Eschtruth and his wife have been stationed at the Piper Memorial Hospital at Kapanga in the Southern Congo for the past four years. Dr. Eschtruth has been the only medical doctor in an area the size of Michigan and Indiana. During his time in the Congo he was frequently cut off from the outside world due to the tribal wars and political unrest. He built radio equipment and installed it at all of the Southern Congo mission stations and established a "lifeline" of communications between all the mission stations. He has been able to call for help to get assistance for mission stations that were under attack by soldiers, or give medical consultation to isolated mission stations over this radio link.

*"We praise the Lord for the continued help in giving us courage and grace to go through these difficult days. We appreciate prayers more than anything else during these days. Strength for the coming days is via this prayer linkup. May the Lord bless and keep you all. I would really like to talk with some of the ARMS gang, especially the medical group. I have daily schedules with W9HSP or W9ARK on 21,385 kc. at 1800 GMT."*

### NOTICE!

ARMS has lost the headquarters at Philadelphia College of the Bible, 1800 Arch Street. K3CBM was removed to allow for expansion and remodeling.

Please address correspondence to ARMS secretary:

Dr. Donald L. Birx, K3RYV  
119 Ridgefield Road,  
Newtown Square,  
Penna. 19073

## IN THE BEGINNING

Missionary Communications Service was incorporated in California in 1953 by Jim Vaus, Jr. as a mission board for the purpose of meeting the urgent need for communications facilities in isolated mission fields. Jim Vaus served as president. Other board members were Lorne Sanny, president of the Navigators; Dr. Edman, Wheaton College president; William Nyman, secretary Wycliffe Bible Translators; and Dr. Clyde Taylor, secretary of Affairs of the National Association of Evangelicals.

MCS envisioned a world-wide radio communications network linking (1) isolated missionaries with their own local base; (2) the various fields with their own local base; (3) foreign operation with the U.S.; with the desire to see every missionary reach other missionaries or contact headquarters through radio as quickly as we at home reach our telephone operator, and with the goal to provide equipment to missionaries where no other means of modern communication exists.

Prior to the founding of MCS, Mr. Vaus had used electronic equipment in the pulpit "to win a hearing for the Gospel," and now he traveled extensively using the same unique equipment to "win a hearing for the missionary." With the SSB transmitter, fone-patch and Speak-o-phone he brought the voice of the missionary to the pulpit, demonstrating not only intercontinental but interfield communication which links isolated missionaries with a doctor, supply base, etc.

MCS worked closely with leading manufacturers in research and design of special missionary equipment, such as the special generator designed for rugged use on the mission field.

MCS's first station was K2GQG, located at Houghton College, Houghton, N.Y. Mr. Vaus visited Africa to meet with government officials, coordinate MCS policy with the various mission boards and governments, and inspect out-post sites where authority had been granted to install MCS stations. Ray Isbell, W7SCA, Seattle, was the first MCS candidate to reach the mission field. Ray and his wife served under MCS in collaboration with JAARS at Yarinacocha, Peru, Wycliffe's Jungle Base.

MCS was later consolidated with Missionary Engineering, Inc. and the headquarters moved to Colorado Springs near the Navigators Headquarters for increased effectiveness in training its missionary candidates.

In 1959 Missionary Engineering, Inc. took over the work of MCS by supplying communications formerly handled by Missionary Communication Service. Both organizations agreed on this change because of ME's greater technical experience, better understanding of field problems, and new financial policy to make possible placing more equipment on the field. ME headquarters were located on an 80 acre ranch in the mountains where mission field training and orientation were carried on, as well as technical development and construction of communication equipment for the field. ME sought to meet the need for mission field communications by maintaining a net at noontime daily except Sunday. The station was K0OHR.

Before long most of the personnel were serving on the field, so Missionary Engineering was integrated with with Missionary Aviation Fellowship at Fullerton, Calif.

Because of the tremendous task at hand with a limited staff, MAF has little time for radio contacts except briefly with several of their pilots on the field. JAARS headquarters is using radio and autostart radioteletype for increased efficiency. The strides in this area are fantastic as electronics are used to speed the Gospel!

Ed. Note: Thanks to Harry Baumgarten, W9KWJ, for the above information about MCS and MEN. Harry was active with the Missionary Engineering Net and the Moody Amateur Net.

## "WITHOUT A VISION THE PEOPLE PERISH"

These remarks by Dr. Coder from the October '57 issue of CRAN are truer than ever today. "Modern communications is having a remarkable effect in spurring world-wide evangelization. There has never been anything like what we are seeing today, and it would appear from Isaiah 52:10 and Mark 13:10 that the end of the age is near."

Meanwhile, in 1957 a group of born-again amateur radio operators in the Philadelphia area organized the Amateur Radio Missionary Service under the leadership of Dr. Wm. Mierop, then president of Philadelphia College of the Bible, to form a communications network, meeting on the air for Christian fellowship and coordinating their efforts to provide communications for missionaries via amateur radio.

This volunteer network has grown to include over 400 members across the USA and in 13 foreign countries. ARMS stations are providing the link between the mission field and the home front by maintaining radio schedules with missionary amateur radio stations and with other stations available in those countries where government regulations permit passing messages to third parties.

Urgent messages to mission board offices have often saved the day. Several mission boards operate amateur radio stations from their headquarters for a direct contact with the field.

ARMS members have helped train missionaries to provide them with the technical knowledge necessary to operate a radio station on the field. Some ARMS members have had the opportunity to assist in establishing Gospel broadcasting stations abroad and a number of them are using their talents as engineers and technicians to operate Gospel broadcasting stations at home and abroad. ARMS membership now includes most of the remnant of the Missionary Engineering Net and the former Moody Amateur Net.

ARMS members are involved in many different phases of the art of radio communication, the scientific investigation of radio and its allied sciences as they apply to the furtherance of the Gospel and the kingdom of Christ.

## VITA ON THE AIR.

(Volunteers for International Technical Assistance)

The Santa Barbara chapter of VITA (Volunteers for International Technical Assistance) are on the air to monitor for calls from missionaries who request technical assistance from Data International. VITA stations monitor the frequency on 21.410 mc. at 1830Z - 1900Z. Listen for these VITA stations: - WB6IFK and WB6JQL on Tues. and Fri., WA6THG on Thurs.

## ARMS Motto:

"...let us do good unto all men, especially unto the household of faith." Galatians 6:10.



The ARMS BEAM

published by the

Amateur Radio Missionary Service

Editor: Mary Rittgers, K0ELX



The incorporation report was given by Bob Dickinson, who is serving with Trans World Radio, Chatham, New Jersey. We are grateful to Bob for all his time and effort in working with Attorney J. MacLean of Camden, New Jersey in the big task of preparing a proposed Constitution on which W2RJQ, Van, former ARMS president from New Jersey had also spent much time with the assistance of others in the Philadelphia area.

W2CCE read the Articles of Incorporation as they were drawn up May 20th, 1965 under the laws of the state of New Jersey. Then the revised Constitution was read and each article and section considered separately. Some changes were made in wording to more clearly convey the meaning intended, and were otherwise adopted with the idea in mind of making a copy available to each member to review and make suggestions to the officers during the year of any desired changes to be brought before the next annual meeting.



**W9LZX, Clarence Moore, banquet speaker, visits with ARMS president, W0LSF, Don Petersen.**

Don is an architect for the Iowa Highway Commission, and a member of the Christian & Missionary Alliance. His wife, Pauline, was formerly a missionary nurse in Liberia and the Virgin Islands. Don is a charter member of Midwest ARMS.

WA6VOR, Amos "Walt" Buckwalter, Upland, Calif. drove the second leg of his journey all the way from Oklahoma City, arriving in Goshen at midnight to be able to attend the ARMS meeting on the way to his church conference in Ohio. (Walt and his wife Alice got enough code practice in on the trip so that she was able to pass her general and is now the proud owner of the call, WA6YPA!--another y! for ARMS!

### THIRD ANNUAL ARMS INTERNATIONAL MEETING

The third international business meeting of the Amateur Radio Missionary Service convened at 9 am June 24, 1967. Sessions were held in the privacy of the spacious rustic College Cabin by the lake, a lovely site. Bob Dickinson, ARMS vice-pres. strung up an antenna and operated W2CCE/9 for contacts with members who could not attend. (One of the best skeds was with CP8AU, Cliff Greene in Bolivia.)

ARMS president, Lloyd Alford, VE3AX, presided at the morning session which opened with prayer for the work of ARMS and for guidance in the decisions of the meeting. Minutes of the 1966 annual meeting at Winona Lake were read by secretary Mary Rittgers, K0ELX. Treasurer Frank Sanson, W3RVY reported that this year ARMS has been able to meet expenses which have been mainly incurred by the printing of the BEAM.

A report of the work of WB4BLK Duke University Med Aid (MAID) in aiding isolated doctors was read. WB4BLK, the station of the Duke Medical Center Amateur Radio Club, is manned daily and listens continuously on a frequency of 14.250 mc. Consultant doctors at Duke Medical Center will answer inquiries from the telephone nearest to them. Phone patch connects them to the radio transmitter and receiver so that he can communicate easily with the missionary doctor. Tape recording equipment is also available so that messages can be recorded and re-transmitted at a later time if it is more convenient to do so. Teletype equipment is being installed. Soon another service is being added which will make possible sending electro cardiograms by radio with a unit that plugs into the EKG machine and produces an FM tone that is sent by radio for computer analysis.

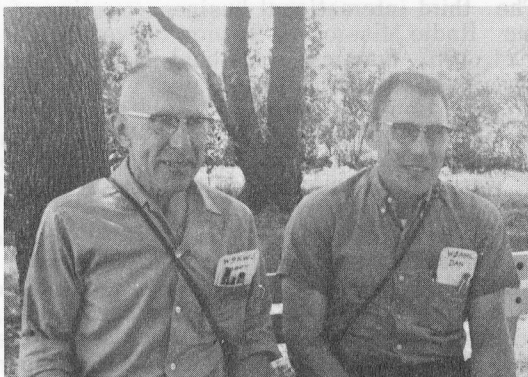
Forty were present for the ARMS 10th Anniversary Banquet Saturday night at the close of the annual meeting. The children had their own banquet at the home of W9BNI followed by a story hour which they all enjoyed very much. W9LZX, Clarence Moore, of Crown International, Elkhart, Ind. was the guest speaker.



**W2CCE visits with W9BNI, Claude Beachy and his xyl, Edna at the 10th anniversary banquet.**

*Our many thanks to Claude and Edna Beachy for their warm hospitality in hosting the annual ARMS meeting, and thanks to Goshen College for the fine facilities they so graciously made available to us.*

## CENTRAL SECTION FORMED



W9KWJ, Harry Baumgarten and son Dan, W8IHY

W8IHY, Dan Baumgarten, Grand Rapids, Michigan, has been appointed as temporary chairman of the new Central Section which includes the Great Lakes region, Kentucky and West Virginia. W9BN1, Claude Beachy is serving as secretary. Dan was formerly at Collins Radio, Cedar Rapids and was one of the charter members of the Midwest ARMS Section. He also was active with the former Missionary Engineering Net and the Moody Amateur Net. It is hoped that the formation of an organized Central Section will result in increased activity in the Great Lakes area for more solid communications and to better serve missionaries with traffic into those metropolitan areas.

## SUMMER WITH "THE VOICE OF THE ANDES"

Tom Adams, K8CUC, and Bill Evans, WA8RYW were among the group of young people who had the thrill of spending the summer in Quito, Ecuador helping at HCJB. Tom's call was HC1XB and Bill's call was HC1XC. Tom's experience on a local Detroit station qualified him as radio news director. He did the program "Ecuadorian Echoes" and the "DX Party Line", as well as some announcing on TV. Tom helped out during the earthquake by handling emergency traffic for the government officials whose only source of communication was ham radio. Keith Magill, a senior in electronics at Purdue, also devoted his talent this summer helping prepare for the installation of the new 100,000 watt transmitters. Through these experiences these young men felt the thrill of involvement in the Great Commission in this opportunity to help in the ministry of spreading the Gospel to the far-flung corners of the earth.

The present list of members was adopted as the list of charter members, with a resolution to give each member one year of grace to renew his membership by paying his current dues. Every paid up member is entitled to receive the official publication, The ARMS BEAM. Subscription to non-members is \$2/yr.

Regular Membership \$2/yr.  
Associate Membership \$2/yr.  
Missionary exempt

Frank S Sanson, W3RVY  
P.O. Box 146  
Bethany Beach,  
Delaware 19930

## WA4PXR CALLS NOONTIME NET ON 21.390.

WA4PXR, Don Wennerberg, optometrist in De funiak Springs, Florida, calls a noontime net at 1900 GMT on 21.390 mc. Missionaries call in from all over South and Central America. Liberia checked in with emergency traffic one day. Don operates efficiently and makes every minute count, one of the reasons why this net is growing in popularity with missionaries who generally have a very limited time to operate, yet like to get their traffic through promptly as possible.

## ARMS NETS

Mon	1200Z	Eastern Section	3.907
	1245Z	Midwest Section	
Tue	1200Z	Intercontinental	14.080 RTTY
	1500Z	Transcontinental	
Wed	1200Z	Eastern Section	3.907
	1245Z	Midwest Section	
Thu	1200Z	Intercontinental	14.080 RTTY
	1600Z	West Coast Section	3.915
Fri	Thu Eve (Standard Time)		
	0100Z	Midwest Section	3.907
	0130Z	Central Section	
	0200Z	Eastern Section	
		Cross Country	
	1200Z	Eastern Section	3.907
	1245Z	Midwest Section	
Sat	1330Z	W8QIY NCS	7.236
	1430Z	Midwest Section	3.907
	1600Z	Rocky Mt. Section	3.915
	1900Z	West Coast Section	3.915
Dly	1900Z	Intercontinental (WA4PXR, NCS)	21.390

## PLEASE SEND YOUR MISSIONARY SKEDS TO:

Communications Manager -

K2AXO, Jack Buck  
Box 163 - Prospect Road  
Centerport, Long Island,  
New York 11721.

MISSIONARY SKEDS			ADDITIONS & CHANGES	
SUN	1200Z	3A2CQ	W2CCE	14.065/14.045
SUN	1930Z	PZ1CF	W2CCE	21.320
MON	1130Z	3A2CQ	W2CCE	14.065/14.045
MON	1300Z	EL2F	WB4BLK	21.432
TUE	1200Z	VK9GN	K1GUR	14.190/14.325
TUE	2330Z	HC1BU	W2CUH	21.360
WED	1130Z	3A2CQ	W2CCE	14.065/14.045
FRI	1130Z	3A2CQ	W2CCE	14.065/14.045
FRI	1300Z	EL2F	WB4BLK	21.432
FRI	2330Z	HC1BU	W2CUH	21.360
SAT	1200Z	3A2CQ	W2CCE	14.065/14.045
SAT	1200Z	VK9GN	K1GUR	14.190/14.325