

## THE BEAM



MAY, 1968

### K2CAC, Al Smith to Host Annual ARMS Meeting on Houghton College Campus

The 1968 annual meeting of the Amateur Radio Missionary Service will be held June 28 and 29 on the Houghton College Campus in western New York. Houghton is in the Finger Lakes area, noted for its magnificent scenery, 50 miles from Rochester, N.Y. and 50 miles from Niagara Falls. It is an ideal place to make as part of your family vacation while you take in the ARMS meeting. There promises to be a large turnout this year, and we're looking forward to the greatest fellowship ever!

Campus accommodations are reasonable:

Room	\$2.50	1st night
	1.00	2nd night
Meals	.55	Breakfast
	.80	Lunch
	1.35	Dinner
	1.75	Banquet



Please send your reservations to:

**Allen R. Smith, K2CAC**  
**Box 175**  
**Houghton, N.Y. 14744**

### MID-ATLANTIC COOKOUT PLANNED FOR SATURDAY, JUNE 8!

A cookout and meeting with election of officers will be held June 8th at the home of John Adison, WA2RCP, 811 Heritage Road, Cinnaminson, N.J. 08077. John will be back from his vacation in Hawaii by that time. Guest speaker will be Edwin Yoder, WB2AZZ. Everyone is looking forward to having a wonderful time.

If it has been a long time since you attended an ARMS meeting, this would be a good chance to renew friendships for old times' sake and to get back into the stream of things again. All ARMS members from 2 and 3-land are cordially invited.

Drop a note or radiogram to WA2RCP, saying you plan to attend, or contact K3EGP, Ralph Blakemore, 70 Upland Road, Levittown, Penna., 19056. (tel. 215-946-7111.)

### ARMS STATION FURNISHES "MISSIONS HOT LINE"

The Family Radio Network, California, began a new "Missions Hot Line" utilizing direct, taped reports from mission agencies. "Broadcasting urgent prayer requests and significant news is a part of our ministry as Gospel communicators," FRN explains.

K2AXO, Jack Buck, Mid-Atlantic ARMS member on Long Island, has been assisting Family Radio Network by patching EL2F to FRN for an interview with Aunt Clara, native Liberian of ELWA fame.

Do you have something of interest for "Missions Hot Line" through your radio skeds with missionaries? You may contact Family Radio Network by dialing 425-333-3500.

### BANQUET SPEAKER

ARMS will be privileged this year to have **WOCQY, Rev. George Metcalf** as the banquet speaker. The article in this issue of the Beam touches only briefly on how he came to be called into missionary radio communications work. This Spirit-filled man will warm your heart with the experiences that have enriched his life through missionary radio, and you will be challenged and encouraged to pursue more faithfully than ever this blessed opportunity we have as Christian hams to stand alongside our missionaries as a helper, an intercessor and ambassador with them for Christ.



Fred Zabel  
SIM

Rev. Metcalf  
WØCQY

Don Berggren  
KØOAV

WØCQY serves as executive director and secretary of the Missionary Radio Foundation, incorporated in 1959. Bequests and donations to this foundation have made possible the distribution of a quarter million dollars worth of radio equipment to various mission posts throughout the world. Missionary Radio Foundation is located on a beautiful 95 acre estate seven miles east of St. Paul on the old Indian Trail. Here Father Metcalf, known affectionately to the fraternity of hams as "George", is rector of the Oratory of St. Mary.

## "But to do Good and to Communicate—"

Hebrews 13.16

Great things often have small beginnings. *"It's only in retrospect that we can see the Lord's leading through ordinary insignificant incidents. These moments of insight reveal how the Spirit has given direction to our lives, a step at a time, even to the minutest detail of our daily routine, to accomplish something for His Glory."* These were some of the observations of the Rev. George Metcalf, WØCQY as he recounted his experience and early interest in radio during high school days in St. Paul, Minnesota.

### 40 Jelly Glasses

He received his first ticket in 1921 as 9BTI, and went on the air with a spark coil, a Galena crystal and later with a De Forest audiotron. He ran a 50 watt rig with raw A.C. and can testify to the power of 20 pairs of jelly glasses with zinc and aluminum electrodes in borax solution. These jelly glasses would hum and light up like a mercury vapor rectifier tube. Once when George touched this glowing transformer in the wrong place, it threw him 20 feet, slamming him against the wall. Because of this life-saving jolt, he is alive today to tell how the Lord got hold of this talented young man, and led him eventually into missionary radio work.

"This is the Way, walk ye in it."  
Isaiah 30:21

The Lord changed the course of George's life while he attended Harvard College of Business Administration, when He called him into the ministry. After his graduation from the Episcopal Theological School in Cambridge, during his first parish at Southbridge, Mass., George became licensed as 1FWV. He worked Europe on CW in those days with one 10 watt tube and a piece of wire for the antenna. During World War II he served as a chaplain with the Third Army.

### "Redeeming the Time"—

WØCQY was the call issued to Father Metcalf in 1947 at St. Paul, Minn. Disturbed that ham radio was becoming a time-consuming hobby, his interest in radio lagged. His deepest supreme desire was to make the best use of his time for the Lord. So he gave up his old love for radio saying, "Lord, I mustn't take up Your time this way."

### Emergency on the Yukon

In the Fall of 1956, while serving on the staff of a St. Paul church, George learned from a missionary speaker, who worked with Indians at Anvik, Alaska, of their need for dependable radio communications. The government had allotted the Mission outposts Coastal Service frequencies, which were usable only during nighttime hours. This sometimes meant a wait of as much as 48 hours until arrangements could be made to fly a hemorrhaging tuberculosis patient from the isolated outpost on the Yukon River to the Mission Hospital downriver 100 miles. Such delay inevitably caused the loss of the patient before the air ambulance could arrive. This weighed on George's heart—he felt amateur radio was the answer. Immediately he made arrangements to train two of the missionaries for amateur radio licenses, and within a year raised money for ham equipment to get them on the air.

"Come over into Macedonia, and help us." Acts 16:9

As a result of this demonstration of how amateur radio could help the missionary, the Holy Cross Mission inquired of WØCQY as to the possibilities of using amateur radio to facilitate their work at Bolahun, Liberia. This Mission Hospital in the Hinterland was isolated by 150 miles of impenetrable rain forest and an escarpment of rugged cliffs.

## GOOD TURNOUT AT BRISTOL BANQUET

Twenty members from the Mid-Atlantic Section attended the ARMS meeting May 11 at O'Boyles Restaurant in Bristol, Pa. The group enjoyed a very fine banquet and the good message presented by W2CCE, Bob Dickinson of Trans World Radio.

## Missionary Conference ARMS Demonstration

WØQCB, Francis, and WØHVH, Jim, set up a Galaxy V and the SBE-33 in the Fellowship Hall of their church in Cedar Rapids for the annual Missionary Conference. TI2RO, Bob Remington of DIA, home on furlough from Costa Rica, helped operate the rig to demonstrate how ARMS works. They used a 15/20 meter quad for good contacts with some of the missionaries the church supports, including Ron Youngs, Honduras; Frank Drown, Macama, Ecuador; Jim Hedlund and Herb Jacobson of Quito, Ecuador; also the Wycliffe Base in Peru. This was a big blessing to the conference and inspiration to both missionaries and laymen attending the conference.

## Houghton College Sked

WØCQY inquired on the air for information regarding existing Liberian radio schedules, and was directed to K2GQG, by someone who had overheard the Houghton College station working Liberia on one of their regular schedules with EL2F, located at ELWA's Radio Village near Monrovia. Skeds with Houghton College led to his first successful contact with EL2F on October 29, 1957. Through EL2F he learned of the newly formed Amateur Radio Missionary Service net. He worked closely with ARMS in establishing communication with Liberia. He also became associated with the Missionary Engineering Net.

## Radio Vital Link

His Northwest Airlines pilot friend invited George to go along to ferry a C-47 to Angola in May '58. George seized this opportunity to take along radio equipment to install at the Bolahun Mission. This trans-Atlantic flight was not without peril—at one time they were headed for the "drink", losing altitude rapidly, but discovered a connection on an improvised auxiliary fuel tank turned the wrong way in time to avoid disaster at sea. George regards certain aspects of this trip as foolhardy, but is thankful that he was able to get EL6A on the air. The dramatic situations which have developed upon a number of occasions on his regular skeds with EL6A is a story in itself, sometimes stranger than fiction. George insists that such drama is routine in his line of duty and is commonplace in the lives of missionaries and the ARMS radio operators who share in these experiences as they assist them with communications during all manner of emergencies. The verse that reflects his feeling about the part amateur radio now plays in his life is the ARMS motto: *"As we have therefore opportunity, let us do good unto all men, especially unto them who are of the household of faith."* Galatians 6:10



## PROCEDURE FOR CONTACTING WB4BLK

WB4BLK monitors 14.250 MHz on the 20 meter band from 1400 to 2200 GMT daily. Also, 21.400 MHz is monitored from 1900 to 2030 GMT.

Monday and Friday at k300 GMT the station skeds EL2F on 21.400 MHz.

The station is the net control station for the Intercontinental Traffic Net on 14.330 MHz Monday, Tuesday, Wednesday and Friday from 1400 to 1500 GMT.

It is suggested that the following procedure be used if contact is not made on 14.250 MHz: 1) Alter your frequency, giving calls for the station on frequencies ranging around the one you read as 14.250 MHz. 2) Try contacting the station on 21.400 MHz between the times listed above. 3) Attempt to contact a station in south Florida and ask him to call for us (our antennas are oriented in a southerly direction). 4) Look for the station at the times indicated above on secondary frequencies. 5) Leave word with the net control station of the Intercontinental Net which meets from 1100 to 1500 GMT and from 0000 to 0100 GMT on 14.330 MHz daily except Sunday.

## Rocky Mt. Section Meets

The active, busy and growing Rocky Mt. ARMS group met April 20 at the home of Don Helling, WA0NJJ in Deertrail, 50 miles east of Denver. The guest speaker, missionary in the Congo during the recent uprising, emphasized the ever present need there for communications.

## ARMS Directory

It is hoped that the new issue of the ARMS Directory will be ready in time for the annual meeting. A copy will be mailed to each member. Additional copies will be made available through your local Section, or may be sent upon request from either the national secretary or the treasurer.

## OFFICIAL NOTICE

Action will be taken at the 1968 annual business meeting to consider amendments to the following parts of the Constitution:

Article I—Section 4

Article III—Section 4

Article V—Section 3 & 4

Article VIII—Section 3 & 4.

## MISSIONARY STATIONS REPORT SATISFACTION WITH WB4BLK MED-AID SERVICES

CP8AU, Riberalta, Bolivia, which now has regular skeds with the MED-AID station at the Duke University Medical Center, sought information on tests for checking water purity. Concerned about the outbreak of an infectious disease, water supply tests were necessary. Arrangements were made through the Duke station for talking to a sanitation engineer at the School of Public Health at the University of North Carolina, in nearby Chapel Hill. Dr. Neva Wieseke at the Riberalta Jungle Base Clinic has used the services of WB4BLK for medical consultation. The ARMS members at Riberalta and their fellow missionaries, who depend on the radio like we at home depend on the telephone, appreciate these services made available to isolated doctors and missionaries by amateur radio.

EL2F, ELWA Radio Village station in Liberia, maintains regular skeds with WB4BLK. A RTTY message sent by EL2F to ARMS station K2AXO, tells how pleased they have been with the services rendered through WB4BLK, and recommend to other isolated missionary doctors and hospitals MED-AID assistance, made possible through the vision and dedication of the WB4BLK Club and the organizations cooperating with them to provide this unique service.



ARMS member, Dr. Ned Wallace, YN4WD, director of Hospital Gray Memorial in Puerto Cabezas, Nicaragua, who serves as vice-president of the MED-AID club, has been a frequent user of the services of the MED-AID station. In fact, it was his consultations with Duke people that furnished the impetus for the establishment of the station. Prior to this, Dr. Wallace had to rely on his regular schedules with individual Eastern ARMS stations to relay lab reports, arrange special medical consultations, etc. Often he was unable to keep these schedules because of emergencies. To be able to call in to the MED-AID station any time between 1400 and 2200 GMT daily has more conveniently facilitated his work.

## WELCOME TO ARMS

### Memorandum

To: Amateur Radio Missionary Service

From the Office of the President

Date April 12, 1968

A hearty welcome to the Annual Convention of the members of the ARMS network on our campus during the last week of June.

Houghton College for many years has been interested in amateur communication, particularly as it applies in the Lord's work. Perhaps we are one of few schools that can boast of a president and dean who have had amateur licenses.

Unfortunately the meeting falls during the General Conference of our denomination and many of the college officials will be away from the campus. However, I am sure you are in good hands in that Al Smith will be an excellent host and college representative.

May the Lord's richest blessing be yours as you meet together concerning mutual problems in communication.

In His service,

*Robert Luckey*  
Robert Luckey

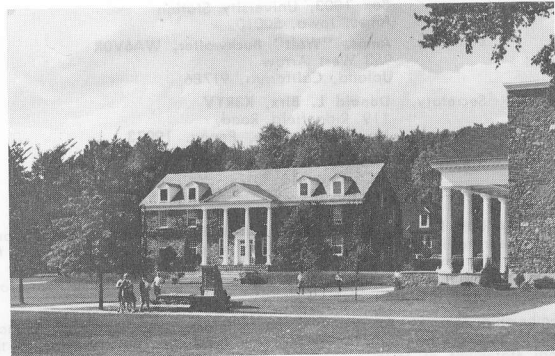
## Central Section Meets

The first meeting of the Central Section was held in Grand Rapids, Mich. on Jan. 27, 1968. Nominations were received for offices of chairman, Secy-Treas., and Communication Manager to be elected by ballots mailed to the members. W9KWJ, Harry showed slides and shared experiences of their Peruvian trip after a fellowship meal at the home of W8IHU, Dan.

## SEND YOUR QSL!

If you can't come, send your QSL and/or a snapshot to Al Smith, K2CAC, for display at the annual meeting.

Rus Sackers, W8DED, new ARMS member in the Central Section from Holland, Mich. has a unique ministry of reaching hams for Christ with Gospel QSLs. He offers free Gospel QSL samples to ARMS members.



## 1968 ANNUAL ARMS MEETING

June 28 and 29

## HOUGHTON COLLEGE CAMPUS

Friday, June 28—Board of Directors and Committees meet.  
—Friday Evening Fellowship

Saturday, June 29—9 a.m. ARMS Business Meeting Convenes.  
—Saturday Night Banquet  
Speaker: Rev. George Metcalf, WOCQY

# MISSIONARY SCHEDULES

# ARMS NETS

DLY	24 HRS.	OZ8B	WA4ZRS	21.100 RTTY
DLY	24 HRS.	OA8B	WA4ZRS	21.100 RTTY
DLY	1045Z	KP4CQW	K9WJU	14.290
DLY	1130Z	CP8AZ	K1GUR	14.160/14.277
DLY	24 HRS.	OA8B	WA4ZRS	21.100 RTTY
DLY	1130Z	CP8AZ	K1GUR	14.160/14.277
DLY	1130Z	YN4WD	W2RJQ	14.265
DLY	1145Z	KP4CQW	K9WJU	14.290
DLY	1400Z	CP8AZ	WA4ZRS	21.360
DLY	1400Z	HC7JJ	WA4ZRS	21.360
DLY	1630Z	OA3L	W4CWY	21.440
DLY	1800Z	HC1MX	WA4DHK	21.340
DLY	2230Z	OA3L	W4CWY	21.440
DLY	2200Z	KP4ATS	W3BPJ	29.100
DLY	2200Z	HC1MB	K3RYV	21.390
SUN	1115Z	3A2CQ	W2CCE	14.065 CW
SUN	1100Z	VK2AXS	VE3AX	14.155
SUN	1230Z	PZ1CF	W2CCE	21.320
SUN	1900Z	HC7FD	W8BBJ	21.400
SUN	2215Z	HC1WR	K0GAZ	21.415
MON	1115Z	3A2CQ	W2CCE	14.065 CW
MON	1730Z	VE8	WB6IFK	21.390
MON	2100Z	VK9GN	WA4ZRS	28.700
MON	2130Z	KL7DTJ	WA4ZRS	21.360
MON	2200Z	OA5C	W3BXW	21.415
MON	2300Z	KL7DTJ	W3BPJ	21.360
MON	2385Z	CE3IF	WA3EBG	21.370
TUE	1530Z	OA3L	W5MWY	21.440
TUE	1815Z	CP8AZ	WB6IFK	21.380
TUE	2200Z	EL8E	W3BPJ	21.360
TUE	2430Z	ZP5EE	K0GAZ	21.330
WED	0230Z	OA8V	W9BNI	14.290
WED	0300Z	KL7FKR	W5MWY	21.440
WED	1115Z	3A2CQ	W2CCE	14.065 CW
WED	1130Z	PJ5BE	W2CCE	21.390
WED	1200Z	HC1MX	W8BBJ	14.340
WED	1500Z	EL2F	K2AXO	21.185/21.385
WED	1600Z	EL2F	W0CQY	21.185/21.385
WED	2200Z	OA5C	W3BXW	21.415
WED	2000Z	OA8AT	W9KWJ	21.370
THU	1530Z	OA3L	W5MWY	21.440
THU	1600Z	OA5AH	WB6IFK	21.360
THU	1645Z	EL2F	K2CAC	21.295
THU	2100Z	VK9GN	WA4ZRS	28.700
THU	2130Z	KL7DTJ	WA4ZRS	21.360
FRI	1115Z	3A2CQ	W2CCE	14.065 CW
FRI	2200Z	OA5C	W3BXW	21.415
FRI	2230Z	OA8AO	K3HTN	21.400
FRI	2300Z	KL7DTJ	W3BPJ	21.360
FRI	2315Z	CE3IF	WA3EBG	21.370
SAT	1115Z	3A2CQ	W2CCE	14.065 CW
SAT	1300Z	HC7FD	W8BBJ	21.400

MON	0100Z	MID-ATLANTIC FELLOWSHIP	29.100
MON	1100Z	EASTERN SECTION	3.907
MON	1145Z	MIDWEST SECTION	3.907
TUE	1100Z	INTERNATIONAL RTTY	21.100
TUE	1530Z	TRANSCONTINENTAL	14.310
WED	1100Z	EASTERN SECTION	3.907
WED	1145Z	MIDWEST SECTION	3.907
THU	1100Z	INTERNATIONAL RTTY	21.100
THU	1500Z	WEST COAST SECTION	3.915
FRI	0030Z	CENTRAL SECTION (THURS NITE 7:30 PM CDT)	3.907
FRI	0100Z	FELLOWSHIP (THURS NITE 9 PM EDT)	3.907
FRI	1100Z	EASTERN SECTION	3.907
FRI	1145Z	MIDWEST SECTION	3.907
SAT	1330Z	MIDWEST SECTION	3.907
SAT	1400Z	ROCKY MT. SECTION	3.915
SAT	1530Z	TRANSCONTINENTAL	14.310
SAT	1800Z	WEST COAST SECTION	3.915
DLY	1800Z	HALO NET (WA4PXR NCS)	21.390



KL7FRZ, Gary Carlson, formerly W7WPR of Seattle, is stationed in Alaska. He enjoys fellowship with the GMU missionaries at their little church in Haines. Gary is lonesome for ARMS contacts on the air. You may write him for skeds at P. O. Box 185, Haines, Alaska 99827, or send a radiogram via the Sourdough Net.

Those who served on the nominating committee were: W2CCE, Bob Dickinson, chairman; W9BNI, Claude Beachy; W0QCB, Francis Finck; K0FMF, Richard Long; WB6IFK, John Whitaker. They have respectfully submitted the enclosed ballot for election of ARMS officers for the coming year.

## OFFICERS OF ARMS:

President,	Don Petersen, W0LSF Box 1003, University Station Ames, Iowa, 50010
Vice Pres.,	Amos. "Walt" Buckwalter, WA6VOR 953 West Arrow Upland, California, 91786
Secretary,	Donald L. Bix, K3RYV 119 Ridgefield Road, Newtown Square, Penna. 19073
Treasurer,	Frank S. Sanson, W3RVY P.O. Box 146 Bethany Beach, Delaware, 19930

The AMATEUR RADIO MISSIONARY SERVICE is a fellowship of born-again amateur radio operators, cooperating to provide communications for missionaries via amateur radio.

ARMS was founded March 2, 1957 and incorporated as a non-profit organization under the laws of New Jersey, May 20, 1965.

Membership is open to any licensed amateur radio operator or non-licensed person interested in the work of ARMS who can subscribe to the doctrinal statement of faith.

Membership dues are \$2 per year, entitling the member to receive the official publication, THE BEAM. Subscription to non-members is \$2/year.



**The ARMS BEAM**  
official publication of  
The Amateur Radio Missionary Service  
published quarterly

Editor: Mary Rittgers, K0ELX

PRESSTIME PARAGRAPHS

MIDWEST SECTION ANNUAL PICNIC WILL BE HELD THIS SUMMER IN CEDAR RAPIDS, IOWA. IT HAD BEEN ORIGINALLY SCHEDULED FOR THE LAST SATURDAY IN JULY BUT A CHANGE WAS NECESSARY BECAUSE OF CONFLICT WITH THE ANNUAL MEETING IN DENVER. THE NEW DATE IS NOW SATURDAY JUNE 28TH. DINNER WILL BE POT-LUCK. A FINE PROGRAM IS PLANNED INCLUDING A SIDE TRIP TO THE COLLINS RADIO COMPANY. BRING THE FAMILY AND ENJOY AN ARMS FIELD DAY.

\*\*\*\*\*

SUNRISE BIBLE STUDY GROUP TO RECEIVE RECOGNITION IN A STORY VERY SOON TO APPEAR IN THE WEEKLY PAPER POWER FOR LIVING ACCORDING TO REPORTS WE HAVE RECEIVED. THE SUNRISE BIBLE STUDY GROUP WAS ORGANIZED SEVERAL YEARS AGO BY FORMER ARMS PRESIDENT LLOYD ALFORD VEJAX. IT HAS BEEN A GREAT BLESSING TO THOSE WHO HAVE BEEN ABLE TO PARTICIPATE AS WELL AS A REAL CHRISTIAN TESTIMONY ON THE 75 METER BAND. SEE NET SCHEDULES FOR TIME AND LOOK FOR THIS ARTICLE IF YOUR CHURCH RECEIVES THIS PERIODICAL.

\*\*\*\*\*

ARMS LISTED IN NORTH AMERICAN PROTESTANT MINISTRIES OVERSEAS DIRECTORY WHICH GIVES UP-TO-DATE INFORMATION ON 400 MISSION AGENCIES. THIS DIRECTORY IS AVAILABLE FOR \$2.50 FROM MISSIONS ADVANCED RESEARCH AND COMMUNICATION CENTER (A DIVISION OF WORLD VISION INTERNATIONAL) MONROVIA, CALIFORNIA.

\*\*\*\*\*

DR. GLEN ESCHTRUTH, M.D. K8MZG/9Q5GF WRITES IN A RECENT LETTER FROM PIPER MEMORIAL HOSPITAL IN THE CONGO REPUBLIC TELLING OF THE MEDICAL WORK IN THIS AREA WHERE THERE IS NOT ANOTHER HOSPITAL IN AS MUCH AS 200 TO 450 MILES IN SOME DIRECTIONS. HE RELATES SOME OF THE DAILY EVENTS THAT GO TOGETHER TO MAKE GOD'S MESSAGE OF SALVATION AND HOPE A LIVING REALITY TO THE CONGOLESE PEOPLE. MEDICAL CONSULTATION BY THE HAM RADIO LINK HAS BEEN A 'LIFELINE.' (SEE THE BEAM FOR SUMMER '67).

\*\*\*\*\*

MARCO MAKING IMPACT ON MISSIONARY MEDICINE: MEDICAL AMATEUR RADIO COUNCIL, LTD, CHARTERED AS A CHARITABLE ORGANIZATION, IS MAKING AN IMPACT ON MISSIONARY MEDICINE AROUND THE WORLD, ACCORDING TO A RECENT A.M.A. INTERNATIONAL HEALTH BULLETIN.

MARCO PUBLISHES INFORMATION ON ANY TOPIC RELATING TO ELECTRONICS OR THE HEALING ARTS AND DISSEMINATES NEWS ABOUT THEM BY AMATEUR RADIO GIVING EMERGENCY CONSULTATION TO MISSIONS AND MISSIONARY PHYSICIANS THROUGHOUT THE WORLD.

MED-AID STATION WB4BIK AT DUKE UNIVERSITY, DURHAM, N.C. HAS PERFORMED AN OUTSTANDING SERVICE TO THOUSANDS THROUGH THIS MEDIUM.

\*\*\*\*\*

CORRECTION: IN THE ABOVE ITEM ON THE SUNRISE BIBLE STUDY GROUP, CREDIT IS ALSO DUE DON CRONMEYER W2DQL (FORMERLY K8HHK) WHO ALONG WITH LLOYD WAS ONE OF THE FOUNDERS. LOOK FOR THE MARCH 9TH ISSUE OF 'POWER.'



# MISSIONARY SCHEDULES

DLY	24 HRS	OA8B	WA4ZRS	21.100 RTTY
DLY	1130Z	CP8AU	K1GUR	14.160/14.277
DLY	1145Z	KP4DDV	K9WJU	14.290
DLY	1400Z	CP8AU	WA4ZRS	21.360
DLY	1400Z	HC7JJ	WA4ZRS	21.360
DLY	1630Z	OA3L	W4CWY	21.440
DLY	1800Z	HCLMX	WA4DHK	21.340
DLY	2200Z	HCLMB	K3RYV	21.390
DLY	2230Z	OA3L	W4CWY	21.390
DLY	2300Z	KP4ATS	W3BPJ	21.390
DLY	2400Z	OA8AU	WA3EBG	21.440
SUN	1145Z	3A2CQ	W2CCE	14.065 CW
SUN	1900Z	HC7FD	W8BBJ	21.400
SUN	2200Z	HCLRT	K0GAZ	21.415
MON	1145Z	3A2CQ	W2CCE	14.065 CW
MON	1730Z	OA5AH	WB6IFK	21.390
MON	2130Z	KL7DTJ	WA4ZRS	21.360
MON	2200Z	OA5C	W3BXW	21.415
MON	2300Z	KL7DTJ	W3BPJ	21.360
MON	2330Z	CE3IF	WA3ERG	21.370
TUE	1530Z	OA3L	W5MWY	21.440
TUE	2100Z	OA4TD	W3TEM	21.440
TUE	2200Z	EL8E	W3BPJ	21.360
TUE	2400Z	ZP5EE	K0GAZ	21.330
WED	0300Z	KL7FKR	W5MWY	21.440
WED	1145Z	3A2CQ	W2CCE	14.065 CW
WED	1200Z	HCLMX	W8BBJ	14.340
WED	1230Z	PJ5BE	W2CCE	21.390
WED	1500Z	EL2F	K2AXO	21.185/21.385
WED	2200Z	OA5C	W3BXW	21.415
THU	1530Z	OA3L	W5MWY	21.440
THU	1645Z	EL2F	K2CAC	21.295
THU	2100Z	VK9GN	WA4ZRS	28.700
THU	2130Z	KL7DTJ	WA4ZRS	21.360
THU	2400Z	ZP5EE	K0GAZ	21.330
FRI	1145Z	3A2CQ	W2CCE	14.065 CW
FRI	2200Z	OA5C	W3BXW	21.415
FRI	2230Z	OA8AO	K3HTN	21.400
FRI	2300Z	KL7DTJ	W3BPJ	21.360
FRI	2330Z	CE3IF	WA3EBG	21.370
SAT	1145Z	3A2CQ	W2CCE	14.065 CW
SAT	1300Z	HC7FD	W8BBJ	21.400
SAT	1330Z	HC7FD	W0QCB/W0EHV	21.396
SAT	1230Z	PJ5BE	W2CCE	21.390
SAT	1400Z	OA8AU	WA5BYV	14.180/14.240

# ARMS NETS

MON	0100Z	MID-ATLANTIC FELLOWSHIP	29.100
MON	1100Z	EASTERN SECTION	3.907
MON	1145Z	MIDWEST SECTION	3.907
TUE	1100Z	INTERNATIONAL RTTY	21.100
TUE	1530Z	TRANSCONTINENTAL	14.310
WED	1100Z	EASTERN SECTION	3.907
WED	1145Z	MIDWEST SECTION	3.907
THU	1100Z	INTERNATIONAL RTTY	21.100
THU	1500Z	WEST COAST SECTION	3.915
FRI	0030Z	CENTRAL SECTION (THURS NITE 7:30 PM CDT)	3.907
FRI	0100Z	FELLOWSHIP (THURS NITE 9 PM EDT)	3.907
FRI	1100Z	EASTERN SECTION	3.907
FRI	1145Z	MIDWEST SECTION	3.907
SAT	1330Z	MIDWEST SECTION	3.907
SAT	1400Z	ROCKY MT. SECTION	3.915
SAT	1530Z	TRANSCONTINENTAL	14.310
SAT	1800Z	WEST COAST SECTION	3.915
DLY	1800Z	HALO NET (WA4PXR NCS)	21.390

# OTHER NETS

TUE-THU-SAT	SUNRISE BIBLE	
1200Z	STUDY	3.912

The AMATEUR RADIO MISSIONARY SERVICE is a fellowship of born-again amateur radio operators, cooperating to provide communications for missionaries via amateur radio.

ARMS was founded March 2, 1957 and incorporated as a non-profit organization under the laws of New Jersey, May 20, 1965.

Membership is open to any licensed amateur radio operator or non-licensed person interested in the works of ARMS who can subscribe to the doctrinal statement of faith.

Membership dues are \$2 per year, entitling the member to receive the official publication, THE BEAM. Subscription to non-members is \$2/year.

## OFFICERS OF ARMS:

President,	Don Petersen, WOLSF Box 1003, University Station Ames, Iowa, 50010
Vice Pres.,	Amos. "Walt" Buckwalter, WA6VOR 953 West Arrow Upland, California, 91786
Secretary,	Donald L. Birx, K3RYV 119 Ridgefield Road, Newtown Square, Penna. 19073
Treasurer,	Frank S. Sanson, W3RVY P.O. Box 146 Bethany Beach, Delaware, 19930

## ARMS Motto:

"As we have therefore opportunity, let us do good unto all men, especially unto them who are of the household of faith." —Galatians 6:10



**The ARMS BEAM**  
official publication of  
The Amateur Radio Missionary Service  
published quarterly