

Amateur Radio Missionary Service

560 Main Street, Chatham New Jersey

THE BEAM



Spring 1971

ARMS ANNUAL MEETING JUNE 26

Eastern Mennonite College, located in Harrisonburg, Virginia has extended ARMS an invitation to hold their annual meeting on their lovely campus. EMC is situated in beautiful Shenandoah Valley.

A missionary program and time of fellowship is planned for Friday evening on June 25th, after the evening meal.

ACCOMMODATIONS AT EMC

\$10.00 per adult for lodging and meals, including banquet, from Friday evening meal thru Sunday morning breakfast.

Children four through twelve years old will be included at half price.

Children under four years, no charge.

\$6.00 per person for meals and one night of lodging. Children at half price.

For those coming in only during the day, the charge would be the regular charge for meals for visitors on the campus.

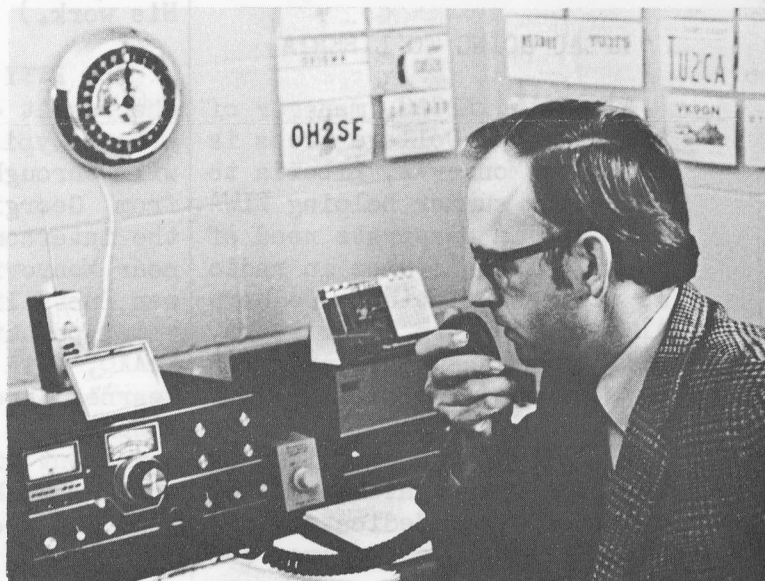
Bed linens will be provided, but not towels or wash cloths.

Send for your reservations as soon as possible, preferably not later than June 15, together with the registration fee of \$3.

Mail registration to:

Mr. Gerald R. Brunk, K4RBZ
Route 6, Box 61
Harrisonburg, Virginia 22801

K4RBZ, Gerry Brunk, HOST AT ARMS MEETING



The ARMS annual meeting will convene at 9 A.M. Saturday, June 26. Of special interest will be a report from the Advisor on Corporate Affairs, WØJH, appointed to the post last year. Your presence at the annual meeting is important.

The banquet will be on the evening of Saturday, June 26. An interesting program is planned for your enjoyment and inspiration. There will be a breakfast Sunday morning, and the worship service will be in charge of WA7MKH, Walt.

K4RBZ will meet upon notification any who come by train, bus or plane. Mobiles will be talked in on 3.907 mhz., and the station will likely be on the air from the convention on the Saturday Transcontinental net on 14.307.

(If you are unable to attend, please send your QSL or photo so that it can be posted at the meeting.)

WA8FDC TO SPEND SUMMER AT
HCJB, QUITO, ECUADOR

WA8FDC, Roger Rowe, new ARMS member from Holt, Michigan is going to Quito, Ecuador this summer to assist HCJB with some technical work. He hopes to operate while there and is anxious to contact ARMS members. Roger has a commercial ticket and has worked for the Christian FM stations, WVNN, and WVFN, Albion, Michigan.

K2CAC GOING TO LIBERIA

Al Smith, K2CAC, manager of the Houghton College Press is going to Monrovia, Liberia to spend the summer helping ELWA. ELWA is "in desperate need of technical assistance in radio as well as printing. To have Al help for even a few weeks, will be an answer to prayer," says Herschel Ries of ELWA.

In Feb. Al was surprised by the following statement, "Because of your dedicated life for Christ, your love and labor for missions, your service to the College Press and your church--your friends and the Foreign Missionary Fellowship of Houghton College and the Houghton Wesleyan Church are paying your expenses as a summer missionary to ELWA."

The ARMS BEAM



Editors:
WØJH, George Metcalf
KØELX, Mary Rittgers

The ARMS BEAM is the official quarterly publication of the Amateur Radio Missionary Service, Inc. 560 Main St. Chatham, New Jersey 07928.

Address editorial matters to:
WØJH, 795 Indian Trail South,
Stillwater, Minn. 55082

RADIOTELETYPE TO LINK

NATIVE INSTITUTE OF CANADA

Gene Parkins expresses thanks from Arctic Missions for help from ARMS members in getting the teletype equipment. (Procurement of the equipment is a very interesting story in itself, illustrating how the Lord has once again used ARMS participation for His glory and the furtherance of His work.)

The RTTY equipment made available for Arctic Mission is the result of a series of coincidental events. Is not this often typical of the Lord's provision as He works out His will through our lives? In 1968 a retired telephone man from Georgia donated his time and knowledge to updating the intercommunications system at the ELWA Radio Village near Monrovia, Liberia. At this time EI2F at Radio Village was installing and putting into reliable operation a radio teletype autostart channel on 15 meters between EI2F and K2AXO, with W2RJQ, W8IHU, and WØJH participating. It was learned through contact with this dedicated Christian telephone man that his company was replacing its teletype equipment with more modern gear, and that eventually the surplus machines might be available to a non-profit corporation such as ARMS for missionary related use.

Meanwhile, the Transcontinental 20 meter ARMS net was expanded to six days a week, and representatives of Arctic Missions, Inc., discovered the net and began checking in, getting acquainted with ARMS and the scope of its work. Teletype was discussed on the net from time to time. Arctic Missions felt a teletype link would be an efficient mode of communications in their situation. A need for RTTY equipment was mentioned. Trans World Radio could also use some machines and had their Florida agent receive, crate, and ship all of the equipment when it was released. WØJH, director of Missionary Radio Foundation, coordinated the financial and shipping details for the machines to Arctic Missions. All this transpired over a period of 24 months.

Do you ever wonder if the net is just a waste of time? Sometimes it may seem that way. But what if there were no net? What a privilege, as humble servants of the Lord to be faithful in His joyful service; then to see Him use ARMS fellowship for the furtherance of His Kingdom!

"And let us not be weary in well doing: for in due season we shall reap, if we faint not." Galatians 6:9



WITH ARCTIC MISSIONS HOME OFFICE

ARCTIC MISSIONS INC.

Arctic Missions is a non-sectarian, evangelical faith mission with over 90 missionaries, many of whom serve in remote villages of Alaska or British Columbia. Others work with students at Arctic Training Center, a school for native Alaskans, providing high school and Bible Institute programs and is located near Palmer, Alaska. A new school, the Native Institute of Canada, with the same goals is now under construction near Quesnel, British Columbia, where ARMS member, Gene Parkins, KL7FOZ/VE7 is located. He often checks in on the 20 meter net. The Native Institute of Canada is transforming an old 160 acre ranch into a ranch-style Christian Native Training Center. Over fifty persons spent their vacations helping. "This is the Lord's doing; it is marvellous in our eyes." Psalm 118:23

The Alaskan villages are reached primarily by airplane. In some areas travel may be by snowmobile in winter and by boat in summer. In British Columbia some areas are accessible only by horseback. With 17 mission stations and about 36 village missionaries scattered in isolated areas, evangelizing primarily Indian people, Eskimos, and Aleuts, the radio is a necessity.

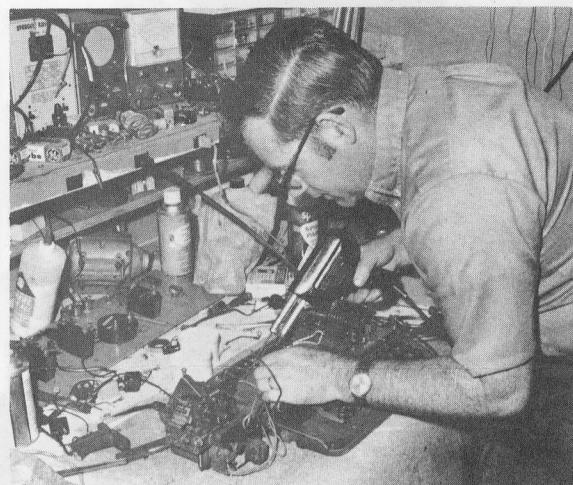
This summer radioteletype communications will link the Arctic Missions home office near Portland, Oregon with the field offices in Alaska and Canada. Plans are to use RTTY equipment in the following places:

1. Arctic Mission, Inc. via W7DYS, Portland, Oregon.
2. Native Institute of Canada, KL7FOZ/VE7, Quesnel, B.C.
3. Arctic Training Center, KL7FKR, Palmer, Alaska
4. Field Office in Anchorage, Alaska

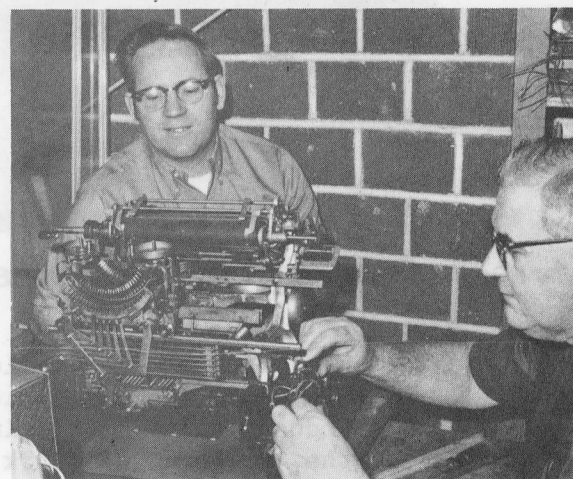
The operators listed below are located on the field:

KL7COX	Russ Arnold	Nenana, Alaska
KL7FKR	Gale VanDiest	Arctic Training Center
		Star Rt. C, Box 61
		Palmer, Alaska 99645
KL7FNB	Bob Moffat	Fairbanks, Alaska
KL7FOZ/VE7	Gene Parkins	Native Institute of Canada
KL7GLH	Doris Hagedorn	Nondalton
KL7GLM	Flo Hicks	Nondalton
KL7GIR	Dave Penz	Stoney River

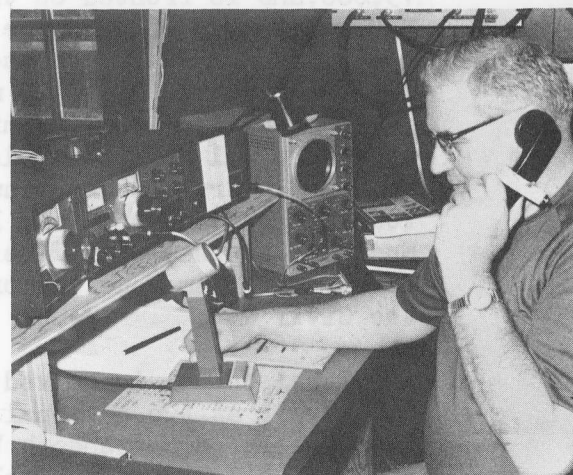
"And the things that thou hast heard of me among many witnesses, the same commit thou to faithful men, who shall be able to teach others also." -II Timothy 2:2



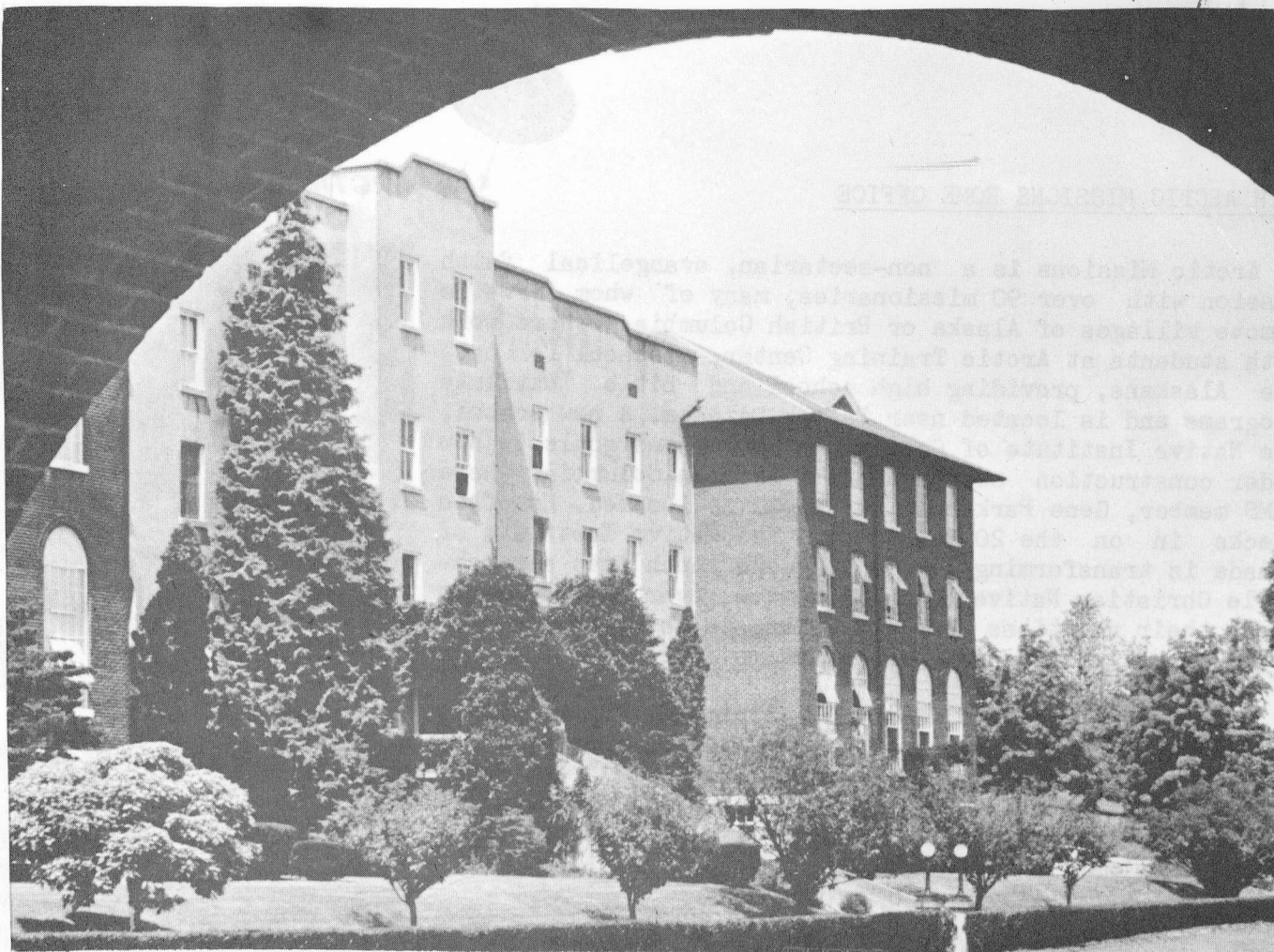
KL7FNB, Bob Moffat



KL7FNB & W7DYS



W7DYS, Bill Rogers



Eastern Mennonite College

Eastern Mennonite College is located in the heart of the scenic and historic Shenandoah Valley of Virginia. Situated in the Village of Park View one mile northwest of Harrisonburg, a city of 15,000, EMC is fronted on the east by the Mawsanutten and Blue Ridge mountain ranges and on the west by the Alleghenies. The college is only 120 miles from the nation's capital and 115 miles from Richmond, capital of the old Confederacy. Within a drive of 45 minutes are such tourist attractions as Luray Caverns, Endless Caverns, the Blue Ridge Skyline Drive, and numerous historic spots from the Civil War.

Harrisonburg is served by Interstate 81 as well as two national highways, U.S. 33 and 11. The Shenandoah Valley Airport about 15 miles from the college, provides regular air service. The Chesapeake and Ohio Railway and Greyhound bus line also serve the Shenandoah Valley.

Ladies, a very special program has been arranged for you! Ella Mae Miller, whose broadcast "Heart to Heart" you may have heard on your local Christian FM radio station, will be the speaker.

Please send for your reservations as soon as possible, not later than June 15 together with the registration fee of \$3. Reservations will be acknowledged with additional information on travel in the area and directions for reaching the EMC campus.

In case registration is made, and attendance is not possible, the fee will be refunded.

Mail registration to:

Mr. Gerald R. Brunk, K4RBZ
Route 6, Box 61
Harrisonburg, Virginia 22801