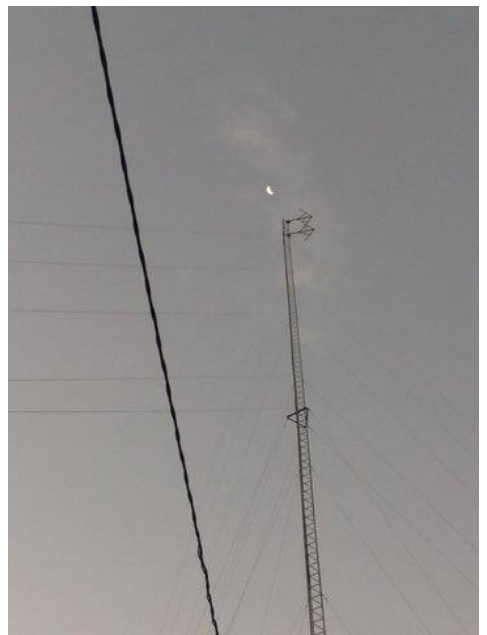


Ray Rising, K4LWJ's work in Peru!

These are pictures of my ham station, building a recording studio in Colombia. (There have been 4) in 2 countries. 2 FM stations in Peru, one was at 13,000 ft.! I had a hard time just trying to think at that altitude. There was another FM station I helped with in Colombia. They provided me a horse to ride. All went well until the saddle strap broke. The horse just looked back at me. I have lots of stories and pictures. The Lord always has some risk and adventure. Thank for the opportunity to share. I do have photos of the horse looking back at me, HI. Don, WA4PXR used to say LWJ means "Living with Jesus."

God Bless, 73 & 99 Ray K4LWJ/HK3SR





The following is the studio for the Short Wave station on the edge of the Amazon basin in northern Peru. They transmit programs in 12 languages every week. We trust the Lord for a backup transmitter. When the transmitter goes down it may be off the air several weeks before the problem can be found and parts sent. In the meantime the listeners lose interest. 73, 99 Ray K4LWJ



From Ray Rising K4LWJ 20 Jan 2021

These are equipment protector circuits for Ethnic Radio Station in Bolivia. Normal line voltage is 220-230 V. It will shut off equipment if over 250 v or under 180v.

