

[A Beginner-Friendly Guide for Linux / Start Learning Linux Quickly...](#)

DOSBox – Runs Old MS-DOS Games/Programs in Linux

[Narad Shrestha](#)

Last Updated: June 15, 2020

[Games](#)[9 Comments](#)

Ever wanted to play old **DOS games** or use old compilers like **Turbo C** or **MASM** to run assembly language code? If you have and were wondering how then **DOSBox** is the way to go.

What is DOSBox?

DOSBox is open-source software that emulates a computer running **MS-DOS**. It uses the **Simple DirectMedia Layer (SDL)** which makes it very easy to port to different platforms. As a result, DOSBox is available for a wide range of Operating Systems like **Linux**, **Windows**, **Mac**, **BeOS**, etc.

Installing DOSBox in Linux

If you are on **Ubuntu** or **Linux Mint**, you can install it directly from the **Software Center**. For other **Debian** based systems in general, you can use [sudo apt-get](#) to install it. The command for it is as follows.

```
$ sudo apt-get install dosbox
```

For other **Linux** flavors like **RHEL**, **CentOS**, and **Fedora**, you can compile and install it from the source as follows. Download the latest source file using the following [wget command](#).

```
# wget https://nchc.dl.sourceforge.net/project/dosbox/dosbox-0.74.tar.gz
```

Navigate to the directory in which the file was downloaded and run the following commands to install it.

```
# tar xzf dosbox-0.74-3.tar.gz
# cd dosbox-0.74-3/
# ./configure
# make
# make install
```

How to Use DOSBox

DOSBox can be run from a terminal by executing the following command, it will open up the terminal window, with a `Z:\` prompt.

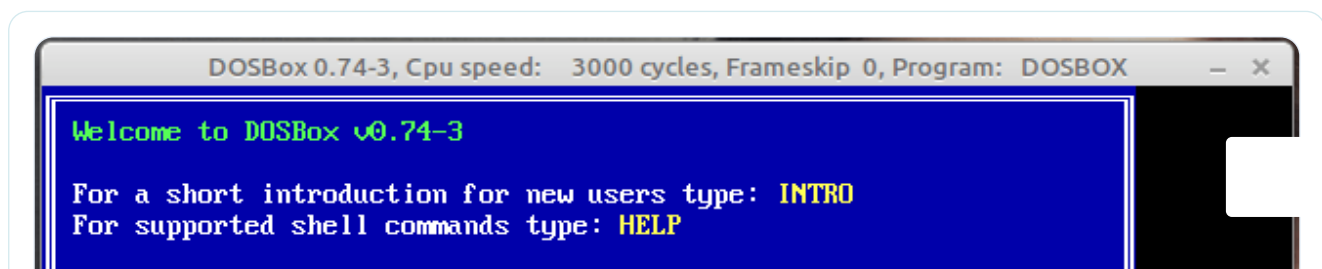
```
$ dosbox
```

Once you start **DOSBox**, you'll have to first mount the part of your system wants to access inside **DOSBox**.

```
mount <label> <path-to-mount>
```

To mount your whole **Home** directory as **C**, you can run the following command.

```
mount C ~
```



```
To adjust the emulated CPU speed, use ctrl-F11 and ctrl-F12.  
To activate the keymapper ctrl-F1.  
For more information read the README file in the DOSBox directory.
```

```
HAVE FUN!  
The DOSBox Team http://www.dosbox.com
```

```
Z:\>SET BLASTER=A220 I7 D1 H5 T6  
  
Z:\>mount C ~  
Drive C is mounted as local directory /home/tecmint/  
  
Z:\>_
```

Dosbox Running in Linux Mint

Then type in `C:` If you have to mount the same directory and [cd into the same location](#) every time, then you can automate the whole process with the help of the **DOSBox** configuration file.

This file is located in the `~/dosbox` directory. The name of the file will be the **dosbox-[version].conf** where version is the version number of DOSBox which you installed. So if you have installed version **0.74**, you'll run the following command:

```
$ nano ~/.dosbox/dosbox-0.74-3.conf
```

So, if you want your **DOSBox** to automount the home directory and go into the `~/TC` folder every time **DOSBox** starts, you can add the **following** lines at the end of the configuration file.

```
mount c ~  
c:  
cd TC
```

There are many more options available in the configuration file. For example, if you want DOSBox to always start in full-screen mode you can edit and change the value of a fullscreen parameter from **false** to **true**.

Many other options and description of them is given in the configuration file itself. Also, if you want to add comments anywhere in the configuration file, you can do so by using the # character at the start of that particular line.

Installing Few Games and Programmes

If you are a student of Computer Science in India then you must have used this at some point in time in your School or College. Although it is a pretty outdated compiler most Colleges still use it because of their inability to keep up with modern compilers.

1. Turbo C++

Download the latest **TC++** from the below link and extract its contents in your home directory.

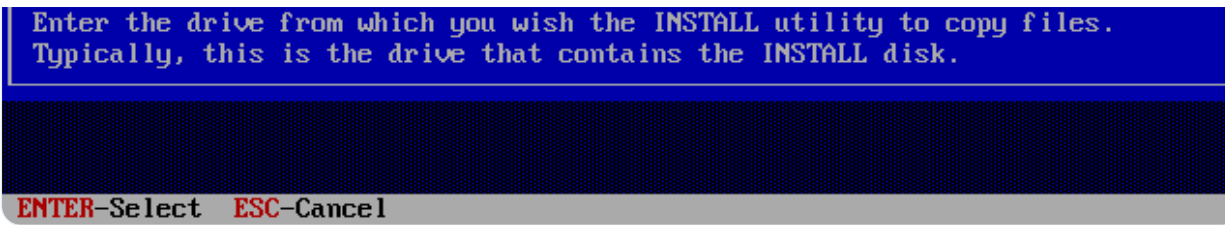
1. <http://turbo-c.soft32.com/>

Now start **DOSBox** and run the following commands.

```
mount c ~
c:
cd tc3
install
```

Change the source drive to **C** in the installation menu.



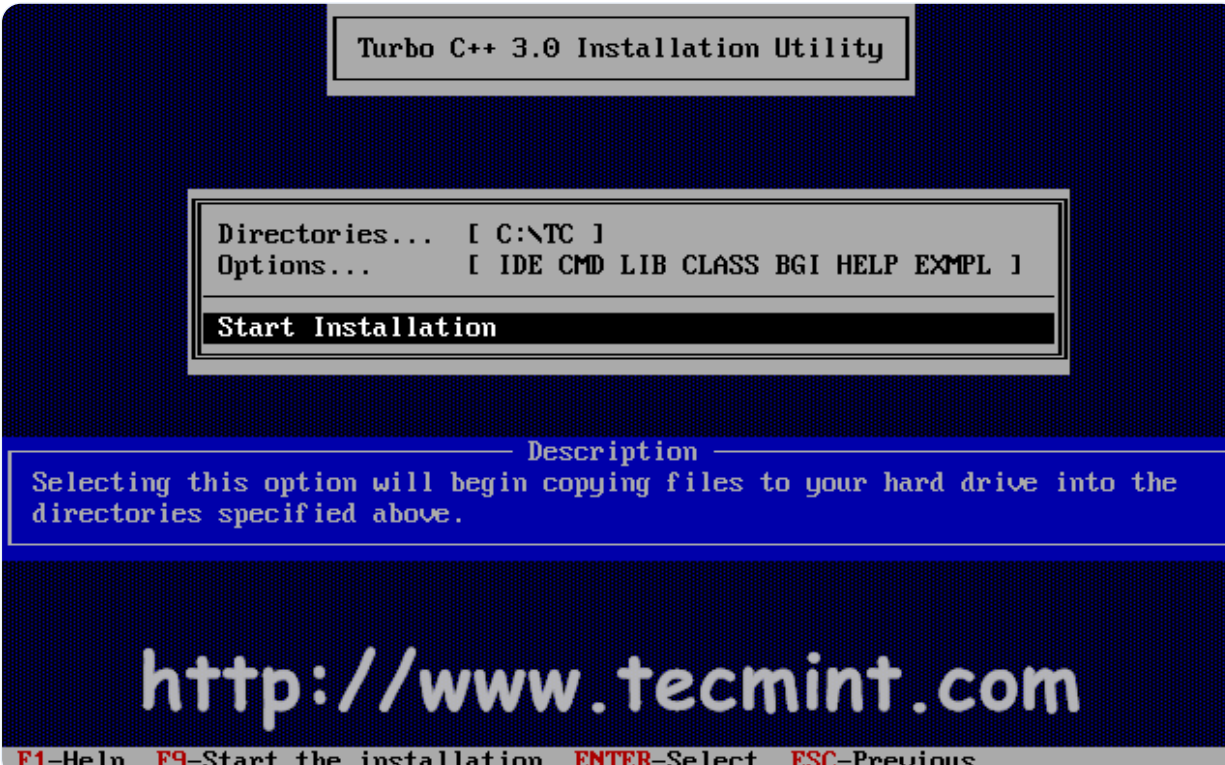


Enter the drive from which you wish the INSTALL utility to copy files.
Typically, this is the drive that contains the INSTALL disk.

ENTER-Select **ESC**-Cancel

Turbo C++

Keep the directory for installation as the default one and start the installation procedure.



Turbo C++ 3.0 Installation Utility

Directories... [C:\TC]
Options... [IDE CMD LIB CLASS BGI HELP EXMPL]

Start Installation

Description

Selecting this option will begin copying files to your hard drive into the directories specified above.

<http://www.tecmint.com>

F1-Help **F9**-Start the installation **ENTER**-Select **ESC**-Previous

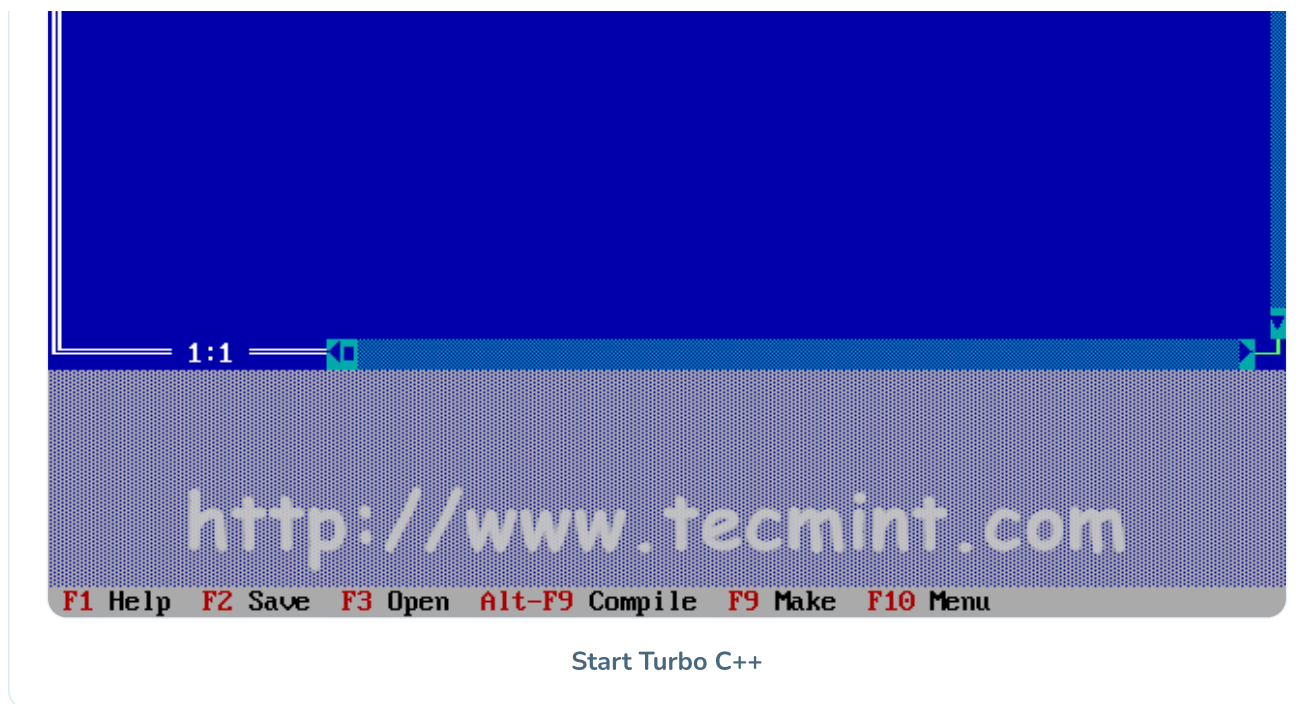
Install Turbo C++

After this, **TC++** would have been installed in the location **C:/TC**. You can run it using the following commands.

```
cd /TC
cd bin
tc
```



File Edit Search Run Compile Debug Project Options Window Help
NONAME00.CPP



2. Wolfenstein 3D

It was one of the most popular first-person shooter games in the '90s when it was released and is even today widely popular in the **DOS** games world. So if you want to have some vintage video game action, the steps to install it are given below.

Download the zip file from the below link and extract its contents to your home directory.

1. <http://www.dosgamesarchive.com/download/wolfenstein-3d/>

Now start **DOSBox** and run the following commands.

```
mount c ~  
c:  
cd wolf3d  
install
```

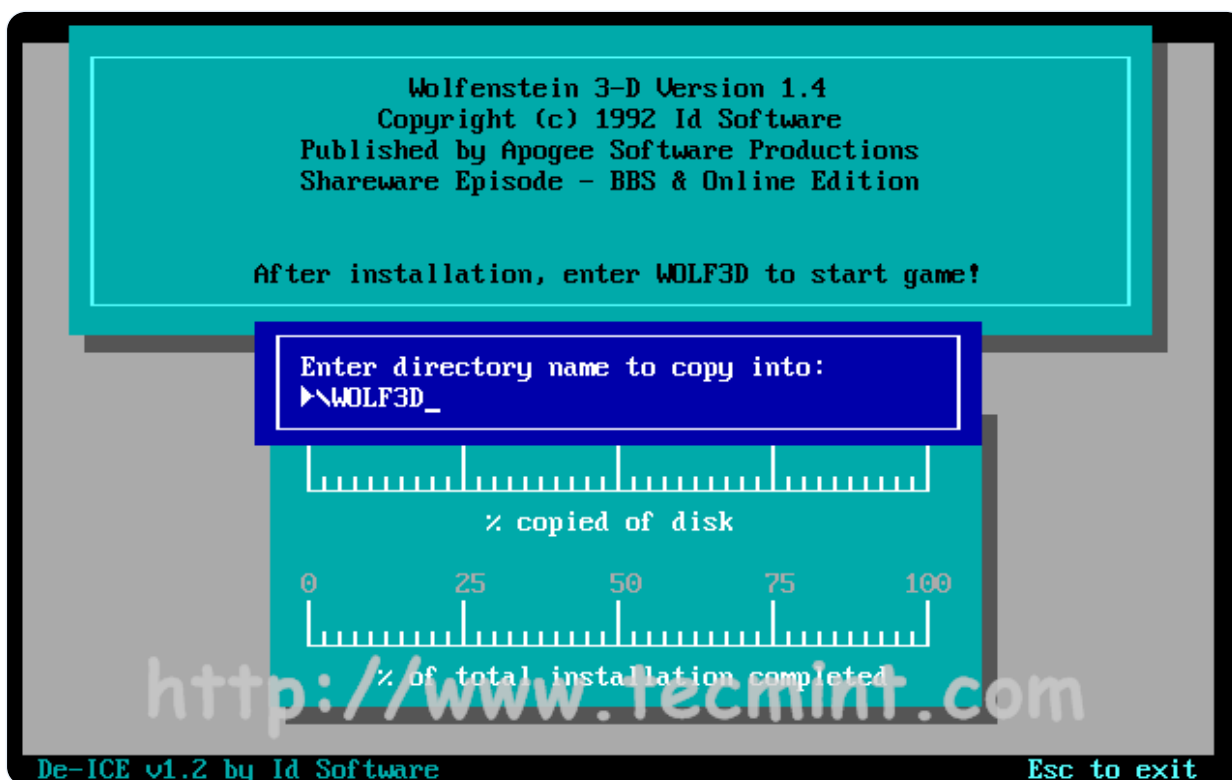
Select **C** drive as the installation drive as shown in the screen-shot below.





Wolfenstein 3D

Select the default directory for installation and press **enter**.



Install Wolfenstein 3D

After this, **Wolf3d** would have been installed in the location **C:/Wolf3d**. Once inside the **C:/Wolf3d** directory, you can enter "**wolf3d**" to run the game.





Start Wolfenstein 3D

3. MASM(Microsoft Macro Assembler)

If you want to run assembly language code then you need an assembler like **MASM** or **TASM (Turbo Assembler)**.

Download the rar file from the below link and extract its contents to your home directory.

1. <http://sourceforge.net/projects/masm611/>

Now start **DOSBox** and run the following commands.

```
mount c ~  
c:  
cd masm611/disk1  
setup
```

Let all the files be installed to their default locations and select the Operating System in which you want your programs to run.

Microsoft MASM 6.11 Setup System Configuration

The Macro Assembler now runs under Microsoft Windows NT and MS-DOS/Microsoft Windows.

Note: Files installed on the Microsoft Windows NT File System (NTFS) will only run on Microsoft Windows NT. Files installed on the MS-DOS (FAT) File System will run on MS-DOS, Microsoft Windows, or Microsoft Windows NT.

Choose the operating system you will use for running the Microsoft Macro Assembler.



Once the setup is finished, you can run **asm** files by running the following commands from the **C:/MASM611/BIN** directory.

```
masm <filename>.asm  
link <filename>.obj  
<filename>
```

4. Prince of Persia

This was the first game that I played on a computer! It was very popular while I was growing up in the early **2000s** in India. So if you too have fond memories like me of playing this game as a kid and would like to revive them, here are the instructions to install it in **DOSBox**.

Actually, you don't need to install it, you just need to download the zip file extract it somewhere and you can play the game in DOSBox directly by entering "**prince**" from that location. Here are the steps for it.

Download the zip file from the below link and extract its contents to your home directory.

1. <http://www.bestoldgames.net/eng/old-games/prince-of-persia.php>

Now start **DOSBox** and run the following commands.

```
mount c ~  
c:  
cd prince
```

prince



Prince of Persia Game

This was my very first article on **Tecmint**, so please feel free to comment on how you thought the article was and any suggestions if you have them for me. Also, you can post your doubts as comments if you run into some problem during the installation of any **game/program** in **DOSBox**.

🔖 [linux dos games](#)

If you read this far, tweet to the author to show them you care.

[Tweet a thanks](#)

PREVIOUS ARTICLE:

[How to Sync Two Apache Web Servers/Websites Using Rsync](#)

NEXT ARTICLE:

[Pear OS 8 Released – Review and Installation Guide with Screenshots](#)



Narad Shrestha

He has over 10 years of rich IT experience which includes various Linux Distros, FOSS and Networking. Narad always believes sharing IT knowledge with others and adopts new technology with ease.

*Each tutorial at **TecMint** is created by a team of experienced Linux system administrators so that it meets our high-quality standards.*

Join the [TecMint Weekly Newsletter](#) (More Than **156,129** Linux Enthusiasts Have Subscribed)

Was this article helpful? Please [add a comment](#) or [buy me a coffee](#) to show your appreciation.

Related Posts



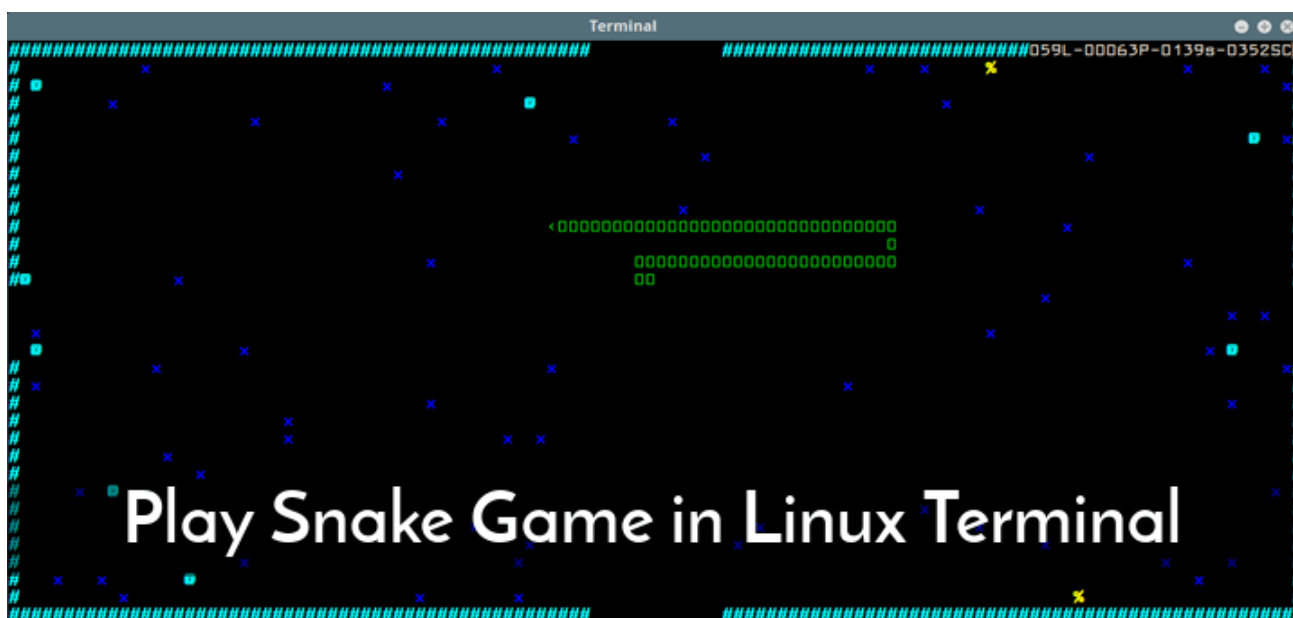
[15 Best Linux Games You Should Be Playing in 2023](#)



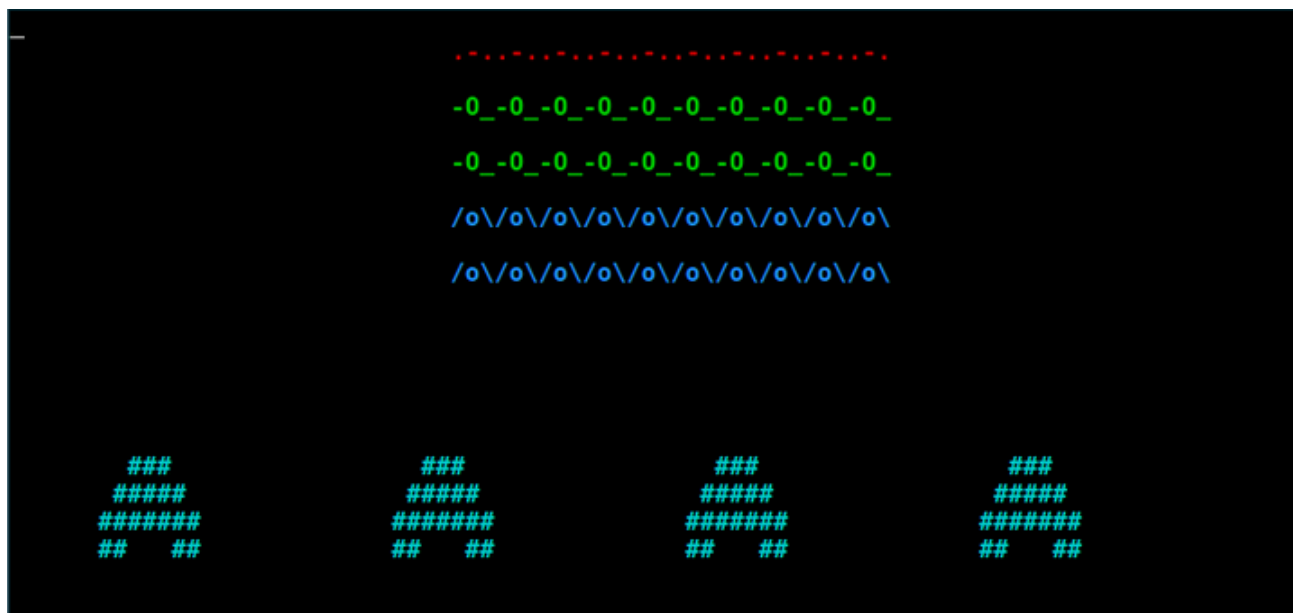
[10 Best Linux Gaming Distributions That You Should Give a Try](#)



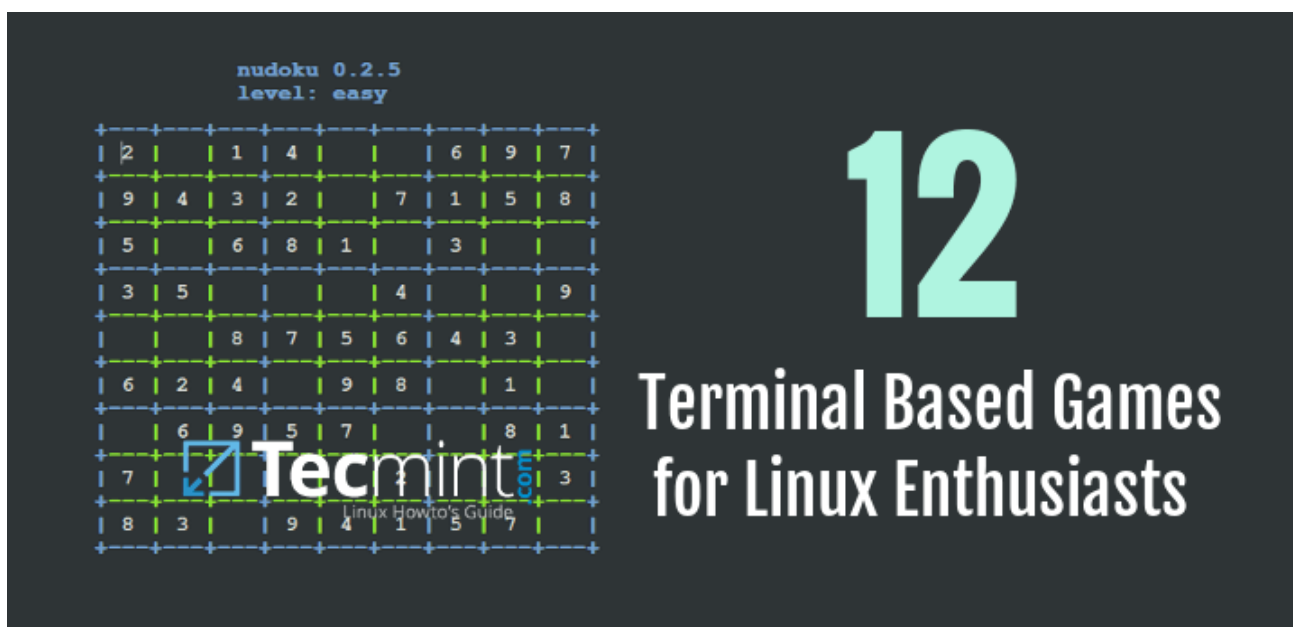
[PacVim – A Game That Teaches You Vim Commands](#)



[Linux Fun – Play Old Classic Snake Game in Linux Terminal](#)



Play Space Invaders – An Old School Arcade Game on Linux Terminal



12 Amazing Terminal Based Games for Linux Enthusiasts

9 thoughts on “DOSBox – Runs Old MS-DOS Games/Programs in Linux”

Noah

[June 14, 2020 at 6:39 pm](#)

This is coming from a user with Linux beta on a Chromebook that is trying to install a game and run it off of DOSBox from gog.com.

When I run the “`sudo apt-get install dosbox`” it says:

```
dosbox is already the newest version (0.74-2-3+deb10u1).
0 upgraded, 0 newly installed, 0 to remove and 22 not
upgraded.
```

and I can't find the file to unzip and install it.

any pointers?

[Reply](#)

prem

[May 14, 2016 at 1:00 pm](#)

the commands are not working for my mint os dosbox

[Reply](#)

Admin



Ravi Saive

[May 14, 2016 at 1:57 pm](#)

@Prem,

Which commands? can you mention it and what error you getting?

[Reply](#)

anitha

[July 20, 2014 at 2:14 pm](#)

Thanks a lot.....i was searching for a way to work with MASM on centos. I have to try it. glad to know that i can do it.....Thanks again...

[Reply](#)

makhauser

[November 14, 2013 at 9:36 am](#)

Yeah, one of my favourite apps. I use it everyday, especially – to play DooM II.
Thanks for some commands, Ctrl+D ;)

[Reply](#)



kaaposc

[November 12, 2013 at 8:22 pm](#)

Great article just because wolf3d and prince of persia were mentioned. And please,

CHANGE THE FONT on screenshots!

[Reply](#)



Saravanan SJ

[November 13, 2013 at 9:43 pm](#)

Thank you! :D

Which screenshots exactly? Are you talking about the font of watermark?

[Reply](#)



Mayuri

[November 12, 2013 at 5:31 pm](#)

Thanks mate. Helped me install DOS for masm compilation :)

[Reply](#)



Saravanan SJ

[November 12, 2013 at 6:06 pm](#)

Glad that it was of help. :)

[Reply](#)

Got something to say? Join the discussion.

important to note that we moderate all comments in accordance with our [comment](#)

[A Beginners Guide To Learn Linux for Free \[with Examples\]](#)

Linux Commands and Tools

[vlock – A Smart Way to Lock User Virtual Console or Terminal in Linux](#)

[How to Download Files to Specific Directory Using Wget](#)

[60 Commands of Linux : A Guide from Newbies to System Administrator](#)

[fkill – Interactively Kill Processes in Linux](#)

[How to Use Udev for Device Detection and Management in Linux](#)

[How to Find Out File Types in Linux](#)

Email *

Save my name, email, and website in this browser for the next time I comment.

[Linux Server Monitoring Tools](#)

Notify me of followup comments via e-mail. You can also [subscribe](#) without commenting.

[Install OpenWIS Network Monitoring Tool in CentOS/RHEL](#)

[iPerf3 – Test Network Speed/Throughput in Linux](#)

[Install Cacti \(Network Monitoring\) on RHEL/CentOS 8/7 and Fedora 30](#)

[TCPflow – Analyze and Debug Network Traffic in Linux](#)

[Htop – An Interactive Process Viewer for Linux](#)

Learn Linux Tricks & Tips

[Learn Why 'less' is Faster Than 'more' Command for Effective File Navigation](#)

[5 Ways to Keep Remote SSH Sessions and Processes Running After Disconnection](#)

[Useful Commands to Create Commandline Chat Server and Remove Unwanted Packages in Linux](#)

[How to Change Default Apache 'DocumentRoot' Directory in Linux](#)

[How to Find Recent or Today's Modified Files in Linux](#)

[Tips to Create ISO from CD, Watch User Activity and Check Memory Usages of Browser](#)

Best Linux Tools

[Best Skype Alternatives for Linux Desktop](#)

[Top 4 Google Docs Alternatives for Linux in 2023](#)

[10 Tools to Take or Capture Desktop Screenshots in Linux](#)

[Best PDF Editors to Edit PDF Documents in Linux](#)

[11 Best IP Address Management Tools for Linux Network](#)

[The 27 Best IDEs and Code Editors for Linux](#)

Tecmint: Linux Howtos, Tutorials & Guides © 2023. All Rights Reserved.

The material in this site cannot be republished either online or offline, without our permission.

Hosting Sponsored by : [Linode Cloud Hosting](#)