

INSTALLATION GUIDE

Mobile Signal Repeater

GSM Amplifier Repeater Anytone AT600



GSM | 900MHz

Coverage: 300 m²

Preface

This user's manual describes the installation and maintenance of wide band consumer boosters. Please do read user manual carefully before installing and maintaining repeaters. The information in this manual is subject to change without prior notice.

1. Safety Warnings

Users must follow the principles below□



Repeater should follow system requirements; assure good grounding and lightning protection.



The power supply voltage of repeater should meet security requirements; any operation shall be carried out only after turning off power in advance. Only the professional is authorized for the operation.



Do not dismantle machine, maintain or replace its components by yourself, because this way the equipment may be damaged and you may even get an electric shock.



Do not open the repeater, touch the module of the repeater, or open the cover of the module to touch electronic component. The components will be damaged due to electrostatic.



Please keep away from heating equipment, because the repeater dissipates heat during working. And do not cover a booster with anything that influences heat dissipation.

2. Introduction and Reasons for Weak Cellular Signals

Cell Phone Signal Booster is a perfect solution for providing improvement of cellular signal reception inside a house, office, restaurant, VIP Room, apartment, building or shopping mall.

Generally cell phones cannot pick up or maintain a strong cellular signal due to one of the two following reasons:

1. **Location of the Nearest Base Station** – Base stations are used to provide broad coverage. However there are many areas in which signal strength gets reduced due to topographic peculiarities or local Governmental restrictions regarding the height or location of base stations. Rural areas generally have fewer base stations than urban regions.
2. **Natural and Man-Made Obstructions** – Signal strength can also be negatively affected by trees, hills, buildings, weather and other obstructions. You may be relatively close to a base station but still unable to make a call. This often occurs inside houses, offices and other buildings with stucco, concrete or metal walls that may block the signal.

The Signal Booster works with two antennas. An Indoor antenna communicates with your cell phone and an Outdoor antenna communicates with the base station (BS). The Outdoor antenna receives a signal from the BS and sends it through the cable to the Signal Booster, where it gets amplified and re-transmitted by the Indoor antenna throughout a building. When the Indoor antenna picks up a signal from your cellular device, the Signal Booster amplifies that signal and transmits it through the cable to the Outdoor antenna and back to the BS.

(Note: The Signal Booster will only operate if there is an adequate signal to amplify.)

3. Model Description

Anytone AT600 repeater is used for improving GSM signals within coverage zone of up to **300 m² (3300 ft²)**. The repeater is effective for houses, parking areas, offices, stores, restaurants and other middle-sized locations. The working frequency of the device is **900 MHz** which makes it suitable for most providers operating in **European and other countries all over the world**.

AnyTone AT600 stabilizes mobile phone communication and provides stable access to both GPRS and EDGE networks.

AnyTone AT600 corresponds to the latest technical standards which is proved by the international **CE and RoHS certifications**.

Order AT600 GSM amplifier repeater and there won't be any dropped and missed calls in your life!

The device is delivered in complete package suitable for installation as apart from a repeater it includes antennas, cables and mounting facilities. The installation process is quick and don't take more than **15-20 minutes**. You also won't need additional help from technical specialists to fix the system as it's really simple.

The cellular repeater has small dimensions which makes it **unnoticeable for any interior**.

The [GSM repeater](#) is absolutely **safe for its users** and even decreases the amount of radiation emitted from the mobile phone in coverage shortage.

If you'd like to have guaranteed improvement of cellular connections AnyTone gsm amplifier repeater AT600 is the best way to do it!

[Our Professional Team](#) is always ready to answer all your questions.

Two videos below will help to understand the principle of a cellular repeater work and what AT600 package includes.

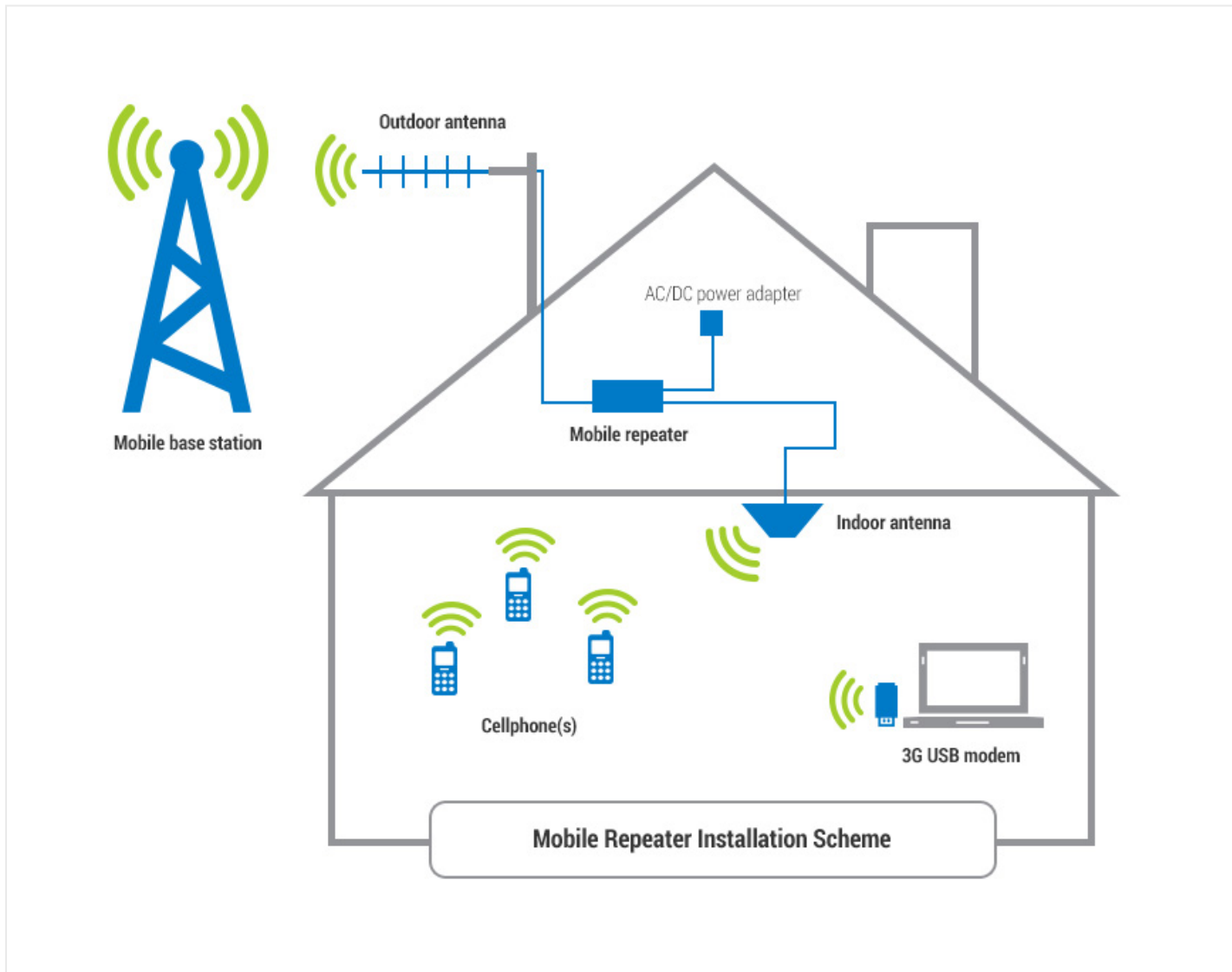
4. Specification

Indoor coverage:	300 m ²
Up-link freq:	890-915 MHz
Down-link freq:	935-960 MHz
Up-link Gain:	50 dB
Down-link Gain:	60 dB
Power supply:	AC 10V / 30mW (AC 220V/110V)
Working t°C:	-25 - +55
Humidity:	5-95%
Size (mm):	248x146x35
Booster Weight:	1.5 kg
Package Weight:	6.5 kg
dBm:	15

5. Repeater system overview

The picture below shows how simple and fast booster installation is and how effectively it works.

A Yaggi or panel antenna (it depends on the booster model and its power), as donor/outdoor antenna, is installed at the top of the roof to pick up good mobile signals from the base station, and sends them through the cable to the booster where the signals get amplified significantly; and then the output signals are distributed throughout the area by the indoor/server antenna. Clear phone calls or high speed mobile data are immediately achieved within the area.



A repeater kit includes:

- **Outdoor Antenna**□

Outdoor panel or wide band Yaggi is recommended.

Function: To pick up outside signals from the base station and send them by cable to the repeater; outdoor antenna also transmits the uplink signals from the repeater back to the base station.

- **Indoor Antenna:**

It is mounted inside a building to transmit the improved signals throughout the coverage area.

- **Cables:** Coaxial cables for indoor and outdoor antennas.

- **Mountings:** Special mountings for antennas and the booster (depends on a booster model)

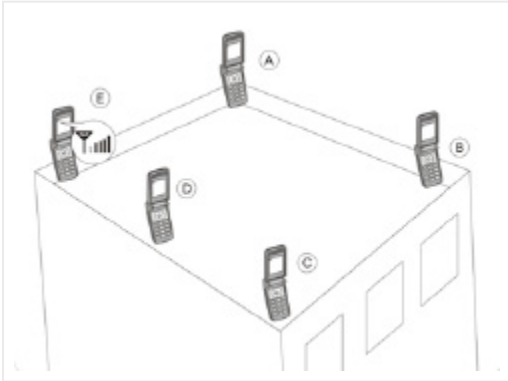
- **Power Supply**

Optionally:

- **Splitters** or couplers: when the building structure is too complicated or there is big loss due to thick walls or other reasons, splitters or couplers shall be used so that more antennas can be installed in separate zones to distribute the signals to each corner of the coverage area.
- **Additional indoor antennas:** when the building structure is too complicated

6. Antennas and Cables Setting Up

6.1. Outdoor antenna installation



The repeater's main function is to improve weak RF signals in an area. The formula is: $\text{Input power} + \text{Gain} = \text{Output power}$. The signal strength from an outdoor antenna directly affects the efficiency of the indoor coverage. It is very important to choose the correct outdoor antenna location in order to get the best signal.

- Testing signal strength received by an outdoor antenna using a mobile phone:

The mobile phone shall display full bar signals in location where the outdoor antenna is installed

Phone calls or data transmission shall be smooth and stable. It is recommended to test the signal 3 times in location where an outdoor antenna is to be installed

As shown from the illustration above, you should test the signals in points from A to E, and select a best place that displays full bar signals.

- Outdoor antenna installation Requirements:

Outdoor antenna should be installed on the roof of the house or in some other place where your mobile device is within coverage zone. Mobile signal should be as strong that at least three-four bars are indicated on your phone display.

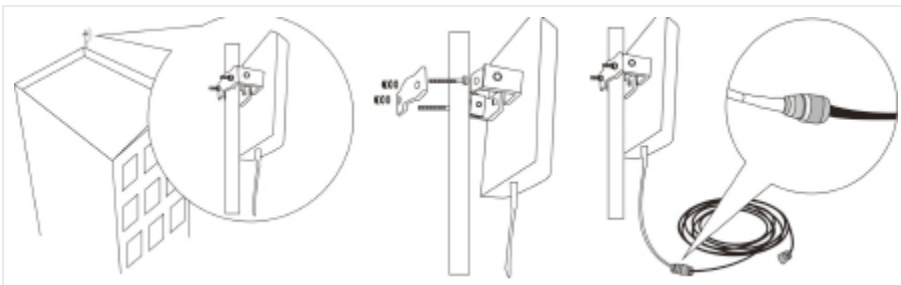
Outdoor antenna should be fixed in straightly.

It is necessary to waterproof connectors of the outdoor antenna and feeder lines.

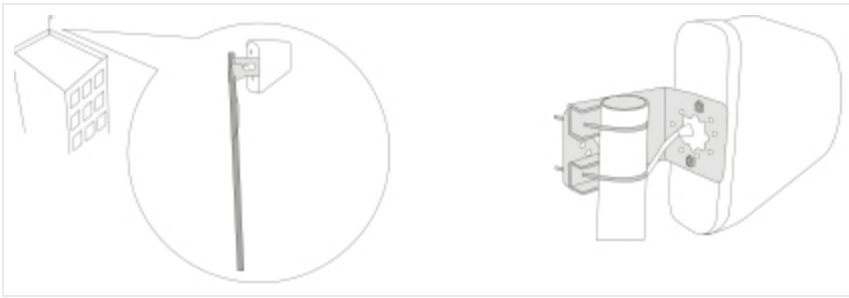
Repeater is a two-way signal amplifier. So proper isolation between outdoor antenna and indoor antenna is necessary in order to avoid self-oscillation. A perfect example of self-oscillation is when you take a MIC and a loudspeaker for example; if they are too close to each other, it could cause big noise.

If isolation can't be achieved due to limited distance, the roof of the building, walls or any other barriers can be used between antennas to increase isolation.

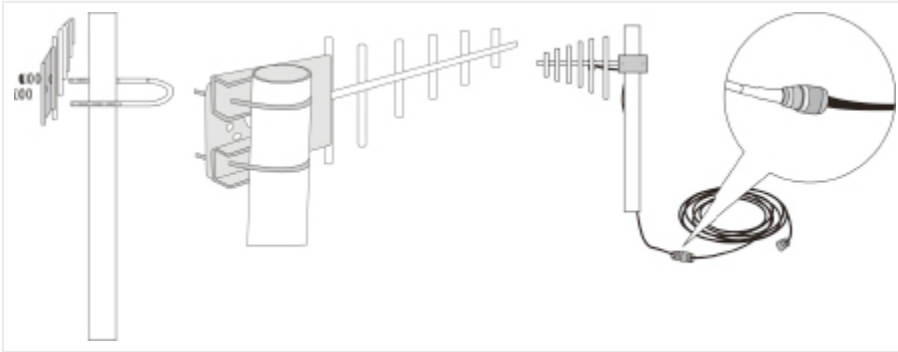
Installation of a panel antenna as an outdoor antenna



Installation of a wide directional antenna as an outdoor antenna



Installation of a Yaggi antenna as an outdoor antenna



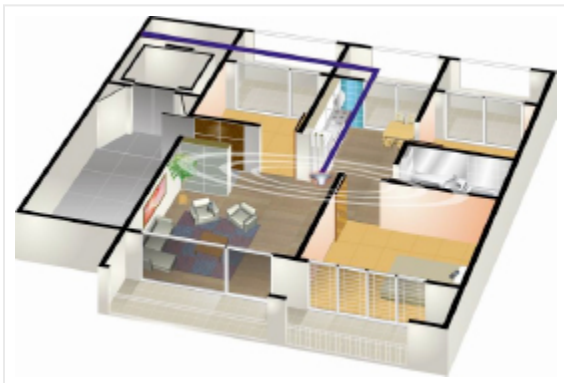
6.2. Cable layout and connector assembly

1. Keep the type, specifications, routing direction, location and curvature radius of cables in compliance with the model requirements. Place cables in correct order, bend them smoothly, and protect the surface from any damage.
2. Place RF cables separately from power cables. Take proper isolation measures if they have to be placed on the same cable racks owing to the site condition restrictions.
3. Fasten all connection parts of the whole system in correct order, from the antenna to repeater interfaces, and make sure that the electrical interfaces are well contacted. Give waterproof treatment to outdoor connection parts.
4. Take lightning protection measures for the antenna and feeder system in accordance with the system requirements. Avoid deforming the antenna feeder where grounding clips are placed, and give waterproof treatment to the feeder.

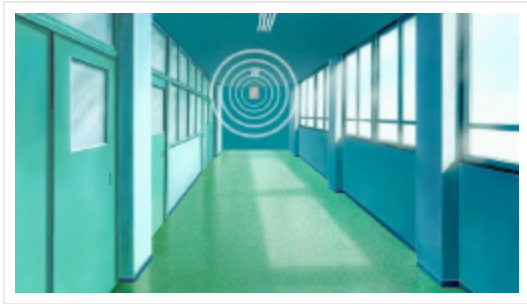
6.3. Indoor antenna installation

Correct antennas types shall be used according to the site conditions and the requirement.

1. Omni antenna (ceiling Omni or whip antenna) shall be installed in the center and radiate all directions.



2. It is better to use a directional panel antenna or Yaggi antenna when the area shape is long and narrow (corridors, long row of houses in two sides, tunnels or elevators or rural open space).



Requirements to indoor antenna installation:

- indoor antenna should be 5 meter distance from an outdoor antenna
- indoor antenna should be at least 2 meters above the ground
- indoor antenna should be fixed vertically with the ground.

7. Repeater Installation

7.1. Installation requirements

7.1.1. Installation Location Requirements

1. The repeater shall be installed indoor in a cool, dry and ventilated room without erosive gas or smoke, or on a cool and ventilated wall to ensure excellent heat dissipation.
2. Installation height should be sufficient for RF cable wiring, heat dissipation and maintenance.
3. Independent and stable power supply is necessary.

7.1.2. Power requirement

Generally AC 100~264V AC / 50±5Hz power supply is required.

7.2. Installation Steps

7.2.1. Installation schemes

INSTALLATION STEPS

1. Find an appropriate position for an outdoor antenna. (*see the requirements in 6.1. sect.*)
2. Plug in the outdoor antenna to the mobile booster from BS side and fasten tightly.
3. Plug in the indoor antenna to the mobile booster from MS side and fasten tightly. (*see the requirements in 6.1. sect*)
4. Connect the signal booster to the Power Supply.

!Some models have an inbuilt Power Supply. Please, examine the manual applied to your model, if your signal repeater kit doesn't include separate Power Supply, skip this step!

If the light indicator on the booster turns on it means the installation has been implemented correctly.

NOTE: Switch on the signal booster only after you connect outdoor and indoor antennas in the proper way!

5. Test the signal of your mobile telephone – a maximum quantity of bars should be indicated on the display of your phone in each corner of the location within booster coverage zone. In case the mobile signal is still instable try to change the position of the outdoor antenna for more proper one.

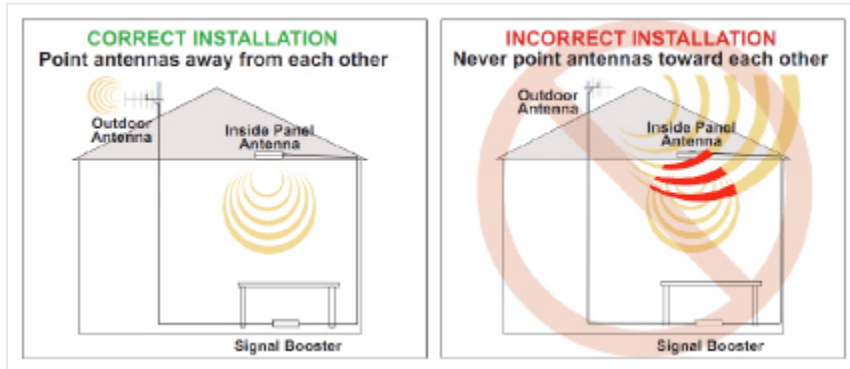
Important notes for installation:

1. Cables from outdoor antenna should not be wound and be placed as straight as possible in order not to create any hindrance for signal reception and its transmission.
2. Cables should be shortened to the acceptable maximum so that not to waste or decrease mobile signal coverage range.
3. In order to prevent water from coming into the mobile phone booster through the cable make a loop in it.
4. Keep the outdoor antenna as far as possible from frequency aerials, high voltage cables, metal nets or transformers.
5. Never point the front of a Directional outdoor antenna towards the indoor antenna.

6. Plug the power supply into the Signal Booster input (carefully, to avoid damaging the center pin) and then into a wall outlet.

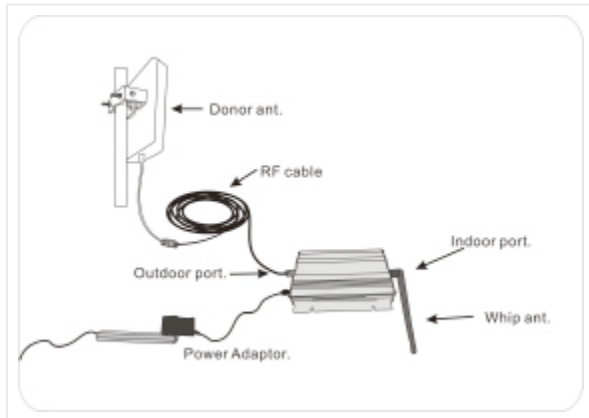
Note: It is recommended to plug all AC power supplies for home electronics into a Surge Protector Power Strip.

7. If the light indicator doesn't turn on, please see the lights indication instructions.
8. Using multiple Signal Boosters in one installation could cause interference to the base station (except for the In-Line Signal Boosters).



7.2.2. Repeater's ports description

1. Outdoor port: connected with the outdoor antenna by cable
2. Indoor port: connected with indoor antenna directly or by cable
3. DC IN: connected with power supply.



7.2.3. Accessories selection

Choosing accessories pay attention to the two characteristics – frequency and impedance. All accessories shall support the repeater's frequencies. For example, if the repeater's frequency is GSM900, all the accessories must support the GSM900 frequency.

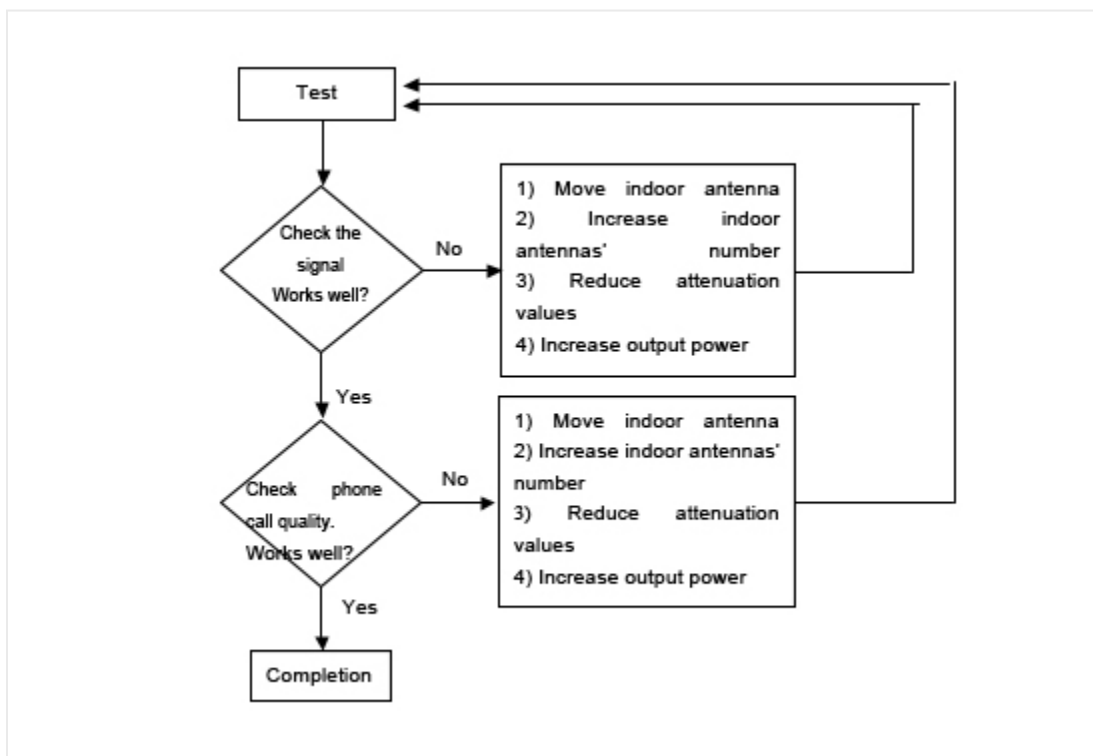
7.3. Repeater Settings

7.3.1. Indicator Light Instructions

7.4. System Test

7.4.1. Check whether the coverage is good

1. Take a test with a mobile phone or a data card (engineering mobile phone is preferred). If the signals in most areas have not been improved, please check recommendations below again:
 - Weak input signal leads to low output power. To increase input signal power level, change the direction of the outdoor antenna or its installation position or replace it for an antenna with higher gain.
 - Check whether it is necessary to use additional indoor antennas as barriers block signal penetration; also check whether the repeater's power is enough; please install extra indoor antennas or replace the repeater for another model with higher power level.
2. If the signals in small parts of the area have not been improved, please check the following:
 - Check whether the indoor antenna is installed correctly or not; you may try to change the antenna location to improve coverage.
 - Check if it is necessary to adjust the direction of the indoor antenna.
 - Check whether it is necessary to add one or more antennas to enhance the coverage in special areas.



Remark:

- **Reduce attenuation values** * — by ensuring the isolation level
- **Increase output power** * — recommended ways: to adjust outdoor antenna direction/location, or replace it to an antenna with higher gain to increase input signal strength.

7.4.2. Repeater can not communicate in Power-ON status

1. The power is on but there is a signal fluctuation or a flash signal. The phone call cannot be made/received.

It shall be caused by the insufficient isolation between outdoor and indoor antennas.

Please take the following measures:

- Firstly check whether the alarm LED lights. Compare with the description from the 7.3. section The light may indicate the isolation is insufficient.

- Secondly adjust the antennas' directions or locations or enlarge distance between them.
- Thirdly reduce the repeater's gain by ATT DIP if the above listed methods don't work.

The following measures can also be helpful:

- Use the roof of the building to enlarge isolation (Please try to place the outdoor antenna and indoor antenna on different floors).
- Use some obstacles (Such as walls).

2. The repeater's power is on but the phone cannot get connected to the network and still can not communicate.

Reason 1: There are loose or wrong connections in the repeater system.

Solution: Please try to fasten the connections between different parts of the system.

Reason 2: The signals received by outdoor antenna of other operators nearby are too strong. (For example, the other operators' signals are 10 dB stronger than the needed signals.)

Solution 1: Change the direction of the outdoor antenna or its installation position, so that the gap of signal strength is reduced between operators.

Solution 2: Use barriers (like buildings and walls) to block signals from other operators.

8. FAQ

1. Will booster increase the RF radiation?

No, it will decrease instead.

Every cell phone irradiates heavily being in zones with poor mobile signal as a cell phone is constantly in searching mode. The danger is your cell phone is about 2cm to your body, which makes its usage rather harmful. And when a booster is installed, it improves the mobile signals in the coverage, and your cell phone stops irradiating strongly, thus it will reduce the RF radiation of the mobile phone tremendously.

The maximum power level of booster is 0.01W, and it decreases to be maximum 0.001W when reaching indoor antenna. And since the indoor antenna is installed over the ceiling or onto the wall, there is usually more than 3 meter away from the human body, 3meter away means at least 40dB propagation loss, or 10000 times less, 0.0000001W, and therefore it is too weak to influence human bodies though it is still a very good signal for mobile phones.

2. If the power indicator is off after installing the repeater, what should I do?

Check if the repeater's power supply works normally or not.

3. If repeater's power supply is normal, ALM light is on or flashing all the time, what should I do?

Firstly, check whether all connectors are connected well or not. If it is all right, please, adjust the direction of the outdoor and indoor antenna. Make sure the horizontal distance is 75 feet or more, the vertical distance is 20 feet or more.

4. If the repeater and power supply are installed correctly, why the signal is still bad?

1. According to the steps above, verify if all the cables and connectors are connected correctly or not and correct the connections if necessary.
2. If connections are correct, please, adjust the direction of the outdoor antenna, point it towards BTS antenna, and make sure it can accept the strongest signal.

5. After installing the repeater, the signal is good, but the connection is slow or intermittent, or I cannot hear clearly the other side?

1. Please, check the indoor antenna position, and whether the cables and connectors are connected correctly or not.
2. Adjust the indoor antenna direction and make sure it can easily receive a cell phone signal.

9. About Anytone Brand

Shenzhen Anytone Technology Co. Ltd was set up in 2000. Since then the major aim of the company has been the introduction of innovative technologies and a customer-oriented approach. For these, and many other reasons, AnyTone has quickly gained popularity on the world market and has become widely recognized and trusted.

AnyTone has become the leader in its field for a multitude of reasons, such as:

- AnyTone is a trusted company that has been on the market for over a decade (13 years as at present);
- AnyTone is a certified company that meets all international standards of quality;
- AnyTone manufactures a wide array of mobile boosters. At present the line includes 53 models for personal needs and 24 for industrial use;
- AnyTone constantly cooperates with Samsung, Sony, General Electronics, etc;
- AnyTone cares about producing elegant and modern designs as well as technical perfection;
- AnyTone introduces the latest technologies into their production;

AnyTone was set up on the basis of Lisun Power, Linghua Electronics and other such-like famous Chinese-based companies. Professional specialists from these source companies joined their efforts in order to satisfy needs and wishes of modern citizens.

The name of the brand reflects its approach to work - "anytime anywhere is all tone". The purpose of AnyTone is to provide you with comfortable communications at anytime and anywhere you are.

Certificates





+44 2037691854 (UK) · +33 975122740 (France) · +16178610605 (US)

E-mail: contact@myamplifiers.com · Skype: [myamplifiers](https://www.skype.com/name/myamplifiers)

www.myamplifiers.com