

AUCTION

Terrey Collection of Vintage Radio



Photo:

**SESSION ONE – Sunday, September 18, 2016 – 11 am until Finish
The Barn at 498 Cross St., Carlisle, MA**

Destined to be the Vintage Radio Auction of the Decade!

Web Site: TerreyAuction.com

Auctioneer: Wayne Tuiskula (MA License # 2591)

Central Mass Auctions, Worcester, MA – www.centralmassauctions.com

Radio Auction Consultant: Bob Dobush, 126 S. Main St., Wellington, Ohio 44090



@ TERREY AUCTION



@ TERREY AUCTION

Lot 56: Adams Morgan RA-6



Lot 109: Atwater Kent Poster by McClelland Barclay (Detail)

Auction Session One

Sunday, September 18, 2016 AT 11:00 AM

Terrey Collection of Vintage Radio

Live Bidding on Site

The Barn, 498 Cross St., Carlisle, MA

For On-Site Bidders: Un-Cataloged Box Lots and Tag Sale

Internet, Absentee and Telephone Bidding Available

To arrange absentee and telephone bidding:

info@centralmassauctions.com – 508-612-6111

Preview:

Saturday, September 17 – Noon to 10 pm

BBQ Reception, Saturday September 17 – 6 pm to 9 pm

Sunday, September 18 – Before the Auction – 9am to 11 am

Auction Session Two

Sunday, November 13, 2016 AT 11:00 AM

Contact Info:

Auctioneer: Wayne Tuiskula (MA License # 2591)

Central Mass Auctions, 255 Park Ave Suite #1000, Worcester, MA 01609

www.centralmassauctions.com

info@centralmassauctions.com – 508-612-6111

Radio Auction Consultant: Bob Dobush, 126 S. Main St., Wellington, Ohio 44090

Consignor: John Terrey, 498 Cross St., Carlisle, MA 01741

TerreyAuction.com info@terreyauction.com

Copyright John V. Terrey 2016



Lot 295: RCA ET-3619 Transmitter & ET-3620 Rectifier



Lot 294: Pratt Tuning Aerial (Loop Antenna)

THE TERREY COLLECTION OF VINTAGE RADIO

THE STORY

I have been collecting old radios for a long time, in fact, for over 50 years!

In 1962, just after I graduated from MIT and started my first real job, my father visited me in Boston. Out of the blue, he gave me an old radio. He had been visiting a rancher in South Texas (where I was raised) and bragged about his electrical engineer son. The rancher excused himself for a moment and returned with an old radio. That set was the classic broadcast receiver from 1921, a Westinghouse RC/RADA, and that set is still in my collection today. There could have been no better set to start my collection!

That one set spawned a collection of nearly 1,000 radio items and now occupies 2,000 square feet in The Barn in Carlisle, MA. Many of you have visited, often following the winter Sunday morning RADIO flea markets. The guest book shows hundreds of entries from around the world.

So, how is it that I decided to offer the collection for sale through auction?

Over the years, I have attended many auctions, some of entire collections such as the 1,700+ item Ralph Muchow auction in 2001, the Robert Orr auction in Alabama in 1982 and the museum de-accession auction at the Ford Museum in Michigan in 1995. Yes, I purchased quite a few radios at these events.

I have realized, as did Ralph Muchow, "As collectors, we truly are temporary caretakers of these historical artifacts."

As a temporary caretaker, I want to host and meet these future caretakers of my sets! Thus, the two events this Fall. Each auction will be held on a Sunday, preceded by a preview/BBQ/reception on Saturday. Come one, come all, and share in this celebration of old radios and collecting. Enjoy the Grand Events even if you don't plan to bid.

ABOUT THE COLLECTION

That first Westinghouse RC set did not sit on the shelf by itself for long. In the 1960s and 1970s, the flea markets and antique stores of New England presented lots of old radios. By the late 1970s, the collection had grown to cover a wall of shelves in my basement rec room



Eventually, I happened upon an article about collecting old radios by Jim Fred in an electronics magazine. That article introduced me to Morgan McMahan's book, "Vintage Radio", which at that time was one of the very few books about radio collecting. As with so many collectors when they first see "Vintage Radio," I wanted to collect every radio in the book.

Once I found my way to radio collectors in the New England and radio collecting clubs, I began to realize that there were others with the same "collecting gene" that I had. I was not unique, just off kilter!

Our family vacationed on Cape Cod and there I ran across a small radio and sound museum. I recall that it had vintage phonographs and a few radios, including the small Howe crystal set. The Howe became the first entry on my new "want list".

Then, in one of the many antique shops on the Cape, I saw an RCA Radiola Grand receiver, an impressive set. But the set that really caught my eye was the Radiola III-A receiver on the counter, with its vacuum tubes poking out. The radios were not for sale, but my radio-collecting engine was shifted up a notch and more items were added to my want list.

My first radio meet was a 1980s AWA Conference in Canandaigua, N.Y. I wandered, gawking at "so many radios" in the flea market, on tables, blankets and the grass! After scouring the New England antique shops to find only a radio or two, here were piles of Grebes, Atwater Kent breadboards and box sets, Federals, early wireless sets and more. Yes, I added a few more sets to my collection.

I attended as many meets as I could, from Boston

to California, from Chicago to Louisville, from Texas to Minnesota and Michigan. I joined every radio-collecting club I could find, and was active in many. These experiences educated me rather quickly and more additions worked their way into my collection.

In my collecting education, I benefited from the work of older and established collectors. Many had contributed articles to journals, presented at meets and wrote books. One of the first books on battery sets after "Vintage Radio" was Alan Douglas's three-volume "Radio Manufacturers of the 1920s", which became the new standard for the battery set collector. I gradually realized I wanted to find a way to contribute in my own way to the radio collecting community.

That possibility materialized when at the Elgin, IL Radiofest, I bumped into Gary Schneider, who had founded a monthly magazine on radio collecting a year earlier. The magazine had become too "successful" for him to continue part time and he was looking for a buyer. I realized that this was "The Opportunity". Late one evening, in the bar, I became the publisher of "Antique Radio Classified". I continued to publish it for 24 years.

All this time I was adding radios to the collection. The single basement wall grew to a full room... then the living room upstairs... and everywhere in the house that a radio could be placed. Eventually, my wife suggested that it was time to build that barn, something that I had been fantasizing about for years. So The Barn was constructed in 2006, and the radio collection had a new home!

It took a few years to decide on the scope of the collection. Although a number of pre-broadcast and wireless items were included, I decided that early

broadcast sets would be the focus.

A FEW NUMBERS

The collection encompasses nearly all of the early items from Grebe (49 items, including the CR-1 through the CR-10), Adams Morgan (26 items, including the RA-6 tuner and the 2-5-U transmitter), R.C.A. (57 items, including Radiolas I through X), Federal (18 items, from the small "boxes", 8, 9, 55, 56 and 60 to the 57 to 61). Also included are items from Clapp-Eastham (59 items), Amrad (21 items), Crosley (63 items), Kennedy (18 items), Atwater Kent (39 items), John Firth (16 items), Magnavox (18 items), and Tuska (15 items).

The manufacturer listing above includes less than one-half of the collection. In addition, there are over 100 crystal sets, over 80 horn speakers and numerous loose couplers and crystal detectors! In fact, nearly 200 different manufacturers are represented.

THE AUCTION AND AFTER

In a few months this collection will be spread across the U.S. and beyond. Enjoy the photos here of the collection and if you want to see the complete collection before the auction, I invite you to come visit The Barn.

I plan next year to find the time and commitment to complete a book on the collection. Thousands of photographs have been taken for the auction catalogs, keeping in mind the requirements for a collection book. Actually, it is the book that helps me part with my old radios, for as a book, the collection will live on.

Happy collecting!

John Terrey, August 2016



A view of about 10% of the collection – An Ozarka immediate left, shelving for Atwater Kents left, Clapp-Easthams right, and an R.C.A. Radiola VII-B center.

FAQ (Frequently Asked Questions)

(Taken from the web site: TerreyAuction.com)

1a. Doesn't the Terrey Auction conflict with Kutztown?

Kutztown activities are over Saturday morning and the drive to the Terrey Auction in Carlisle, MA is about 5 to 6 hours. Yes, it's a trek, but there is a great BBQ awaiting you - from 6pm to 9pm. And, if you are later (the auction preview will run till 10pm or so) there will probably be some BBQ left! It will be a long weekend, but adding a couple more "radio days" onto your "radio trek" only means more fun. And, your fellow collectors will probably be racing you from Kutztown to Carlisle.

1b. Do I need to let you know that I am attending?

If possible, please click "Plan To/Might Come" so we can arrange for sufficient chairs/parking/food, etc.

2. Are you selling your entire collection?

Yes... well... almost all. I'll be keeping some sets... my first set, some sets needing repair, and some others just because I like them. However, essentially all significant sets will be in the auction. But, to keep each auction to about 300+/- lots, there will not be room for some of the more common items in the live auction; they may be included in the tag sale. You will not be disappointed!

3. When will the complete list be available?

The complete list should be posted in late August. Check out the website every few days or so. A printed catalog can be mailed; request at the "Request Catalog" choice above.

3a. I am an avid radio collector with limited means- why should I attend this auction when I likely will not be able to afford the prices?

This event is meant to appeal to as many as possible in the radio collecting world. There are over 300 lots in this auction, and quite a few box lots with topical contents – transformers, parts from specific makers, accessories, etc. – and these will not be sold on the Internet. There also will be a tag sale with books, radio accessories, speakers, etc. which also are not available on the Internet. And, don't forget the Saturday evening barbecue and preview!

4. Is provenance noted on the items?

All items in the cataloged auction have a sticker on the bottom noting that it is from the "Terrey Collection of Vintage Radio" along with an inventory number. In fact, a few of the items have prior provenance noted, such as from the Greenwood or Muchow collections.

5. What about the Box Lots?

There is a lot of RADIO STUFF in my 100s of storage boxes and will be included in the box lots: tube sockets, knobs, head phones, parts, quack medical, radio chassis, empty radio cabinets and more. Some will be organized by manufacturer (RCA parts, Amrad parts, etc.) You must attend to bid on the box lots.

6. Why a tag sale at an auction?

Rather than spending auction time for bidding on a \$25, \$50 or \$75 item, we decided to place some of the lower valued items in a tag sale. You must attend to buy at the tag sale, and the terms will be cash or check -- to keep it simple.

7. What will be the pace of the auction?

We are trying to hold the auction to about 300+/- cataloged lots, plus the box lots. This will probably take about 5-6 hours at a pace of about one per minute, or 60 per hour. Actually, 60 per hour is slow for many auctions; the pace usually is about 90/hour. We don't want the auction to be hurried. There will be a break from 1 to 1:30 for food, etc.

8. How will Internet, telephone and absentee (proxy or left) bids work?

Before the auctions, details on Internet, telephone and absentee (proxy or left bids) bidding will be posted here.

9. When will the Internet bidding site be available?

3-4 Weeks before the auction, the link to the auctioneer and his internet site will be posted here.

10. What are the buyer's fees?

For attendees who pay by check or cash, the fee will be 10%. There will be additional fees for paying by credit card and Internet bidding.

11. How will shipping be handled?

A local shipping company will do the shipping. We will coordinate their pick up of your items. However, BUYER MUST ARRANGE FOR PICKUP OF LARGE ITEMS.

12. What about consoles?

There are some large items in the auction. We hope that a live/present bidder will be the successful bidder, otherwise, the winning bidder must be prepared to pay hundreds of dollars to pack and ship the item safely. Another possibility is to make arrangements for an attendee to transport it for you. BUYER MUST ARRANGE FOR PICKUP OF LARGE ITEMS.

13. Will flea market-type selling be allowed in the parking areas?

As much as attendees might want to, flea-market-type setup and selling will not be allowed in the parking areas.

14. Will there be enough parking?

We can easily handle about 75 people on site. A shuttle is will be arranged if needed. *If possible, please click "Plan To/Might Come" so we can arrange for sufficient chairs/parking/food, etc.*

15. Will handicap parking be available?

Some reserved parking spaces near the tent will be available and portable bathroom facilities will be on the same level. Only the box lots and tag sale items will be on the second floor of the barn. *If possible, please click "Plan To/Might Come" so we can arrange for sufficient chairs/parking/food, and special needs.*

16. Will you be accepting offers on sets before the auction?

Definitely, "NO." Over the last several years, I have sold some sets. However, most were not from the core of my collection, which is early broadcast sets. But, when the decision was made to have a Grand Auction, my radio sales stopped. No sales will be made except at the auctions.

17. What about food?

At the Saturday preview, there will be a Grand, Free BBQ Reception, 6pm to 9pm. At the preview before the auction on Sunday, there will be some free stuff... coffee, donuts, etc. Also free, for lunch on Sunday, the thoughts are for pizza. There is a deli about 2-miles away and we will have a "runner" to pick up your take out orders.

18. What about lodging in the area?

Please see the lodging suggestions section.

19. What about condition, working status, correct transformers, etc.?

ALL ITEMS ARE SOLD AS IS, WHERE IS, WITH ALL FAULTS. Examine the items and look at the photos carefully for condition. We have attempted to point out major flaws, not-original items, etc. in the item descriptions. Although we did check tubes in many of the sets and have noted same, transformer continuity and correctness was not checked. A few tubes were stuck in their sockets and have not been removed and checked. Personal inspection is strongly suggested for all items. Not all items have been disassembled and, in fact, I have never looked inside many of the sets. On some of the photos, the color might be off, too dark, etc. If more details are needed, visit or request using the auction email: info@TerreyAuction.com. AGAIN, ALL ITEMS ARE SOLD AS IS, WHERE IS, WITH ALL FAULTS. Final conditions of sale will be available on the day of the auction and will take precedence to this paragraph.

20. Do you spell your name Terrey or Terry?

The correct spelling is "TERREY". It's just the renegades who use "Terry". Please be careful to type it in correctly: TerreyAuction.com



TERMS OF SALE – SESSION ONE TERREY AUCTION OF VINTAGE RADIO

Central Mass Auctions are estate and antique specialists handling estates throughout the Northeast and beyond. We sell a wide range of items - Period Furniture, paintings comic books & cards, etc.

Central Mass Auctions, 255 Park Ave Suite #1000, Worcester, MA 01609

508-612-6111 – info@centralmassauctions.com – www.centralmassauctions.com

For onsite purchases, payment may be made with cash, Visa, MasterCard, debit card or pre-approved check. Credit card payments for auction purchases cannot exceed \$5,000. Auctioneer reserves the right to hold merchandise purchased until funds have cleared. 15% Buyer's Premium with payment by VISA or MasterCard onsite the day of the sale. 10% Buyer's Premium with cash or check onsite the day of the sale.

Phone and Absentee Bids Accepted – VISA or MasterCard information is required to register for absentee or phone bidding. Payment must be made by check, money order or cash. Email or call for additional details. 10% Buyer's Premium for cash or check payment by absentee and phone bidders. Payment must be received by Friday, September 23rd for all winning purchases.

Internet bidding is available through Proxibid at www.proxibid.com. Bidders must register in advance and submit VISA or MasterCard information. Winning bidders credit cards will be charged through Proxibid's Auction Payment Network (APN) by September 19th. Please see additional Proxibid terms on our auction listing on their website. 15% Buyer's Premium for items purchased through Proxibid.

Winning bidders may pick up their items or arrange for shipment. Please bring boxes and any packaging materials you may need for your purchases. As a courtesy, Central Mass Auctions will deliver items, with certain exceptions for large items as noted, to Worthington Box 13 Worcester Road, Charlton, MA for shipment. Worthington Box is a FedEx authorized shipper. Please contact Worthington Box in advance for any questions regarding rates, special packing requirements or for any other matter prior to bidding at 508-248-7370. Central Mass Auctions is not responsible for any damage from transporting or shipping of items.

Please bring a copy of your Massachusetts resale certificate when you register if you are tax exempt. Absentee bidders may email or send their resale certificate through U.S. Mail. Proxibid bidders need to enter their tax exempt ID when they register for the auction.

Central Mass Auctions reserves the right to hold purchases until funds have cleared. Winning bidders must remove items from the auction location by Saturday October 8th, after payment has cleared. Please contact us 2 days prior to your pickup time to make arrangements. Items not removed by October 8th without written permission of the auctioneer will be considered abandoned property.

License #2591 – Auctioneer: Wayne Tuiskula

Subject to errors & omissions



*Lot 112. Beaver Electric Corp. Beavertone.
"The first cathedral radio!" A battery set.*



Lot 192. GGH Majestic 45 with White Pyralin Horn Speaker.

Session #1 - Auction - Terrey Collection of Vintage Radio

1. Acme Acmeflex. 4-tube set. Uses Acme components. No tubes.

Estimate Low/High: 80 / 200



© TERREY AUCTION

5. Acme Y-1. Detector Unit for WD-11 type tube base. With good filament UX-201 and adapter.

Estimate Low/High: 80 / 150



2. Acme Acmeflex. 4-tube set. Uses Acme components. With (4) Bakelite base tubes, display.

Estimate Low/High: 80 / 175



© TERREY AUCTION

6. Acme Y-2. Amplifier Unit with (1) brass base, tipped display tube.

Estimate Low/High: 80 / 150



© TERREY AUCTION

3. Acme 4-Tube Receiver. With (4) Bakelite base tubes, filament OK.

Estimate Low/High: 100 / 300



© TERREY AUCTION

7. Acme DY-10. Scarce. 2-Stage AF Amplifier. Includes good original box. With (2) brass base tubes, filament OK. Nice label in lid.

Estimate Low/High: 300 / 700



© TERREY AUCTION

4. Acme Y-1. Detector Unit (UV type tube base). With (1) brass based, tipped tube, good filament.

Estimate Low/High: 80 / 150



© TERREY AUCTION

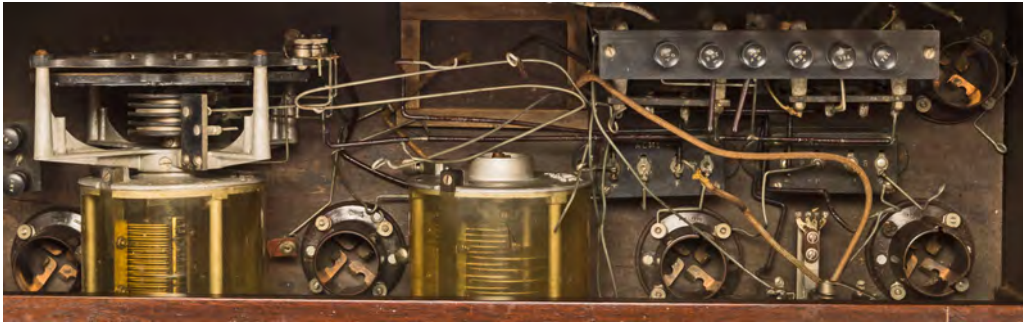
8. Acme DY-12. Scarce. Detector & 2-Stage AF Amplifier. With (3) Bakelite base tubes, filament OK. Nice label in lid.

Estimate Low/High: 300 / 700

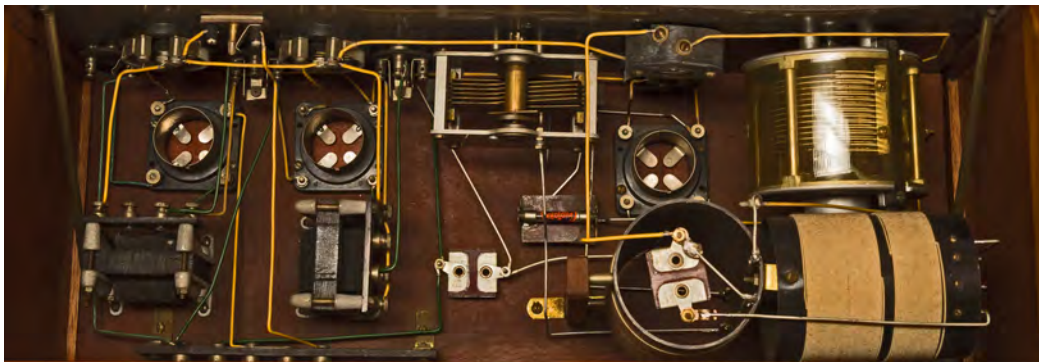


© TERREY AUCTION

INTERESTING ACME, AMPLION AND ADAMS MORGAN LOTS



Lot 11. To the left is the Acme "D" Coil Tuner, "... a tuned R.F. transformer mounted on the shaft of an Acme low loss condenser so it can be tuned simultaneously..."
Lots 9 and 12 also have the Acme "D" Coil Tuner.



Lot 10. This Acme incorporates the New York Evening Journal Filter Tuner, on the right. "It tunes with the sharpness of a multi-tube set..."



© TERREY AUCTION



© TERREY AUCTION

Lot 26: The ornate Amplion Patrician horn speaker is on the left
Lot 67: The Adams Morgan 2-5-U transmitter is on the right.

Session #1 - Auction - Terrey Collection of Vintage Radio

9. Acme Acmeflex. 5-tube set using the Acme "D" coil tuner and large audio transformers. Cabinet by R-E-Z Cabinet Co., 54 North St., Boston, Mass. With 5 tubes, untested. An impressive set!

Estimate Low/High: 80 / 200



13. Acme Loose Coupler. An interesting loose coupler design. Excellent condition.

Estimate Low/High: 100 / 200



10. Acme Acme 3-tube receiver. Acme set with the New York Evening Journal "Filter Tuner", paperwork included. Acme parts. No tubes.

Estimate Low/High: 80 / 200



14. Air-Way Co. F. 4-tube receiver. 1 RF, 2 AF. Natural wood chassis. (4) Bakelite based tubes, filament OK. Has tag on lid.

Estimate Low/High: 250 / 550



11. Acme - Clark's Acme Reflex. 5-tube receiver. Using Acme components and the Acme "D" coil tuner. Partially wired. No tubes. Panel engraved: Clark's, 30 Boylston St., Boston."

Estimate Low/High: 80 / 150



15. Air-Way Co. F. 4-tube receiver. (1) RF, (2) AF. Natural wood chassis. Has tag in lid. No tubes. Cabinet fair to good.

Estimate Low/High: 200 / 400



12. Acme Homebrew. 5-Tube set. Uses the Acme "D" coil tuner. Has a built-in Full-A-Tone horn across top of cabinet. With (5) Bakelite base tubes, filament OK. Impressive!

Estimate Low/High: 100 / 300



16. Air-Way Co. G. 5-tubes, RF Amp, Detector. AF Amp. (5) Bakelite tubes, filament OK. The top of the line Air-Way receiver!

Estimate Low/High: 400 / 900



Session #1 - Auction - Terrey Collection of Vintage Radio

17. Air-Way Co. 41. 4-tube receiver. No tubes.

Estimate Low/High: 100 / 250



21. Amplifex Loop Antenna, folding, with compass. Original, in fair to good condition.

Estimate Low/High: 200 / 450



18. Air-Way Co. 51. 5-tube receiver. 2-Stages RF; Detector; 2-Stages AF. (5) Bakelite based tubes, untested.

Estimate Low/High: 100 / 150



22. Amplion AR-19 Horn speaker. Wood pedaled horn speaker, driver OK.

Estimate Low/High: 250 / 500



19. Air-Way Co. 61. 6 tube broadcast receiver. Panel has flaws. No tubes.

Estimate Low/High: 80 / 150



23. Amplion AR-114. Wood pedaled horn speaker, driver OK.

Estimate Low/High: 250 / 500



20. Air-Way Co. (?) 1-Tube Receiver. 1 tube receiver with Airway components, (3) variometers/variocouplers. 1 Bakelite based tube, display. Left side of panel warped. Possibly made up.

Estimate Low/High: 100 / 200



24. Amplion AR-111. Metal bell, horn speaker, driver OK.

Estimate Low/High: 250 / 500



Session #1 - Auction - Terrey Collection of Vintage Radio

25. Amplion Dragonfly Horn Speaker. Smallest Amplion speaker, metal bell, driver OK.

Estimate Low/High: 200 / 600



29. Amplion AC-12 cone speaker. Driver OK. Cabinet good.

Estimate Low/High: 100 / 200



26. Amplion Patrician Horn Speaker. Ornate open wood grille cabinet containing curved horn inside. Driver OK.

Estimate Low/High: 500 / 1200



30. Amrad 2575 Crystal Set. Crystal Set with detector on upper left of panel.

Estimate Low/High: 350 / 600



27. Amplion AR-39. Straight neck horn speaker, driver OK.

Estimate Low/High: 250 / 500



31. Amrad Type-E Crystal Set. Crystal receiver with detector on lower right. (It is tiny, just a wire from the lower right terminal to the crystal just above.)

Estimate Low/High: 250 / 700



28. Amplion AR 38. Early, traditionally styled horn, driver OK.

Estimate Low/High: 200 / 500



32. Amrad 2645 Variometer. Vernier Variometer, no rear cover. With auxiliary tapped coil accessory.

Estimate Low/High: 100 / 250



Session #1 - Auction - Terrey Collection of Vintage Radio

33. Amrad 2753 Coupler.

Estimate Low/High: 100 / 250



37. Amrad 2771 VT Detector. With (1) brass, tipped tube, filament OK.

Estimate Low/High: 125 / 350



34. Amrad D-1 Variometer. Medium Wave

Estimate Low/High: 100 / 200



38. Amrad 2776 2-Stage AF Amplifier. With (2) brass tipped UV-201, filament OK.

Estimate Low/High: 250 / 500



35. Amrad Wavemeter.

Estimate Low/High: 75 / 200



39. Amrad 3071 2-Stage RF Amplifier. Scarce! With (2) Bakelite tubes, filaments OK.

Estimate Low/High: 800 / 1500



36. Amrad Type A VT Detector. Early! Tube socket inside. No tube included.

Estimate Low/High: 150 / 300



40. Amrad 3366 Crystal/Reflex Receiver. 1 tube, standard version. Crystal detector correct, but rusted. With (1) Bakelite tube, filament OK. Missing tube cover.

Estimate Low/High: 600 / 1500



Session #1 - Auction - Terrey Collection of Vintage Radio

41. Amrad 3366 Crystal/Reflex Receiver. 1-tube, larger panel version - in custom display cabinet.

Estimate Low/High: 300 / 900



© TERREY AUCTION

45. Amrad 3500-U 6 unit set. Includes: 2771, (2) 2766, 3290, 2753 and Secondary unit. with (3) Bakelite tubes, filaments OK.

Estimate Low/High: 800 / 2000



© TERREY AUCTION

42. Amrad 3366 Table Console. Model 3366 reflex receiver mounted in a table/console cabinet. With built-in horn speaker and wind-up phonograph. Phonograph swings out from end of cabinet. Crystal detector missing parts.

Estimate Low/High: 200 / 600



© TERREY AUCTION

46. Amrad 3670 Portable Receiver. Set with crystal/reflex circuitry. With WD-12 (filament OK). Appears complete, both lids, (including crystal detector) but missing the handle and straps.

Estimate Low/High: 500 / 1500



© TERREY AUCTION

43. Amrad 3500-1. 3475 Broadcast tuner & 2634 Detector & 2-stage AF Amplifier. Locking slot on rear transformer socket damaged. Transformer included.

Estimate Low/High: 500 / 950



© TERREY AUCTION

47. Amrad Neutrodyne. With (5) Bakelite tubes, filament OK.

Estimate Low/High: 125 / 250



© TERREY AUCTION

44. Amrad 3500-3 Inductrol. 4-tube set. With brass base tubes, filament OK.

Estimate Low/High: 150 / 350



© TERREY AUCTION

48. Adams Morgan Co. RA-10, Continental Radio, Distributor. Regenerative tuner. Appears complete. Engraved on panel: "Paragon Regenerative Receiver type RA-10" Metal panel tag: "Adams Morgan Co. Manufacturers"

Estimate Low/High: 300 / 600



© TERREY AUCTION

Session #1 - Auction - Terrey Collection of Vintage Radio

49. Adams Morgan Co. RA-10. Regenerative tuner. Appears complete. Engraved on panel: "Paragon Regenerative Receiver type RA-10." Metal panel tag: "Paragon Regenerative Receiver Manufactured by Adams Morgan Co." Estimate Low/High: 300 / 600



53. Adams Morgan Co. A-2. 2-Stage AF Amp. 2 brass based, tipped tubes, with filament OK.

Estimate Low/High: 300 / 900



50. Adams Morgan Co. DA-2. Detector, 2-stage AF amplifier. 3 brass based, tipped tubes filament OK.

Estimate Low/High: 300 / 600



54. Adams Morgan Co. RAS. Scarce regenerative receiver.

Estimate Low/High: 500 / 1500



51. Adams Morgan Co. RD-5. With (1) brass base, tipped display tube.

Estimate Low/High: 300 / 500



55. Adams Morgan Co. 10-R. RF amplifier. 1 brass based, tipped tube, filament okay.

Estimate Low/High: 200 / 600



52. Adams Morgan Co. RD-5 Variant. With (1) brass based tube, filament OK.

Estimate Low/High: 800 / 2000



56. Adams Morgan Co. RA-6. Very desirable, rare, early Adams Morgan receiver.

Estimate Low/High: 6000 / 15000



Session #1 - Auction - Terrey Collection of Vintage Radio

57. Adams Morgan Co. RB-2. Includes battery compartment in cabinet. 3 brass based tubes filament OK.

Estimate Low/High: 300 / 600



© TERREY AUCTION

61. Adams Morgan Co. Silicon-Antimony Detector. Original!

Estimate Low/High: 350 / 700



© TERREY AUCTION

58. Adams Morgan Co. RB-2A. No battery compartment in cabinet. With (3) Bakelite base tubes, filaments OK.

Estimate Low/High: 250 / 500



© TERREY AUCTION

62. Adams Morgan Co. VT Control Unit. 1-Tube unit. 1 brass based, tipped tube, filament OK.

Estimate Low/High: 75 / 160



© TERREY AUCTION

59. Adams Morgan Co. Crystal Detector. Horizontal Detector with compression contact. After a little cleaning, a great piece. Appears original.

Estimate Low/High: 200 / 400



© TERREY AUCTION

63. Adams Morgan Co. Paragon Crystal Set. In leatherette box with lid. Gold lettering in lid.

Estimate Low/High: 100 / 300



60. Adams Morgan Co. Crystal Detector. Arm with ball adjustment with vertical contact. (Item possibly not correct)

Estimate Low/High: 50 / 150



© TERREY AUCTION

64. Adams Morgan Co. Two. 2-tube receiver. With (2) Bakelite based tubes, display.

Estimate Low/High: 150 / 250



© TERREY AUCTION

Session #1 - Auction - Terrey Collection of Vintage Radio

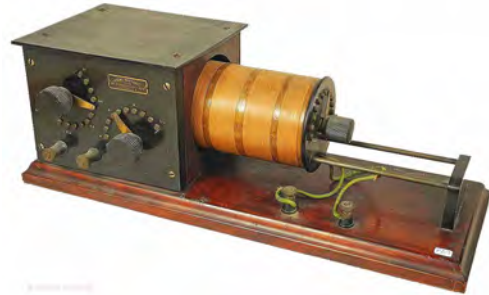
65. Adams Morgan Co. Three. 3-tube receiver. With (3) Bakelite based tubes, display.

Estimate Low/High: 150 / 250



69. Adams Morgan Co. Loose Coupler - Navy Type. Appears original, nice tag.

Estimate Low/High: 200 / 500



66. Adams Morgan Co. Four. 4-tube receiver. Regenerative RF amplifier, detector, 2-stages AF amplifier. No tubes.

Estimate Low/High: 100 / 300



70. Adams Morgan Co. (?) Meter Box. Adams Morgan box with 3 Weston meters (1 voltmeter, 2 ammeters). Possibly made-up vintage item, nice.

Estimate Low/High: 200 / 350



67. Adams Morgan Co. 2-5-U. Scarce. Transmitter. With two UV-202, brass base, tipped tubes, one with good filament.

Estimate Low/High: 1800 / 4000



71. Adams Morgan Co. (?) Detector/Amplifier. Detector, 1-stage AF amplifier. In Adams Morgan cabinet. Brass based display tubes. Probably a made-up item, but nice.

Estimate Low/High: 200 / 400



68. Adams Morgan Co. Condenser. Original. In 6" x 5 1/2" x 4 1/2" cabinet. (Missing panel screw has been replaced)

Estimate Low/High: 50 / 150



72. Amsco Products Inc. Melco Supreme. 4-tube, TRF receiver employing Acmedyne circuit. Uses unusual Telos tunable RF Vario-Transformers. With (4) Bakelite display tubes.

Estimate Low/High: 500 / 900



Session #1 - Auction - Terrey Collection of Vintage Radio

73. Atlas Cabinet Horn Speaker. Oval shaped cabinet. Good driver.

Estimate Low/High: 100 / 300



77. Atwater Kent Breadboard 4066. With (5) brass based, tipped tubes, including metal caps. Filament OK. With (2) upright audio transformers. No tags.

Estimate Low/High: 600 / 1500



74. Atwater Kent Breadboard 3945. 3-tube set. The variometer (center) was not sold with the set; the buyer purchased it separately and installed it to achieve regeneration. With (3) Bakelite tubes, filament OK. No tags.
Estimate Low/High: 900 / 1500



78. Atwater Kent Crystal Set Breadboard. Appeared on cover of A.R.C. August 1989. No tags.

Estimate Low/High: 500 / 1200



75. Atwater Kent Breadboard 3975. 3-Tube breadboard with variocoupler and variometer. Detector & 2-stage amp. With (3) Bakelite tubes, filament OK.. With (2) tags.

Estimate Low/High: 600 / 1200



79. Atwater Kent Model 9-C (4660). 4 Tubes, 2 RF coils, 2 variable condensers. With (4) brass based tipped tubes. (3) with filament OK. With (2) tags.

Estimate Low/High: 800 / 1500



76. Atwater Kent Breadboard 4052. Bread board with (4) brass based, tipped, display tubes, Type 11 tuner and audio transformer. No tags.

Estimate Low/High: 900 / 1500



80. Atwater Kent Model 10 (4600). With (5) Bakelite based tube, filaments OK. With (2) paper tags.

Estimate Low/High: 500 / 1100





Atwater Kent Breadboards, top to bottom, Lots: 77. 79. 80. 81. 83

Session #1 - Auction - Terrey Collection of Vintage Radio

81. Atwater Kent Model 10-A (4550). With (5) Bakelite base tubes, filament OK. Has (2) paper tags, one is damaged.

Estimate Low/High: 500 / 1100



© TERREY AUCTION

85. Atwater Kent Model 19 (4880). 4 Tubes, 1-stage RF, Detector, 2-Stages AF. No tubes.

Estimate Low/High: 200 / 350



© TERREY AUCTION

82. Atwater Kent Model 10-C (4950) in Pooley Console Cabinet. Tear in grill cloth. With (5) Bakelite tubes, filament OK. BIDDER MUST ARRANGE FOR PICKUP.

Estimate Low/High: 350 / 900



© TERREY AUCTION

86. Atwater Kent Model 20 (4640), Large, "Big Box". 5 Tubes, 2-stages RF, Detector, 2-Stages AF. No tubes.

Estimate Low/High: 125 / 400



© TERREY AUCTION

83. Atwater Kent Model 12 (4600 with 4340 tag). With (6) Bakelite tubes, filaments OK. With (2) paper tags.

Estimate Low/High: 650 / 1200



© TERREY AUCTION

87. Atwater Kent Model 20 Compact. 5 Tubes, 2-stages RF; Detector; 2-Stages AF. With warranty on bottom, as well as tag and label. With (5) Bakelite tubes, filament OK.

Estimate Low/High: 125 / 250



© TERREY AUCTION

84. RPM One-tube Audio Amplifier "Island". Similar to Atwater Kent breadboard components. With 1 Bakelite display tube.

Estimate Low/High: 100 / 300



© TERREY AUCTION

88. Atwater Kent Model 20 Deluxe 4920 (AKA Model 24). 5 Tubes, 2-stages RF; Detector; 2-Stages AF. With (5) Bakelite tubes, filament OK.

Estimate Low/High: 125 / 250



© TERREY AUCTION

Session #1 - Auction - Terrey Collection of Vintage Radio

89. Atwater Kent Model 5-A. 5-A receiver, 5-tube. Unusual, similar to model 20 "Big Box". No tubes.

Estimate Low/High: 200 / 600



93. Atwater Kent Model 32 (8270). 7 Tubes, 4-stages RF, Detector, 2-stage AF. With battery cable. No tubes.

Estimate Low/High: 50 / 90



90. Atwater Kent Model 21 Dry Cell Set 7780. 5 Tubes, 2-stages RF, Detector, 2-Stages AF. With (5) 199-type tubes, filaments OK.

Estimate Low/High: 125 / 300



94. Atwater Kent Model 33 (8930). 6 Tubes, 3-stages RF, Detector, 2-stages AF. Has antenna adjuster. With (6) Bakelite base tubes, filament OK.

Estimate Low/High: 50 / 120



91. Atwater Kent Model 30. 6 Tubes; 3-stages RF, Detector, 2-stages AF. With (6) Bakelite tubes, filament OK. With warranty tag

Estimate Low/High: 80 / 150



95. Atwater Kent Model 35 and Wave Trap. 6 Tubes; 3-stages RF, Detector, 2-stages AF. Note that tubes hang upside down. Also called the Bath tub set. With 6 Bakelite tubes, filament okay. With "matching" wave trap, not made

Estimate Low/High: 100 / 200



92. Atwater Kent Model 30 in Pooley Cabinet. Unusual, 6 Tube console; 3-stages RF, Detector, 2-stages AF. Horn opening out side. WINNING BIDDER MUST ARRANGE FOR PICKUP.

Estimate Low/High: 100 / 400



96. Day-Fan Junior and Wave-Trap. 6-tube "Bathtub" Similar to Atwater Kent model 35. Sold with wave trap.

Estimate Low/High: 150 / 450



Session #1 - Auction - Terrey Collection of Vintage Radio

97. Atwater Kent Model 48 (9840). 6 Tubes; 3-stages RF, Detector, 2-stages AF. Similar to Model 30, but gold panel. With (6) Bakelite base tubes, filament OK.

Estimate Low/High: 50 / 100



© TERREY AUCTION

98. Atwater Kent Model 49 (9860). 6 Tubes; 3-stages RF, Detector, 2-stages AF. Similar to Model 33, but "gold" panel. Has antenna adjuster. With battery cable. With (6) Bakelite based tubes, filament OK.

Estimate Low/High: 50 / 100



© TERREY AUCTION

99. Atwater Kent Model 50 (8500). Scarce set! 7 Tubes. 4-stages: RF, Detector, 2-stages AF and detector. Components enclosed in metal boxes with removable lids.

Estimate Low/High: 600 / 1500



© TERREY AUCTION

100. Atwater Kent Model 55 in Kiel Golden Voice Table. Table in good condition. Tubes not tested. WINNING BIDDER MUST ARRANGE FOR PICKUP.

Estimate Low/High: 100 / 500



© TERREY AUCTION

101. Atwater Kent Model L. Horn speaker. Driver OK.

Estimate Low/High: 75 / 250



© TERREY AUCTION

102. Atwater Kent Model R. Horn speaker. Driver OK.

Estimate Low/High: 75 / 250



© TERREY AUCTION

103. Atwater Kent Display: Radio Artists. Colorful, 3-D, curved standup display. 27" high, 20" wide and 7" deep. The photo(s) tell the story!

Estimate Low/High: 500 / 1500



© TERREY AUCTION

104. Atwater Kent 3-Panel Folding Display with Ship Motif. Black background with Clipper ship. 48" x 20" overall.

Estimate Low/High: 125 / 400



© TERREY AUCTION

Session #1 - Auction - Terrey Collection of Vintage Radio

105. Atwater Kent Banner with Model 10 Breadboard. Shows Model 10 breadboard. 17 1/2" x 20". Slight crumpling on right edge. With original mailing tube and letter from company.

Estimate Low/High: 100 / 300



109. Atwater Kent Poster, large, original, by McClelland Barclay. Woman lying next to AK Model 35 & speaker. 42" by 20". Barclay was a member of Art Students League, Artists Guild and others. Reflections from protective plastic. Estimate Low/High: 600 / 900



106. Atwater Kent Newspaper Advertisement, Distributors, Large. Newspaper advertisement, framed, displaying authorized Atwater Kent dealers. 22 3/4" x 34".

Estimate Low/High: 100 / 300



110. Atwater Kent Sign, Illuminated, Glass with Base. Working, original, advertising item. Enjoy the photos.

Estimate Low/High: 600 / 1200



107. Atwater Kent Photo - Factory Visitation, September 25, 1928. Distributor representatives from Western Pennsylvania and West Virginia photographed standing in front of factory. 31" x 11 1/2".

Estimate Low/High: 100 / 300



111. Atwater Kent Sign, Red & Gold. Colorful, framed Atwater Kent sign. 23" x 18" wide.

Estimate Low/High: 100 / 300



108. Atwater Kent Photograph - "The Factory Behind the Product". 27 1/2" x 17 1/2". Some water staining at edge. Glass needs cleaning.

Estimate Low/High: 100 / 300



112. Beaver Electric Corp. Beavertone. "The first cathedral radio!" A battery set, no tubes. Scarce.

Estimate Low/High: 300 / 800



Session #1 - Auction - Terrey Collection of Vintage Radio

113. Bennett Auditorium Horn Speaker. Scarce, driver OK.

Estimate Low/High: 200 / 800



117. Burns Horn Speaker. Black driver. Missing (1) binding knob. Driver OK.

Estimate Low/High: 200 / 500



114. Betts and Betts Co. D2A. Rare, 3-tube item, detector and amp. With (3) Bakelite base tubes, filaments OK.

Estimate Low/High: 100 / 300



118. Burns Horn Speaker. Black driver. Driver OK.

Estimate Low/High: 200 / 500



115. Betts and Betts Co. Tuner. Rare, 2 tuning knobs.

Estimate Low/High: 100 / 300



119. Burns Model 205B Horn Speaker. Chrome driver. Repair at base of horn bell. Driver OK.

Estimate Low/High: 100 / 200



116. Brush Bug Crystal Set. Missing slider on coil. Ceramic is clean. Fixed detector inside.

Estimate Low/High: 400 / 900



120. Cambridge Sanitary Co. Ceramic Horn Speaker. Horn Speaker supplied with Baldwin driver. Horn condition is very good, rubber "coupling" is dried out. Baldwin driver fits loosely.

Estimate Low/High: 100 / 300



Session #1 - Auction - Terrey Collection of Vintage Radio

121. Canova Coffee Can Crystal Set. Appears to be a manufactured set. Unusual!

Estimate Low/High: 75 / 250



125. Chicago Radio Labs. AGN2. 3-tubes, detector & 2-stage Amplifier. With (3) brass based, tipped tubes, (2) filaments OK. Rare! See photos for details.

Estimate Low/High: 3000 / 9000



122. Cheever, Wm. Co. Wecco Crystal set. Very good original condition.

Estimate Low/High: 75 / 200



126. Chicago Radio Labs. AM-2 (Audion Amplifier). With (2) Moorhead display tubes. Scarce. See photos for details.

Estimate Low/High: 1500 / 4000



123. Cheever, Wm. Co. Wecco Gem Crystal set. Very good original condition.

Estimate Low/High: 75 / 200



127. Chicago Radio Labs. PAR (Authentic?). Appears to be a C.R.L. item, but tag is different from others. No cabinet back.

Estimate Low/High: 1000 / 3000



124. Chicago Radio Labs. PAR. Tuner. Original. Scarce, see photos for details.

Estimate Low/High: 4000 / 12000



128. Chicago Radio Labs./Clone PAR. Tuner. Nice display item.

Estimate Low/High: 500 / 900



Session #1 - Auction - Terrey Collection of Vintage Radio

129. Clapp-Eastham Co. Blitzen Receiver. Rare. Includes Blitzen tuner/receiving transformer, rotary variable condenser and Ferron detector.

Estimate Low/High: 600 / 3000



133. Clapp-Eastham Co. HR. 1-tube Regenerative Receiver Mahogany Cabinet. With battery.

Estimate Low/High: 100 / 300



130. Clapp-Eastham Co. Blitzen Tuner. Scarce. Variometer with taps. 30 primary and 12 secondary contact points.

Estimate Low/High: 100 / 400



134. Clapp-Eastham Co. HR. 1-tube Regenerative Receiver Oak Cabinet

Estimate Low/High: 100 / 300



131. Clapp-Eastham Co. ZRF. Tuner. Scarce. Herald Greenwood tag.

Estimate Low/High: 700 / 1500



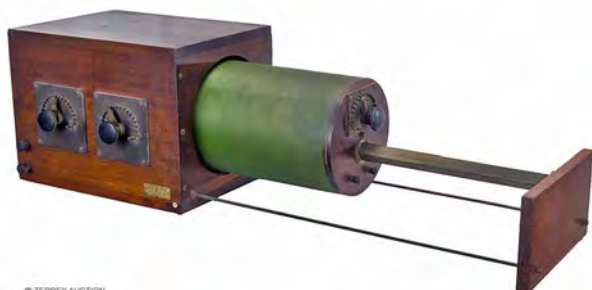
135. Clapp-Eastham Co. HZ. 2-tube AF Amplifier Mahogany Cabinet

Estimate Low/High: 100 / 300



132. Clapp-Eastham Co. Long wave loose coupler. Scarce. 35" long! Original large loose coupler with tag. See photos for detail.

Estimate Low/High: 800 / 3000



136. Clapp-Eastham Co. HZ. 2-tube AF Amplifier Oak Cabinet. No tubes.

Estimate Low/High: 100 / 300



Session #1 - Auction - Terrey Collection of Vintage Radio

137. Clapp-Eastham Co. HRA. Scarce, small, 1-tube AF Amplifier. Cabinet is 5 3/4" high.

Estimate Low/High: 100 / 300



141. Clapp-Eastham Co. C-23. 4-tube receiver. No tubes.

Estimate Low/High: 100 / 300



138. Clapp-Eastham Co. A-3. 2-tube AF Amp. No tubes

Estimate Low/High: 150 / 350



142. Clapp-Eastham Co. C-23. 4-tube receiver. No tubes.

Estimate Low/High: 100 / 300



139. Clapp-Eastham/Wireless MFG Co. (Canton, Ohio) . 2 Tube Amplifier. Similar to Clapp-Eastham A-3. No tiubes.

Estimate Low/High: 100 / 200



143. Clapp-Eastham Co. C-3. 3-tube receiver. No tubes.

Estimate Low/High: 200 / 500



140. Clapp-Eastham Co. A-4. 2-tube AF Amplifier. No tubes.

Estimate Low/High: 150 / 300



144. Clapp-Eastham Co. DD. 3-tube receiver. With (3) Bakelite base tubes, display.

Estimate Low/High: 100 / 300



Session #1 - Auction - Terrey Collection of Vintage Radio

145. Clapp-Eastham Co. Haynes Tuner. 1-tube receiver. No tube.

Estimate Low/High: 150 / 350



© TERREY AUCTION

149. Clapp-Eastham/Westcott LDR. Receiver and amplifier using Clapp-Eastham (?) Cabinets. Similar to Clapp-Eastham R-4/A-5. No tubes.

Estimate Low/High: 100 / 200



© TERREY AUCTION

146. Clapp-Eastham Co. R-3. 1-tube receiver. No tubes.

Estimate Low/High: 100 / 300



© TERREY AUCTION

150. Clapp-Eastham Co. R-4/HHL. R-4 and HHL 2-tube AF Amplifier Single cabinet version. No tubes.

Estimate Low/High: 150 / 400



© TERREY AUCTION

147. Clapp-Eastham Co. R-4. 1-tube receiver. No tubes.

Estimate Low/High: 100 / 300



© TERREY AUCTION

151. Clapp-Eastham Co. Radak Type RHM. Made for R.H. Macy & Co., New York City. 3-Tube set with room for batteries. No tubes.

Estimate Low/High: 150 / 300



© TERREY AUCTION

148. Clapp-Eastham Co. R-4/A-5. 1-tune receiver & 2-tube AF Amplifier Single cabinet version. No tubes.

Estimate Low/High: 150 / 400



© TERREY AUCTION

152. Clapp-Eastham Co. RZ. 3-tube receiver. No tubes.

Estimate Low/High: 200 / 400



© TERREY AUCTION

Session #1 - Auction - Terrey Collection of Vintage Radio

153. Clapp-Eastham Co. Unico Special Receiver. 1-tube receiver. 1 Bakelite tube, filament OK.

Estimate Low/High: 100 / 300



157. Clapp-Eastham Co., Brooklyn, NY Baby Emerson. 1-tube receiver using Emerson multi-valve tube containing 3 triodes in one envelope. Tube replaced with one with a good filament after photo.

Estimate Low/High: 300 / 700



154. Clapp-Eastham Co. Gold star. 5-tube receiver. No tubes.

Estimate Low/High: 100 / 250



158. Emerson Radval Corp. Multivalue Tube (only). Multivalue tube, also called the E.M.V. Three triodes in one envelope! Item includes tube, socket & box. Filament good.

Estimate Low/High: 200 / 600



155. Clapp-Eastham Co. (Homebrew?) SS Variometer Crystal Set. Crystal radio receiving set, Possibly made up using Clapp-Eastham Type SS variometer.

Estimate Low/High: 100 / 250



159. Cleartone Radio Co. Clear-O-Dyne. 4-Tubs set. Nice original set. No tubes.

Estimate Low/High: 180 / 600



156. Clapp-Eastham Co. BQ Wavemeter Y-7042. With (2) coils and crystal detector.

Estimate Low/High: 100 / 300



160. Cleartone Radio Co. Super Clear-O-Dyne. 5-Tube Set. No tubes. Good original condition.

Estimate Low/High: 180 / 600



Session #1 - Auction - Terrey Collection of Vintage Radio

161. Colby Telegraph School Receiving Transformer, one adjuster shaft. Receiving transformer with one adjustable coupled coil. Unusual.

Estimate Low/High: 100 / 350



165. Cutting & Washington 11. With (3) brass based tubes, filament., OK.

Estimate Low/High: 800 / 3000



162. Colby Telegraph School Receiving Transformer, two adjuster shafts. Receiving transformer with two adjustable coupled coils. Unusual. Original tag, Pat, date 8-13. Rare. Good condition.

Estimate Low/High: 100 / 350



166. Cutting & Washington 11A. 3-Tube, double-tuned circuit, regenerative receiver. Model without battery compartment. (3) Bakelite tubes, filament OK.

Estimate Low/High: 200 / 500



163. Colby Telegraph School Five-Tube Receiver. Used the Colby receiving transformer with one adjustable coupled coil. Unusual. 5-Tubes. In original. as-found condition, with original dirt and no cabinet. Wooden base is cracked.

Estimate Low/High: 150 / 500



167. Cutting & Washington 11B. 3-Tube, double-tuned circuit, regenerative receiver. Model with battery compartment inside cabinet. No tubes.

Estimate Low/High: 200 / 500



164. Curtis, Samuel Short Wave Receiver. 1-tube regenerative. By Samuel Curtis, Braintree, Mass. (Boston). 1 Bakelite tube, display.



168. Cutting & Washington 12A. 2-tube, single circuit portable set. Front cover missing, back cover present. No tubes.

Estimate Low/High: 250 / 600



Session #1 - Auction - Terrey Collection of Vintage Radio

169. Cutting & Washington 15. 1-tube receiver. With (1) tube, untested.

Estimate Low/High: 150 / 300



173. Firth, John & Co. Inc. Type 15-B. 3-tubes; 3-stage AF amplifier. No tubes.

Estimate Low/High: 200 / 600



170. Cutting & Washington Teledyne. 4-Tubes (UV-199), double-circuit regenerative receiver with 2-stages AF amplification, plus a tube ahead of detector to reduce radiation. No tubes.

Estimate Low/High: 150 / 300



174. Firth, John & Co. Inc. Type 35-A Crystal Set. Single circuit set.

Estimate Low/High: 300 / 600



171. Deutsche Telephonwerks U Kabelindustrie Loop Antenna. Folding. Open size about 38" high by 38" wide.

Estimate Low/High: 150 / 400



175. Firth, John & Co. Inc. Type 35-B Crystal Set. Two circuit set.

Estimate Low/High: 300 / 600



172. Electro Importing Interstate Crystal Set. Rare. With E.I. single headphone. Detector missing cat whisker and coil missing slide contacts/springs. "E.I." in the Bakelite on phone and top of coil.

Estimate Low/High: 300 / 900



176. Firth, John & Co. Inc. Type 36-A. 1-tube detector unit. With brass base display tube.

Estimate Low/High: 250 / 600



Session #1 - Auction - Terrey Collection of Vintage Radio

177. Firth, John & Co. Inc. Type 38-A. 3-tubes, Detector, 2-stage AF Amplifier. With (3) Bakelite base tubes, filaments OK.

Estimate Low/High: 250 / 600



181. Firth, John & Co. Inc. Model A Vocaphone Type 235-B. 5-tubes, Detector, 2-stage AF Amplifier, horn speaker. With 5 brass based display tubes.

Estimate Low/High: 800 / 3000



178. Firth, John & Co. Inc. Type 40-A. 2-tube AF amplifier. No tubes.

Estimate Low/High: 100 / 600



182. Firth, John & Co. Inc. Vocaphone Type Lloyd Wireless Telephone Corp.. 4-tubes. Similar to 235-A and 235-B. Fair condition. No tubes. Cabinet is fair.

Estimate Low/High: 600 / 3000



179. Firth, John & Co. Inc. Vocatone Type 230-A. 3-tubes, Detector, 2-stage AF amplifier. Cabinet finish is flawed in several places. No tubes.

Estimate Low/High: 600 / 1500



183. Firth, John & Co. Inc. Vocaphone Type 41-A Portable Receiver. 1-tube portable receiver in box with lid, including Firth headphones. With (1) brass base tipped tube, filament OK. Includes handle.

Estimate Low/High: 600 / 2500



180. Firth, John & Co. Inc. Model A Vocaphone Type 235-A. 3-tubes; Detector, 2-stage AF Amplifier, horn speaker. No tubes.

Estimate Low/High: 1000 / 3000



184. Firth, John & Co. Inc. Vocaloud Type 1. Horn speaker in cabinet. Model without loud-soft adjuster. Driver OK.

Estimate Low/High: 500 / 1200



Session #1 - Auction - Terrey Collection of Vintage Radio

185. Firth, John & Co. Inc. Vocaloud Type 1. Horn speaker in cabinet. Model with loud-soft adjuster. Driver OK (clicks).

189. No Lot .

Estimate Low/High: 500 / 1200



186. Firth, John & Co. Inc. Vocaloud Laboratory Model. Horn speaker on laboratory stand. Driver OK. Faint Clicking when tested with a D battery. Laboratory stand is marked Firth!

Estimate Low/High: 500 / 1500



190. Gale Radio Laboratories The Town Cryer. Ceramic. Small chip on right-upper edge. Driver OK. Has tag.

Estimate Low/High: 200 / 400



187. Firth, John & Co. Inc. Type L Long Wavemeter. Long wavemeter, range 1500 to 20000 meters. Glass meter face cracked.

Estimate Low/High: 180 / 500



191. Gemco Model 20 Pedestal Speaker. Cone speaker. Driver OK. WINNING BIDDER MUST ARRANGE FOR PICKUP!

Estimate Low/High: 200 / 600



188. Firth, John & Co. Inc. Type LG-11 Capacity Bridge. Missing leather handle. With single headphone.

Estimate Low/High: 125 / 300



192. GGH Majestic 45 with White Pyralin Horn Speaker. Horn speaker, 12" diameter. Driver or cord open.

Estimate Low/High: 300 / 1000



Session #1 - Auction - Terrey Collection of Vintage Radio

193. Gilbert, A.C. Crystal Set with original detector.. With blueprint instructions in lid.

Estimate Low/High: 180 / 600



197. Gilbert, A.C. Transmitter/Receiver & Tele Set. Two items: (1) A buzzer wireless transmitter and a crystal detector receiver demonstration outfit. (2) A pair of telegraph keys with buzzers.

Estimate Low/High: 100 / 300



194. Gilbert, A.C. Crystal Set with fixed detector. With 2-color label in lid (repro?)

Estimate Low/High: 80 / 200



198. Girton Company, T.C. Ericnella Crystal Set. Very good, original condition. With original box with nice graphic on lid.

Estimate Low/High: 100 / 300



195. Gilbert, A.C. 1-Tube unit. 1 brass based, tipped display tube, filament OK. Similar to the Adams Morgan VT Control.

Estimate Low/High: 100 / 250



199. Globe Earphone Co. Horn speaker. Black speaker on stand with three cells. Driver or cord open. See photos for details.

Estimate Low/High: 100 / 300



196. Gilbert, A.C. 1-Tube Receiver.. Uses loose coupler and (2) variable condensers. With (1) brass base tipped tube. Filament OK. Fair to good condition, see photos.

Estimate Low/High: 300 / 700



200. Hartman Pedestal Horn Speaker. Very good original condition. Driver OK. WINNING BIDDER MUST ARRANGE FOR PICKUP!

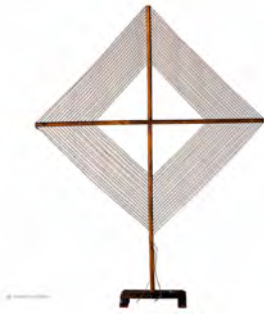
Estimate Low/High: 200 / 600



Session #1 - Auction - Terrey Collection of Vintage Radio

201. Homebrew Loop Antenna. Simple, homemade loop antenna, about 32" tall, 24" across.

Estimate Low/High: 50 / 100



205. King Am-Pli-Tone Speaker - Headphone Type. 6 3/4" bell, 14 1/2" tall.

Estimate Low/High: 100 / 350



202. Homebrew Zinc Printing Plate Radio Cabinet. 3-Piece homebrew set with cabinet made from used zinc newspaper printing plates. Elaborate etching design on front of each piece. Tubes untested.

Estimate Low/High: 100 / 300



206. King Superpone Horn Speaker - Headphone Type. 7 1/2" bell, 17 1/2" tall. About 4" taller than the more common Am-Pli-Tone.

Estimate Low/High: 100 / 500



203. Hunt & McCree Crystal Set. Nice, rare item. Detector needs attention. With original box and instructions.

Estimate Low/High: 300 / 800



207. Bug Crystal Set Lady Bug. Plastic shell. Crystal adjusted moving bug feelers.

Estimate Low/High: 80 / 150



204. John Hugo Mfg. Co. Radio Rex. Metal roof and plastic dog with decorative box lid.

Estimate Low/High: 100 / 300



208. Little Gem by U.S. Co. Inc. Crystal Set. On tripod.

Estimate Low/High: 200 / 400



Session #1 - Auction - Terrey Collection of Vintage Radio

209. Loewe Radio Model OE333 Multi-Valve set. Uses 3NF multivalve tube, display. Original.

Estimate Low/High: 200 / 600



213. Magnavox Co. Type AC2-C. 2-Tube Audio Frequency Amplifier. With (2) Bakelite display tubes. Finish on cabinet crazed.

Estimate Low/High: 200 / 600



210. Maclite Radio Co. Model B. 1-Tube Receiver. With (1) Bakelite base tube, filament OK.

Estimate Low/High: 100 / 300



214. Magnavox Co. AC3-C. Audio Frequency Amplifier. With 3 Bakelite base display tubes.

Estimate Low/High: 300 / 800



211. Magnavox Co. A1-A. Audio Frequency Amplifier. 1-tube. With (1) brass base, tipped display tube.

Estimate Low/High: 200 / 600



215. Magnavox Co. Type AC3-P. 6-tube audio amplifier. Has Edison Institute tag inventory No. R-1091. 2 Panel screws (included) do not line up. With 6 WE-216A tubes, (4) filament OK.

Estimate Low/High: 1000 / 3000



212. Magnavox Co. AT2-E Amplivox Amplifier. 2-Tube amp. With (2) Bakelite display tubes.

Estimate Low/High: 300 / 600



216. Magnavox Co. Type A1R-A. Horn speaker with 1-tube amplifier. Has original Magnavox tube, filament OK. Note: The "chunks" out of the tube in photos are the result of photo processing. 14" bell.

Estimate Low/High: 400 / 800



Session #1 - Auction - Terrey Collection of Vintage Radio

217. Magnavox Co. A2R-A. 2-Tube AF Amplifier & Horn. 2 brass based, tipped tubes, filament OK. 14" bell.

Estimate Low/High: 300 / 800



221. Magnavox Co. R3-A. Horn Speaker. Good input and field continuity. Straight neck, 8" bell.

Estimate Low/High: 200 / 400



218. Magnavox Co. Type TP1-A Horn Speaker. RARE! Large horn speaker mounted on heavy battery box. Unable to test driver. See photos. Uses (10) No. 6 dry cells, included. "Heavy." 18" bell.

Estimate Low/High: 400 / 1200



222. Magnavox Co. R3-B. Horn speaker. Good input and field continuity. 14" bell.

Estimate Low/High: 200 / 400



219. Magnavox Co. Amplivox Type CA2-F. Very scarce, cabinet model, enclosing a 2-tube amp and a horn speaker, 14" bell. With (2) display 01As. See photos.

Estimate Low/High: 500 / 2000



223. Magnavox Co. R3-B. Open input and field. 14" bell.

Estimate Low/High: 100 / 350



220. Magnavox Co. R2-C. Horn speaker. Input transformer missing, field open. 18" bell. Has soft/loud adjuster on driver.

Estimate Low/High: 100 / 400



224. Magnavox Co. R3-D. Horn speaker. 2 screws securing bell are missing. Good input and field continuity. Minor light scratch on lower rear of horn as seen in photos. 18" bell.

Estimate Low/High: 300 / 600



Session #1 - Auction - Terrey Collection of Vintage Radio

225. Magnavox Co. Type R3-A. Horn speaker. Input and field continuity OK. 14" bell.

Estimate Low/High: 200 / 400



229. Manhattan OPT Co. Gundlach Crystal set (Larger model). Double slider crystal set.

Estimate Low/High: 150 / 300



226. Magnavox Co. Type M-4. Horn speaker. No cord, driver condition unknown, Bell slightly flattened at top as seen in photos. Condition fair. 11" bell.

Estimate Low/High: 100 / 250



230. Manhattan OPT Co. Gundlach Crystal set (smaller model). Double slider crystal set.

Estimate Low/High: 150 / 300



227. Magnavox Co. Model D Deluxe Receiver. 4-tube receiver in slide-out drawer. Behind doors. With (4) Bakelite tubes, filament OK.

Estimate Low/High: 100 / 300



231. Martian Martian Big 4. Good original condition.

Estimate Low/High: 300 / 600



228. Magnavox Co. MC2-A. Telemegaphone control box. A scarce Magnavox accessory.

Estimate Low/High: 100 / 300



232. Martian Special Crystal set. On tripod. Good original condition.

Estimate Low/High: 100 / 300



Session #1 - Auction - Terrey Collection of Vintage Radio

233. Mu-Rad Laboratories Inc. MA-13. Broadcast Receiver. With (6) Bakelite based display tubes. Inside nice with inspection tag! Cabinet fair.

Estimate Low/High: 100 / 300



237. Neutrowound Radio Mfg. Co. (Advance Automobile Accesories Co.) Model C-6. 6-tubes. Black with six filament rheostats. 6 Bakelite tubes, filament okay.

Estimate Low/High: 500 / 900



234. Mu-Rad Laboratories Inc. MA-15. 6-Tube TRF. With (6) Bakelite base display tubes.

Estimate Low/High: 100 / 400



238. Neutrowound Radio Mfg. Co. (Advance Automobile Accesories Co.) Super Six 1926 Model. 6-tubes. Black with three filament rheostats.

Estimate Low/High: 500 / 900



235. Mu-Rad Laboratories Inc. Triplex receiver. No tubes

Estimate Low/High: 100 / 300



239. Neutrowound Radio Mfg. Co. (Advance Automobile Accesories Co.) 1927 Model (Blue). 6-tubes. Blue with three filament rheostats. Could not remove some of the tube covers. Tubes untested. Very nice paint.

Estimate Low/High: 600 / 1200



236. Mu-Rad Laboratories Inc. R-12. Rejector unit.

Estimate Low/High: 60 / 200



240. Neutrowound Radio Mfg. Co. (Advance Automobile Accesories Co.) 1928 Model (Red). 6-tubes. Red with three filament rheostats. 6 Bakelite tubes, filament OK. Paint fair to good. Unfortunately, clear tape was put over bottom label

Estimate Low/High: 500 / 1200





Neutrowounds, Lots: 237, 238, 239, 240



Lot 103: RCA 3D Stand-up Display, several layers of performers.

Session #1 - Auction - Terrey Collection of Vintage Radio

241. Parkin Crystal set. Small knob on the front adjusts crystal detector inside. See photo. (Sorry... photo is sideways.)

Estimate Low/High: 100 / 200



245. Penna. Wireless 1-tube receiver. Front panel is engraved with "WCAE." WCAE, a Pittsburgh station, went on the air in 1922. Perhaps questionable, but cabinet and inside is same construction as other Penna. sets.

Estimate Low/High: 150 / 350



242. Pathe Cone Speaker - Illuminated Version. 18 1/2" cone speaker. small tear in cone. Driver OK. With light bulb, untested.

Estimate Low/High: 300 / 600



246. No Lot .

243. Penna. Wireless GT-3. 4-tube receiver. With (4) Bakelite base tubes, untested. (Back of cabinet will not stay shut.)

Estimate Low/High: 150 / 400



247. Pittsburgh Radio Supply House SP2. 3-Rheostat version. With extra amp inside and locking pin. With (4) Bakelite tubes, filaments OK.

Estimate Low/High: 200 / 600



244. Penna. Wireless GT-2. 3-Tube receiver. With (3) brass based tubes, filaments OK.

Estimate Low/High: 150 / 300



248. Pittsburgh Radio Supply House SP2. 1-Rheostat version. With extra amp inside and locking pin. With (4) Bakelite tubes, filaments OK.

Estimate Low/High: 200 / 600



Session #1 - Auction - Terrey Collection of Vintage Radio

249. Pratt Tuning Aerial (loop antenna). Complex of three rotating loops. About 24" high and 17" diameter. Photos tell the story!

Estimate Low/High: 400 / 1200



253. RCA (Westinghouse) Aeriola Sr. Receiver Type RF. 1 tube receiver. With (1) WD-11 tube (display).

Estimate Low/High: 150 / 450



250. RCA (Westinghouse) Aeriola Jr.. With inspection tag. Good detector.

Estimate Low/High: 300 / 700



254. RCA (Westinghouse) Radiola Sr. RF.. 1 tube regenerative receiver. With (1) WD-11 diplay tube.

Estimate Low/High: 150 / 450



251. RCA (Westinghouse) Aeriola Jr. with Original Box (2 items). With box and WD-11 brass based tube (display). Box in fair condition.

Estimate Low/High: 300 / 800



255. RCA (Westinghouse) Radiola AC.. 2 stage audio amplifier from Muchow Museum. No tubes.

Estimate Low/High: 150 / 400



252. RCA (Westinghouse) Aeriola Sr. Amplifier Type AC.. 2 tube amplifier. With (2) brass base, tipped display tubes.

Estimate Low/High: 150 / 400



256. RCA (Westinghouse) Radiola RS. Regenerative receiver and amplifier. No tubes.

Estimate Low/High: 150 / 500



Session #1 - Auction - Terrey Collection of Vintage Radio

257. RCA (Westinghouse) RA. Short-Wave tuner. Later model: note Bakelite knob.

Estimate Low/High: 100 / 250



261. RCA (Westinghouse) DA. 3-tube; detector, 2-step AF amplifier.

Estimate Low/High: 100 / 250



258. RCA (Westinghouse) RA. Short-Wave tuner. Earlier model: note metal dial. Panel is spotted, see photos.

Estimate Low/High: 100 / 300



262. RCA (Westinghouse) DA. 3-tube; detector, 2-step AF amplifier. Earlier model. Tube shock mounts bad.

Estimate Low/High: 100 / 300



259. RCA (Westinghouse) RA. Short-Wave tuner. Early Version. SN: 7558

Estimate Low/High: 100 / 300



263. RCA (Westinghouse) DA 3-tube. 3-tube; detector, 2-step AF amplifier. Early Version. SN: 1725.

Estimate Low/High: 100 / 300



260. RCA (Westinghouse) RA - Pittsburgh Model. Short-Wave tuner. Manufactured in Pittsburgh, PA Very early version. SN: 189. Panel is a bit mottled, see photos.

Estimate Low/High: 100 / 400



264. No Lot .

Session #1 - Auction - Terrey Collection of Vintage Radio

265. RCA (Westinghouse) CB loading coil. For an RA and RC receiver. With box.

Estimate Low/High: 80 / 200



269. RCA (Westinghouse) Rebroadcast Receiver. Scarce Receiver and 4-tube AF amp. Used to rebroadcast another station's signal. Receiver tube panel loose. With (7) brass based tipped tubes, (3) filaments OK.

Estimate Low/High: 3000 / 6000



266. RCA (Westinghouse) RT. Antenna tuner. Scarce RCA item.

Estimate Low/High: 800 / 2000



270. RCA Radiola AG-814 Loop Antenna. Cylindrical shaped loop antenna. About 23" high, 17" diameter.

Estimate Low/High: 100 / 250



267. RCA (Westinghouse) AR. 3-stage, untuned RF amplifier. Scarce RCA item!

Estimate Low/High: 800 / 2000



271. RCA (General Electric Co.) ER-753. Crystal set, often called "the wedge". Rare.

Estimate Low/High: 300 / 800



268. RCA (Westinghouse) DR - Detector Amplifier. Rare resistance-coupled "DA". No tubes.

Estimate Low/High: 600 / 1800



272. RCA/World Wide Wireless Radiola I - ER-753A. Nice condition, except missing coil cover inside cabinet.

Estimate Low/High: 250 / 700





The scarce RCA Radiolas RT Antenna Tuner, AR R.F. Amplifier & DR Resistance-Coupled Detector/Amplifier, Lots 266, 267 & 268



Lot 219: The Unusual Magnavox Amplifier, Horn Speaker Combo in a Cabinet.

Session #1 - Auction - Terrey Collection of Vintage Radio

273. RCA Radiola II (AR-800). 2-tube portable with headphones. With (2) display tubes.

Estimate Low/High: 150 / 450



277. RCA (General Electric Co.) Radiola VI. AA1520 3-stage RF amp. and the AA1400 det/2-step AF amp. combination. Used the AG1380 loop antenna. With 6 brass based tubes, 3 okay, 3 display. With top (possibly a reproduction)
Estimate Low/High: 200 / 500



274. RCA Radiola III, With Original Box. Sipping box includes a boxed Radiola III, two boxed Brandes head phones and two boxed WD-11 (display) tubes. Serial numbers do not match and Radiola III has been used.
Estimate Low/High: 100 / 400



278. RCA Radiola VII. 5-tube receiver. No tubes. Includes reproduction battery brackets. (included in envelope).

Estimate Low/High: 800 / 3000



275. RCA Radiola IV. Self-contained in cabinet with batteries and speaker in cabinet. 3-tube set. With (3) Bakelite based tubes, filaments OK.

Estimate Low/High: 300 / 800



279. RCA Radiola VIIB. 5-tube receiver in table crank-phonograph-style cabinet. Tube shock mount loose, tubes untested.

Estimate Low/High: 800 / 3000



276. RCA (General Electric Co.) Radiola V. The AR1300 crystal set and the AA1400 detector/2-step AF amplifier combination. With top. Crystal detector believed to be original.

Estimate Low/High: 200 / 500



280. RCA Radiola Super VIII Console Radio. With (6) 199 tubes, untested. With ARCA 1990 Convention 1st place ribbon. WINNING BIDDER MUST ARRANGE FOR PICKUP.

Estimate Low/High: 300 / 600



Session #1 - Auction - Terrey Collection of Vintage Radio

281. RCA Radiola IX. Sonoran Radio/Phonograph Combination. 5-tube receiver panel. Tubes untested. See photos. WINNING BIDDER MUST ARRANGE FOR PICKUP.

Estimate Low/High: 400 / 1500



285. RCA Radiola Regenoflex. 4-tube receiver. With (4) Bakelite base WD-11s, filaments OK.

Estimate Low/High: 150 / 300



282. RCA Radiola X. 4-Tube receiver. With (4) Bakelite base WD-11, filament OK.

Estimate Low/High: 250 / 550



286. RCA Radiola 20 - Floor Model. Uncommon Radiola 20 version. With nice label in lid and (5) UX-199s, filament good. See "Radio Manufacturers of the 1920s," page 43. WINNING BIDDER MUST ARRANGE FOR PICKUP.

Estimate Low/High: 100 / 300



283. RCA (General Electric Co.) Radiola Grand on RCA Floor Cabinet. 4-tube receiver panel. With UX-199 display tubes in WD-11 adapters. Cabinet is hard to find. WINNING BIDDER MUST ARRANGE FOR PICKUP!

Estimate Low/High: 500 / 1300



287. RCA Radiola 24 (Portable Super Heterodyne). With (6) 199 Bakelite tubes, filaments OK. With repro owners manual.

Estimate Low/High: 500 / 1200



284. RCA Super-Heterodyne. 6-tube receiver with warranty tag. With (6) 199s, filaments OK. Includes tuner rings.

Estimate Low/High: 140 / 300



288. RCA Radiola 26 Portable. With (6) untested 199 tubes. With A and C batteries. Includes rare battery box.

Estimate Low/High: 300 / 900



Session #1 - Auction - Terrey Collection of Vintage Radio

289. RCA Radiola UZ-1325 Horn Speaker. Driver OK.

Estimate Low/High: 80 / 200



293. RCA HG-1380 Loop Antenna. Large folding, loop antenna with UC-1820 Faradon variable capacitor. When open, 58" tall by 51 1/2" wide.

Estimate Low/High: 500 / 1000



290. RCA Radiola UZ-1320 Horn Speaker. Driver or cord open.

Estimate Low/High: 100 / 400



294. RCA TF Transmitter. 20 Watt Transmitter, Phone & Telegraph. Price in 1922 was \$305. Includes (4) good UV-202 brass based, tipped tubes.

Estimate Low/High: 1500 / 6000



291. RCA Radiola FH Horn Speaker. Scarce. Driver OK.

Estimate Low/High: 100 / 300



295. RCA ET-3619 20W Transmitter & ET-3620 Rectifier. 2 pieces. ET-3619 uses (4) UV-202. ET-3620 uses (4) UV-216. With (4) brass based, tipped UV-202, (2) UV-216 and (2) Type 10 tubes (included for display.) Has been restored.

Estimate Low/High: 1800 / 7000



292. RCA (General Electric Co.) 1 tube panel/amp. Breadboard style, 1-tube audio amplifier with 2 transformers and rheostat. 1 brass based tube, display. 2 RCA transformers (UV-712). "Never seen before."

Estimate Low/High: 200 / 600



296. RCA Theremin & 106 speaker. Very good condition, good tubes. Invented by Leon Theremin in the 1920s. "An absolutely new unique musical instrument anyone can play." WINNING BIDDER MUST ARRANGE FOR PICKUP!

Estimate Low/High: 6000 / 12000



Session #1 - Auction - Terrey Collection of Vintage Radio

297. RCA Photo, framed, Radiola V. Father and son listening to a Radiola V using headsets. Color.

Estimate Low/High: 50 / 100



301. Ritchie & Sons, E.S. CRB-2. 3 tube receiver. With (3) Bakelite tubes, filament OK.

Estimate Low/High: 200 / 500



298. RCA (Westinghouse) Photo, Framed of RC (RADA). 27" wide by 23 1/2" high. B/W.

Estimate Low/High: 100 / 300



302. Ritchie & Sons, E.S. Tuner.

Estimate Low/High: 100 / 300



299. RCA (Westinghouse) Red Banner. "New Westinghouse Radios Are Here". Canvas painted banner, red. Double sided. 34" wide by 45" long.

Estimate Low/High: 60 / 150



303. Ritchie & Sons, E.S. Crystal detector.

Estimate Low/High: 100 / 200



300. Ritchie & Sons, E.S. Type CA-1. Serial number 91.

Estimate Low/High: 200 / 500



304. Saal Pedestal Horn Speaker. Driver or cord open. WINNING BIDDER MUST ARRANGE FOR PICKUP!

Estimate Low/High: 200 / 600



Session #1 - Auction - Terrey Collection of Vintage Radio

305. Sadler Horn Speaker - Headphone Type. Very good original condition.

Estimate Low/High: 100 / 300



309. Tower Castle Cone Speaker. Cone is warped and pulled away from upper frame. Open measured through cord. Metal work is OK.

Estimate Low/High: 100 / 300



306. Standard Radio Multivalve. Set uses the Emerson Multivalve tube. With display tube.

Estimate Low/High: 100 / 300



310. Tuska Co., C.D. Type 220. Regenerative tuner; Primary series condenser, secondary tuning condenser, plate variometer for regeneration.

Estimate Low/High: 150 / 450



307. Standard Radio & Electric Co. Giblin Radioear Loop Antenna. 54 3/4" tall by 24 3/4" wide.

Estimate Low/High: 200 / 600



311. Tuska Co., C.D. Type 222, late. 1 Brass based tube, filament OK.

Estimate Low/High: 200 / 500



308. Tower Adventurer - Ship Cone Speaker. Cone is warped. Driver OK. Metal work is OK.

Estimate Low/High: 150 / 350



312. Tuska Co., C.D. Type 224. 1-tube regenerative receiver. 1 Bakelite tube, filament OK.

Estimate Low/High: 150 / 350



Session #1 - Auction - Terrey Collection of Vintage Radio

313. Tuska Co., C.D. Type 225. 2-panel version. 1-tube regenerative receiver (Type 224) and 2-stage AF amplifier (Type 226) in one cabinet. 3 Bakelite display tubes.

Estimate Low/High: 250 / 600



TERREY AUCTION

317. Tuska Co., C.D. Type 228 Superdyne. 4-tubes. RF amplifier, detector, 2-stage AF amplifier. No tubes.

Estimate Low/High: 200 / 500



TERREY AUCTION

314. Tuska Co., C.D. Type 225. 1-panel version. 1-tube regenerative receiver (Type 224) and 2-stage AF amplifier (Type 226). 3 Bakelite tubes, filament OK.

Estimate Low/High: 150 / 400



TERREY AUCTION

318. Tuska Co., C.D. Type 300. 3-Tube receiver. No Tubes.

Estimate Low/High: 150 / 400



TERREY AUCTION

315. Tuska Co., C.D. Type 226. 2-tube AF amplifier. 2 Bakelite tubes, filament OK. Lid is a bit warped

Estimate Low/High: 150 / 450



TERREY AUCTION

319. Tuska Co., C.D. Type 300 Deluxe. Extended cabinet. 3 brass based tubes, 2 with good filament, 1 display.

Estimate Low/High: 150 / 400



TERREY AUCTION

316. Tuska Co., C.D. Type 227. Regenerative 3-circuit tuner; Detector & 2-stage AF amplifier. 3 Bakelite display tubes.

Estimate Low/High: 150 / 450



TERREY AUCTION

320. Tuska Co., C.D. Type 301 Superdyne Junior. 3-tube receiver. Detector, 2-stage AF amplifier. 3 Bakelite tubes, filament OK. Spot on top of cabinet is not as bad as it looks in the photo.

Estimate Low/High: 100 / 350



TERREY AUCTION

Session #1 - Auction - Terrey Collection of Vintage Radio

321. Tuska Co., C.D. Superdyne junior. With (3) Bakelite display tubes. (Note: vertical mark on panel is a reflection.)

Estimate Low/High: 100 / 300



325. Unknown Mfg. Horn Speaker - Headphone Type. Unusual. With (2) separate single headphones enclosed in base. Open cord or driver.

Estimate Low/High: 100 / 300



322. Tuska Co., C.D. Type 305 Superdyne. 4-tube receiver. RF amplifier, detector, 2-stage AF amplifier. 4 Bakelite tubes, filament OK.

Estimate Low/High: 100 / 300



326. Unknown Mfg. Pedestal Horn Speaker table. Ornate pedestal horn speaker table. Open cord or driver. See photo. WINNING BIDDER MUST ARRANGE FOR PICKUP!

Estimate Low/High: 200 / 600



323. Unknown Mfg. (Thompson?) Loop Antenna. Loop antenna, rotating. About 26 1/2" high, 10 1/2" wide loop.

Estimate Low/High: 80 / 150



327. Vogue Cone Speaker. Ornate 19 1/2" cone speaker. Good driver.

Estimate Low/High: 100 / 300



324. Unknown Mfg. Loop Antenna, Tall. Tall folding loop antenna, When open, 66 3/4" tall by 15" wide. Condition fair.

Estimate Low/High: 100 / 200



328. Wilson Utensil Co. (Dayton, Ohio) Moon Horn Speaker - Headphone Type. Metal in good original condition.

Estimate Low/High: 250 / 600



Session #1 - Auction - Terrey Collection of Vintage Radio

329. Zenith Companion Portable. Very scarce. 6-tube receiver. Tubes untested.

Estimate Low/High: 2500 / 6000



333. Zenith 2M. 2 Bakelite display tubes.

Estimate Low/High: 300 / 600



330. Zenith-Like - Westburr Six. Six tube suitcase portable set similar to the Zenith Companion. Includes (6) 199 tubes (display).

Estimate Low/High: 200 / 800



334. Zenith 3M. Scarce 3-tube AF amplifier. No tubes.

Estimate Low/High: 300 / 900



331. Zenith 1R. 4-Tube, w/peep hole. Pot metal gears bad. (Reproduction gears included.) With 22.5 volt battery and brackets included. No tubes.

Estimate Low/High: 300 / 800



335. Zenith 3R (late). 4 Bakelite base tubes, filaments OK.

Estimate Low/High: 250 / 500



332. Zenith 2M. 2-Tube AF Amplifier. No tubes.

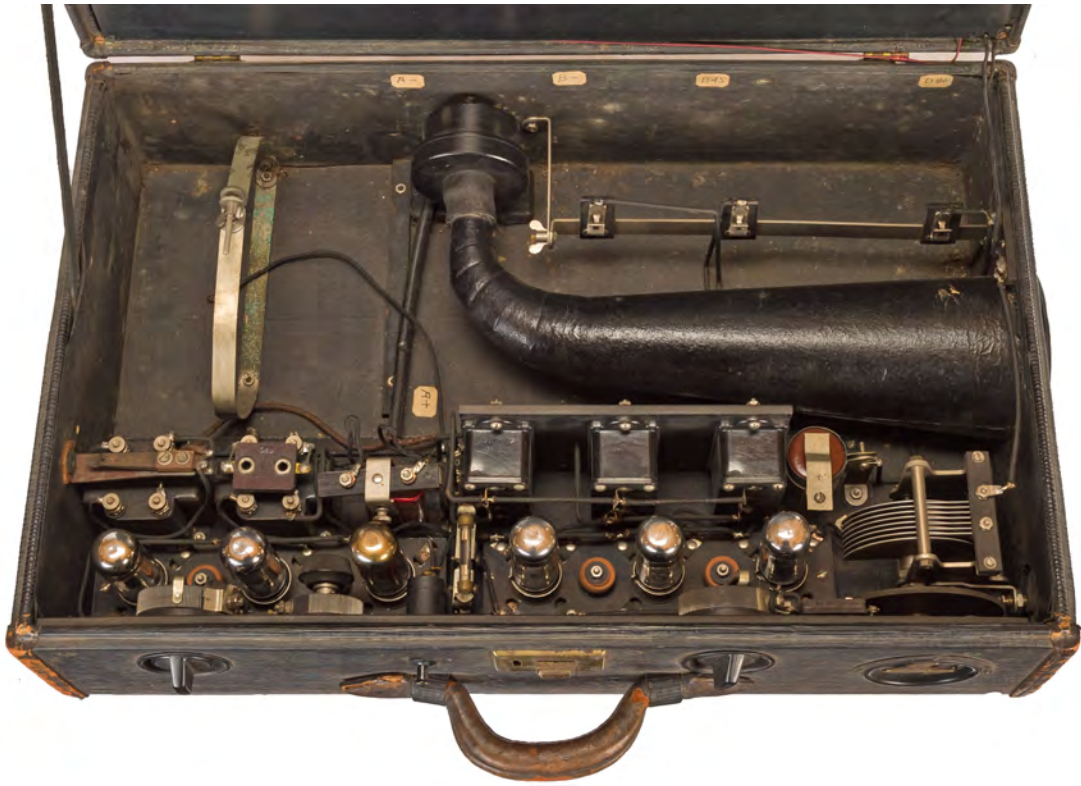
Estimate Low/High: 300 / 600



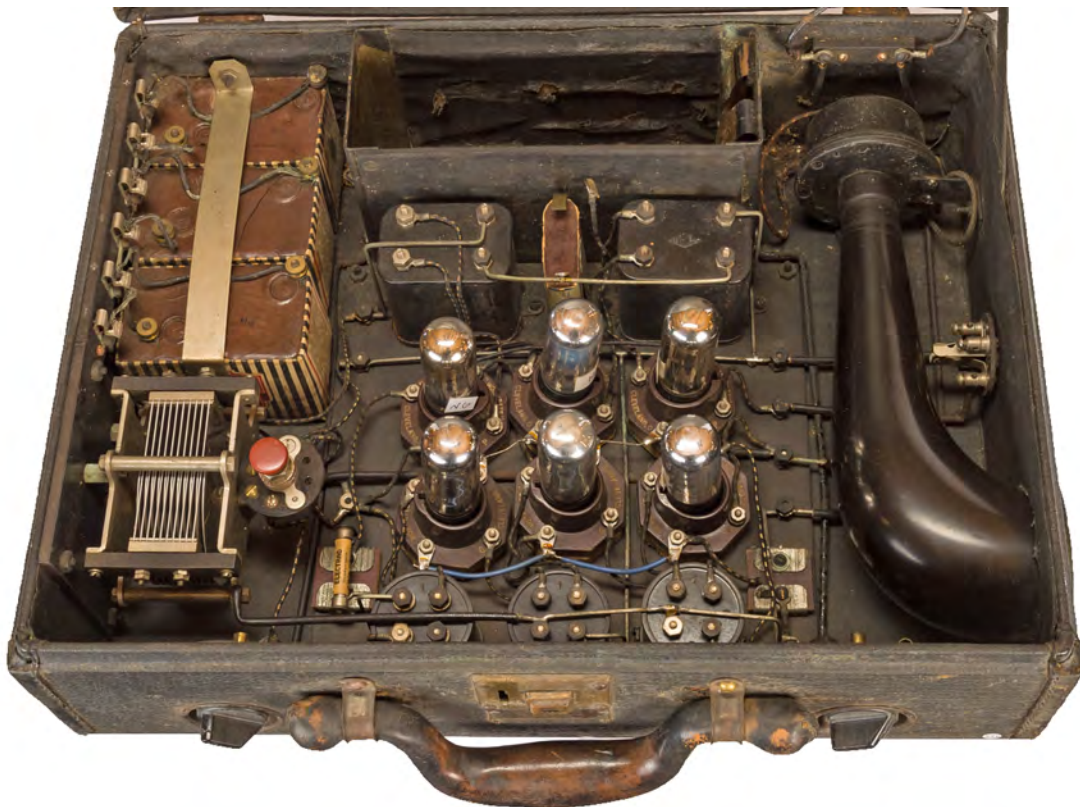
336. Zenith 4R (Early). 4-Tube, w/peep hole. No tubes.

Estimate Low/High: 200 / 500





Lot: 329: Zenith Companion Portable.



Lot 330: Westbur Portable. Note similarity to the Zenith Companion above!

Session #1 - Auction - Terrey Collection of Vintage Radio

337. Zenith 4R (Late). 4-Tube set. No tubes.

Estimate Low/High: 200 / 600



338. Zenith Tuner/Eliminator. A wave trap/filter to reject strong stations at the input for better performance of early Zenith receivers.

Estimate Low/High: 600 / 1500





Lot 207. Lady Bug Crystal Set.



Lot 116. Brush Bug Crystal Set.



110. Atwater Kent Sign, Illuminated, Glass with Base.



Chicago Radio Labs. PAR tuner & AGN2 detector/amplifier, Lots 124 & 125.



Lot 296: RCA Theremin & 106 Speaker