

# A New Zealand QRP Adventure

**Kai Siwiak, ZL/KE4PT**  
**Dec 2014, Wellington,**  
**New Zealand**






# New Zealand is on the Underside of Earth 8,135 miles from Florida (took some getting used to the gravity there)



Image by Chris Dean, KD7CNJ

# Why I was in New Zealand

- Visited daughter Diana Siwiak, ZL/KE4QXL
- Reached out to ZL Ham Radio community
  - John Yaldwyn, ZL4JY, kindly responded
  - Invited me to visit  and present my “play” and “work” technical activities
- Brought along a small HF station
- Allocated a few hours on 2 days for ZL/KE4PT operation, targeting Florida

# Diana Siwiak, ZL/KE4QXL

Ph.D. Candidate in Sonic Arts



SONIC ENGINEERING LAB  
FOR CREATIVE TECHNOLOGY



NEW ZEALAND  
SCHOOL OF MUSIC



# Searched for Portable Ham Radio Sites...





**Searched High...**





Searched Low...

**TSUNAMI INFORMATION: OWHIRO BAY**



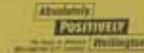
When an earthquake that's strong enough is nearby or nearby, the water in Owhiro Bay, pushing back to high ground and the beach, can flood and spray the road and the beach. This can be dangerous for people and animals. It can also damage the road and the beach. It can also damage the road and the beach. It can also damage the road and the beach.



**Known hazards in this area include**

-  Falling rocks
-  Steep cliffs / Falls
-  Large waves
-  Seals
-  Vehicle / Pedestrian shared access
-  Extreme weather conditions
-  Beach driving required

FOR MORE INFORMATION  
Wellington 0411 277  
Phone 080 9434



**Gates locked Sundays 9am-6pm  
No vehicle access permitted.**



Consulted a Wizard...



## The Weta Group story

On Wellington's Miramar Peninsula, a leafy suburb has been quietly transformed into a creative hub for some of the world's most respected movie businesses.

design & manufacturing), Weta Digital and Production (post-production production), Stone Street Studios (with live music equipment), the to-end capability and resources

From their origins as a place of fancy are the men and how grand, can be realized towards and craftspersons of the international movie Zealand.

Founders and their evolution being industry leaders is a and creative vision.

**CAVE**  
ENJOY A "BEHIND THE SCENES" GLIMPSE INTO WETA WORKSHOP!  
Book online or call 04 476 1477 (toll free)



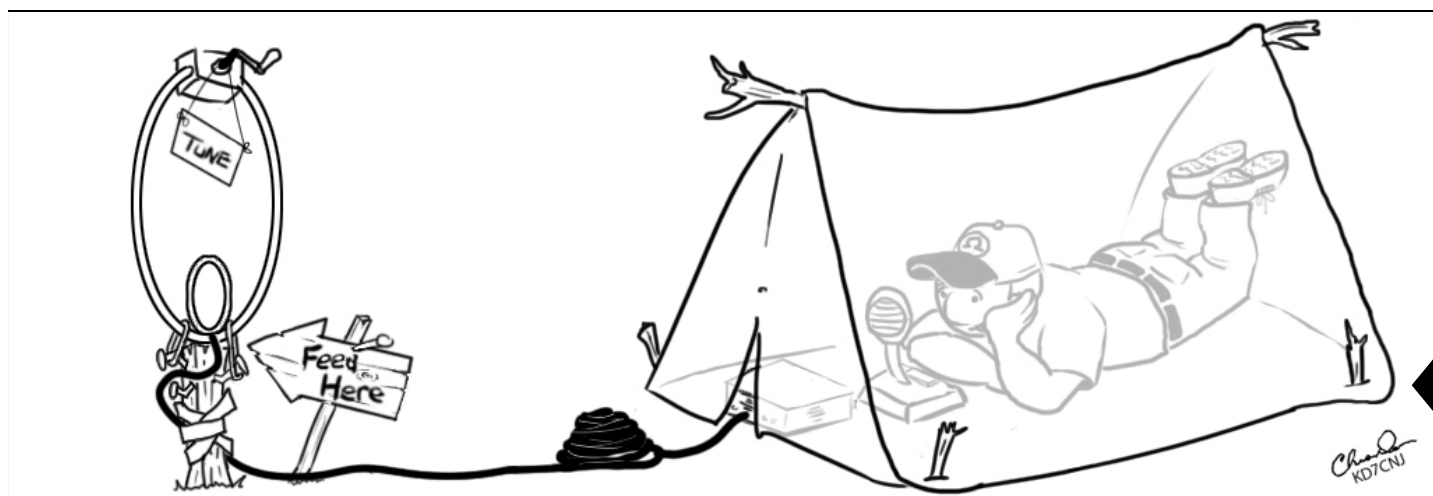
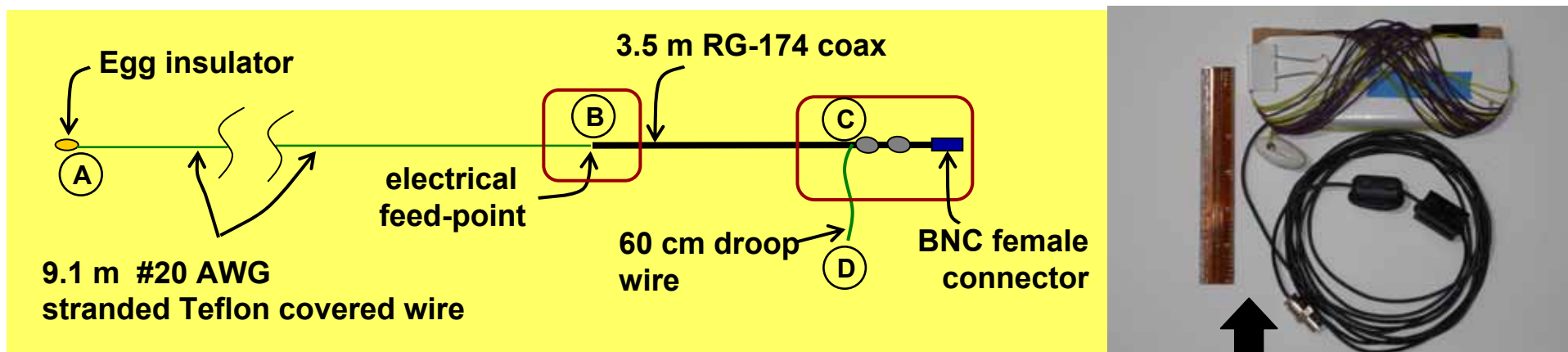
# Portable DX-Go-Bag Station

- DX-Go-Bag
  - 5 W HF/VHF/UHF transceiver
  - Morse key
  - portable loop and OCEF dipole antennas
  - audio sound card interface
  - small laptop computer
- Phone, CW, and digital modes
- Fits in small, airport-security-friendly, backpack





# “Dx-Go-Bag” Antennas



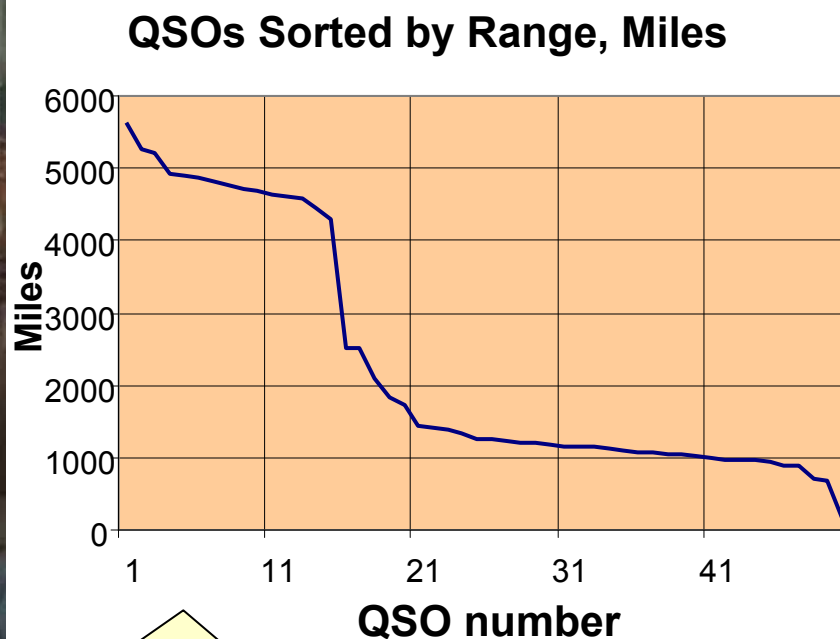
**KE4PT OCEF  
Dipole 7–54 MHz**

**1m Diameter  
7–30 MHz  
Loop**

Image by Chris Dean, KD7CNU, Master's student, CS for Film Graphics, Victoria University



# Preparing in FL for the Trip



Initial tests from inside my living room in Coral Springs, FL; **demonstrated 5,630 mile path**

**The ZL ↔ FL path is 8,135 miles!**

Further tests from Vista View Park in Broward County, FL; **verified the equipment list**



# DX-Go-bag Station Living Room Test Results



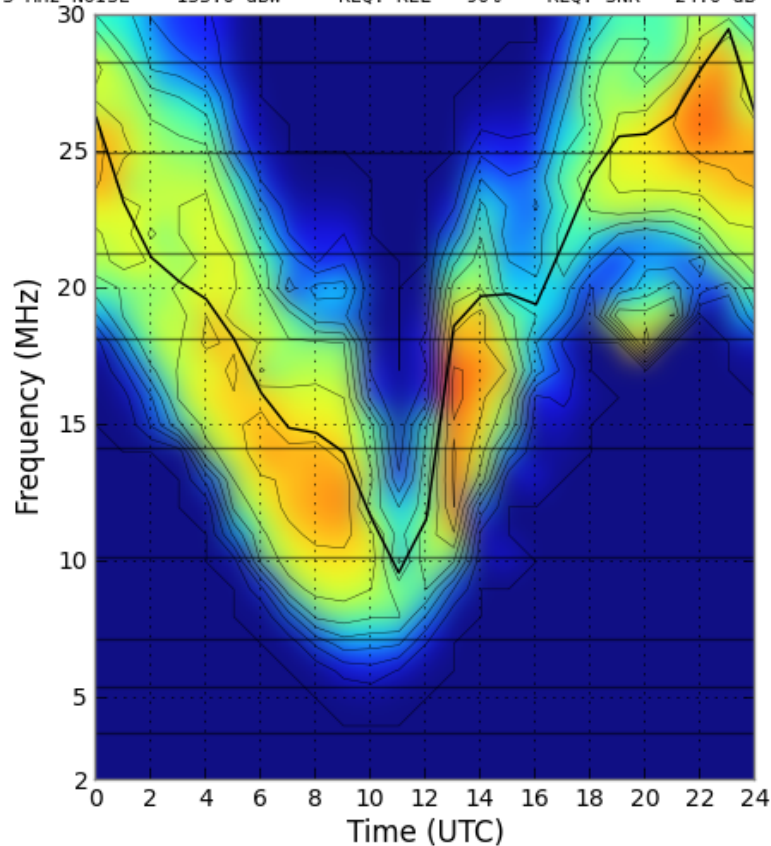
That builds confidence!

# VOACAP Prediction ZL ↔ FL

## JT65 at 5 W

Circuit Reliability (%)

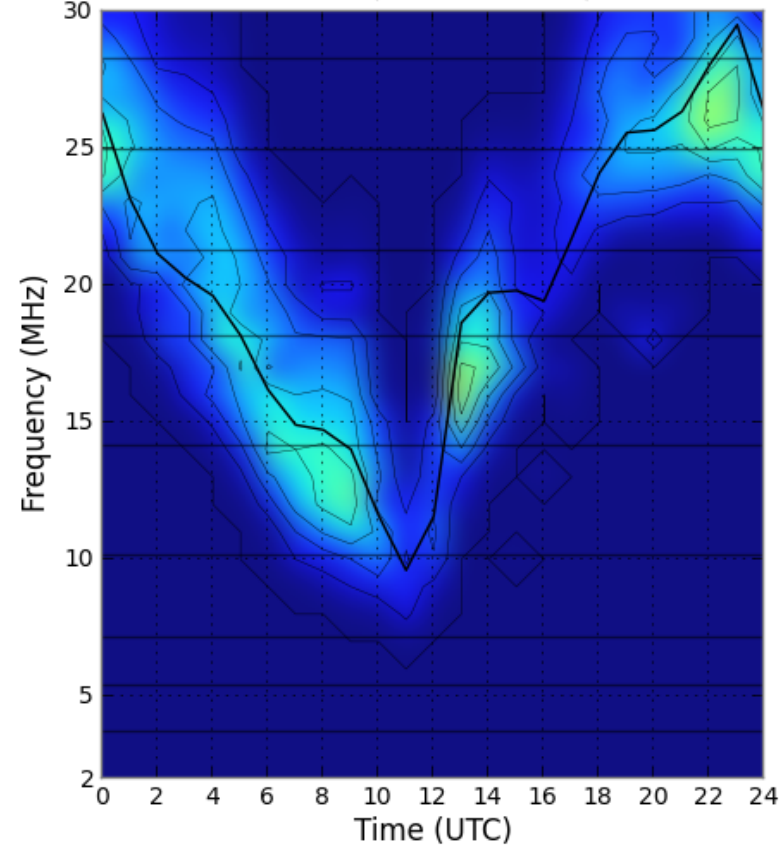
Dec 2014 SSN = 67. Minimum Angle= 0.100 degrees  
ZL/KE4PT S Florida AZIMUTHS N. MI. KM  
41.28 S 174.77 E - 26.25 N 80.27 W 78.29 235.13 7069.9 13092.4  
XMTR 2-30 2-D P-to-P[voaant/v14.ant ] Az= 0.0 OFFaz= 78.3 0.400kW  
RCVR 2-30 2-D P-to-P[voaant/d10m.ant ] Az= 0.0 OFFaz=235.1  
3 MHz NOISE = -155.0 dBW REQ. REL = 90% REQ. SNR = 24.0 dB



## CW at 5 W

Circuit Reliability (%)

Dec 2014 SSN = 67. Minimum Angle= 0.100 degrees  
ZL/KE4PT S Florida AZIMUTHS N. MI. KM  
41.28 S 174.77 E - 26.25 N 80.27 W 78.29 235.13 7069.9 13092.4  
XMTR 2-30 2-D P-to-P[voaant/v14.ant ] Az= 0.0 OFFaz= 78.3 0.004kW  
RCVR 2-30 2-D P-to-P[voaant/3el10m.ant ] Az= 0.0 OFFaz=235.1  
3 MHz NOISE = -155.0 dBW REQ. REL = 90% REQ. SNR = 24.0 dB





# Wizard's Choice: Portable Station Sites

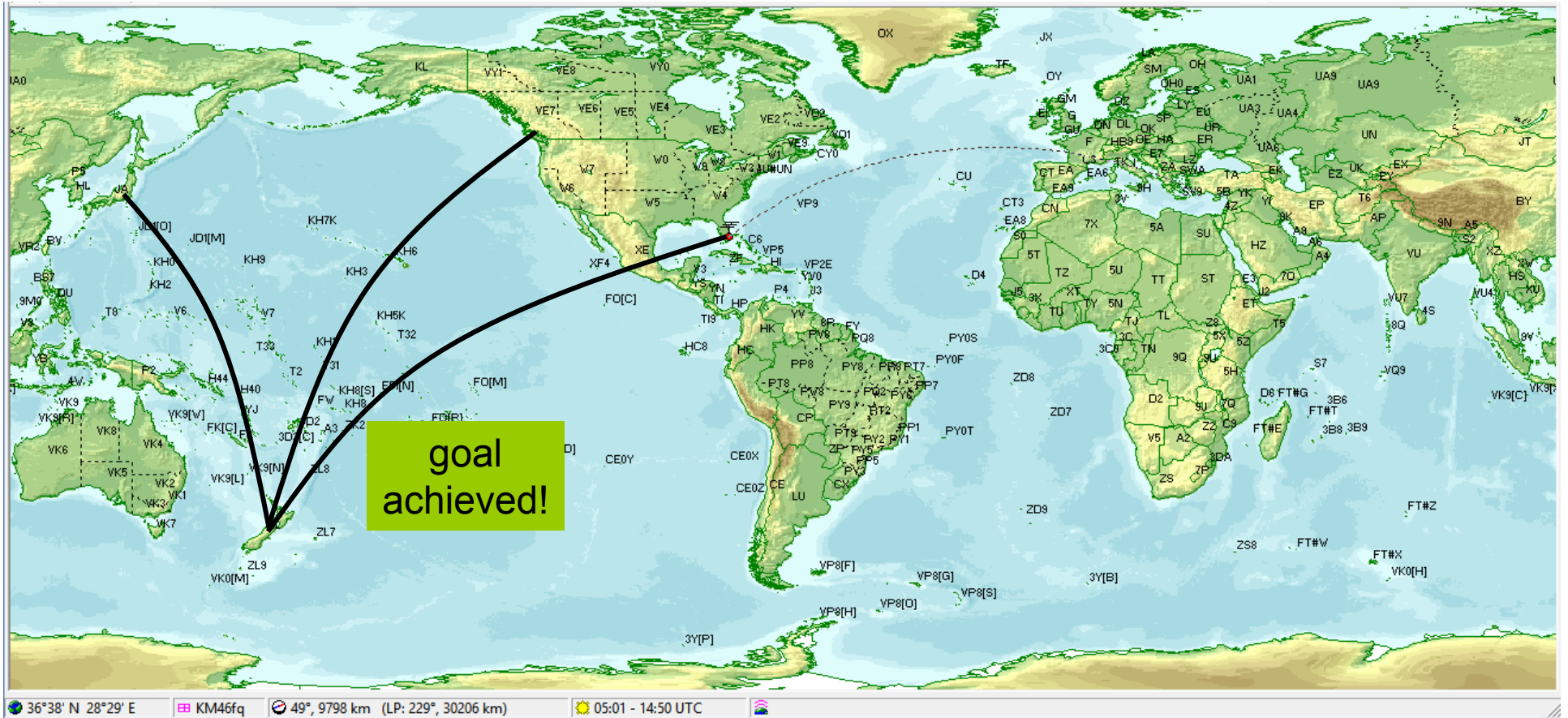


JT65 from Frank Kitts Park,  
Wellington, New Zealand



CW from Mount Victoria,  
Wellington, New Zealand

# Worked Three Countries on JT65




There is a lot of Pacific Ocean between ZL and any land to North and North East: **it's 8,000 miles or nothing!**



# Results

- I had a great deal of fun!
- Thoroughly enjoyed New Zealand touring and hiking!
- 2 hours allocated for JT65 made a handful of QSOs in 3 countries
- 2 hours allocated for CW, but no QSOs!
- Dan, AI4CJ, snagged a “new one” for DXCC!



Danny E. Ross 6260 Rose Terrace, Plantation, FL. 33317-1843 USA EL96vd  
Rig: iCOM-756, Heathkit SB-220, CL-33A Moseley 5-element Beam  
51' EZ-Way Tower, Carolina Windom Dipole 40/80m  
Signalink USB, FLDIGI, JT-65-HF, N1MM

Confirm QSO	Date (Z)	UTC	Freq/Mode	Power	Report
ZL/KE4PT	6 DEC 2014	00:40	21.076	40w	-20db

73 Tnx 4 new one from NZ!! And for ur qsl card.....dan



**Thank You!**





(C) 2005-6 Cenk E. Tezel  
& Tunc Tezel

<http://apod.nasa.gov/apod/ap131222.html>

