

Shared Documents - Running List
Michelle Zenner @gyptzy Twitter
#CERT #PrepareAthon #CascadiaEQ #smem

FEMA IS COURSE LIST <http://tinyurl.com/kg7for-training>

ARES Forms

<https://drive.google.com/folderview?id=0B0F6vDEDVKx6RmgwWTR1ZjFCZUU&usp=sharing&tid=0B0F6vDEDVKx6fjhxVjFkR0kyZDRFb29QRHdlSEdzMnEyaTFQcy13V2UjdHdKR1JaS3VWTzQ>

WA EMD FORMS

<https://drive.google.com/folderview?id=0B0F6vDEDVKx6fjhxVjFkR0kyZDRFb29QRHdlSEdzMnEyaTFQcy13V2UjdHdKR1JaS3VWTzQ&usp=sharing>

Last Revised June 30, 2020

Washington State counties OEM smem (needs updating)

<https://drive.google.com/file/d/0B7Hzx4c4bn7hSkdfWVBtOFFwNW8/view?usp=sharing>

February 2017 Conference DAMS EAPs SAFETY

<https://drive.google.com/drive/folders/0B0F6vDEDVKx6OVNsd0EzTmtYRkk?usp=sharing>

Cybersecurity

<https://drive.google.com/drive/folders/0B0F6vDEDVKx6YzdMYk1ySnpxTHM?usp=sharing>

Sandbagging = How to

<https://drive.google.com/file/d/0B0F6vDEDVKx6VIh4R2IFR3Qzdm8/view?usp=sharing>

Tips for Evacuating Vulnerable Populations - Florida

<https://drive.google.com/file/d/0B0F6vDEDVKx6Y3paWEtabEhmTFk/view?usp=sharing>

LESM

<https://drive.google.com/folderview?id=0B0F6vDEDVKx6Wlc0Sjdub2h1Y2M>

WA Schools

<https://drive.google.com/folderview?id=0B0F6vDEDVKx6dERyUnNxaVdPcW8>

CERT SOP Policies examples

<https://drive.google.com/folderview?id=0B7Hzx4c4bn7hM2p3c0h6eHhzcVU>

Washington state recent landslides

<https://t.co/wTdOoyYbYI>

Business Continuity - Mass Notification

<https://drive.google.com/file/d/0B0F6vDEDVKx6OHNSOGJ6Y3FGYIU/view?usp=sharing>

Landslide Fact Sheet Oregon -- good info #wawx #Skywarn

<https://drive.google.com/file/d/0B7Hzx4c4bn7heVJIZUZBMXhGWWs/view?usp=sharing>

Homeowners Landslide Guide Oregon -- good info #wawx #Skywarn

<https://drive.google.com/file/d/0B7Hzx4c4bn7hSXIwd2N3cmVXMIU/view?usp=sharing>

Shared Documents - Running List
Michelle Zenner @gyptzy Twitter
#CERT #PrepareAthon #CascadiaEQ #smem

FEMA IS COURSE LIST <http://tinyurl.com/kg7for-training>

ARES Forms

<https://drive.google.com/folderview?id=0B0F6vDEDVKx6RmgwWTR1ZjFCZUU&usp=sharing&tid=0B0F6vDEDVKx6fjhxVjFkR0kyZDRFb29QRHdlSEdzMnEyaTFQcy13V2UdHdKR1JaS3VWTzQ>

WA EMD FORMS

<https://drive.google.com/folderview?id=0B0F6vDEDVKx6fjhxVjFkR0kyZDRFb29QRHdlSEdzMnEyaTFQcy13V2UdHdKR1JaS3VWTzQ&usp=sharing>

Last Revised June 30, 2020

Clay Freinwald K7CR - Emergency Public Information Systems

<https://drive.google.com/file/d/0B7Hzx4c4bn7hT3V5d2dkWUhdX0ILS1ISYmxiYjhTbUJiTXJF/view?usp=sharing>

Presentation - Announcement EAS List Serve

<https://drive.google.com/file/d/0B7Hzx4c4bn7hNjdRM2JCX2xuNHc/view?usp=sharing>

CERT - Local information Thurston County

<https://drive.google.com/file/d/0B0F6vDEDVKx6MHU3Um5DVzJDVzg/view?usp=sharing>

Search and Rescue

<https://drive.google.com/folderview?id=0B0F6vDEDVKx6d294d2JUZXpPQ00>

“A lack of radio coordination..” #Oso #PilchuckShooting #Disaster

<https://drive.google.com/file/d/0B0F6vDEDVKx6XzJ4ejFNWkdhZGc/view?usp=sharing>

Talk to your community partners and agencies about ICS 205 Communications Plan

<https://drive.google.com/file/d/0B0F6vDEDVKx6Z040dIFFaIBJTfU/view?usp=sharing>

See ARRL MOU agencies <http://www.arrl.org/served-agencies-and-partners>

Private sector CERT - SLU Saint Louis University Connie Tillman tillmanc@slu.com

<https://drive.google.com/file/d/0B0F6vDEDVKx6dXdEWINmaFUzTVk/view?usp=sharing>

Tsunami Evacuation Brochures

<http://www.dnr.wa.gov/ResearchScience/Topics/GeologyPublicationsLibrary/Pages/tsuevac.aspx>

Tsunami Inundation Maps

<https://drive.google.com/file/d/0B0F6vDEDVKx6ZWJtRHlySWNjSDg/view?usp=sharing>

Pacific County All Hazards Guide 2012

<https://drive.google.com/file/d/0B0F6vDEDVKx6dIVqM3I0OWtMZ3c/view?usp=sharing>

Mason County All Hazards Guide 2013

<https://drive.google.com/file/d/0B0F6vDEDVKx6QjJINmMyNnM2aTQ/view?usp=sharing>

Grays Harbor All Hazards Guide 2009

<https://drive.google.com/file/d/0B0F6vDEDVKx6Um1UWnhNUEVjR28/view?usp=sharing>

Shared Documents - Running List
Michelle Zenner @gyptzy Twitter
#CERT #PrepareAthon #CascadiaEQ #smem

FEMA IS COURSE LIST <http://tinyurl.com/kg7for-training>

ARES Forms

<https://drive.google.com/folderview?id=0B0F6vDEDVKx6RmgwWTR1ZjFCZUU&usp=sharing&tid=0B0F6vDEDVKx6fjhXVjFkR0kyZDRFb29QRHdlSEdzMnEyaTFQcy13V2JdHdKR1JaS3VWTzQ>

WA EMD FORMS

<https://drive.google.com/folderview?id=0B0F6vDEDVKx6fjhXVjFkR0kyZDRFb29QRHdlSEdzMnEyaTFQcy13V2JdHdKR1JaS3VWTzQ&usp=sharing>

Last Revised June 30, 2020

Clallam and Jefferson County All Hazards Guide (no date)

<https://drive.google.com/file/d/0B0F6vDEDVKx6Um1UWnhNUEVjR28/view?usp=sharing>

The Agency by Adrian Chen June 2, 2015 The New York Times #smem

<https://drive.google.com/file/d/0B0F6vDEDVKx6bDVSTIJyZ1g0Ymc/view?usp=sharing>

Best Practices Prescribed Europe

<https://drive.google.com/file/d/0B0F6vDEDVKx6WU1rVDYtQy1SWDQ/view?usp=sharing>

WA EMD Strategic Plan

<https://drive.google.com/file/d/0B0F6vDEDVKx6d0Mxb19mWmxUckk/view?usp=sharing>

Citizens Corps and the National Planning Frameworks

<https://drive.google.com/file/d/0B0F6vDEDVKx6dUpvdzM3TE1hMXM/view?usp=sharing>

Citizens Corps Whole Community and the CERT Program Core Capabilities Tool

<https://drive.google.com/file/d/0B0F6vDEDVKx6YmpuWkR3aGhVZW8/view?usp=sharing>

Companion Document

<https://drive.google.com/file/d/0B0F6vDEDVKx6Z1BCV1JIRIUzaTg/view?usp=sharing>

Washington Public Records Act - Cities Counties and Special Districts (MRSC)

<https://drive.google.com/file/d/0B0F6vDEDVKx6TjUwbEFta3FNd0k/view?usp=sharing>

Technology and Social Media to enhance your CERT h/t @MaryJoFly

<https://drive.google.com/file/d/0B0F6vDEDVKx6WHIzWml5dXBhdEU/view>

National Interoperability Field Operations Guide version 1.5 DHS 2014

<https://drive.google.com/file/d/0B0F6vDEDVKx6R3FBWXJwTIJicFE/view?usp=sharing>

Washington State Citizens Corps - Public Access

<http://www.citizencorps.wa.gov/about/privacy.asp#access>

CERT Team Leadership - May 2012 - Participant Manual

<https://drive.google.com/file/d/0B0F6vDEDVKx6X1o0eGp0aTVPRkE/view?usp=sharing>

Power Point - CERT Team Leadership

<https://drive.google.com/file/d/0B0F6vDEDVKx6NUF3NTJfdTczUmc/view?usp=sharing>

CERT Team Leadership - Instructor Guide

Shared Documents - Running List
Michelle Zenner @gyptzy Twitter
#CERT #PrepareAthon #CascadiaEQ #smem

FEMA IS COURSE LIST <http://tinyurl.com/kg7for-training>

ARES Forms

<https://drive.google.com/folderview?id=0B0F6vDEDVKx6RmgwWTR1ZjFCZUU&usp=sharing&tid=0B0F6vDEDVKx6fjhxVjFkR0kyZDRFb29QRHdlSEdzMnEyaTFQocy13V2UdHdKR1JaS3VWTzQ>

WA EMD FORMS

<https://drive.google.com/folderview?id=0B0F6vDEDVKx6fjhxVjFkR0kyZDRFb29QRHdlSEdzMnEyaTFQocy13V2UdHdKR1JaS3VWTzQ&usp=sharing>

Last Revised June 30, 2020

<https://drive.google.com/file/d/0B0F6vDEDVKx6NS1DSE9PTnlud1U/view?usp=sharing>

Massachusetts CERT Best Practices Guide - April 2015

<https://drive.google.com/file/d/0B0F6vDEDVKx6UnZzaVNpLUM3cTg/view?usp=sharing>

CERT Liability Guide updated April 2015

<https://drive.google.com/file/d/0B0F6vDEDVKx6bjQ0Si1xNmI1U1U/view?usp=sharing>

Celebrate Safely Campaign Kit - <http://www.wsp.wa.gov/fire/fireworks.htm>

<https://drive.google.com/file/d/0B0F6vDEDVKx6UHK4TGRkdmMzTEE/view?usp=sharing>

Illegal Fireworks

<https://drive.google.com/file/d/0B0F6vDEDVKx6a2VWdUhhdl9jZm8/view?usp=sharing>

Legal Fireworks

<https://drive.google.com/file/d/0B0F6vDEDVKx6MTBGNmFiMFJSNTQ/view>

Cooling Centers June 2015 - King / Pierce

<https://drive.google.com/file/d/0B0F6vDEDVKx6N3JET21uaTI6NWM/view?usp=sharing>

The Great Alaska Quake of 1964 M9.2

<http://earthquake.alaska.edu/earthquakes/notable/1964-m92-great-alaskan-earthquake>

Google Book - The Great Alaska Earthquake 1964

<https://drive.google.com/file/d/0B0F6vDEDVKx6QWJGMDBpUldtbnM/view?usp=sharing>

Protecting and Safeguarding Critical Documents and Valuables #PrepareAthon

<https://drive.google.com/file/d/0B0F6vDEDVKx6MUw0eGFMNIVLTIU/view?usp=sharing>

Wenatchee #SleepyHollowFire - June 29/30 2015

<https://drive.google.com/file/d/0B0F6vDEDVKx6Z2s0R1VmNEdQVXM/view?usp=sharing>

DNR Fire Contacts - Regions NEW 2020

<https://drive.google.com/file/d/0B0F6vDEDVKx6X29oWmozaHNuU2M/view?usp=sharing>

#SMEM SockeyeFire Alaska June 15, 2015 - websites

<https://drive.google.com/file/d/0B0F6vDEDVKx6dC1qVkgxbzZNMjQ/view>

Twitter List - Alaska Fire - <https://twitter.com/MsZenner/lists/alaska-fire>

Shared Documents - Running List
Michelle Zenner @gyptzy Twitter
#CERT #PrepareAthon #CascadiaEQ #smem

FEMA IS COURSE LIST <http://tinyurl.com/kg7for-training>

ARES Forms

<https://drive.google.com/folderview?id=0B0F6vDEDVKx6RmgwWTR1ZjFCZUU&usp=sharing&tid=0B0F6vDEDVKx6fjhxVjFkR0kyZDRFb29QRHdlSEdzMnEyaTFQcy13V2JdHdKR1laS3VWTzQ>

WA EMD FORMS

<https://drive.google.com/folderview?id=0B0F6vDEDVKx6fjhxVjFkR0kyZDRFb29QRHdlSEdzMnEyaTFQcy13V2JdHdKR1laS3VWTzQ&usp=sharing>

Last Revised June 30, 2020

ESF 15 Standard Operating Procedures

<https://drive.google.com/file/d/0B0F6vDEDVKx6ejAybjRQTHpDaWc/view?usp=sharing>

Landslides Washington

https://docs.google.com/document/d/1eM5g1NgL1iP51QdKZcp8ch9_G_8EEIbAsmCOEDWusdc/edit?usp=sharing

National Preparedness Goal

<https://drive.google.com/file/d/0B0F6vDEDVKx6VUdLNEM4RHpINmc/view?usp=sharing>

National Preparedness Report March 2015

<https://drive.google.com/file/d/0B0F6vDEDVKx6aGhjbmo3djlDSUk/view?usp=sharing>

National Volunteer Organizations Active in Disaster 2015 Conference, New Orleans, Louisiana

<https://drive.google.com/file/d/0B0F6vDEDVKx6Y1p0NW5XVEtpNGs/view?usp=sharing>

Rapid Damage Assessment for Volunteers PPT - 2013 Lacey Fire D13 Lt. Berman

<https://drive.google.com/file/d/0B0F6vDEDVKx6LWgxNIh2T0xWZEU/view?usp=sharing>

Rapid Damage Assessment for Volunteers - 2013 Lt. Berman, TCFPD3 Lacey, WA

<https://drive.google.com/file/d/0B0F6vDEDVKx6WTRxQnhZaXd6OWM/view?usp=sharing>

ESF #2 Communications - 2008

<https://drive.google.com/file/d/0B0F6vDEDVKx6aVQxMXdoUm5HT2c/view?usp=sharing>

ARES MANUAL

<https://drive.google.com/file/d/0B0F6vDEDVKx6MmJmX09xTVpmU0E/view?usp=sharing>

Shared Documents - Running List
Michelle Zenner @gyptzy Twitter
#CERT #PrepareAthon #CascadiaEQ #smem

FEMA IS COURSE LIST <http://tinyurl.com/kg7for-training>

ARES Forms

<https://drive.google.com/folderview?id=0B0F6vDEDVKx6RmgwWTR1ZjFCZUU&usp=sharing&tid=0B0F6vDEDVKx6fjhxVjFkR0kyZDRFb29QRHdlSEdzMnEyaTFOcy13V2JdHdKR1JaS3VWTzQ>

WA EMD FORMS

<https://drive.google.com/folderview?id=0B0F6vDEDVKx6fjhxVjFkR0kyZDRFb29QRHdlSEdzMnEyaTFOcy13V2JdHdKR1JaS3VWTzQ&usp=sharing>

Last Revised June 30, 2020

MOU's ARRL ARES

Documents - Civil Air Patrol - DHS/FEMA - Red Cross - National Weather Service / Skywarn - National Frequency Coordinators Council

<https://drive.google.com/folderview?id=0B7Hzx4c4bn7hflpkXzJDdUV4UnEtb2FIX0IXSDNQSXB2aW45QUNRRIVsWE9NSmQzTXBHQ3c&usp=sharing#grid>

MOU's ARRL ARES -- More <http://www.arri.org/served-agencies-and-partners>

FEMA IS 288 - The Role of Voluntary Organizations in Emergency Management Feb 2015

<http://www.training.fema.gov/is/courseoverview.aspx?code=IS-288.a>

http://training.fema.gov/emiweb/is/is288a/is-0288a_download.pdf

Landslides Washington

https://docs.google.com/document/d/1eM5g1NgL1iP51QdKZcp8ch9_G_8EEIbAsmCOEDWusc/edit?usp=sharing

Drinking Water Advisory Communication Toolbox -

<https://drive.google.com/file/d/0B0F6vDEDVKx6R3Z3UWxKSI9wbG8/view?usp=sharing>

Treatment of Drinking Water For Emergency Use - Boil Water -

<https://drive.google.com/file/d/0B0F6vDEDVKx6ZmJpUjVCZGE4WUU/view?usp=sharing>

Quake Smart Tool Kits - Business - Family - Home

<https://drive.google.com/folderview?id=0B0F6vDEDVKx6fIpIMWx0b3ZBNWxESHBuM1pLRmQ3c3J6RzRyYjFTMFZNbk9wYXN0Z0JsV0k&usp=sharing>

Quake Smart - <http://www.flash.org/quakesmartcommunity/resources.html>

Quake Smart Program - #QuakeSmart Twitter List <https://twitter.com/MsZenner/lists/quakesmart>

@jdselling @quakesmart @PNSN1 @kentreporter @BizExam @ShakeOut
@Ines_Pearce @eqconsortium @fema @jasonballmann @FederalAlliance @ECA
@OregonBusiness @strongtie @SAFETPROOF @waEMD @CascadiaEQ @wsspc
@PortlandBEM @OregonOEM @QuakeSummit2015 @FemaRegion10 @dvmarzano
@paulbodin @Ines_Pearce

Shared Documents - Running List
Michelle Zenner @gyptzy Twitter
#CERT #PrepareAthon #CascadiaEQ #smem

FEMA IS COURSE LIST <http://tinyurl.com/kg7for-training>

ARES Forms

<https://drive.google.com/folderview?id=0B0F6vDEDVKx6RmgwWTR1ZjFCZUu&usp=sharing&tid=0B0F6vDEDVKx6fjhxVjFkR0kyZDRFb29QRHdlSEdzMnEyaTFQcy13V2JldHdKR1laS3VWTzQ>

WA EMD FORMS

<https://drive.google.com/folderview?id=0B0F6vDEDVKx6fjhxVjFkR0kyZDRFb29QRHdlSEdzMnEyaTFQcy13V2JldHdKR1laS3VWTzQ&usp=sharing>

Last Revised June 30, 2020

Knots

https://docs.google.com/document/d/1Uu0IX8XydoTfBcC9cFM_b_-RGbeD6I2Fp5JEN6vqJPw/e/dit?usp=sharing

Psychological First Aid - MRC

<https://drive.google.com/file/d/0B7Hzx4c4bn7hUnhtVGwxTHBScIE/view?pli=1>

Cascadia Subduction Zone 2013

<https://drive.google.com/file/d/0B0F6vDEDVKx6Sjv5R0x6R0VBWTQ/view?usp=sharing>

Lindsey Cohen's Geography Lesson - Social Media and Emergency Management November 2014 aka Sniping PIOs & "trusted" media agents from the SuperDome with Chris Kyle and why location is important during evacuation & why MEDIA is responsible for accurate social media information - Misinformation - Disinformation - Inaccuracies Media & Disaster

MAP: <https://www.google.com/maps/d/edit?mid=zI6raoNmaquU.kkKF1UPkVE-E>

DOC:

<https://docs.google.com/document/d/1VyKusRiWehgyLZHALLVkfW6S6CK1MPTIbXbjvR9JRk-l/e/dit?usp=sharing>



Lindsey Cohen's Geography Lesson - A webcam shot of the Carbon River 20 miles NORTH of the evacuation site.

Where does social media fit in the EOC?

<https://drive.google.com/file/d/0B0F6vDEDVKx6cmpUWWVXNFR3RVk/view?usp=sharing>

Shared Documents - Running List
Michelle Zenner @gyptzy Twitter
#CERT #PrepareAthon #CascadiaEQ #smem

FEMA IS COURSE LIST <http://tinyurl.com/kg7for-training>

ARES Forms

<https://drive.google.com/folderview?id=0B0F6vDEDVKx6RmgwWTR1ZjFCZUU&usp=sharing&tid=0B0F6vDEDVKx6fjhxVjFkR0kyZDRFb29QRHdlSEdzMnEyaTFOcy13V2UdHdKR1JaS3VWTzQ>

WA EMD FORMS

<https://drive.google.com/folderview?id=0B0F6vDEDVKx6fjhxVjFkR0kyZDRFb29QRHdlSEdzMnEyaTFOcy13V2UdHdKR1JaS3VWTzQ&usp=sharing>

Last Revised June 30, 2020

A Guide to Social Media Emergency Management Analytics-Understanding the Place of Analytics through Typhoon Haiyan Social Media Analysis

<https://drive.google.com/file/d/0B0F6vDEDVKx6TkdpWjdDRlc3WnM/view?usp=sharing>

Social Capital* (Version 1.2)+ Building Toolkit October, 2006 By Thomas H. Sander and Kathleen Lowney

<https://drive.google.com/file/d/0B0F6vDEDVKx6SI8zdjBiVnkyMmM/view?usp=sharing>

What you need to know about Functional Needs in your Shelter

<https://drive.google.com/file/d/0B0F6vDEDVKx6LTdCSmJWTTk3YUZLRHIQcVR1anpUSmRGeTVv/view?usp=sharing>

CERT - Emergency Communication

<https://drive.google.com/file/d/0B0F6vDEDVKx6YVF0SDk0NS1SZVU/view?usp=sharing>

How to tweet responsibly in Severe Weather - #Skywarn #hamradio

<https://drive.google.com/file/d/0B0F6vDEDVKx6MjMzSDhZb216SFU/view?usp=sharing>

Teachable Moments Honshu, Japan 2011

<https://drive.google.com/file/d/0B0F6vDEDVKx6MDkyZmM2OWItNzA0Ny00YzkyLTk4YzAtM2VkYjBhZGZkOWMy/view?usp=sharing>

To Define, Locate, and Reach Special, Vulnerable, and At-risk Populations in an Emergency

<https://drive.google.com/file/d/0B0F6vDEDVKx6ejBXNFIyWE1EemM/view?usp=sharing>

APCO -NENA PSAP

<https://drive.google.com/file/d/0B7Hzx4c4bn7hQzk5ZFZhVTJuMTA/view?usp=sharing>

Red Cross 72 hour check list supply list

<https://drive.google.com/file/d/0B7Hzx4c4bn7hWmRqamdpOUFUdGs/view?usp=sharing>

Be Red Cross Ready

<https://drive.google.com/file/d/0B7Hzx4c4bn7hMmlhTmhhR25iODA/view?usp=sharing>

WA EMD Checklist

<https://drive.google.com/file/d/0B7Hzx4c4bn7hUU1JSmZqaDRUZEK/view?usp=sharing>

Shared Documents - Running List
Michelle Zenner @gyptzy Twitter
#CERT #PrepareAthon #CascadiaEQ #smem

FEMA IS COURSE LIST <http://tinyurl.com/kg7for-training>

ARES Forms

<https://drive.google.com/folderview?id=0B0F6vDEDVKx6RmgwWTR1ZjFCZUU&usp=sharing&tid=0B0F6vDEDVKx6fjhxVjFkR0kyZDRFb29QRHdlSEdzMnEyaTFOcy13V2JdHdKR1JaS3VWTzQ>

WA EMD FORMS

<https://drive.google.com/folderview?id=0B0F6vDEDVKx6fjhxVjFkR0kyZDRFb29QRHdlSEdzMnEyaTFOcy13V2JdHdKR1JaS3VWTzQ&usp=sharing>

Last Revised June 30, 2020

Thurston county update on landslide risks

<https://drive.google.com/file/d/0B7Hzx4c4bn7hM3ZxbW5qb1NPM0E/view?usp=sharing>

Tsunami Warning and Preparedness: An assessment of the US Tsunami Program and the Nation's Preparedness Efforts

<https://drive.google.com/file/d/0B0F6vDEDVKx6NVUxMno3TVNvQVv/view?usp=sharing>

Cascadia - Oregon Dept of Geology - Winter 2012

<https://drive.google.com/file/d/0B0F6vDEDVKx6ZDBWMWdWajZUc2M/view?usp=sharing>

FEMA Region X Quarterly Training

ESF Function

<https://drive.google.com/file/d/0B7Hzx4c4bn7hQjJpUnIHdkllbGkzU19Ba0RJYnFhc05ua1Fv/view?usp=sharing>

Cascadia Rising- FOR - Catastrophic Earthquake and Tsunami Functional Exercise 2016

<https://drive.google.com/file/d/0B7Hzx4c4bn7hOTFWWXISVm1ZLWJpS2pwOHNWM0FuNXBqVHdN/view?usp=sharing>

The Verification Handbook - How to Verify Social Media Posts

<https://drive.google.com/file/d/0B0F6vDEDVKx6eWpqQkxhQjVvM0E/view?usp=sharing>

Hurricane Katrina: A Nation Still Unprepared - 2006 Committee on Homeland Security and Governmental Affairs

<https://drive.google.com/file/d/0B0F6vDEDVKx6cHFNeEZaaDNyQUk/view>

List of Online Social Media Verification Tools July 2014 @Tech4Relief Gabriele Almon

https://docs.google.com/document/d/1oTUGslvk89pVHluQGclQEztpxU_QfsluN-TMesxhcLc/edit?usp=sharing

Tweak the Tweet - 2010

<https://drive.google.com/file/d/0B0F6vDEDVKx6TVFqS2phQIRhcG8/view?usp=sharing>

Tweak the Tweet - Design Application Specs

<https://drive.google.com/file/d/0B0F6vDEDVKx6MmdKUFVGTnhUbkk/view?usp=sharing>

Shared Documents - Running List
Michelle Zenner @gyptzy Twitter
#CERT #PrepareAthon #CascadiaEQ #smem

FEMA IS COURSE LIST <http://tinyurl.com/kg7for-training>

ARES Forms

<https://drive.google.com/folderview?id=0B0F6vDEDVKx6RmgwWTR1ZjFCZUu&usp=sharing&tid=0B0F6vDEDVKx6fjhxVjFkR0kyZDRFb29QRHdlSEdzMnEyaTFQcy13V2UjdhdkR1laS3VWTzQ>

WA EMD FORMS

<https://drive.google.com/folderview?id=0B0F6vDEDVKx6fjhxVjFkR0kyZDRFb29QRHdlSEdzMnEyaTFQcy13V2UjdhdkR1laS3VWTzQ&usp=sharing>

Last Revised June 30, 2020

FEMA IS 100b updated (2013) Course Summary

<https://drive.google.com/file/d/0B7Hzx4c4bn7hb09fSk9wWGlUNms/view?usp=sharing>

<http://emilms.fema.gov/IS100b/ICS01summary.htm>

Washington State EAS Plan 2014

<https://drive.google.com/file/d/0B7Hzx4c4bn7hTUNpeFRNdFdHdW8/view?usp=sharing>

<https://mil.wa.gov/emergency-alert-system-eas-state-plan>

IAEM 2015 - Cyber Security Webinar - VSMWG Virtual Social Media Working Group

<https://drive.google.com/folderview?id=0B0F6vDEDVKx6fm5rR2hqS2hVcng5aDZGOU1PdkRNRS1nVThvT0dSbHVrb3FvUTlyR3c3TDg&usp=sharing>

FCC December 2014 PUBLIC NOTICE - FALSE EAS ALERT

Michigan, Georgia, North Carolina, Arkansas, Tennessee, Texas and others -

<https://drive.google.com/file/d/0B7Hzx4c4bn7hMUx5Q3RId1R0Qmc/view?usp=sharing>

<http://www.fcc.gov/document/eas-advisory-inquiry-retransmission-unauthorized-eas-message>

EAS software error:

<https://drive.google.com/file/d/0B7Hzx4c4bn7hVnp4V21hZ3RTX1k/view?usp=sharing>

Radio World R. Stine October 2014

<https://drive.google.com/file/d/0B7Hzx4c4bn7hbzQ4R0RYVnkyYkE/view?usp=sharing>

<http://www.radioworld.com/>

Required Monthly Test Schedule

http://www.wsab.org/eas/eas_tab11.html

<https://static1.squarespace.com/static/59653d3f725e253e7458a7b7/t/5e161a80ddaf56731d87e4bd/1578506882083/EAS+Tab+11-+2020+RMT+Sched..pdf>

<https://drive.google.com/file/d/0B7Hzx4c4bn7hd3hXb1g4UTNaVU5IS0tJbEtjbEZIZG5wR1Vr/view?usp=sharing>

SBE EAS LIST

<https://pairlist7.pair.net/pipermail/sbe-eas/>

Shared Documents - Running List
Michelle Zenner @gyptzy Twitter
#CERT #PrepareAthon #CascadiaEQ #smem

FEMA IS COURSE LIST <http://tinyurl.com/kg7for-training>

ARES Forms

<https://drive.google.com/folderview?id=0B0F6vDEDVKx6RmgwWTR1ZjFCZUU&usp=sharing&tid=0B0F6vDEDVKx6fjhxVjFkR0kyZDRFb29QRHdlSEdzMnEyaTFOcy13V2UdHdKR1laS3VWTzQ>

WA EMD FORMS

<https://drive.google.com/folderview?id=0B0F6vDEDVKx6fjhxVjFkR0kyZDRFb29QRHdlSEdzMnEyaTFOcy13V2UdHdKR1laS3VWTzQ&usp=sharing>

Last Revised June 30, 2020

Washington Weather Reports Twitter Map

<https://www.google.com/maps/d/edit?mid=zNoc8d-zN5WY.kfJ5poaPzWZs>

Dangerous Wildlife Reports

<https://wdfw.wa.gov/species-habitats/living/dangerous-wildlife/reports>

National Mass Care Strategy - ESF #6

<http://nationalmasscarestrategy.org>

National Mass Care Webinar Series: "Benefits of Implementing the Donated Resources Policy"

<https://fema.connectsolutions.com/p9k6xg2oyb7/?launcher=false&fcsContent=true&pbMode=normal>

Multi Agency Sheltering Plan Template

<https://drive.google.com/file/d/0B7Hzx4c4bn7hTnU2Q0wtX2tqREE/view?usp=sharing>

Donated Resources Policy and Implementation Slides from Webinar

<https://drive.google.com/file/d/0B7Hzx4c4bn7hMDZyX19WekxkYXc/view?usp=sharing>

FEMA Plans to Reimburse Faith Groups for Aid

As Civil Libertarians Object, Religious Organizations Weigh Whether to Apply By Alan Cooperman and Elizabeth Williamson

Washington Post Staff Writers Tuesday, September 27, 2005

<https://drive.google.com/file/d/0B7Hzx4c4bn7hd3NpbVNfS2dzRmM/view?usp=sharing>

Checklist for Integrating People with Disabilities and Other with Access and Functional Needs into Emergency Preparedness, Planning, Response & Recovery

<https://drive.google.com/file/d/0B7Hzx4c4bn7hZ1EwRS16bnpGdHM/view?usp=sharing>

Preparing for Disaster for People with Disabilities and other Special Needs

<https://drive.google.com/file/d/0B7Hzx4c4bn7hcHZ1dDJJeGlxbGc/view?usp=sharing>

Guidance on Planning for Integration of Functional Needs Support Services in General Population Shelters November 2010

<https://drive.google.com/file/d/0B7Hzx4c4bn7hRnhVSA5RUppc0E/view?usp=sharing>

Shared Documents - Running List
Michelle Zenner @gyptzy Twitter
#CERT #PrepareAthon #CascadiaEQ #smem

FEMA IS COURSE LIST <http://tinyurl.com/kg7for-training>

ARES Forms

<https://drive.google.com/folderview?id=0B0F6vDEDVKx6RmgwWTR1ZjFCZUU&usp=sharing&tid=0B0F6vDEDVKx6fjhxVjFkR0kyZDRFb29QRHdlSEdzMnEyaTFQcy13V2JdHdKR1laS3VWTzQ>

WA EMD FORMS

<https://drive.google.com/folderview?id=0B0F6vDEDVKx6fjhxVjFkR0kyZDRFb29QRHdlSEdzMnEyaTFQcy13V2JdHdKR1laS3VWTzQ&usp=sharing>

Last Revised June 30, 2020

Functional Needs Support Services Missouri

<http://www.slideshare.net/northlandfox/functional-needs-support-services-preparedness-missouri>

Guide for Emergency Managers

<http://nod.org/assets/downloads/Guide-Emergency-Planners.html>

Emergency Managers Guide to People with Functional Needs

<http://nod.org/assets/downloads/Guide-Emergency-Planners.html>

<https://drive.google.com/file/d/0B7Hzx4c4bn7hRGxnY0c4RkFkR1E/view?usp=sharing>

Disability Preparedness Tips

http://www.disastersrus.org/MyDisasters/disability/disability_preparedness.htm

Disability dot Gov

<https://www.disability.gov/resource/disability-govs-guide-emergency-preparedness-disaster-recovery/>

American Sign Language - Grammar

<http://www.lifeprint.com/asl101/pages-layout/grammar.htm>

BEACON - Berkley Emergency Accessible Community Organizations Network

<http://www.cityofberkeley.info/BEACON/>

Nursing Home Preparedness

<https://drive.google.com/file/d/0B7Hzx4c4bn7hd245TmZMUEdscG8/view?usp=sharing>

Washington State Emergency Worker Program

<https://drive.google.com/file/d/0B7Hzx4c4bn7hdVRMUE5mVXR0S1E/view?usp=sharing>

For additional information, please contact

Chris Long, State Search and Rescue Coordinator, at (253) 512-7024.

<http://mil.wa.gov/other-links/search-and-rescue-sar-program>

FEMA Support Annexes

<https://drive.google.com/file/d/0B7Hzx4c4bn7hWS0zNmxiZGEzWUU/view?usp=sharing>

Shared Documents - Running List
Michelle Zenner @gyptzy Twitter
#CERT #PrepareAthon #CascadiaEQ #smem

FEMA IS COURSE LIST <http://tinyurl.com/kg7for-training>

ARES Forms

<https://drive.google.com/folderview?id=0B0F6vDEDVKx6RmgwWTR1ZjFCZUU&usp=sharing&tid=0B0F6vDEDVKx6fjhxVjFkR0kyZDRFb29QRHdlSEdzMnEyaTFOcy13V2UJdHdKR1JaS3VWTzQ>

WA EMD FORMS

<https://drive.google.com/folderview?id=0B0F6vDEDVKx6fjhxVjFkR0kyZDRFb29QRHdlSEdzMnEyaTFOcy13V2UJdHdKR1JaS3VWTzQ&usp=sharing>

Last Revised June 30, 2020

The Support Annexes describe how Federal departments and agencies; State, tribal, and local entities; the private sector; volunteer organizations; and nongovernmental organizations (NGOs) coordinate and execute the common functional processes and administrative requirements necessary to ensure efficient and effective incident management. During an incident, numerous procedures and administrative functions are required to support incident management.

The actions described in the Support Annexes are not limited to particular types of events but are overarching in nature and applicable to nearly every type of incident. In addition, they may support several Emergency Support Functions (ESFs). Examples include public affairs, international affairs, and worker safety and health.

The Support Annexes may be fully or partially implemented without the Secretary of Homeland Security coordinating Federal operations.

122 Pepper Websites - by Michael Snyder worth a look

<https://docs.google.com/document/d/1xzIXsgy7i2v6o8HG4iHPA3eocaN4noIRnhMaRN356Ik/edit>

<http://marketdailynews.com/2014/12/26/the-ultimate-prepper-list-122-of-the-best-online-prepper-websites>

Going off the Grid

<https://drive.google.com/file/d/0B7Hzx4c4bn7hWC1XZmJKTjdrd0E/view?usp=sharing>

Understand the Cost to Consumers

<https://drive.google.com/file/d/0B7Hzx4c4bn7hUGd4eGlaZzJPbTQ/view?usp=sharing>

ESCC Charter

<https://drive.google.com/file/d/0B7Hzx4c4bn7haHNSa1VDWC1jYU0/view?usp=sharing>

Automatic Disaster Impact Analysis

<https://drive.google.com/file/d/0B7Hzx4c4bn7hMnI5UzdQNTVvbDQ/view?usp=sharing>

EARSS - The Energy Awareness and Resiliency Standardized Services (EARSS) System

<https://drive.google.com/file/d/0B7Hzx4c4bn7hY1JlaFdvZUVROWs/view?usp=sharing>

February 27 2015 #smemchat (Pikes Peak ARES Colorado) Yaesu HT to Twitter

<https://drive.google.com/file/d/0B7Hzx4c4bn7hc3R6Q2tEWHBZLWs/view?usp=sharing>

Skywarn Field Guide - edited to include landslide hazards

<https://drive.google.com/file/d/0B7Hzx4c4bn7hSk0tdHVfaXVWMFE/view>

Shared Documents - Running List
Michelle Zenner @gyptzy Twitter
#CERT #PrepareAthon #CascadiaEQ #smem

FEMA IS COURSE LIST <http://tinyurl.com/kg7for-training>

ARES Forms

<https://drive.google.com/folderview?id=0B0F6vDEDVKx6RmgwWTR1ZjFCZUU&usp=sharing&tid=0B0F6vDEDVKx6fjhxVjFkR0kyZDRFb29QRHdlSEdzMnEyaTFOcy13V2JdHdKR1laS3VWTzQ>

WA EMD FORMS

<https://drive.google.com/folderview?id=0B0F6vDEDVKx6fjhxVjFkR0kyZDRFb29QRHdlSEdzMnEyaTFOcy13V2JdHdKR1laS3VWTzQ&usp=sharing>

Last Revised June 30, 2020

Draft Federal Flood Risk Management Standard Implementing Guidelines [Main Content](#)

The Federal Flood Risk Management Standard has been developed to create a national minimum flood risk management standard to ensure that Federal Actions that are located in or near the floodplain when there are no other practical alternatives last as long as intended by considering risks, changes in climate, and vulnerability. Draft Implementing Guidelines guide Federal agencies in implementing the Federal Flood Risk Management Standard, which they will do through agency-specific guidelines and procedures.

DRAFT - January 2015 -- Comments extended until: May 6, 2015

<https://drive.google.com/file/d/0B0F6vDEDVKx6cXVfTjBxT3JFbkk/view?usp=sharing>

What is the obligation of the states to maintain maps of small tributaries contributing to landslide or erosive hazard?

Equally, what is the obligation of FEMA to update its FLOOD MAPS to include small tributaries that contribute to landslide and erosive hazard?

What is the obligation of both FEMA and the states to maintain FLOOD MAPS spanning counties and Federal jurisdictions (military bases) where small tributaries contribute to landslide hazards - where flooding may or may NOT be an issue - BUT waterflow during high periods of rain contribute as landslide erosion factor?

Shared Documents - Running List
 Michelle Zenner @gyptzy Twitter
 #CERT #PrepareAthon #CascadiaEQ #smem

FEMA IS COURSE LIST <http://tinyurl.com/kg7for-training>

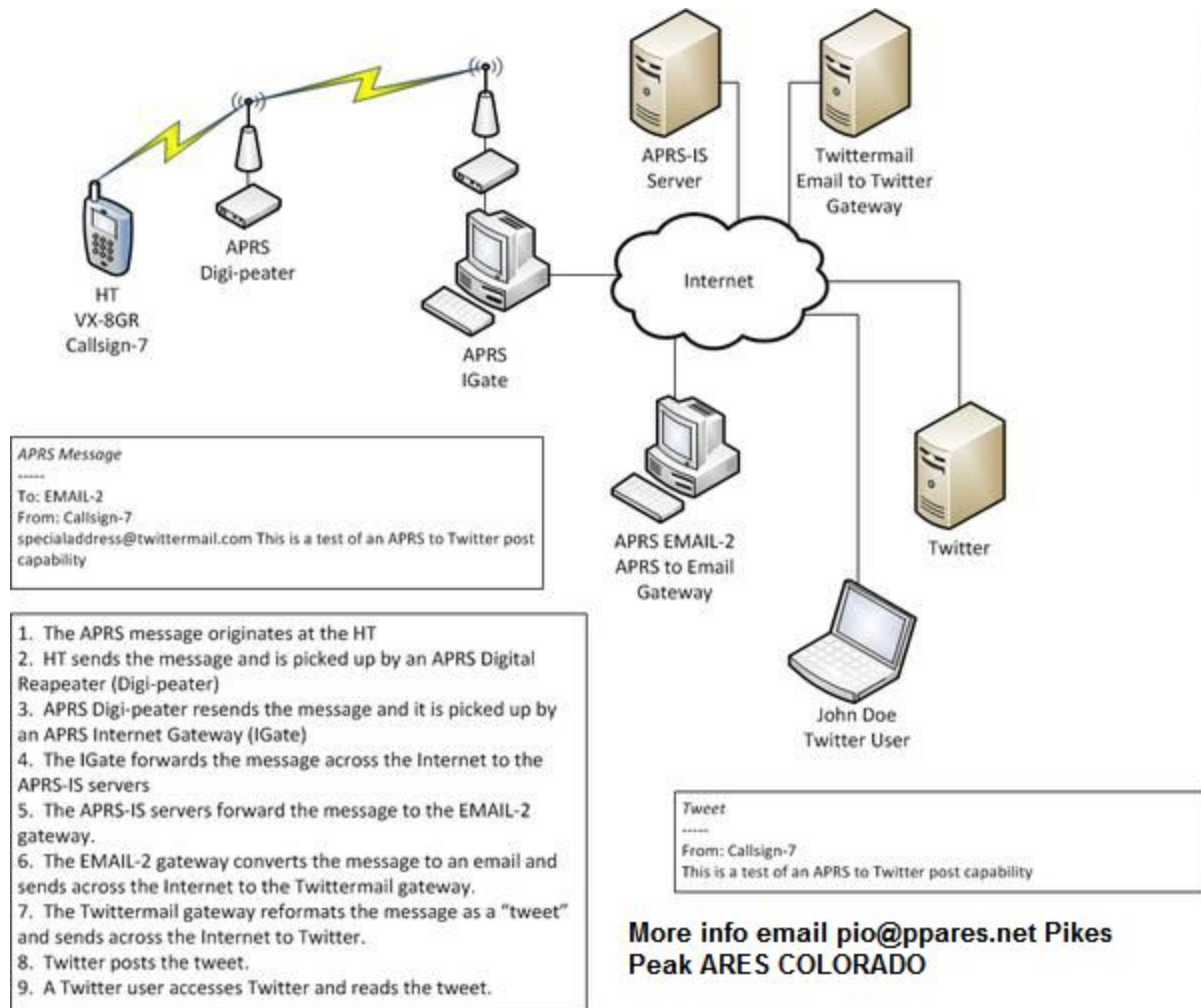
ARES Forms

<https://drive.google.com/folderview?id=0B0F6vDEDVKx6RmgwWTR1ZjFCZUU&usp=sharing&tid=0B0F6vDEDVKx6fjhVjFkR0kyZDRFb29QRHdlSEdzMnEyaTFQcy13V2JldHdKR1laS3VWTzQ>

WA EMD FORMS

<https://drive.google.com/folderview?id=0B0F6vDEDVKx6fjhVjFkR0kyZDRFb29QRHdlSEdzMnEyaTFQcy13V2JldHdKR1laS3VWTzQ&usp=sharing>

Last Revised June 30, 2020



Working with Responders: A Vital Partnership for an Effective Response to Pipeline Emergencies

<https://drive.google.com/file/d/0B7Hzx4c4bn7hUjhLMUxldEhfUk0/view?usp=sharing>

Washington Utilities Commission 404

<https://wutc.maps.aracgis.com/home/webmap/viewer.html?webmap>

National Pipeline Mapping System

<https://www.npms.phmsa.dot.gov/>

Shared Documents - Running List
Michelle Zenner @gyptzy Twitter
#CERT #PrepareAthon #CascadiaEQ #smem

FEMA IS COURSE LIST <http://tinyurl.com/kg7for-training>

ARES Forms

<https://drive.google.com/folderview?id=0B0F6vDEDVKx6RmgwWTR1ZjFCZUu&usp=sharing&tid=0B0F6vDEDVKx6fjhxVjFkR0kyZDRFb29QRHdlSEdzMnEyaTFQcy13V2UjdHdKR1laS3VWTzQ>

WA EMD FORMS

<https://drive.google.com/folderview?id=0B0F6vDEDVKx6fjhxVjFkR0kyZDRFb29QRHdlSEdzMnEyaTFQcy13V2UjdHdKR1laS3VWTzQ&usp=sharing>

Last Revised June 30, 2020

Red Cross Shelter Operations - tool kits, manuals, Instructor guide

<https://drive.google.com/folderview?id=0B7Hxz4c4bn7hNjhgR3Bqc0FjSW8&usp=sharing>

ARRL Memorandums of Understanding ARES/ARRL

https://drive.google.com/folderview?id=0B7Hxz4c4bn7hflpkXzJDdUV4UnEtb2FIX0IXSDNQSXB2aW45QUNRRIVsWE9NSmQzTXBHQ3c&usp=drive_web

RACN - Roy Area Communications Net

<https://drive.google.com/file/d/0B7Hxz4c4bn7hX3NCMDItVmZ6SjlrRmxVvWlaOEpyRTdsU01Z/view>

Situational Intelligence - The missing link in Emergency Notification

<https://drive.google.com/file/d/0B0F6vDEDVKx6MHV5NmdueVd4WFE/view?usp=sharing>

Guidelines for Evaluation of Visible Emissions 1975

<https://drive.google.com/file/d/0B0F6vDEDVKx6X0ROeHZieE9qZkk/view?usp=sharing>

Enquiring Minds: Early Detection of Rumors in Social Media from Enquiry Posts

Zhe Zhao Department of EECS University of Michigan zhezha@umich.edu

Paul Resnick School of Information University of Michigan presnick@umich.edu

Qiaozhu Mei School of Information University of Michigan qmei@umich.edu

<https://drive.google.com/file/d/0B0F6vDEDVKx6dDFtGF0ek4tNDQ/view?usp=sharing>

Social Media and Emergency Management Link Resources #smem #Vost #NDPTC h/t @sct_r

<http://t.co/mfwhjXL8v8>

Improve your Community's Awareness and Reporting of Suspicious Activity

<https://drive.google.com/file/d/0B0F6vDEDVKx6LWFwMHPzWmtrZkU/view?usp=sharing>

Resource Guide for Enhancing Community Relationships and Protecting Privacy & Constitutional Rights -- COPS -- BJA

<https://drive.google.com/file/d/0B0F6vDEDVKx6aEdQQ200eEtkb2M/view?usp=sharing>

COPS Learning Portal

<http://cops.igpa.uillinois.edu/courses>

Shared Documents - Running List
Michelle Zenner @gyptzy Twitter
#CERT #PrepareAthon #CascadiaEQ #smem

FEMA IS COURSE LIST <http://tinyurl.com/kg7for-training>

ARES Forms

<https://drive.google.com/folderview?id=0B0F6vDEDVKx6RmgwWTR1ZjFCZUU&usp=sharing&tid=0B0F6vDEDVKx6fjhXVjFkR0kyZDRFb29QRHdlSEdzMnEyaTFQcy13V2JdHdKR1JaS3VWTzQ>

WA EMD FORMS

<https://drive.google.com/folderview?id=0B0F6vDEDVKx6fjhXVjFkR0kyZDRFb29QRHdlSEdzMnEyaTFQcy13V2JdHdKR1JaS3VWTzQ&usp=sharing>

Last Revised June 30, 2020

Tweak the Tweet: Leveraging Microblogging Proliferation with a Prescriptive Syntax to Support Citizen Reporting

<https://drive.google.com/file/d/0B0F6vDEDVKx6RkVPS0N4QldxbHc/view?usp=sharing>

"Voluntweeters": Self-Organizing by Digital Volunteers in Times of Crisis

<https://docs.google.com/file/d/0B0F6vDEDVKx6OXJwZnA1WEFHwK0/edit>

Managing Spontaneous Volunteers

<https://drive.google.com/file/d/0B0F6vDEDVKx6THh5YkNFNFNKWUk/view?usp=sharing>

Volunteer and Donations Management

<https://drive.google.com/file/d/0B0F6vDEDVKx6SzE4bDE0NzZGZmc/view?usp=sharing>

National Volunteer Organizations Active in Disaster - POC Donations Management

<https://drive.google.com/file/d/0B0F6vDEDVKx6SmpHQ19oVEktYm8/view?usp=sharing>

Puget Sound Region WA EMD - Volunteer and Donations Management Tool Kit
Island, King, Kitsap, Mason, Pierce, Skagit, Snohomish, and Thurston counties

<https://drive.google.com/file/d/0B0F6vDEDVKx6cjZ3VHRmNjFLV1E/view>

Pierce County - Annex 6 - Volunteer and Donation Management 2014

<https://drive.google.com/file/d/0B0F6vDEDVKx6VmxPckxibFdWLW8/view?usp=sharing>

Social Media Verification Tools

<https://drive.google.com/file/d/0B0F6vDEDVKx6LVNaY0hadkFuNk0/view?usp=sharing>

Effective Use and Management of Unaffiliated Volunteers

<https://docs.google.com/file/d/0B0F6vDEDVKx6MHUwMINUMnBxcU0/edit>

Puget Sound Region - Resource Management Logistics Tool Kit

Island King Kitsap Pierce Thurston Skagit Snohomish Mason

<https://drive.google.com/file/d/0B0F6vDEDVKx6Q05kN0IIN0gzcXM/view?usp=sharing>

Verification Handbook

<https://drive.google.com/file/d/0B0F6vDEDVKx6eWpqQkxhQjVvM0E/view?usp=sharing>

Shared Documents - Running List
Michelle Zenner @gyptzy Twitter
#CERT #PrepareAthon #CascadiaEQ #smem

FEMA IS COURSE LIST <http://tinyurl.com/kg7for-training>

ARES Forms

<https://drive.google.com/folderview?id=0B0F6vDEDVKx6RmgwWTR1ZjFCZUU&usp=sharing&tid=0B0F6vDEDVKx6fjhxVjFkR0kyZDRFb29QRHdlSEdzMnEyaTFQcy13V2JdHdKR1JaS3VWTzQ>

WA EMD FORMS

<https://drive.google.com/folderview?id=0B0F6vDEDVKx6fjhxVjFkR0kyZDRFb29QRHdlSEdzMnEyaTFQcy13V2JdHdKR1JaS3VWTzQ&usp=sharing>

Last Revised June 30, 2020

Red Cross Shelter Management

https://drive.google.com/folderview?id=0B7Hxz4c4bn7hNjhgR3Bqc0FjSW8&usp=drive_web

Functional Needs - Shelters

<https://drive.google.com/folderview?id=0B0F6vDEDVKx6WUVfNkVIWDZNZGM&usp=sharing>

From Forest Fires to Hurricane Katrina: Case Studies of Incident Command Systems

<https://drive.google.com/file/d/0B0F6vDEDVKx6SWs2eU9kM1hzcWs/view?usp=sharing>

Occupational Safety & Health Administration - Incident Command System

<https://www.osha.gov/SLTC/etools/ics/index.html>

Simplified Guide to Incident Command - Federal Highway Administration

http://ops.fhwa.dot.gov/publications/ics_guide/ics_guide.pdf

IEEE Intelligent Systems: Using Social Media to Enhance Emergency Situation Awareness - Jie Yin ICT Centre, Andrew Lampert, Planatir Technologies, Mark Cameron, Bella Robinson, and Robert Power, CSIRO ICT Centre - December 2012 (Australia)

https://delvalle.bphc.org/pluginfile.php/13922/mod_resource/content/2/YIN-IS2012.pdf

<https://drive.google.com/file/d/0B0F6vDEDVKx6MmdRN3o3SHJDMkE/view?usp=sharing>

C. Fugate, Five Years Later: An Assessment of the Post Katrina Emergency Management Reform Act, tech. report, US Federal Emergency Management Agency, Oct. 2011.

<https://drive.google.com/file/d/0B0F6vDEDVKx6cUo2MFdHYXQxR1k/view?usp=sharing>

971 fire stations in the disaster zone. #CascadiaRising #QuakeSmart



Michelle @MsZenner · 24h

#CERT #hamradio #CascadiaRising
#CascadiaEQ #PrepperTalk #NVOAD

QuakeSmart @quakesmart

#FEMA Hazus modeling shows more than 971 fire stations in WA #EQ and #Tsunami risk area. Be prepared to shelter in place following #eq.

Thurston County landslide warning 2015 January

Shared Documents - Running List
Michelle Zenner @gyptzy Twitter
#CERT #PrepareAthon #CascadiaEQ #smem

FEMA IS COURSE LIST <http://tinyurl.com/kg7for-training>

ARES Forms

<https://drive.google.com/folderview?id=0B0F6vDEDVKx6RmgwWTR1ZjFCZUU&usp=sharing&tid=0B0F6vDEDVKx6fjhxVjFkR0kyZDRFb29QRHdlSEdzMnEyaTFQcy13V2JdHdKR1JaS3VWTzQ>

WA EMD FORMS

<https://drive.google.com/folderview?id=0B0F6vDEDVKx6fjhxVjFkR0kyZDRFb29QRHdlSEdzMnEyaTFQcy13V2JdHdKR1JaS3VWTzQ&usp=sharing>

Last Revised June 30, 2020

<https://drive.google.com/file/d/0B0F6vDEDVKx6QVJLLWdzNnl2S3M/view?usp=sharing>

Wildfire Fact Sheet - WA EMD

<https://drive.google.com/file/d/0B0F6vDEDVKx6cVo3LVh4SFpmTE0/view?usp=sharing>

Wildfire Awareness Prevention and Training

<https://drive.google.com/folderview?id=0B0F6vDEDVKx6fmtJaUtqMHZjZFh2c3ZDMXY1VWJZZF9pT3Y1ZTNsUV96a1dFWIFRTF9tZ2s&usp=sharing>

Culture Card - American Indian and Alaskan Native - A guide to build cultural awareness

<https://drive.google.com/file/d/0B0F6vDEDVKx6Ym1jSG16WmppbzQ/view?usp=sharing>

Tribal Multi-Hazard Planning Mitigation Guidance

<https://drive.google.com/file/d/0B0F6vDEDVKx6aTlvZDVTR3R1OUk/view?usp=sharing>

Awareness Training - Homeland Security - Human Trafficking

<http://www.dhs.gov/blue-campaign/awareness-training>

Social Media and Illinois Coal City Braidwood EF3 Tornado June 2015

<https://drive.google.com/file/d/0B7Hzx4c4bn7hZHJ0VHMtTWxpdTA/view?usp=sharing>

Human Trafficking 101

<https://drive.google.com/file/d/0B7Hzx4c4bn7haGEwVmFPT29ONkk/view?usp=sharing>

HSEEP - 2013 Homeland Security Exercise and Evaluation Program

<https://drive.google.com/file/d/0B7Hzx4c4bn7hUUtDNDhXR2diWXc/view?usp=sharing>

WA EMD HSEEP Policy - June 2014

<https://drive.google.com/file/d/0B7Hzx4c4bn7hcU1ZUTR2cWc4NHM/view?usp=sharing>

AAR/IP

<https://drive.google.com/file/d/0B7Hzx4c4bn7hLTFLOVh2UTRGSGM/view?usp=sharing>

<https://drive.google.com/file/d/0B7Hzx4c4bn7hRGJEbmFFUFhZX2M/view?usp=sharing>

NRP JFO Activation and Operations - Interagency Integrated SOP v8.3 April 2006

<https://drive.google.com/file/d/0B7Hzx4c4bn7hSWIiWGVVRQVdrNFk/view?usp=sharing>

Shared Documents - Running List
Michelle Zenner @gyptzy Twitter
#CERT #PrepareAthon #CascadiaEQ #smem

FEMA IS COURSE LIST <http://tinyurl.com/kg7for-training>

ARES Forms

<https://drive.google.com/folderview?id=0B0F6vDEDVKx6RmgwWTR1ZjFCZUU&usp=sharing&tid=0B0F6vDEDVKx6fjhxVjFkR0kyZDRFb29QRHdlSEdzMnEyaTFQcy13V2UjJdHdKR1laS3VWTzQ>

WA EMD FORMS

<https://drive.google.com/folderview?id=0B0F6vDEDVKx6fjhxVjFkR0kyZDRFb29QRHdlSEdzMnEyaTFQcy13V2UjJdHdKR1laS3VWTzQ&usp=sharing>

Last Revised June 30, 2020

2015 ARRL FIELD DAY

<https://drive.google.com/file/d/0B0F6vDEDVKx6Rm9ZdE5qUFUzekU/view?usp=sharing>

Lightning Safety

<https://drive.google.com/file/d/0B0F6vDEDVKx6UjllS3d4VTdORUU/view?usp=sharing>

If You Fly We Cant

<http://www.fs.usda.gov/detail/okawen/alerts-notice/?cid=stelprd3839819>



Challenges of Managing Animals in Disaster March 2015

<https://drive.google.com/file/d/0B0F6vDEDVKx6WldIN2Nib2RSY1U/view?usp=sharing>

Shelter in Place Graphic

<https://drive.google.com/file/d/0B0F6vDEDVKx6WVNPV16OUFJQW8/view?usp=sharing>

Shared Documents - Running List
Michelle Zenner @gyptzy Twitter
#CERT #PrepareAthon #CascadiaEQ #smem

FEMA IS COURSE LIST <http://tinyurl.com/kg7for-training>

ARES Forms

<https://drive.google.com/folderview?id=0B0F6vDEDVKx6RmgwWTR1ZjFCZUU&usp=sharing&tid=0B0F6vDEDVKx6fjhxVjFkR0kyZDRFb29QRHdlSEdzMnEyaTFQocy13V2UdHdKR1laS3VWTzQ>

WA EMD FORMS

<https://drive.google.com/folderview?id=0B0F6vDEDVKx6fjhxVjFkR0kyZDRFb29QRHdlSEdzMnEyaTFQocy13V2UdHdKR1laS3VWTzQ&usp=sharing>

Last Revised June 30, 2020

Com Guides - COML/AUXCOM/COMU and NIFOG

<https://drive.google.com/open?id=0B0F6vDEDVKx6fIFRsk5Jc096eWJmbUY1M1ptbndRZ2hycWM4aTBVYV0VPX0FDOWJZNkxYQIE>

Multilingual Translation Technology for IPAWS Alerts

Transcript Webinar:

<https://drive.google.com/file/d/0B0F6vDEDVKx6MGRQcDc2Z2ExNGc/view?usp=sharing>

Alert and Warning Beyond English

<https://drive.google.com/file/d/0B0F6vDEDVKx6TIBVbUZnUmc5MmM/view?usp=sharing>

Globe NASA training

<https://drive.google.com/folderview?id=1FPhUZ0uKf1uEJARwyjvBqNdMIXeQ6Zc9>

Tourniquet Myths

<https://drive.google.com/file/d/1fPBhjZpzFiY0yk0ax4vzUYhgdU5VEmwG/view?usp=drivesdk>

MCI joint drill West Thurston Fire Tumwater Fire McClane Black Lake Fire National Guard Camp Murray Medical unit Washington State Healthcare Authority ERT

<https://drive.google.com/file/d/17t4fD60eWhzEdvXwzH0Zzj5tRWngvyFt/view?usp=drivesdk>

Disaster Emergency Management Podcasts

<https://drive.google.com/file/d/1VPXiLU4Qbr4EgCOt7aV0vhRRNkc4PNJ-/view?usp=drivesdk>

2015 Seattle Police social media policy

<https://drive.google.com/file/d/14k2NFglw44Jy9f4dYJ6n3jclUj2FHy0A/view?usp=drivesdk>

DHS Order 13780 January 2018 Protecting the Nation From Foreign Terrorist Entry Into the United States

<https://drive.google.com/file/d/1NmrXyXfk-I98wZDbD8OG9Mw9TNux7tkA/view?usp=drivesdk>

Guide to LTE Security

<https://drive.google.com/file/d/1kckqq3jvR0wTG6nIADNyn2efDcR13PjT/view?usp=drivesdk>

FEMA Strategic Plan 2018-2022

https://drive.google.com/file/d/1uPipBnBtCony_zXZliasc983m3z-wSh3/view?usp=drivesdk

VOST Europe

https://drive.google.com/file/d/12_O3tx4tCIC-vWz5fBnmFI7JdV0hMHGp/view?usp=drivesdk

Shared Documents - Running List
Michelle Zenner @gyptzy Twitter
#CERT #PrepareAthon #CascadiaEQ #smem

FEMA IS COURSE LIST <http://tinyurl.com/kg7for-training>

ARES Forms

<https://drive.google.com/folderview?id=0B0F6vDEDVKx6RmgwWTR1ZjFCZUU&usp=sharing&tid=0B0F6vDEDVKx6fjhxVjFkR0kyZDRFb29QRHdlSEdzMnEyaTFOcy13V2JdHdKR1laS3VWTzQ>

WA EMD FORMS

<https://drive.google.com/folderview?id=0B0F6vDEDVKx6fjhxVjFkR0kyZDRFb29QRHdlSEdzMnEyaTFOcy13V2JdHdKR1laS3VWTzQ&usp=sharing>

Last Revised June 30, 2020

Dept of Education sm policy

<https://drive.google.com/file/d/1nBVIY8p6Hyg7Xx8F-72O5O1HaCQozyBa/view?usp=drivesdk>

2017 impact of disaster on agriculture & food

<https://drive.google.com/file/d/1ZNSI8GHT0GFIWNw9nNM8IOT29dNJvIKT/view?usp=drivesdk>

Next Generation First Responder Integration Handbook

Jan 2018

<https://drive.google.com/file/d/1oNuBL60y19leoV1iPj9p3nV96rOwkyw6/view?usp=drivesdk>

Caribe Wave Tsunami EX 2017

<https://drive.google.com/file/d/0B0F6vDEDVKx6QXMzUk9jeHJuX28/view?usp=drivesdk>

Bee Decline

<https://drive.google.com/folderview?id=1cvOyipInadPfMkLZM3fa22YqmbggJ9VD>

Multiple Casualty Events

https://drive.google.com/folderview?id=1m086O5Z75Bc0h4UvTuT06bdT34s7_P94

City Safety Conferences WA

https://drive.google.com/folderview?id=1_WBe1BcMwhlpxp6ZozJQQVjOeoLG29m6

Shared Documents - Running List
 Michelle Zenner @gyptzy Twitter
 #CERT #PrepareAthon #CascadiaEQ #smem

FEMA IS COURSE LIST <http://tinyurl.com/kg7for-training>

ARES Forms

<https://drive.google.com/folderview?id=0B0F6vDEDVKx6RmgwWTR1ZjFCZUUU&usp=sharing&tid=0B0F6vDEDVKx6fjhVjFkR0kyZDRFb29QRHdlSEdzMnEyaTF0cy13V2UjdHdKR1laS3VWTzQ>

WA EMD FORMS

<https://drive.google.com/folderview?id=0B0F6vDEDVKx6fjhVjFkR0kyZDRFb29QRHdlSEdzMnEyaTF0cy13V2UjdHdKR1laS3VWTzQ&usp=sharing>

Last Revised June 30, 2020



Washington State Members of National Volunteer Organizations Active in Disaster

Adventist Community Services	www.washingtonconference.org
American Red Cross	www.redcross.org
Church of Jesus Christ of Latter-day Saints	www.lds.org
Church of Scientology Disaster Response	www.volunteermasters.org
Church of the Brethren	www.brethren.org
Episcopal Relief & Development	www.erd.org
Food lifeline	www.foodlifeline.org
Green Cross Academy	www.greencross.org
Habitat for Humanity of Washington State	www.habitat.org
HOPE Animal Assisted Crisis Response	www.hopeaacr.org
Humane Society of the United States	www.humanesociety.org
Jewish Federation of Greater Seattle	www.jewishinseattle.org
Mennonite Disaster Service	www.mds.mennonite.net
Northwest Harvest	www.northwestharvest.org
Presbyterian Disaster Assistance	www.pcusa.org
Society of St. Vincent de Paul	www.mds.mennonite.net
The Salvation Army	www.usw.salvationarmy.org
United Church of Christ	www.ucc.org
United Methodist Disaster Response	www.gbqm-umc.org/lumcor
WA State Animal Response Team	www.washingtonsart.org
Washington Community Chaplain Corps	www.wc3chaplains.org
World Renew	www.worldrenew.net



Memorandums of Understanding
<http://www.arrl.org/served-agencies-and-partners>

