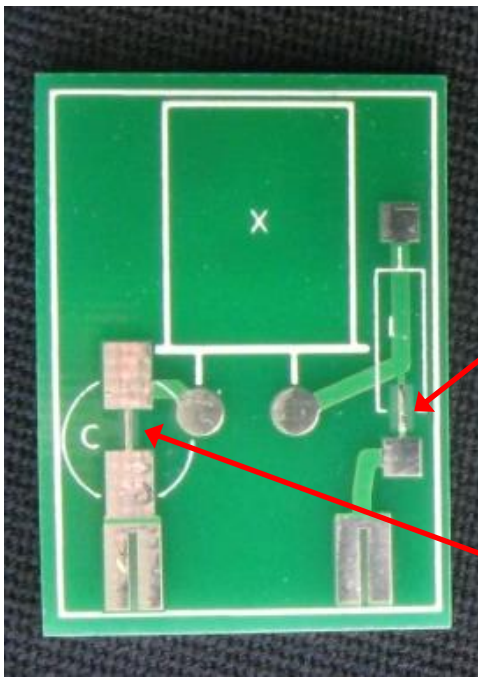


An Printed Circuit Board Adapter for FT-243 or FT-241A Crystal sockets

n5ib@juno.com

Miniature crystals, such as HC-49 or HC49S can be used with vintage radios equipped with FT-243 crystal sockets. Pins may be made from 3/32" brass rod or tubing (available at Hobby Lobby or hardware stores) or AWG 10 solid copper wire. A space is provided on the silkscreen to write in the crystal frequency, in kc !

These adapter PC boards allow for a series trimmer capacitor and/or a series inductor to be added. A series C will raise the frequency. A series L will lower it. If both are used a wider adjustment range can be realized. The crystal is installed in the same manner as without the added C or L, but if either the capacitor or inductor are to be added, the associated trace(s) must be cut. The solder mask has been removed above those traces for better visibility.



**CUT THIS TRACE
IF L IS ADDED**

**CUT THIS TRACE
IF C IS ADDED**

