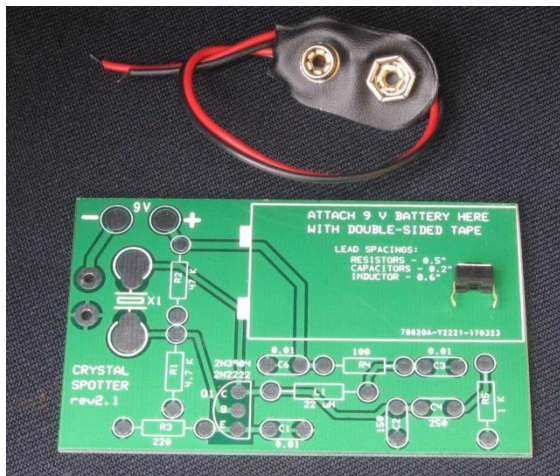


Bill of Materials

- R1 4.7 K, ¼ W, 5%
- R2 47 K, ¼ W, 5%
- R3 220 Ω, ¼ W, 5%
- R4 100 Ω, ¼ W, 5%
- R5 1 K, ¼ W, 5%
- C1,C3 0.01 μF ceramic
- C2 0.1 μF or 0.01 uF ceramic
- C4 250 pF ceramic
- L1 22 μH choke
- Q1 2N2222 or 2N3904
- SW1 SPST momentary PB 9 V alkaline battery 9 V battery clip/leads double sided tape PC board Hobby Lobby box



SW1 is mounted on the bottom of the PCB. All other parts are mounted “Pittsburg-style” on the top. Use double sided tape to attach the 9 V battery.

The board will fit inside the SKU # 299743S tiny wood box from Hobby Lobby.

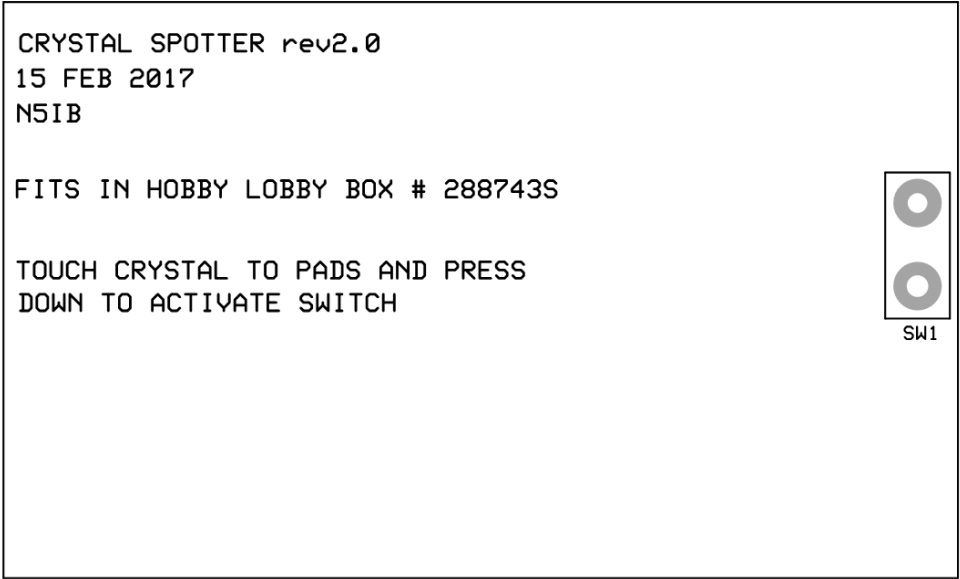
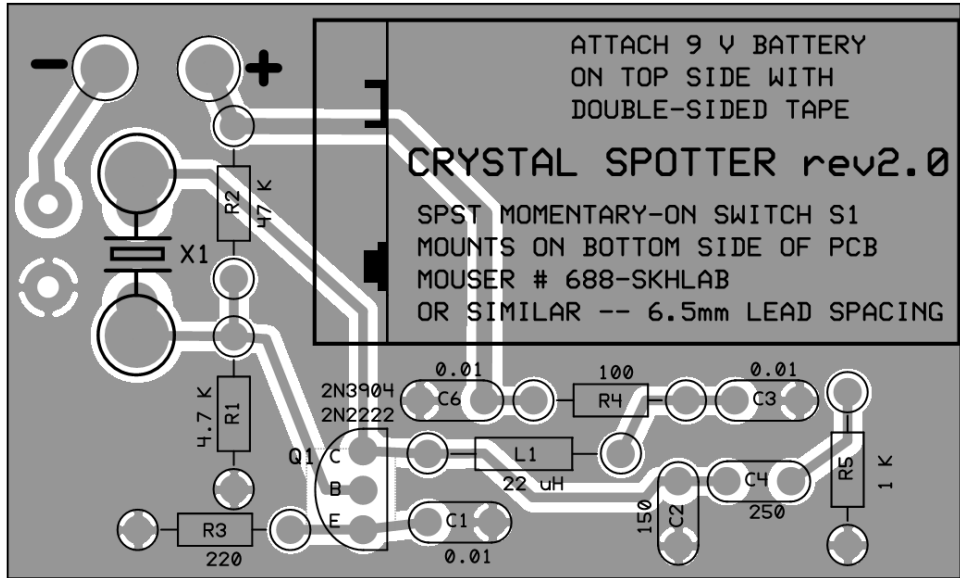
To operate: touch crystal pins to the large pads and press down to activate the switch. Current drain is about

10 mA. With only momentary use the battery should last its shelf life.



Contact: n5ib@juno.com

Enlarged views of top and bottom below,
 note Hobby Lobby SKU# on PCB is incorrect,
 Should be # 299743S:



ACTUAL SIZE (2.950 x 1.775 inches) ETCHING PATTERNS
 TOP COPPER
 NON-INVERTED

