

# INCIDENT BRIEFING (ICS 201)

**1. Event Name:**  
NF4CA Field Day 2026

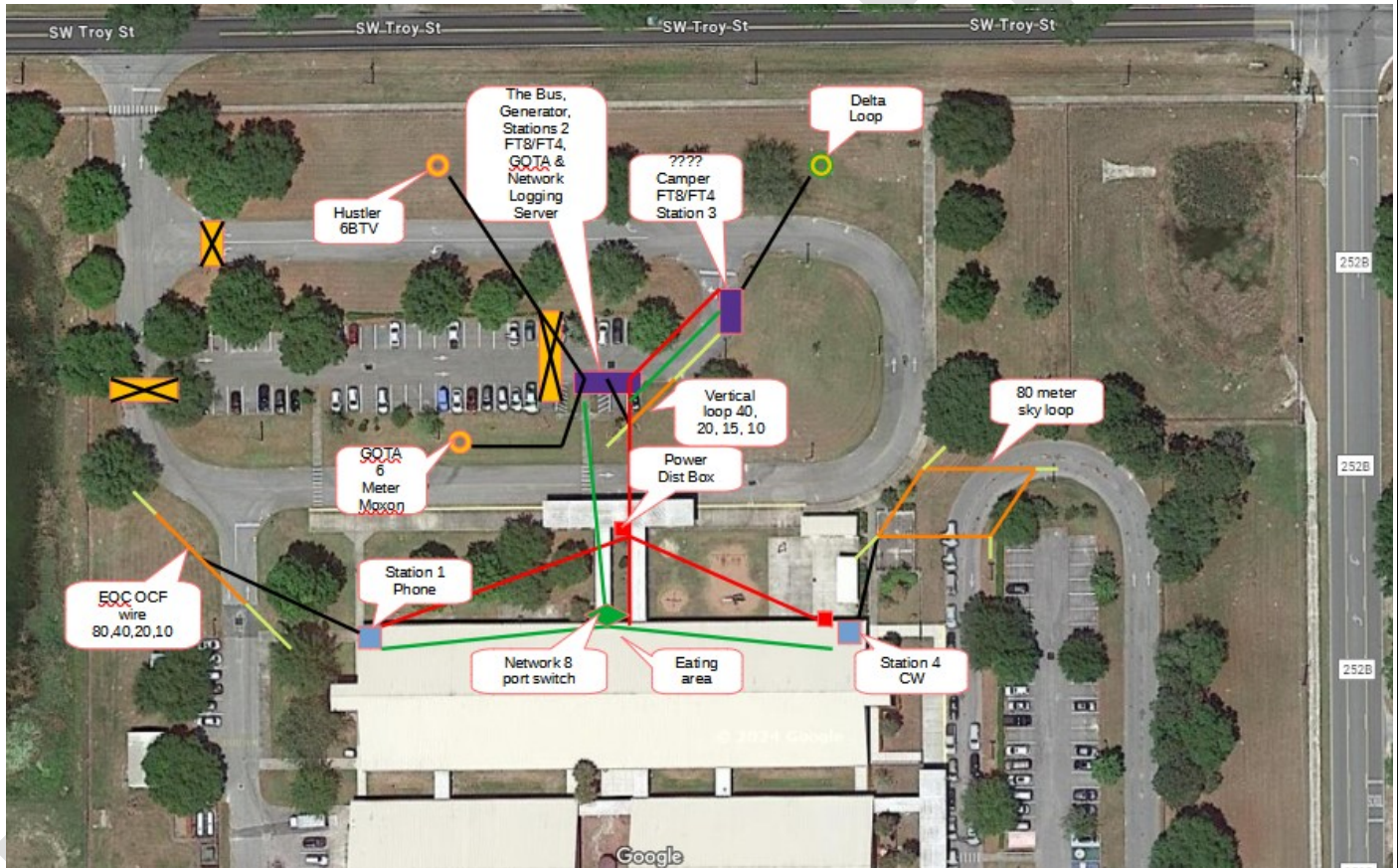
**2. Event Number:**  
001

**3. Date/Time Initiated:**  
Date: 6/26/26 Time: 1700

**4. Map/Sketch** (include sketch, showing the total area of operations, the incident site/area, impacted and threatened areas, overflight results, trajectories, impacted shorelines, or other graphics depicting situational status and resource assignment):

Our Field Day this year, June 26-28, 2026 will be at Westside Elementary School in Lake City (<https://maps.app.goo.gl/P3yipFdXcVsmtVgf9>)

Field Day rules say that all antennas must be contained within a 1000ft diameter circle. Antenna placement is critical and the planning team has done their best to optimize placement.



- **Red lines** are electrical lines
- **Orange lines** are wire antennas
- **Yellow lines** are the support ropes.
- **Black lines** are coax.
- **Green lines** are network cables.
- **Yellow circles** are vertical antennas
- **Blue squares** are stations
- **Purple rectangles** are the bus and camper with stations in them.
- **Gold squares** with black X's are barricades to restrict vehicle traffic.

**5. Situation Summary and Health and Safety Briefing** (for briefings or transfer of command): Recognize potential incident Health and Safety Hazards and develop necessary measures (remove hazard, provide personal protective equipment, warn people of the hazard) to protect responders from those hazards.

## INCIDENT BRIEFING (ICS 201)

### Field Day Executive Summary

Who:	Columbia County ARES is planning and participating in this event. Participation is <b>not</b> limited to ARES members. <b>All local amateur operators are invited to attend and operate. Non-licensed members of the general public are also welcome and encouraged to come during visitor hours to learn more about amateur radio and to try getting on the air!</b>
What:	ARRL Field Day is the most popular annual amateur radio exercise in the US and Canada. Part emergency communication preparedness, part social gathering, and part contest—Field Day attracts over 31,000 operators to set up portable stations in public areas, often using backup power, to make as many contacts as possible with other stations.
Where:	West Side Elementary School in Lake City, FL
Why:	Field Day is primarily an emergency communications training exercise. It tests the abilities of amateur radio operators to set up stations in remote, non-optimal conditions and operate without relying on commercial power, simulating disaster scenarios.
When:	June 27-28, 2026 (Field Day is always the fourth full weekend in June.)

#### Schedule Overview:

Day / Time (EDT / UTC-4)	Activity
<b>Friday, June 26</b>	Major equipment arrives, and onsite setup begins.
1700	We will need lots of helping hands and someone to stay with the equipment overnight
<b>Saturday, June 27</b>	All hands on deck to finish setup and perform function checks
0800	
1100 - 1300	Break for lunch—on your own. Coordinate so at least 2 people remain with the equipment at all times.
1400	Field Day officially begins. Time to make contacts!
1400 - 1600	Visitors from the general public are welcome during this time!
1830 - 1930	Dinner will be cooked and provided on site
19:30 - 0730	The fun continues all night long! Stay and operate as long as you wish, operate in shifts, take breaks/nap/camp out as needed.
<b>Sunday, June 28</b>	Breakfast will be cooked and provided on site
0730 - 0830	
0830 - 1000	Home stretch - make those last contacts!
1000 - 1400	Tear down, clean up, pack up, hotwash discussion, go home and rest!
1659	Field Day officially ends at 2059 UTC. No contacts can be counted after this time. We generally get tired and go home long before this...

## INCIDENT BRIEFING (ICS 201)

### Stations Overview

Station #1	<b>PHONE</b> - Using OCF wire antenna raised about 40 ft. Use up to 100W output. Power: Batteries/Solar
Station #2	<b>Digital: FT8/FT4, PSK31 etc.</b> - Using 80M OCF, Use up to 100W output Power: Generator/Battery
Station #3	<b>CW</b> - Using 40M Loop. Use up to 100W output. Power: Batteries/Solar
GOTA / PIO Station	Using 40M EFHW. Power: Battery
VHF Station	One “free” VHF station is allowed. 6M phone, digital and data station. Can do the radiograms required for bonus points. Connect to N5CBP-10 or KN4YGT-10 on 145.070, or VaraFM to NF4CA-10 on 144.990 Power: Generator, Batteries

### Operations Overview

Call Sign	<b>NF4CA</b> (Columbia ARES Call) Use this call sign for all non-GOTA contacts - <b>not your own call sign</b> . For the <b>GOTA station only</b> , <b>NF4CQ</b> should be used.
Exchange	<b>3A NFL (3 Alpha, North Florida)</b> This exchange includes our class and ARRL section. ***This information must be exchanged for the contact to count.***
Class	<b>3A</b> - We are class 3A because we have 3 HF transmitters operating simultaneously and are operating as a club, portable.
Bands and Modes	<b>Bands:</b> 160-, 80-, 40-, 20-, 15- and 10-meter HF bands, as well as all bands 50 MHz and above  <b>Modes:</b> SSB Phone, CW, and Digital (FT8, FT4, RTTY, etc.)  Try to make contacts on as many combinations of bands and modes as possible! <b>Only one band per mode is allowed at a time</b> . Do NOT change bands without clearing it with Operations Chief.  See band time of day sheet and recommended frequencies FAQ.
Documentation	All bonus point photo documentation goes to Documentation Email (see below)

# INCIDENT BRIEFING (ICS 201)

## Personnel Overview

Planning	Defines SMART Objectives and Strategies to achieve those Objectives
Logistics	Prepares and supervises all equipment to be brought to/from site.
Operations	Supervises all functions of running the operation.
Finance & Accounting	Supervises documentation for submission to ARRL.
PIO/GOTA	(Public Information Officer/Get On The Air) Station available for non-hams during visiting hours

## Safety Considerations

<b>Hydration</b>	Drink plenty of water—plain or with something like Liquid-IV.
<b>Sun</b>	Avoid sunburn and over-heating. Use sunscreen, cover, hats, and drink lots of fluids.
<b>Restrooms</b>	We are being allowed to use the restroom in the pass-through area at the school.
<b>Over Stress Injuries</b>	This is a FUN event. Plan ahead and limit your efforts on the day of the event to what is SAFE for your body!! Don't hesitate to "take a break."
<b>Fire / Explosion / Electricity</b>	Fire Extinguishers near generators / fuel. Exercise great care with fuel. Exercise great care with electrical cables.
<b>Security</b>	Gate will be closed and dummy locked at night. Lock vehicles if not attended. Avoid leaving valuables out in sight.

**6. Prepared by:** Name: D.B.Swartz, D. Vickers

Position/Title: planning\_\_

Signature:

# INCIDENT BRIEFING (ICS 201)

## 7. Current and Planned Objectives:

1. Ensure safety for all participants and guests.
2. Have fun and learn to operate different bands and modes in the field.
3. Increase our contact points total by 20% over 2025
4. Score 1810 Bonus points
5. Leave the event location clean and secure.

**PARTICIPANT: PLEASE PRINT A COPY OF THIS AND BRING WITH YOU TO KEEP TRACK!**

### Suggested Experience Check Off

No.	Item	Checkoff	Sign off (if needed for later taskbook entry)	"Bragging Points"
1	Copy Special ARRL Field Day Bulletin	<input type="checkbox"/>		10
2	Make 5 Field Day FT8 Contacts	<input type="checkbox"/>	_____ Mentor	10
3	Make 5 Field Day FT4 Contacts	<input type="checkbox"/>	_____ Mentor	10
4	Make 5 Field Day RTTY Contacts	<input type="checkbox"/>	_____ Mentor	10
5	Make 5 Field Day SSB Contacts	<input type="checkbox"/>	_____ Mentor	10
6	Make 5 CW contacts -- OK to use FLDGI	<input type="checkbox"/>	_____ Mentor	20
7	Make a Field Day contact on 80 meters	<input type="checkbox"/>		10
8	Make a Field Day contact on 10 meters	<input type="checkbox"/>		20
9	Make a Field Day contact on 6 meters	<input type="checkbox"/>		30
10	Compose, post, and send 2 radiograms using WINLINK for Field Day bonus points	<input type="checkbox"/>	_____ Mentor	20
11	Keep log for someone for 1 hour	<input type="checkbox"/>		30
12	Set up an HF antenna and obtain SWR under 2:1 on 80 meters (tuner allowed)	<input type="checkbox"/>		20
13	Set up an HF antenna and obtain SWR under 2:1 on 40 meters (tuner allowed)	<input type="checkbox"/>		20
<b>GRAND TOTAL BRAGGING POINTS:</b>				

**6. Prepared by:** Name: D.B.Swartz, D. Vickers Position/Title: planning\_\_  
Signature: \_\_\_\_\_

## INCIDENT BRIEFING (ICS 201)

8. Current and Planned Actions, Strategies, and Tactics:	
Time	Actions
ALWAYS	<p>DOCUMENTATION EMAIL -- SEND ALL DOCUMENTATION COPIES FOR POINTS TO</p> <p style="text-align: center;"><a href="mailto:info.NF4CA@gmail.com">info.NF4CA@gmail.com</a></p> <p style="text-align: center;">THIS IS THE EMAIL ADDRESS OF THE DOCUMENTATION UNIT FOR 2026</p>
April	<ul style="list-style-type: none"> <li><input type="checkbox"/> Finalize volunteers for leadership positions</li> <li><input type="checkbox"/> Check Antennas and coax for performance. Label and set aside.</li> <li><input type="checkbox"/> Practice setting up HF antennas and alternate power, get on the air, all modes, logging</li> </ul>
6 weeks in advance and following	<ul style="list-style-type: none"> <li><input type="checkbox"/> PIO: SUGGESTIONS FROM SCOTT ROBERTS KK4ECR ARRL-NFL PIO (See his column, page 2 of NLF Section May, 2021 QST - <a href="https://arrl-nfl.org/wp-content/uploads/2022/04/00-QST-NFL-April-2022.pdf">https://arrl-nfl.org/wp-content/uploads/2022/04/00-QST-NFL-April-2022.pdf</a>)</li> </ul> <p><i>Within the next week, send out a personal invitation (not a press release) to each contact, letting them know about Field Day and inviting them to visit your Field Day site. You can attach the What is ARRL Field Day? Flier to the email.....</i></p> <p><i>A few days to a week after sending the initial invite, follow up with key media and public officials by phone or in person to extend an invitation to Field Day. (If you are going to visit in person, it does not hurt to take a box of donuts to leave for their office.)</i></p> <p><i>In early June, send a follow-up email to remind your contacts of the dates for Field Day and any special events you may have at your event that they may wish to attend. (Free food, special tours of you Field Day site, or any classes.)</i></p> <p><i>About two weeks prior to Field Day, send a press release to the news desk of all your media outlets. This will help to get your event on their calendar and when assignments are given for the weekend, your event will be one of the considered events to cover.</i></p>
4 weeks in advance	<ul style="list-style-type: none"> <li><input type="checkbox"/> OPERATIONS: Confirm networking plans -- Note: See networking with N3FJP how-to.</li> <li><input type="checkbox"/> LOGISTICS: Confirm having the emergency generators tested.</li> </ul>
3 weeks in advance	<ul style="list-style-type: none"> <li><input type="checkbox"/> OPERATIONS: Confirm latest version of logging software loaded on laptops.</li> <li><input type="checkbox"/> LOGISTICS: Confirm Power Supplies are sufficient for stations</li> <li><input type="checkbox"/> OPERATIONS: Provide additional training opportunities for use of ICOM-7300</li> </ul>
1-2 weeks in advance	<ul style="list-style-type: none"> <li><input type="checkbox"/> Antenna crews meet at Field Day Location and confirm placement of antennas and coax</li> </ul>
Sat June 20	<ul style="list-style-type: none"> <li><input type="checkbox"/> Check the HF antennas, coax, portable masts etc are packed</li> <li><input type="checkbox"/> Make sure the ropes and anchors for wire antennas are packed</li> </ul>
Week Before	<ul style="list-style-type: none"> <li><input type="checkbox"/> PIO: Send media press releases and appropriate information –</li> <li><input type="checkbox"/> Send copies of releases and/or published coverage to PLANNING SECTION for <b>BONUS POINTS</b>, to DOCUMENTATION, <a href="mailto:info.NF4CA@gmail.com">info.NF4CA@gmail.com</a></li> <li><input type="checkbox"/> PIO: Issue REMINDER invitations to ELECTED GOVERNMENT OFFICIALS (county commissioners) and SERVED AGENCY REPRESENTATIVES INCLUDING COLUMBIA COUNTY SHERIFF, FIRE CHIEF</li> <li><input type="checkbox"/> PIO: COPY DOCUMENTATION (<a href="mailto:info.NF4CA@gmail.com">info.NF4CA@gmail.com</a>) on EMAIL FOR ALL INVITATIONS FOR POINTS CREDIT.</li> <li><input type="checkbox"/> Matt Stiles &amp; Brad Swartz post outreach through SOCIAL MEDIA and <input type="checkbox"/> document with photo/screenshot to DOCUMENTATION (<a href="mailto:info.NF4CA@gmail.com">info.NF4CA@gmail.com</a>) Create a PDF if possible of the documentation and send to Documentation.</li> </ul> <p><b>RELEVANT ARRL RULE TEXT: Social Media: 100 points for promoting your Field Day activation to the general public via an active, recognized and utilized social media platform (Facebook, Twitter, Instagram, etc). This bonus is available to bona fide amateur radio clubs and Field Day groups that welcome visitors to their operation. Individual participants do not qualify for this bonus. Club websites do not qualify for this bonus. Available to all classes</b></p>

## INCIDENT BRIEFING (ICS 201)

Thursday Evening	<ul style="list-style-type: none"> <li><input type="checkbox"/> OPERATIONS: ZOOM TABLE TOP DRESS REHEARSAL -- ORGANIZED BY OPERATIONS Everyone is invited, leadership requested to attend if possible.</li> <li><input type="checkbox"/> Buy Watermelon and put on ice in cooler</li> <li><input type="checkbox"/> Review the networking plans and computers, passwords, etc.</li> </ul>
Friday Morning	<ul style="list-style-type: none"> <li><input type="checkbox"/> Sections to check out networking, logging software, computers, anything that needs to be checked out, so that there is enough time to FIX anything that needs fixing.</li> <li><input type="checkbox"/> If there is anything remaining to be done with antennas etc, will be attended to then.</li> </ul>
Friday 1700	<ul style="list-style-type: none"> <li><input type="checkbox"/> LOGISTICS: Bring assets to the Field Day site. Secure for overnight. Confirm generators are fueled.</li> <li><input type="checkbox"/> OPERATIONS: DIGITAL BULLETIN (<b>BONUS POINT</b>) OPERATIONS to coordinate having this message captured. It will be transmitted at 9 pm Eastern Friday 3.5975, 7.095, 14.095 (and more, see schedule) 45.45-baud Baudot, PSK31 in BPSK mode and MFSK16 on a daily revolving schedule. THEY DON'T ALWAYS SEND ALL VERSIONS</li> <li><input type="checkbox"/> OPERATIONS: SSB BULLETIN (<b>BONUS POINT</b>) OPERATIONS to coordinate having this message captured at 9:45 PM Eastern - 1.855, 3.990, 7.290, 14.290, 18.160, 21.390, 28.590, 50.350 and 147.555 MHz</li> <li><input type="checkbox"/> OPERATIONS Email the text of the bulletin to (<a href="mailto:info.NF4CA@gmail.com">info.NF4CA@gmail.com</a>) We have to submit the TEXT that you copied.</li> </ul>
Saturday (6/27) 0800 - 1100	<h3>SATURDAY MORNING SETUP</h3> <ul style="list-style-type: none"> <li><input type="checkbox"/> LOGISTICS is in charge of delivery of all equipment -- please keep track</li> <li><input type="checkbox"/> OPERATIONS: Setup crews Check-In Antenna Crew: Marcus Perry, Daniel Vickers, Hank White, Henry Price, Randy Hare, Jim White Power Crew: Colen Boutwell, Daniel Vickers, Randy Hare Network Crew: Randy Hare, Matt Stiles</li> <li><input type="checkbox"/> OPERATIONS: Setup crews install primary and backup antennas, feed-lines, radios, tuners, logging laptops, primary generator, solar PV and emergency back-up power, and associated equipment at Station 1, Station 2, Station 3, Station 4, GOTA and Satellite locations.</li> <li><input type="checkbox"/> OPERATIONS: Setup crew Testing: Station 1, Station 2, Station 3, Station 4, GOTA and Satellite Radio Systems for planned bands and operating modes: CW, SSB Phone, and Digital (FT-8, FT-4, other). <b>Verify that the radios, computers, logging all works.</b></li> </ul>
1100 - 1300	<h3>BREAK AND LUNCH AFTER SETUP</h3> <ul style="list-style-type: none"> <li><input type="checkbox"/> OPERATIONS: Lunch – LUNCH ON YOUR OWN —Since our equipment will be at a public school, some of us will need to remain there. Maybe we can send someone to bring back lunch.</li> <li><input type="checkbox"/> PIO: Send photos documenting PUBLIC ACCESSIBLE LOCATION for <b>Bonus Points</b>, TO (<a href="mailto:info.NF4CA@gmail.com">info.NF4CA@gmail.com</a>) Create a PDF and send to Documentation so it can be submitted.</li> <li><input type="checkbox"/> Photographer to send photos documenting PUBLIC INFORMATION TABLE (Demo Station) for <b>Bonus Points</b>, with appropriate subject line to (<a href="mailto:info.NF4CA@gmail.com">info.NF4CA@gmail.com</a>) Create a PDF and submit to Documentation so it can be submitted.</li> </ul>
1400 - 1600	<ul style="list-style-type: none"> <li><input type="checkbox"/> Invited guests and public visitor time (have handouts and demonstrations ready)</li> </ul>

# INCIDENT BRIEFING (ICS 201)

## FIELD DAY CONTACTS BY PARTICIPANTS

1400

- PARTICIPANTS:** Operators work in **pairs** whenever possible (Operator and Logger) making and logging contacts (QSOs) to other radio clubs participating in the 2026 ARRL Field Day event at Station 1, Station 2, Station 3, GOTA, VHF station and a Satellite Station.
- OPERATIONS may wish to arrange and publish a schedule of sign ups for operating.**
- We plan to use and network N3FJP logging software. Each Icom 7300 will interface with the software. You will probably need to log PSK31, and RTTY contacts using the logging computer yourself. The software will automatically log CW, SSB, FT8, and FT4.
- Keep it to three transmitters that "count" maximum at all times.** One GOTA, one VHF, and one Satellite radio are "free". Groups are allowed these dedicated stations without increasing their entry category.
- We may use cell phones, or HT's (146.430 simplex) to talk between the stations, depending on what works. You can also see what band the other station is operating on via the logging software -- be careful to set this properly!
- OPERATIONS:** Participants Check-In
- Monitor local repeaters for assisting arriving hams.

## BONUS POINT EFFORTS AND DOCUMENTATION

### SAFETY OFFICER

- SAFETY OFFICER 1:** Carry out reviews of safety techniques and fill out the Safety Check List -- write at the bottom that you carried it out and sign it, take photo, and send as PDF document to ([info.NF4CA@gmail.com](mailto:info.NF4CA@gmail.com))

THIS FORM IS ENCLOSED IN THIS PACKET BEFORE THE OFFICIAL FIELD DAY RULES.

ARRL RULE: 7.3.17 Safety Officer Bonus: A 100-point bonus may be earned by having a person serving as a Safety Officer for those groups setting up Class A stations. This person must verify that all safety concerns on the Safety Check List (found in the ARRL Field Day Packet) have been adequately met. This is an active bonus – simply designating someone as Safety Officer does not automatically earn this bonus. A statement verifying the completion of the Safety Check List must be included in the supporting documentation sent to ARRL HQ in order to claim this bonus.

Saturday (6/27)

- SAFETY OFFICER 2:** Carry out reviews Field Day Responsibilities Check List, fill out and sign the Field Day Responsibilities List. Scan or take photo of the form, and send as PDF document to ([info.NF4CA@gmail.com](mailto:info.NF4CA@gmail.com))

THIS FORM IS ENCLOSED IN THIS PACKET BEFORE THE OFFICIAL FIELD DAY RULES.

# INCIDENT BRIEFING (ICS 201)

## BONUS POINT EFFORTS AND DOCUMENTATION OPERATIONS

Saturday (6/27)

- OPERATIONS -- solar power** -- one solar power station to charge a battery, may even be in the back of pickup truck, to be used later to make contacts to get the solar power points.
- Take a photo of the solar power charging system, put it in a PDF document for proof, and send it to the DOCUMENTATION email address.
  
- OPERATIONS** to set up one or more EDUCATIONAL ACTIVITIES (**BONUS POINTS**) and document with attendance sheet and photograph sent by email to DOCUMENTATION with appropriate subject line – make it one document preferably in doc or pdf so that DOCUMENTATION can easily upload it to the ARRL.
  
- OPERATIONS** -- Document startup of **GENERATOR TO GET THE 100% EMERGENCY POWER POINTS** -- PROVE WITH PHOTO & STATEMENT -- PHOTO INSIDE PDF DOCUMENT. SENT TO DOCUMENTATION UNIT.
  
- OPERATIONS: RADIOGRAM TO SM OR SEC: [ORIGINATED BY NF4CA ] (BONUS POINTS)** OPERATIONS to perform and document (by copy of radiogram) origination of a formal message to the ARRL Section Manager or Section Emergency Coordinator by your group from its site. You should include the club name, number of participants, Field Day location, and number of ARES operators involved with your station. **The message must be transmitted during the Field Day period and a copy of it must be included in your submission in standard ARRL radiogram or no credit will be given. The message must leave or enter the Field Day operation via amateur radio RF.** Documentation by sending a copy also to **DOCUMENTATION (at the email address listed above)** . Note: these may be easiest to do on VHF digital from the “free” vhf station, USING THE VHF DATA TRANSCEIVERS FOR THAT PURPOSE. Consider using Brad's or Mike's Gateway on 145.070.
  
- OPERATIONS** TEN RADIOGRAMS SENT FROM THE FIELD DAY SITE: [ORIGINATED BY NF4CA ]  

TEXT OF ARRL RULE: BONUS POINTS **Message Handling: 10 points for each formal message originated, relayed or received and delivered during the Field Day period, up to a maximum of 100 points (ten messages). Copies of each message must be included with the Field Day report. The message to the ARRL SM or SEC under Rule 7.3.5. does not count towards the total of 10 for this bonus. Available to all Classes. All messages claimed for bonus points must leave or enter the Field Day operation via amateur radio RF.**
  
- OPERATIONS:** SEND COPIES TO DOCUMENTATION

## BONUS POINT EFFORTS AND DOCUMENTATION PIO

Saturday (6/27)

- PIO (BONUS POINTS)** is to invite at LEAST ONE ELECTED GOVERNMENT OFFICIAL and document both the invite and the visit with a FILE including a photo or written statement, send to DOCUMENTATION with an appropriate subject line. Encouraged to mentor up and coming PIO members by involving them in this process. Elected Officials include SHERIFF, CITY MAYOR AND COUNTY COMMISSIONERS, among others.
  
- PIO (BONUS POINTS)** to invite REPRESENTATIVE OF AN AGENCY served by ARES and document with copy of invitation / photo or suitable substitute in one file sent to PLANNING SECTION. AGENCIES SERVED INCLUDE EMERGENCY MANAGEMENT (e.g. Shayne Morgan).

# INCIDENT BRIEFING (ICS 201)

14:00 – 00:00	<h2 style="margin: 0;">BONUS POINT EFFORTS AND DOCUMENTATION</h2> <h3 style="margin: 0;">SATELLITE UNIT OF OPERATIONS</h3> <p><input type="checkbox"/> <b>OPERATIONS:</b> SATELLITE: BONUS POINTS Satellite QSO: 100 bonus points for successfully completing at least one QSO via an amateur radio satellite during the Field Day period. Groups are allowed one dedicated satellite transmitter station without increasing their entry category. Satellite QSOs also count for regular QSO credit. Show them listed separately on the summary sheet as a separate "band." You do not receive an additional bonus for contacting different satellites, though the additional QSOs may be counted for QSO credit unless prohibited under Rule 7.3.7.1. The QSO must be between two Earth stations through a satellite. Available to Classes A, B, and F. 7.3.7.1 Stations are limited to one (1) completed QSO on any single channel FM satellite. OPERATIONS to have this accomplished and documented by having appropriately documented <b>LOG ENTRIES</b> sent to DOCUMENTATION. The group is encouraged to make this a teaching moment!</p>
Wee Hours	<p><input type="checkbox"/> Operation in the middle of the night is at the discretion of <b>Operations</b> based on the available volunteers. We may be having so much fun that we can't stop these people! I suggest that representatives from the General Staff meet and assess operations of the stations (a) within the first few hours; (b) in the evening, to determine overnight options. (Suggestion only).</p>
Sunday (6/28) 1400	<h2 style="margin: 0;">CONCLUSION OF OUR FIELD DAY EFFORT</h2> <p><input type="checkbox"/> <b>Documentation Unit</b> gathers ALL documentation for filing. In general everything other than the logging computers should be emailed in the text or in an attachment to <b>info.NF4CA@gmail.com</b></p> <p><input type="checkbox"/> <b>OPERATIONS:</b> Tear down crew Uninstalls all radios, primary and backup antennas, feed-lines, tuners, logging laptops, (Primary Generator, Solar PV and emergency back-up) power, and associated equipment at Station 1, 2, 3, 4, GOTA, and Satellite locations.</p> <p><input type="checkbox"/> <b>OPERATIONS:</b> Tear down crew cleans area grounds and surrounding areas.</p> <p><input type="checkbox"/> <b>LOGISTICS</b> moves gear back to proper storage locations</p>
Meal After	<h2 style="margin: 0;">HOTWASH DISCUSSION / MEAL</h2> <p><input type="checkbox"/> Everyone please stay and hopefully have lunch together so we can discuss the "issues" we learned from the day. Bring your notes you made during the event.</p>
Sunday/Monday	<h2 style="margin: 0;">FIELD DAY SUBMISSION</h2> <p><input type="checkbox"/> Documentation Unit (Planning Section) files contest results with ARRL electronically</p> <p><input type="checkbox"/> Documentation Unit obtains EMAIL or CONFIRMATION of submission and forwards to Incident Commander</p> <p><input type="checkbox"/> Planning Section writes up report of operation, with input from all other sections</p>

**6. Prepared by:** Name: D.B.Swartz, D. Vickers Position/Title: Planning\_Signature: \_\_\_\_\_

# INCIDENT BRIEFING (ICS 201)

<b>1. Event Name:</b> NF4CQ Field Day 2023	<b>2. Event Number:</b>	<b>3. Date/Time Initiated:</b> Date: _____ Time: _____
<b>9. Current Organization :</b> We try to utilize ICS in order to give people HANDS-ON experience with this highly-refined system, in which we are all pretty green. (Trying to give new people chance to try out some things!!)		
* Unfilled positions are handled by the person to whom they would have reported, until stood up for function.		
<b>6. Prepared by:</b> Name: _____ Position/Title: _____ Signature: _____		
<b>ICS 201, Page 3</b>	Date/Time: _____	

## INCIDENT BRIEFING (ICS 201)

<b>1. Event Name:</b> NF4CA Field Day 2026	2. Event Number:	<b>3. Date/Time Initiated:</b> Date: Time:
---	------------------	---

10. Resource Summary:

### EQUIPMENT LIST

ELECTRICAL			
Resource	Volunteer Providing	Volunteer Transporting	ETA (Requested Arrival)
Generator 1 – 7.4 kW	Jim White	Jim White	Friday Night
Generator 2 – 5.7 kW	Matt Stiles	Matt Stiles	Friday Night
Fuel – Three 5-gallon gasoline containers	Fred Ducksworth	Fred Duscksworth	Friday Night
Fire Extinguisher 1 (for generator area)	Jim White	Jim White	Friday Night
Fire Extinguisher 2 (for fuel are)	Jim White	Jim White	Friday Night
Ground Rod / connection to generators	Colen Boutwell	????	Friday Night
120V Three wire Adapter 20 Amp	Colen Boutwell	????	Friday Night
Three wire cord, generator to dist box, 240V, 30Amp, 100Ft	Colen Boutwell	????	Friday Night
Main Distribution Panel, 240V, 20-30-Amp input, 120V, 20Amp output x2	Colen Boutwell	????	Friday Night
Power cord from Main Distribution Box to Local Distribution Box	Colen Boutwell		Friday Night
Local Distribution Panel, 120V 20Amp outlet x 2	Colen Boutwell	????	Friday Night
Extension Cord to station #1	????	????	Friday Night
Extension Cord to station #2	Brad Swartz	Brad Swartz	Friday Night
Extension Cord to station #3	Dan Vickers	Dan Vickers	Friday Night
Multiple outlet splitter	Jim White	Jim White	Friday Night

## INCIDENT BRIEFING (ICS 201)

NETWORKING / LOGGING SERVER			
Resource	Volunteer Providing	Volunteer Transporting	ETA (Requested Arrival)
Internet Hot Spot with necessary patch cables	Dan Vickers	Dan Vickers	Week Before
WIFI Linksys Home Router with power supply, Raspberry Pi	Brad Swartz	Brad Swartz	Week Before
Computer for logging software server	Brad Swartz	Brad Swartz	Week Before
UPS	Matt Stiles	Matt Stiles	Saturday
Ethernet cables, Desktop Switch	Brad Swartz	Brad Swartz	Week Before
Lighting	Jim White	Jim White	Saturday
Power Strip	Jim White	Jim White	Saturday
<b>STATION #1 All Modes</b> (Primary station for Phone)			
Resource	Volunteer Providing	Volunteer Transporting	ETA (Requested Arrival)
Main Antenna - EOC OCF wire, Coax	Brad Swartz	Brad Swartz	Saturday
ICOM 7300	Marcus Perry	Marcus Perry	Saturday
Antenna Tuner (built in radio)	Marcus Perry	Marcus Perry	Saturday
Computer with RFI free power system & Mouse	ARES	Brad Swartz	Saturday
SOFTWARE on Logging Computer: WSJT-X, Grid Tracker, N3FJP log	OPERATIONS	OPERATIONS	Week Before
Power Supply AC to 13.8V	Marcus Perry	Marcus Perry	Saturday
Solar/Battery power system	Marcus Perry	Marcus Perry	Saturday
Lighting	Marcus Perry	Marcus Perry	Saturday
Table & Chair	Marcus Perry	Marcus Perry	Saturday
Power Strip	Marcus Perry	Marcus Perry	Saturday

## INCIDENT BRIEFING (ICS 201)

<b>STATION #2 All Modes</b> (Primary station for Digital FT8, FT4, PSK31)			
<b>Resource</b>	<b>Volunteer Providing</b>	<b>Volunteer Transporting</b>	<b>ETA (Requested Arrival)</b>
Main HF Antenna 80M OCF, Coax	Brad Swartz	Brad Swartz	Saturday
ICOM 7300	Brad Swartz	Brad Swartz	Saturday
Antenna Tuner (built in radio)	Brad Swartz	Brad Swartz	Saturday
Computer with RFI free power system & Mouse	ARES	Brad Swartz	Saturday
SOFTWARE on Logging Computer: WSJT-X, Grid Tracker, N3FJP log	OPERATIONS	OPERATIONS	Week Before
Power Supply AC to 13.8V	ARES	Brad Swartz	
Battery power system	Brad Swartz???	Brad Swartz???	Saturday
Lighting	Brad Swartz	Brad Swartz	Saturday
Extra Monitor	Brad Swartz	Brad Swartz	Saturday
Table & Chair	Randy Hare	Randy Hare	Saturday
<b>STATION #3 All Modes</b> (Primary station for CW)			
<b>Resource</b>	<b>Volunteer Providing</b>	<b>Volunteer Transporting</b>	<b>ETA (Requested Arrival)</b>
Main Antenna Wire 40M Loop, Coax	Jim Taylor	Matt Stiles	Saturday
Yaesu FT-710	Dan Vickers	Dan Vickers	Saturday
Antenna Tuner - manual	Dan Vickers	Dan Vickers	
Computer with RFI free power system	Dan Vickers Dalton Weatherford	Dan Vickers Dalton Weatherford	Saturday
Mouse, keyboard	Dan Vickers	Dan Vickers	Saturday
SOFTWARE on Logging Computer: WSJT-X, Grid Tracker, N3FJP log	OPERATIONS	OPERATIONS	Week Before
Power Supply AC to 13.8V	Dan Vickers	Dan Vickers	Saturday
Keyer	Dan Vickers	Dan Vickers	Saturday
Lighting	Dan Vickers	Dan Vickers	Saturday
Table & Chair	Dan Vickers	Dan Vickers	Saturday
Headphones	Dan Vickers	Dan Vickers	Saturday

## INCIDENT BRIEFING (ICS 201)

### FREE VHF STATION

Resource	Volunteer Providing	Volunteer Transporting	ETA (Requested Arrival)
Radio	Gordon Beattie	Gordon Beattie	Saturday
VHF / UHF Antennas, Coax	Gordon Beattie	Gordon Beattie	Saturday
6M Moxon Antenna	Dan Vickers	Dan Vickers	Saturday
Computer with RFI free power system & Mouse	Gordon Beattie	Gordon Beattie	Saturday
SOFTWARE on Logging Computer: WSJT-X, Grid Tracker, N3FJP log	Gordon Beattie	Gordon Beattie	Saturday
Power Supply AC to 13.8V	Gordon Beattie	Gordon Beattie	Saturday
Battery power system	Gordon Beattie	Gordon Beattie	Saturday
Lighting	Gordon Beattie	Gordon Beattie	Saturday
Table & Chair	Gordon Beattie	Gordon Beattie	Saturday

### FREE GOTA - HF STATION

(Primary station for demonstrations, and guests, during visitor times)

Resource	Volunteer Providing	Volunteer Transporting	ETA (Requested Arrival)
Main Antenna 40M EFHW, Coax	Matt Stiles	Matt Stiles	Saturday
ICOM 7300	ARES (Jim Taylor)	Matt Stiles	Prior to Field Day weekend
Computer with RFI free power system & Mouse	ARES (Brad Swartz)	Brad Swartz	Week Before
SOFTWARE on Logging Computer: WSJT-X, Grid Tracker, N3FJP log	OPERATIONS	OPERATIONS	Week Before
Power Supply AC to 13.8V	Randy Hare	Randy Hare	Saturday
Battery power system – 50AH	Dan Vickers	Dan Vickers	Saturday
Table & Chair	Matt Stiles	Matt Stiles	Saturday

### FREE SATELLITE STATION

Resource	Volunteer Providing	Volunteer Transporting	ETA (Requested Arrival)
ICOM 5100	Hank White	Hank White	Saturday
Digirig & Cables	Brad Swartz	Brad Swartz	Saturday
Antenna Mag Mount or	Hank White	Hank White	Saturday

## INCIDENT BRIEFING (ICS 201)

Attow			
Coax	Hank White	Hank White	Saturday
Computer with software	Hank White	Hank White	Saturday

### ADDITIONAL MISCELLANEOUS EQUIPMENT

Resource	Volunteer Providing	Volunteer Transporting	ETA Requested Arrival
Portable Army Mast (1)	Brad Swartz	Brad Swartz	Saturday
Portable Army Masts (4)??	Jim Taylor	Matt Stiles	Saturday
Coax 100' x 2, 200' x 1 ??	Colen, Brad, Jim Taylor?	???	Saturday
Coax Connectors	Colen	Colen	Saturday
Backup HF Antenna(s) ??	Brad Swartz???	Brad Swartz???	Saturday
String Lighting (for walkways)	Jim White	Jim White	Saturday
Markers for wires (Pool noodles, cones, glow sticks etc.)	ARES	Colen Boutwell	Saturday
Tarps (to shield from rain)	Colen Boutwell	Colen Boutwell	Saturday

### PIO / WELCOME AREA SHELTER

(Station demo's shelter go box)

Resource	Volunteer Providing	Volunteer Transporting	ETA Requested Arrival
Registration Sheet	Brad Swartz	Brad Swartz	Saturday
Canopy(s)	LOGISTICS	Colen Boutwell	Saturday
Fans	Jim White	Jim White	Saturday
Lighting	Jim White	Jim White	Saturday
Table, Chairs to seat approximatley 12	Marcus Perry Matt Stiles	Marcus Perry Matt Stiles	Saturday
Meshcore Repeater	Jim White	Jim White	Saturday
Meshcore Companion	Jim White	Jim White	Saturday
EOC Antenna Document	Brad Swartz	Brad Swartz	Saturday
Sample Exercise Documents	Brad Swartz	Brad Swartz	Saturday
Communication Plan	Brad Swartz	Brad Swartz	Saturday

### DINING / HANGOUT AREA

Resource	Volunteer Providing	Volunteer Transporting	ETA Requested Arrival
Plates	Colen Boutwell	Colen Boutwell	Saturday

## INCIDENT BRIEFING (ICS 201)

Napkins	Colen Boutwell	Colen Boutwell	Saturday
Cups	Colen Boutwell	Colen Boutwell	Saturday
Eating Utensils	Colen Boutwell	Colen Boutwell	Saturday
Bottled Water on Ice	Marcus Pery / Bring Your Own	Marcus Pery / Bring Your Own	Saturday
Watermelon & Knife	Brad Swartz	Brad Swartz	Saturday
Grill, Propane, Tools	Colen Boutwell	Colen Boutwell	Saturday
Plastic or cardboard for under grill	Jim White Dan Vickers	Jim White Dan Vickers	Saturday
Electric Skillet & Cooking Utensils	Dan Vickers	Dan Vickers	Saturday
<b>Saturday Dinner</b>			
Sausage	Jim White	Jim White	Saturday
Burgers	Jim White	Jim White	Saturday
Buns	Marcus Perry	Marcus Perry	Saturday
Condiments	Jim White	Jim White	Saturday
Macaroni Dish	Randy Hare	Randy Hare	Saturday
Pound Cake	Randy Hare	Randy Hare	Saturday
Snacks / Midrats	Nancy Beattie	Nancy Beattie	Saturday
<b>Sunday Breakfast</b>			
Pancakes, Eggs, Bacon, Butter, Syrup	Dan Vickers	Dan Vickers	Saturday

**Prepared by:** Name: DBSwartz, Dvickers Position/Title: Planning \_\_\_\_\_ Signature: \_\_\_\_\_

# INCIDENT BRIEFING (ICS 201)

## APPENDIX ONE

### ARRL Field Day Safety Officer Checklist

To qualify for the 100-point Safety Officer bonus (for Class A stations), a group must appoint a qualified person/s who are present at their site from the beginning of set-up until the end of break-down.

This form is NOT intended to be all inclusive.

The Safety Officer/s certify by submitting this form that due diligence was made to provide a safe operation.

---

[check (or circle) any/all that apply]

- Safety Officer/s or qualified designated assistant/s was on site for the duration of the event.
- Fuel for generator properly stored.
- Fire extinguisher on hand and appropriately located.
- First Aid kit on hand.
- First Aid - CPR - AED versed else trained participant/s on site for full Field Day period.
- Access to NWS alerts to monitor for inclement weather.
- Tent stakes properly installed and marked.
- Temporary antenna structures properly secured and marked.
- Site secured from tripping hazards.
- Site is set up in a neat and orderly manner to reduce hazards.
- Stations and equipment properly grounded.
- Access to a means to contact police/fire/rescue if needed.
- Safety Officer is designated point of contact for public safety officials.
- Minimize risks and control hazards to ensure no injuries to public.
- As necessary, monitoring participants for hydration and ensuring an adequate water supply is available.

signature(s) / call(s)

date

## INCIDENT BRIEFING (ICS 201)

### ARRL Field Day Site Responsibilities Checklist (for Class B, C, D, E and F)

To qualify for the 50-point bonus (for Class B, C, D/E and F stations), such designated person(s) shall be present at the site from the beginning of set-up until the end of break-down and are required to complete this certification for this 50-point bonus.

This form is NOT intended to be all inclusive.

The designated person(s) certifies by submitting this form that due diligence was made to provide a well-organized and safe operation.

---

[check box (or circle) any/all that apply (better than half of all these criteria are expected to be met to achieve this bonus – at a minimum, all bold items are expected to be checked to achieve this bonus)]

- Organizer(s) and/or safety representative(s) were on site for the duration of the event.**
- Fuel for generator (if applicable) properly stored.
- Fire extinguisher on hand and appropriately located.**
- First Aid kit on hand.**
- Access to NWS alerts to monitor for inclement weather.
- Tent (if used) stakes properly installed and marked.
- Temporary antenna structures (if used) properly secured and marked.
- Site secured from tripping hazards (coax cables, extension cords, etc.)
- Site is set up in a neat and orderly manner.**
- Stations and equipment properly grounded.**
- Access to a means to contact police/fire/rescue (if needed) is available.**
- Individual designated as a point of contact for visitors (ie, greeting the public or served-agency officials, providing verbal or written information about amateur radio).**
- Monitoring participants/visitors for hydration and ensuring an adequate water supply (bottled water) is available.**

---

signature(s) / call(s)

date

4/2026

# INCIDENT BRIEFING (ICS 201)

## MEDICAL PLAN (ICS 206)

<b>1. Incident Name:</b> Field Day 2026		<b>2. Operational Period:</b>		Date From: 6/26/2026 Time From: 1700		Date To: 6/28/2026 Time To: 1600	
<b>3. Medical Aid Stations:</b>							
Name	Location	Contact Number(s)/Frequency			Paramedics on Site?		
		146.430Mhz			<input type="checkbox"/> Yes <input checked="" type="checkbox"/> No		
					<input type="checkbox"/> Yes <input type="checkbox"/> No		
<b>4. Transportation (indicate air or ground):</b>							
Ambulance Service	Location	Contact Number(s)/Frequency			Level of Service		
Lake City Fire Rescue	225 NW Main Blvd, L.C. FL	911			<input checked="" type="checkbox"/> ALS <input type="checkbox"/> BLS		
Columbia County Fire Rescue	370 Race Track Rd. L.C. FL	911			<input checked="" type="checkbox"/> ALS <input type="checkbox"/> BLS		
<b>5. Hospitals:</b>							
Hospital Name	Address, Latitude & Longitude if Helipad	Contact Number(s)/Frequency	Travel Time		Trauma Center	Burn Center	Helipad
			Air	Ground			
HAC Florida Hospital	340 NW Commerce Dr. L.C. FL	386.719.9000	/p>	13	<input type="checkbox"/> Yes Level: _____ /font>	<input type="checkbox"/> Yes <input checked="" type="checkbox"/> No	<input checked="" type="checkbox"/> Yes <input type="checkbox"/> No
Lake City VA Hospital	619 Marion Ave. L.C. FL	386.755.3016	/p>	5	<input type="checkbox"/> Yes Level: _____ /font>	<input type="checkbox"/> Yes <input checked="" type="checkbox"/> No	<input type="checkbox"/> Yes <input checked="" type="checkbox"/> No
<b>6. Special Medical Emergency Procedures:</b>							
In the event of a minor injury contact on-site medical via phone or simplex 146.430Mhz and notify Safety Officer.							
In the event of major or life threatening condition, 1 <sup>st</sup> Call 911, 2 <sup>nd</sup> Notify on-site medical, 3 <sup>rd</sup> Notify Safety Officer							
<input type="checkbox"/> Check box if aviation assets are utilized for rescue. If assets are used, coordinate with Air Operations.							
<b>7. Prepared by (Medical Unit Leader):</b>		Name:		Signature:			
<b>8. Approved by (Safety Officer):</b>		Name: Jim Taylor		Signature:			
ICS 206	IAP Page /font>	Date/Time: 5/2/2026 4:11 PM					

# INCIDENT BRIEFING (ICS 201)

## ARRL Field Day 2026 Rules

**1. Eligibility:** Field Day is open to all amateurs in the areas covered by the ARRL/RAC Field Organizations and countries within IARU Region 2. DX stations residing in other regions may be contacted for credit and may submit entries as check-logs.

**2. Object:** To work as many stations as possible on the 160-, 80-, 40-, 20-, 15- and 10-meter HF bands, as well as all bands 50 MHz and above, and in doing so to learn to operate in abnormal situations in less than optimal conditions. A premium is placed on developing skills to meet the challenges of emergency preparedness as well as to acquaint the general public with the capabilities of amateur radio. See also recommended frequencies FAQ.

**3. Date and Time Period:** Field Day 2026 will be held June 27-28. Field Day is ALWAYS the fourth full weekend, beginning at 1800 UTC (1400 EDT) Saturday and ending at 2059 UTC (1659 EDT) Sunday.

3.1. Class A and B (see below) stations that do not begin setting up until 1800 UTC on Saturday may operate the entire 27-hour Field Day period.

3.2. Stations who begin setting up before 1800 UTC Saturday may work only 24 consecutive hours, commencing when on-the-air operations begin.

3.3. No class A or B station may begin its set-up earlier than 0000 UTC on the Friday (Thursday afternoon or evening local time) preceding the Field Day period. Cumulative set-up time shall not exceed a total of 24 hours.

**4. Entry Categories:** Field Day entries are classified according to the maximum number of simultaneously transmitted signals, followed by a designator indicating the nature of their individual or group participation. The minimum number of transmitters that must be claimed is one (1). Twenty (20) transmitters maximum are eligible for the purpose of calculating bonus points (2,000 points maximum). However, additional transmitters which may legitimately be used simultaneously will determine your entry category classification, but will not earn additional bonus points (i.e. 22 transmitters = 22A). The use of switching systems that allow for lock-outs in order to use multiple transmitters (i.e., an “octopus”) in an attempt to enter a lower-number-of-transmitters class are prohibited (i.e. using 2 transmitters that can transmit simultaneously, with two operators, and a lock-out system and entering class 1A). The use of simulcasting devices which allow a single operator to key and transmit on more than one transmitter at a time, is prohibited. Bonus stations, such as the GOTA station and satellite station do not count towards determining the number of transmitters for the class and do not qualify for transmitter bonus points.

4.1. (Class A) Club / non-club portable: Club or a non-club group of three or more persons set up specifically for Field Day. Such stations must be located in places that are not regular station locations and must not use facilities installed for permanent station use, or use any structure installed permanently for Field Day. A single licensee or trustee for the entry is responsible for the group entry. All equipment (including antennas) must lie within a circle whose diameter does not exceed 300 meters (1000 feet). To be listed as Class A, all contacts must be made with transmitter(s) and receiver(s) operating independent of commercial power mains. Entrants whom for any reason operate a transmitter or receiver from a commercial main for one or more contacts will be listed separately as Class A-Commercial.

4.1.1. Get-On-The-Air (GOTA) Station. Any Class A (or F) entry whose transmitter classification is two or more transmitters may also operate one additional station without changing its base entry category, known as the GET-ON-THE-AIR (GOTA) station. This GOTA station may operate on any Field Day band, HF or VHF, but is limited to one GOTA station transmitted signal at any time.

## INCIDENT BRIEFING (ICS 201)

4.1.1.1. This station must use a different callsign from the primary Field Day station. The GOTA station must use the same callsign for the duration of the event regardless if operators change. The GOTA station uses the same exchange as its parent.

4.1.1.2. The GOTA station may be operated by any person licensed since the previous year's Field Day, regardless of license class. It may also be operated by a generally inactive licensee. Non-licensed persons may participate under the direct supervision of an appropriate control operator. A list of operators and participants must be included on the required summary sheet to ARRL HQ.

4.1.1.3. As per FCC rules, this station must have a valid control operator present at the control point if operating beyond the license privileges of the participant using the station.

4.1.1.4. The maximum transmitter output power for the GOTA station shall be 100 watts. If the primary Field Day group is claiming the QRP multiplier level of five (5), the maximum transmitter output power of the GOTA station may not exceed 5 watts.

4.1.1.5. : There is no limit to the number of contacts made by the GOTA station. QSOs made by this station may be claimed for credit by its primary Field Day operation. In addition, bonus points may be earned by this station under rule 7.3.13.

4.1.1.6. The GOTA station may operate on any Field Day band. Only one transmitted signal is allowed from the GOTA station at any time.

4.1.1.7. The GOTA station does not affect the additional VHF/UHF station provided for under Field Day Rule 4.1.2. for Class A stations.

4.1.1.8. Participants are reminded that non-licensed participants working under the direction of a valid control operator may only communicate with other W/VE stations or with stations in countries with which the US has entered a third-party agreement.

4.1.1.9. The GOTA station does not qualify as an additional transmitter when determining the number of transmitters eligible for the 100-point emergency power bonus under Rule 7.3.1.

4.1.2. Free VHF Station: All Class A entries may also operate one additional transmitter if it operates exclusively on any band or combination of bands above 50 MHz (VHF/UHF) without changing its basic entry classification. This station does not qualify for a 100-point bonus as an additional transmitter. This station may be operated for the clubs Field Day period and all contacts count for QSO credit. It is operated using the primary callsign and exchange of the main Field Day group and is separate and distinct from the GOTA station.

4.2. (Class A - Battery) Club / non-club portable: Club or non-club group of three or more persons set up specifically for Field Day. All contacts must be made using an output power of 5 watts or less and the power source must be something other than commercial power mains or motor-driven generator (e.g.: batteries, solar cells, water-driven generator). Other provisions are the same for regular Class A. Class AB is eligible for a GOTA station if GOTA

## INCIDENT BRIEFING (ICS 201)

requirements are met; however if a GOTA station is used in this class it must meet the 5 watts or less power requirement of this category. Class A - Battery entries will be listed separately.

4.3. (Class B) One or two person portable: A Field Day station set up and operated by no more than two persons. Other provisions are the same for Class A except it is not eligible for a GOTA or free VHF station. One and two person Class B entries will be listed separately.

4.4. (Class B - Battery) One or two person portable: A Field Day station set up and operated by no more than two persons. All contacts must be made using an output power of 5 watts or less and the power source must be something other than commercial mains or motor-driven generator. Other provisions are the same for Class A except it is not eligible for a GOTA or free VHF station. One and two person Class B - Battery entries will be listed separately.

4.5. (Class C) Mobile: Stations in vehicles capable of operating while in motion and normally operated in this manner. This includes maritime and aeronautical mobile. If the Class C station is being powered from a car battery or alternator, it qualifies for emergency power but does not qualify for the multiplier of 5, as the alternator/battery system constitutes a motor-driven generating system.

4.6. (Class D) Home stations: Stations operating from permanent or licensed station locations using commercial power. Class D stations can count contacts with any other station for QSO credit.

4.7. (Class E) Home stations - Emergency power: Same as Class D, but using emergency power for transmitters and receivers. Class E may work all Field Day stations.

4.8. (Class F) Emergency Operations Centers (EOC): An amateur radio station at an established EOC activated by a club or non-club group. Class F operation must take place at an established EOC site. Stations may utilize equipment and antennas temporarily or permanently installed at the EOC for the event. Entries will be reported according to number of transmitters in simultaneous operation. Class F stations are eligible for a free VHF station. At Class 2F they are also eligible for a GOTA station.

4.8.1. For Field Day purposes, an Emergency Operations Center (EOC) is defined as a facility established by:

a) a Federal, State, County, City or other Civil Government, agency or administrative entity; or,

b) a Chapter of a national or international served agency (such as American Red Cross or Salvation Army) with which your local group has an established operating arrangement;

4.8.1.1. A private company EOC does not qualify for Class F status unless approved by the ARRL Field Day Manager.

4.8.2. Planning of a Class F operation must take place in conjunction and cooperation with the staff of the EOC being activated.

4.8.3. Other provisions not covered are the same as Class A.

4.8.4. A Class F station may claim the emergency power bonus if emergency power is available at the EOC site.

## INCIDENT BRIEFING (ICS 201)

4.8.4.1. The emergency power source must be tested during the Field Day period but you are not required to run the Class F operation under emergency power.

**5. Exchange:** Stations in ARRL / RAC sections will exchange their Field Day operating Class and ARRL / RAC section. Example: a three transmitter Class A station in Connecticut which also has a GOTA station and the extra VHF station would send "3A CT" on CW or Digital, or "3 Alpha Connecticut" on Phone.

DX stations send operating class and the term DX (i.e. 2A DX).

### 6. Miscellaneous Rules:

6.1. A person may not contact for QSO credit any station from which they also participate.

6.2. A transmitter/receiver/transceiver used to contact one or more Field Day stations may not subsequently be used under any other callsign to participate in Field Day. Family stations are exempt provided the subsequent callsign used is issued to and used by a different family member.

6.3. Field Day contacts are allowed using Phone, CW and Digital (non-CW) modes. Stations can be worked once per band per mode under this rule.

6.4. Each contact must include contemporaneous direct initiation by both operators making a contact. Initiation of a contact may be by either local or remote control. Fully automated contacts are prohibited.

6.5. For any of the three event modes (CW, Phone, or Digital), only one transmitted signal (or data stream) per band is permitted at any time. Multi Streaming (eg. using Fox and Hound Mode; Dxpediton Mode, or MSHV) is prohibited.

6.6. All voice contacts are equivalent.

6.7. All non-CW digital contacts are equivalent.

6.8. Cross-band contacts are not permitted (Satellite QSOs cross-band contacts are exempted).

6.9. The use of more than one transmitter at the same time on a single band-mode is prohibited. Exception: a dedicated GOTA station may operate as prescribed in Rule 4.1.

6.10. No repeater contacts are allowed.

6.11. Batteries may be charged while in use. Except for Class D stations, the batteries must be charged from a power source other than commercial power mains. To claim the power multiplier of five, the batteries must be charged from something other than a motor driven generator or commercial mains.

6.12. All stations for a single entry must be operated under one callsign, except when a dedicated GOTA station is operated as provided under Field Day Rule 4.1.1. it uses a single, separate callsign.

**7. Scoring:** Scores are based on the total number of QSO points times the power multiplier

## INCIDENT BRIEFING (ICS 201)

corresponding to the highest power level under which any contact was made during the Field Day period plus the bonus points.

An aggregate club score will also be published, which will be the sum of all individual entries indicating a specific club (similar to the aggregate score totals used in ARRL affiliated club competitions).

Participants from any Class can optionally include a single club name with their submitted results following Field Day. For example, if Podunk Hollow Radio Club members Becky, W1BXY, and Hiram, W1AW, both participate in 2026 Field Day -- Hiram from his Class D home station, and Becky from her Class C mobile station -- both can include the radio club's name when reporting their individual results. The published results listing will include individual scores for Hiram and Becky, plus a combined score for all entries identified as Podunk Hollow Radio Club.

### 7.1. QSO Points:

7.1.1. Phone contacts count one point each.

7.1.2. CW contacts count two points each.

7.1.3. Digital contacts count two points each.

7.2. Power multipliers: The power multiplier that applies is determined by the highest power output of any of the transmitters used during the Field Day operation. Power output for classes A, B and C cannot exceed 500 watts Peak Envelope Power (PEP) transmitter output. Power output for classes D, E and F cannot exceed 100 watts Peak Envelope Power (PEP) transmitter output.

7.2.1. If all contacts are made using a power of 5 watts or less and if a power source other than commercial mains or motor-driven generator is used (batteries, solar cells, water-driven generator), the power multiplier is five (5).

7.2.2. If all contacts are made using a power of 5 watts or less, but the power source is from a commercial main or from a motor-driven generator, the power multiplier is two (2). If batteries are charged during the Field Day period using commercial mains or a motor-driven generator the power multiplier is two (2).

7.2.3. If any or all contacts are made using an output power up to 100 watts or less, the power multiplier is two (2).

7.2.4. If any or all contacts are made using an output power greater than 100 watts, the power multiplier is one (1).

7.2.5. The power multiplier for an entry is determined by the maximum output power used by any transmitter used to complete any contact during the event. (Example: a group has one QRP station running 3 watts and a second station running 500 watts, the power multiplier of one (1) applies to all contacts made by the entire operation).

7.3. Bonus Points: All stations are eligible for certain bonus points, depending on their entry class. The following bonus points will be added to the score, after the multiplier is applied, to determine the final Field Day score. Bonus points will be applied only when the claim is made on the summary sheet and any proof required accompanies the entry or is received via email or normal mail delivery.

7.3.1. 100% Emergency Power: 100 points per transmitter classification if all contacts

## INCIDENT BRIEFING (ICS 201)

are made only using an emergency power source up to a total of 20 transmitters (maximum 2,000 points). GOTA station and free VHF Station for Class A and F entries do not qualify for bonus point credit and should not be included in the club's transmitter total. All transmitting equipment at the site must operate from a power source completely independent of the commercial power mains to qualify. (Example: a club operating 3 transmitters plus a GOTA station and using 100% emergency power receives 300 bonus points.) Available to Classes A, B, C, E, and F.

7.3.2. Media Publicity: 100 bonus points may be earned for obtaining publicity from the local media. A copy of the actual media publicity received (newspaper article, social media post, etc.) must be submitted to claim the points. Any combination of bona fide media hits would qualify for the bonus points. For example, posting the details of your upcoming or ongoing Field Day activity, or your Field Day results, as posted on a news media site (which could include the media site's Facebook, Twitter, or Instagram) would meet the bonus criteria. Available to all Classes.

7.3.3. Public Location: 100 bonus points for physically locating the Field Day operation in a public place (i.e. shopping center, park, school campus, etc). Person(s) shall be available to greet the public and be identified by some sort of name badge. The intent is for amateur radio to not only be on display to the public, but to also engage any visitors showing up at your location. Available to Classes A, B and F.

7.3.4. Public Information Table: 100 bonus points for a Public Information Table at the Field Day site. The purpose is to make appropriate handouts and information available to the visiting public at the site. A copy of a visitor's log, copies of club handouts or photos is sufficient evidence for claiming this bonus. Available to Classes A, B and F.

7.3.5. Message Origination to Section Manager: 100 bonus points for origination of a formal message to the ARRL Section Manager or Section Emergency Coordinator by your group from its site. You should include the club name, number of participants, Field Day location, and number of ARES operators involved with your station. The message must be transmitted during the Field Day period and a copy of it must be included in your submission in standard ARRL radiogram or no credit will be given. The message must leave or enter the Field Day operation via amateur radio RF.

The Section Manager message is separate from the messages handled in Rule 7.3.6. and may not be claimed for bonus points under that rule. Available to all Classes.

7.3.6. Message Handling: 10 points for each formal message originated, relayed or received and delivered during the Field Day period, up to a maximum of 100 points (ten messages). Copies of each message must be included with the Field Day report. The message to the ARRL SM or SEC under Rule 7.3.5. does not count towards the total of 10 for this bonus. Messages claimed under this bonus must be in either standard NTS or ICS-213 format (or have the equivalent content) All messages claimed for bonus points must leave or enter the Field Day operation via amateur radio RF. Available to all Classes.

7.3.7. Satellite QSO: 100 bonus points for successfully completing at least one QSO via an amateur radio satellite during the Field Day period. Groups are allowed one dedicated satellite transmitter station without increasing their entry category. Satellite QSOs also count for regular QSO credit. Show them listed separately on the summary sheet as a separate "band." You do not receive an additional bonus for contacting different satellites, though the additional QSOs may be counted for QSO credit unless prohibited under Rule 7.3.7.1. The QSO must be between two Earth stations through a

## INCIDENT BRIEFING (ICS 201)

satellite. Available to Classes A, B, and F.

7.3.7.1 Stations are limited to one (1) completed QSO on any single channel FM satellite.

7.3.8. Alternate Power: 100 bonus points for Field Day groups making a minimum of five QSOs without using power from commercial mains or petroleum driven generator. This means an "alternate" energy source of power, such as solar, wind, methane or water. This includes batteries charged by natural means (not dry cells). The natural power transmitter counts as an additional transmitter. If you do not wish to increase your operating category, you should take one of your other transmitters off the air while the natural power transmitter is in operation. A separate list of natural power QSOs should be submitted with your entry. Available to Classes A, B, E, and F.

7.3.9. W1AW Bulletin: 100 bonus points for copying the special Field Day bulletin transmitted by W1AW (or K6KPH) during its operating schedule during the Field Day weekend (listed in this rules announcement). An accurate copy of the message is required to be included in your Field Day submission. (Note: The Field Day bulletin must be copied via amateur radio. It will not be included in Internet bulletins sent out from Headquarters and will not be posted to Internet BBS sites.) Available to all Classes.

7.3.10. Educational activity bonus: One (1) 100-point bonus may be claimed if your Field Day operation includes a specific educational-related activity. The activity can be diverse and must be related to amateur radio. It must be some type of formal activity. It can be repeated during the Field Day period but only one bonus is earned. For more information consult the FAQ in the complete Field Day packet. Available to Classes A & F entries and available clubs or groups operating from a club station in class D and E with 3 or more participants.

7.3.11. Site Visitation by an elected governmental official: One (1) 100-point bonus may be claimed if your Field Day site is visited by an elected government official as the result of an invitation issued by your group. Available to all Classes.

7.3.12. Site Visitation by a representative of an agency: One (1) 100-point bonus may be claimed if your Field Day site is visited by a representative of an agency served by ARES in your local community (American Red Cross, Salvation Army, local Emergency Management, law enforcement, etc.) as the result of an invitation issued by your group. ARRL officials (SM, SEC, DEC, EC, etc) do not qualify for this bonus. Available to all Classes.

7.3.13. GOTA Bonus: Class A and F stations operating a GOTA station may earn the following bonus points:

7.3.13.1. Any successfully completed contacts made by an operator at the GOTA station are worth five (5) points, regardless of mode used. There is no limit to the number of contacts a single GOTA operator can make. The GOTA station bonus points are not multiplied by the power multiplier (this is a clarification of the rules published in 2023.)

7.3.13.2. If a GOTA station is supervised full-time by a GOTA Coach, a single 100-point bonus will be earned.

7.3.13.2.1. The GOTA Coach supervises the operator of the station, doing

## INCIDENT BRIEFING (ICS 201)

such things as answering questions and talking them through contacts, but may not make QSOs or perform logging functions.

7.3.13.2.2. To qualify for this bonus, there must be a designated GOTA Coach present and supervising for at least 10 contacts.

7.3.14. Web submission: A 50-point bonus may be claimed by a group submitting their Field Day entry via the <https://field-day.arrl.org/fdentry.php> web app. Available to all Classes.

7.3.15. Field Day Youth Participation:

7.3.15.1. A 20-point bonus (maximum of 100) may be earned by any Class A, C, D, E, or F group for each participant age 18 or younger at your Field Day operation that completes at least one QSO.

7.3.15.2. For a 1-person Class B station, a 20-point bonus is earned if the operator is age 18 or younger. For a 2-person Class B station, a 20-point bonus is earned for each operator age 18 or younger (maximum of 40 points.) Keep in mind that Class B is only a 1 or 2 person operation. This bonus does not allow the total number of participants in Class B to exceed 1 or 2.

7.3.16 Social Media: 100 points for promoting your Field Day activation to the general public via an active, recognized and utilized social media platform (Facebook, Twitter, Instagram, etc). This bonus is available to bona fide amateur radio clubs and Field Day groups that welcome visitors to their operation. Individual participants do not qualify for this bonus. Club websites do not qualify for this bonus. Available to all classes.

7.3.17 Safety Officer Bonus: A 100-point bonus may be earned by having a person serving as a Safety Officer for those groups setting up Class A stations. This person must verify that all safety concerns on the Safety Check List (found in the ARRL Field Day Packet) have been adequately met. This is an active bonus – simply designating someone as Safety Officer does not automatically earn this bonus. A signed copy of the Safety Check List must be included in the supporting documentation sent to ARRL HQ in order to claim this bonus. Available to Class A entries only.

7.3.18. Field Day Responsibilities Bonus: A 50-point bonus may be earned by having a person ensure that the Field Day site is free of hazards, and that safety precautions have been taken throughout the entire event, as well as providing a point of contact to the visiting public or served agency officials. A signed copy of the Field Day Responsibilities Check List must be included in the supporting documentation sent to ARRL HQ in order to claim this bonus. Available to Class B, C, D, E, or F entries.

## 8. Reporting:

8.1. Entries may be submitted to the ARRL via:

8.1.1. Field Day Web App at <https://field-day.arrl.org/fdentry.php> or

8.1.2. USPS or other delivery service to (tracking highly recommended): Field Day Entries, 225 Main St, Newington, CT 06111.

## INCIDENT BRIEFING (ICS 201)

8.2. Entries must be postmarked or submitted by Tuesday July 28, 2026. Late entries cannot be accepted.

8.3. A complete Field Day Web Applet Submission site entry consists of:

8.3.1. An official ARRL summary sheet which is completed via web app at <https://field-day.arrl.org/fdentry.php>;

8.3.2. Supporting information uploaded via web app. Supporting information must include:

8.3.2.1. An attached list of stations worked by band/mode during the Field Day period (dupe sheet or an alpha/numeric list sorted by band and mode – a Cabrillo log can be submitted in lieu of a Dupe Sheet/Calls list by band/mode); and

8.3.2.2. Proof of all bonus points claimed (copies of visitor logs, press releases, NTS messages handled, photographs, etc).

8.3.2.3 The web app will display a confirmation number and email a confirmation of your Field Day entry to the email address entered via the app. Please be sure to record this confirmation number and/or save the confirmation email.

8.4 While the preferred method of submitting entries is via the Web Applet, entries and/or supporting documentation may alternately be submitted via email to [fieldday@arrl.org](mailto:fieldday@arrl.org). A complete non-web-app email submission consists of:

8.4.1. An electronic copy of an ARRL summary sheet completely and accurately filled out;

8.4.2. An attached list of stations worked by band/mode during the Field Day period (dupe sheet or an alpha/numeric list sorted by band and mode); and

8.4.3. Proofs of bonus points claimed (copies of visitor logs, press releases, NTS messages handled, photographs, etc).

8.5. A complete land/postal-mail or delivery non-electronic submission consists of:

8.5.1. A complete and accurate ARRL summary sheet;

8.5.2. An accompanying list of stations worked by band/mode during the Field Day period (dupe sheet or an alpha/numeric list sorted by band and mode); and

8.5.3. Proofs of bonus points claimed (copies of visitor logs, press releases, NTS messages handled, photographs, etc).

8.6. Complete station logs are NOT required for submission, and ARRL does not use the logs. The club should maintain log files for one year in case they are requested by ARRL HQ. However, a list of stations worked sorted by band and mode (dupe sheet) is required.

8.7. Cabrillo format log files are NOT required for Field Day entries, but they will be accepted in lieu of the dupe sheets (but do not constitute an entry unless the web app (or a corresponding

## INCIDENT BRIEFING (ICS 201)

summary sheet with complete mailed entry) is also submitted.

8.8. Digital images of proof of bonus points are acceptable.

8.9. Electronic submissions are considered signed when submitted.

### 9. Miscellaneous:

9.1. The schedule of bulletin times for W1AW is included in this announcement. While W1AW does not have regular bulletins on weekends, the Field Day message will be sent according to the schedule included with this announcement. The W1AW bulletins will be transmitted on the regular W1AW frequencies listed in QST. The PSK31 bulletin will be transmitted on the W1AW teleprinter frequencies. The special Field Day bulletin will be transmitted from station K6KPH on the West Coast as included in the bulletin schedule.

9.2. Decisions of the ARRL Awards Committee are final in adjudicating Field Day problems.

9.3. The complete Field Day information package may be obtained by downloading from the Field Day home page at: [www.arrl.org/field-day](http://www.arrl.org/field-day)

9.4. For more Field Day information/questions contact: [fdinfo@arrl.org](mailto:fdinfo@arrl.org) or phone (860) 594-0232.

Revised 4/2026

# INCIDENT BRIEFING (ICS 201)

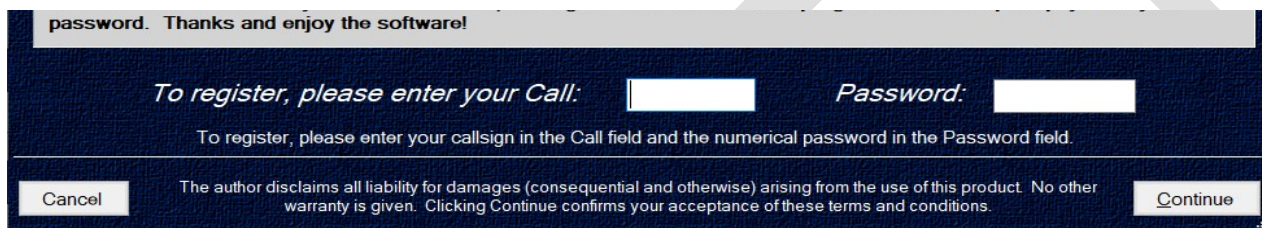
## N3FJP Set up for NF4CA Field Day

This document presumes you have already installed the N3FJP Field Day logging software with the latest updates on your Windows based computer.

It is not necessary for you to purchase a registration key. We will use the club registration key.

When you start the program for the first time, you will be presented with the registration screen. Since we are providing the registration information for Field Day, you would not enter your personal call sign here. It will be the call sign and password of the person that originally purchased the key.

If you installed the software the previous year, then review these steps. We will address last years database information later.



password. Thanks and enjoy the software!

To register, please enter your Call:  Password:

To register, please enter your callsign in the Call field and the numerical password in the Password field.

The author disclaims all liability for damages (consequential and otherwise) arising from the use of this product. No other warranty is given. Clicking Continue confirms your acceptance of these terms and conditions.

Cancel Continue

After you enter the registration you will see a set up box for entering our local information.

These boxes have been filled in based on the 2023 event. This year we are using the club call of NF4CA.

Obviously Country is USA and Continent is NA.

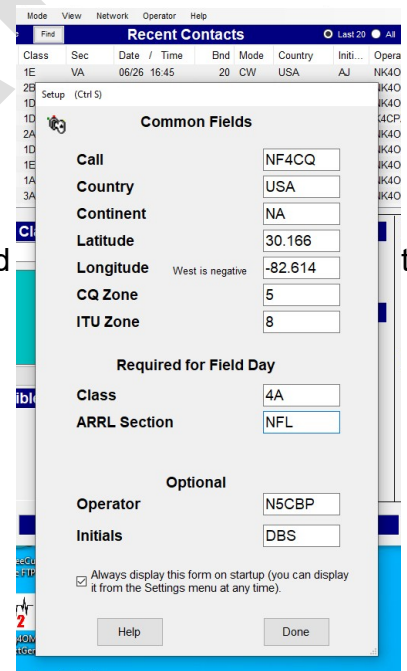
Since we are again at Westside Elementary School, I have entered Lat/Lon based on Google Maps for the parking lot at the bus loop area that we use.

Florida is in CQ Zone 5 and ITU Zone 8.

The class 3A is based on our station count and that we are Club Portable.

Our section is North Florida, NFL.

The Operator and initials changes depending on who is operating the station at the moment. **Be sure to change this with a change of operators.** To make the change, click Operator in the heading and fill in your information.



Class	Sec	Date / Time	Band	Mode	Country	Init...	Opera
1E	VA	06/26 16:45	20	CW	USA	AJ	NK4O

Setup (Ctrl S)

### Common Fields

Call:

Country:

Continent:

Latitude:

Longitude:  West is negative

CQ Zone:

ITU Zone:

### Required for Field Day

Class:

ARRL Section:

### Optional

Operator:

Initials:

Always display this form on startup (you can display it from the Settings menu at any time).

Help Done

The next step will be to set up your computer and N3FJP to be networked during Field Day.

# INCIDENT BRIEFING (ICS 201)

## N3FJP Networking Set up for NF4CA Field Day

Phone:	160	80	60	40	30	20	17	15	12	10
CW:			DESKTOP-5I							
Digital:										
Phone:	6	2	1.25	70 cm	33 cm	23 cm	13 cm	9 cm	6 cm	3 cm
CW:										
Digital:										

This Station's Name: Server Name or IP: Set Msg Server to Log File [host] Port: Type message to send and press enter: Message To (blank to broadcast): Hide

### Change the original computer name to something more recognizable for Field Day

As you can see in the example screenshots, the original computer name does not help you know which operator's computer you are looking at. This screen is what you can use to see what band and mode other operators are using. This is important since we can only have one station at a time on a given band and mode. Something that starts with your name or call sign is suggested. This is changed in Control Panel > System > Rename this PC. This will probably require a reboot of the computer.

Digital: [Progress Bar]

This Station's Name: DESKTOP-5IO1P4 Server Name or IP: DESKTOP-5IO1P4 Set Msg Server to Log File [host] Port: 1000 Type message to send and press enter: Message To (blank to broadcast): DESKTOP-5IO1P4M

Hopefully after the name change, the box labeled This Station's Name will reflect the change. At this point, do not be concerned about the Server Name box. We will fill this in after your computer is on the network and the server computer is also connected. The port number is 1000.

### Connect your computer to the Field Day Network

We again plan to network our computers using ethernet cable .

## INCIDENT BRIEFING (ICS 201)

### Set N3FJP and your computer to connect to the Logging Server and other computers

This step will connect our computers to the server so that our contacts will be logged in a central location. It will also allow you to keep track of what band and mode other operators are using. *It is important that we coordinate with other operators before changing bands.*

We will be using the TCP method of connecting our computers for logging. To set up TCP, make sure this station's name matches the computer name for your computer and the server name matches the computer name for the server. They must be IDENTICAL.

Then click the TCP networking method option and check the Enable Status / Chat functions.

Connections are on port 1000, so if you have any trouble connecting, make sure your virus protection software is allowing the connection (on both server and client machines). Or turn off your virus protection during Field Day

The list box of PCs shows all the PCs that have connected to the server.

To send a broadcast message, type your message in the message field, leave the Message To field blank, and then press enter.

Message To (blank to broadcast):  
DESKTOP-5I01P4M

Server and clients connected

Network Method:  
 File Share  TCP

Enable Status / Chat Functions

Sync Clocks

Help Done

Digital: [Green]

This Station's Name: DESKTOP-5I01P4  
Server Name or IP: DESKTOP-5I01P4  
Set Msg Server to Log File Host  
Port: 1000  
Type message to send and press enter:  
Message To (blank to broadcast): DESKTOP-5I01P4

All messages are seen on all PCs regardless of the Message To field. However, a message will appear in the Network Status Display box of the receiving PC if the Message To field identifies that station. If the Message To field is left blank, then a broadcast message is assumed and the message box will appear on the main form of all the PCs.

*Be advised that ALL messages will appear on ALL PC's on the logging screen even if you address it to one particular station. It is not a private message!*

Clicking the Sync Clocks button will set all the PCs currently connected and running this program to the current date and time of this PC if they have enabled the Status / Chat function. Note that the software must be running with Administrator privileges on all systems for this function to work with later operating systems.

**Keep ALL network equipment (especially your PCs, router and / or hubs) on a UPS! Power fluctuations on the network and PC shut downs due to power loss will damage your data file, cause the loss of a block of records within your database or corrupt it completely.**

# INCIDENT BRIEFING (ICS 201)

## This is how to setup N3FJP to interface with the ICOM IC-7300

Open N3FJP and select Settings and then Rig Interface.

Select Icom and your com port.

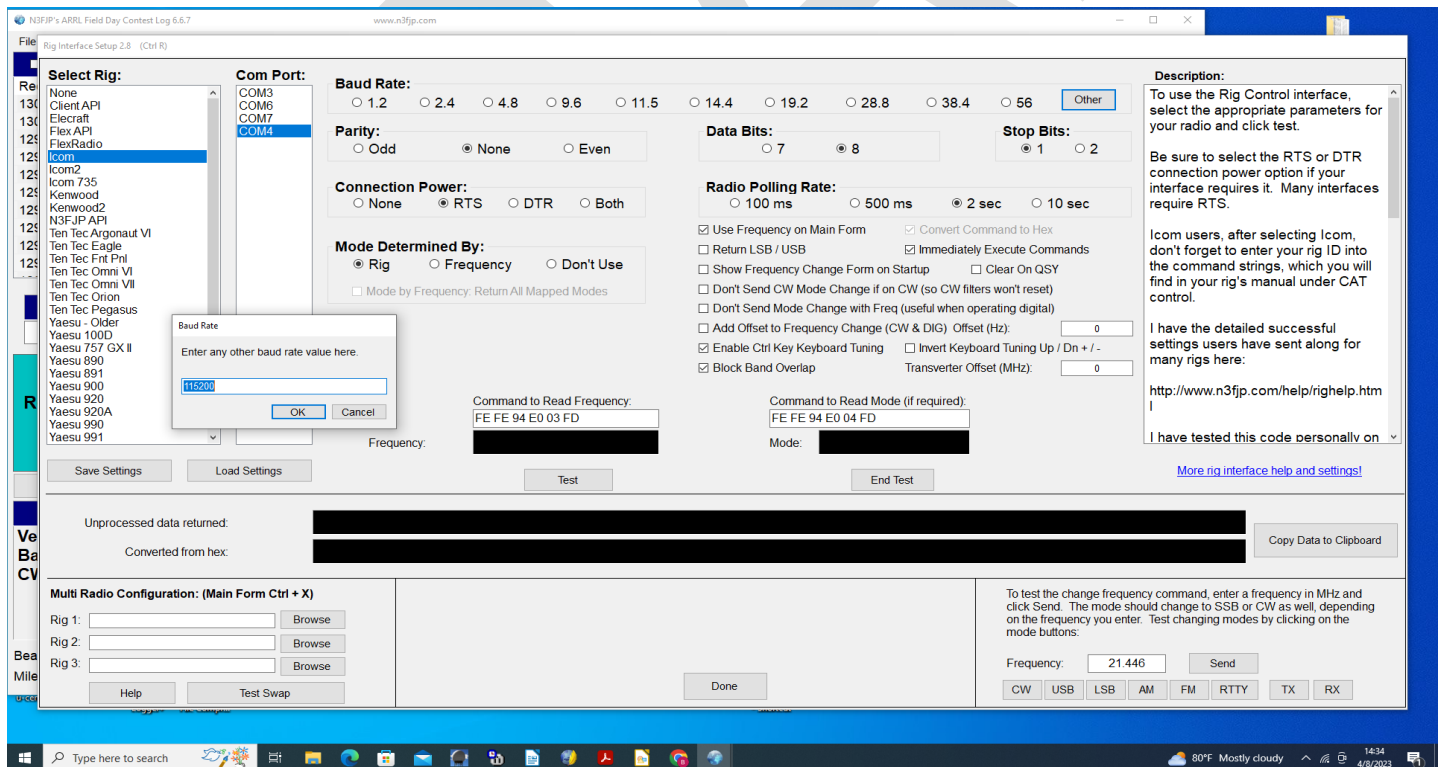
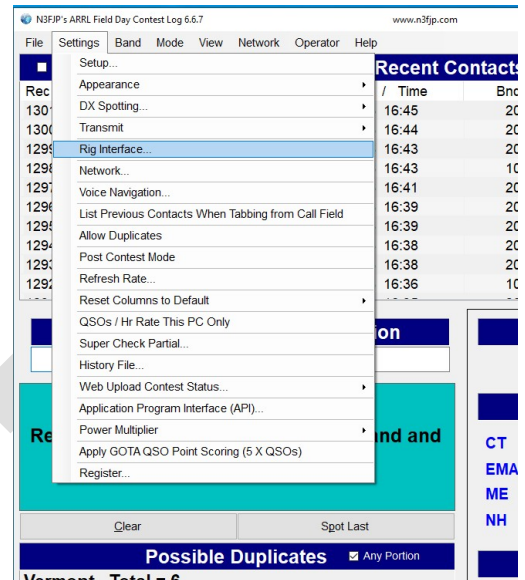
Determine your CI-V Baud rate that is in use on your radio and then select that in the Baud Rate area. I use 115200, so I needed to click the other box and then type the value.

These settings worked on my rig:  
Parity-None, Data Bits-8, Stop Bits-1,  
Connection Power-RTS, Radio Polling Rate-2 Sec,  
Mode Determined By-Rig

The check boxes under the Polling Rate are as shown in the image below.

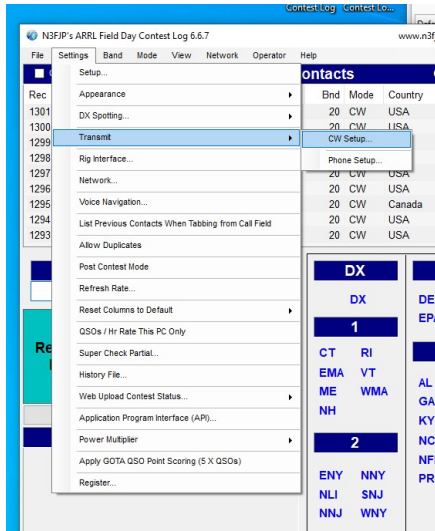
The two boxes in the middle that are labeled Command to Read Frequency and Command to Read Mode need to be edited. The Icom 7300 has an address of "94" by default so the 64 in each box needs to be changed to match.

Click the TEST button and if you are successful, the frequency and mode will show. DO NOT click End Test or the interface will stop. Click Done and the box to disappear and the interface will continue to function.



# INCIDENT BRIEFING (ICS 201)

## This is how to setup N3FJP to transmit CW using F-keys with the ICOM IC-7300



Follow these instructions to set up N3FJP to send predetermined messages to your radio for transmit. This will save your fist when running a contest.

For this to work you must first set up the N3FJP logging software to interface with the IC-7300 (separate instruction sheet).

On the 7300, press the VOX/BKIN button once so the screen reads BK-IN.

For CW we will set up a series of commands with messages to be sent for "running" or "search and pounce".

Open N3FJP and select Settings, Transmit, then CW Setup.

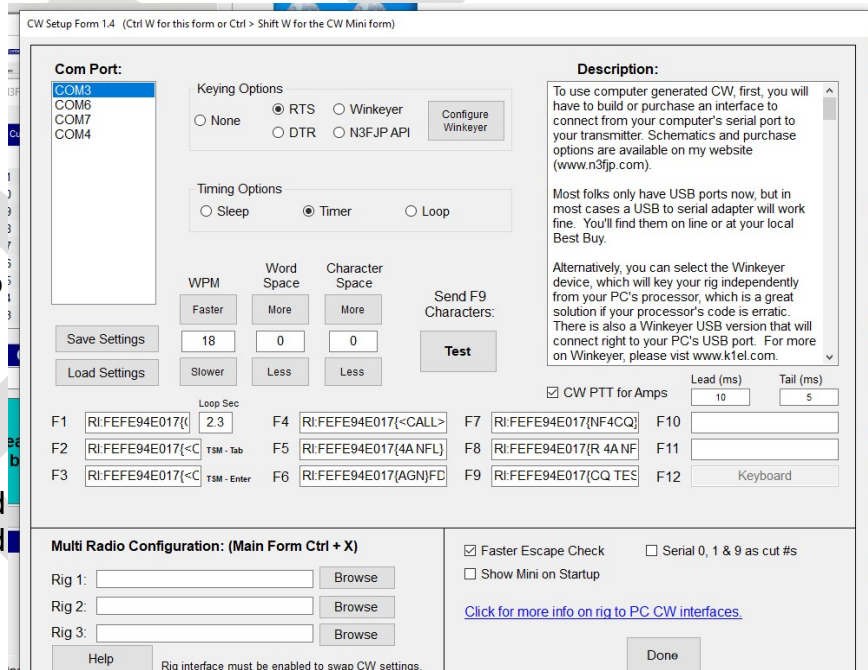
Pick your com Port.

Please note that the N3FJP software does not share ports with other programs, or even different functions within this one. For example, if you are using Com 4 for rig interface, you'll need to select a different port to send CW.

Then in Timing Options select Timer.

Next, enter the WPM code speed and any adjustments to the standard word spacing (0 is standard).

Place a check (optional) in the Show Mini on Startup. This will place a small reminder box on the screen showing contents of the F-Keys.



CW Setup Form 1.4 (Ctrl W for this form or Ctrl + Shift W for the CW Mini form)

**Com Port:** COM3, COM6, COM7, COM4

**Keying Options:**  None,  RTS,  Winkeyer,  DTR,  N3FJP API

**Timing Options:**  Sleep,  Timer,  Loop

**WPM:** 18 (Faster/Slower), **Word Space:** 0 (More/Less), **Character Space:** 0 (More/Less)

**Send F9 Characters:** [Test]

**Multi Radio Configuration:** Rig 1, Rig 2, Rig 3 (Browse buttons)

**Options:**  CW PTT for Amps,  Faster Escape Check,  Show Mini on Startup

**F-Keys:** F1-R1, F2-R2, F3-R3, F4-R4, F5-R5, F6-R6, F7-R7, F8-R8, F9-R9, F10-R10, F11-R11, F12-R12

## INCIDENT BRIEFING (ICS 201)

There are two ways we can use to populate the F-keys to transmit.

### Option #1

*So the F-keys should look like this:*

F1 CQ FD NF4CA  
F2 <CALL> 3A NFL  
F3 TU NF4CA FD  
F4 NF4CA  
F5 <CALL>  
F6 3A NFL  
F7 NR?  
F8 AGN?  
F9 SRI B4  
F10 NIL  
F11 ^

### Option #2

When you need to send HEX to the radio.,

You will need to change the first 00 to the CI-V address of the radio and the default for the IC-7300 is 94. Then for each F-key you will need to insert the command and the wildcard with the desired text.

*So the F-keys should look like this:*

You will need to change the first 00 to the CI-V address of the radio and the default for the IC-7300 is 94. Then for each F-key you will need to insert the command and the wildcard with the desired text.

*So the F-keys should look like this:*

F1 RI:FEFE94E017{CQ FD NF4CA }FD (there are three spaces between the Q and the )  
F2 RI:FEFE94E017{<CALL> 3A NFL}FD  
F3 RI:FEFE94E017{TU NF4CA FD}FD  
F4 RI:FEFE94E017{NF4CA}FD  
F5 RI:FEFE94E017{<CALL>}FD  
F6 RI:FEFE94E017{3A NFL}FD  
F7 RI:FEFE94E017{NR?}FD  
F8 RI:FEFE94E017{AGN?}FD  
F9 RI:FEFE94E017{SRI B4}FD  
F10 RI:FEFE94E017{NIL}FD  
F11

You can test the F9 key by pressing the **Test** button on the setup page. Press **Stop** to end the test,. When you have finished the setup then select the Done button and you will be ready to go. (The F-keys do not work until you exit the setup page.)

## INCIDENT BRIEFING (ICS 201)

### This is what will be sent:

F1	CQ FD NF4CA	Lets others know you are ready for Field Day contacts.
F2	<CALL> 3A NFL	The call sign you typed plus our exchange.
F3	TU NF4CA FD	Thank You and lets others know you are ready for the next contact.
F4	NF4CA	If you are asked for our call sign again.
F5	<CALL>	If you are do not have all of their call sign. You might type W4? Or ?NGU in the call box and press the F5 key. It will be asking for a fill.
F6	3A NFL	If you are asked for our exchange again.
F7	NR?	Asks them for their exchange again.
F8	AGN?	Usually sent when you are trying hard to get that fill you asked for.
F9	SRI B4	Lets the other station know that they are a duplicate contact.
F10	NIL	Sent when you just can not hear the station well enough to complete the contact. This also lets others know you are ready for the next contact.
F11	.....	Sends the 8-dit error message

The logging software must be in focus for the keying to work.

To enable the **Tab Sends Message (TSM)** option, Press Ctrl + Shift + G from the main form. With TSM enabled, when you tab from the Call field, the F2 string will be sent. When you press enter, the F3 string will be sent.

To send **keyboard CW** from the main form press F12. Your text will be sent as you type. Press F12 again to exit keyboard mode.

If you need to ask for fills because conditions are difficult and you didn't hear them well, then by all means do that.

If you need to take a break to catch up on logging, please say on frequency to stand by for a minute, catch up then give your call sign again to restart. The goal is to hold the frequency and keep getting the contacts. Don't be concerned about saying anything else, it is not a conversation.

# INCIDENT BRIEFING (ICS 201)

## Running:

*This is when you find an available frequency, call CQ, make contacts and hold the frequency by doing it over and over again.*

To use this feature in "Running" a frequency you will press the F1 key on your computer keyboard. This will transmit "CQ FD NF4CA". Pause and then press the F1 key again. It will re-transmit one more time. You should listen during the pause to see if you get a response. When first starting on a frequency you may need to do this several times before you get a pileup.

When you get a response, use the keyboard to enter their call sign and then press the F2 key. This will transmit their Call and our Class of "3A NFL".

After they send you their exchange and you type it in the Class and Section boxes, you press the F3 key which will transmit "TU NF4CA FD". Listen for the next call sign to acknowledge and rinse and repeat. If you don't have a pileup yet, go back to the F1 key and start over.

**Do not change frequency. The pileup will come!**

### Example exchange:

#### Without TSM

*(the F1 key should be in a loop and send 3 times before stopping. Press once and listen, if no answer, press it again until you get a response)*

**YOU** F1: CQ FD NF4CA  
Listen  
F1: CQ FD NF4CA  
Listen  
F1: CQ FD NF4CA

Them KC5GOI

**YOU** Keyboard: KC5GOI  
F2: <their Call> 3A NFL

Them Four Alpha North Texas

**YOU** Keyboard: type 4A NTX  
F3: TU NF4CA FD  
Listen

#### With TSM

**YOU** F1: CQ FD NF4CA  
Listen  
F1: CQ FD NF4CA  
Listen  
F1: CQ FD NF4CA

Them KC5GOI

**YOU** Keyboard: KC5GOI  
Tab key: <their Call> 3A NFL

Them Four Alpha North Texas

**YOU** Keyboard: type 4A NTX  
Return key: TU NF4CA FD  
Listen

# INCIDENT BRIEFING (ICS 201)

## Search and Pounce:

*This is when you are the person looking for someone calling CQ and responding to them.*

Instead of staying on one frequency, you scroll up and down the band looking for contacts. On the 7300 or other radios with a waterfall, you can see the signals and seek them out. This will require some experimenting with timing and being aggressive.

You may want to listen to the station calling CQ until you pick up their call sign and exchange before you start giving your call sign. Or if you didn't get their info before making contact don't be shy asking them for the information. Do not let them go until you have all the information. Otherwise the contact will not count for either station.

## Fills:

When you are they do not get all the information and you need to get what you missed.

### How to ask for a general fill

**Them** KC5GOI (and you missed all of it)

**You F8:** AGN?

**Them** KC5GOI KC5GOI

### How to ask for a Partial Call Sign Fill

*If all you heard was*

**Them** KC5

*add the ? In the Call Box (for what you missed) so it looks like **KC5?***

**You F5:** KC5?

**Them** KC5GOI KC5GOI

### How to ask for an Exchange fill

If you missed any part of their exchange like in this example you get ?A NTX or 4A N??

**You F7:** NR?

Ask for their call sign or exchange that you missed until you get it.

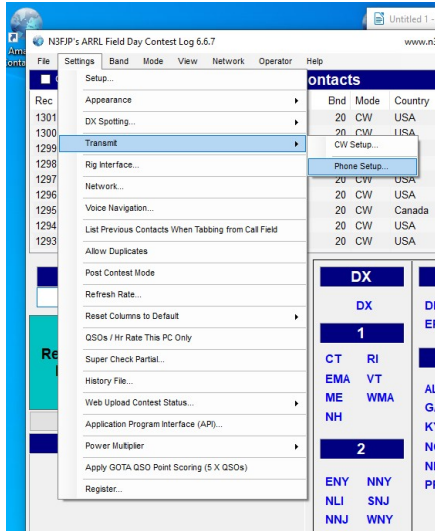
If you are asked for fills:

F4 NF4CA

F6 3A NFL

# INCIDENT BRIEFING (ICS 201)

## This is how to setup N3FJP to play audio using F-keys with the ICOM IC-7300



Follow these instructions to set up your computer and radio to transmit prerecorded messages. This will save your voice when running a contest.

For this to work you must set up the IC-7300 with recorded messages in the T1, T2, T3, and T4 locations. You could also prerecord in the T5 – T8 locations.

For SSB Phone we will record a male voice in T1-T4 and a female voice in T5-T8. So if a male or female is working the radio it will be ready.

Open N3FJP and select Settings, Transmit, then Phone Setup.

Pick your com Port, and select Rig Interface. (The sound Card option seems to be only if you have audio recordings on the computer instead of the radio.)

If you scroll down in the Description box you will find the R1 commands. The default is: RI:FEFE00E0280001FD

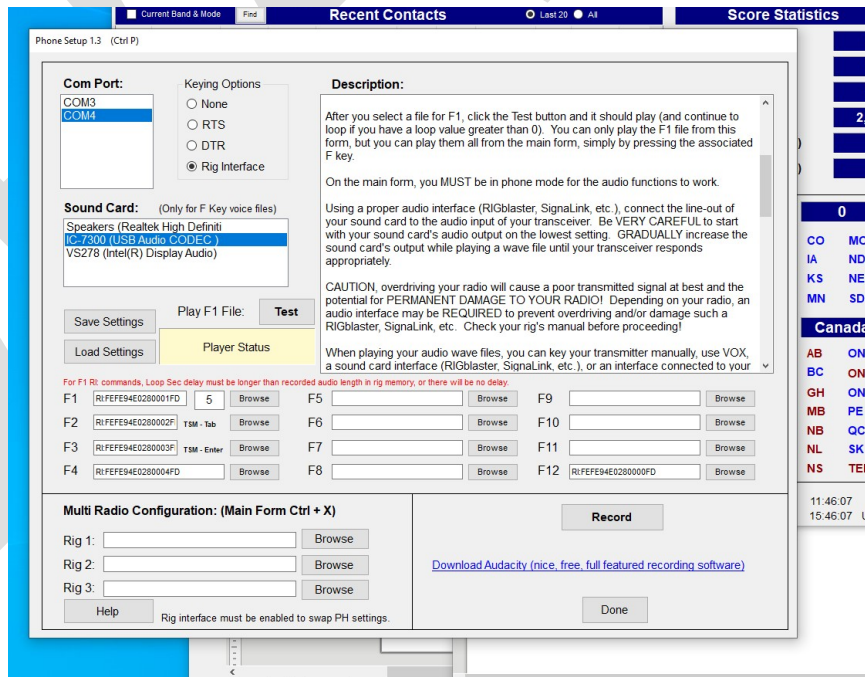
You will need to change the first 00 to the CI-V address of the radio and the default for the IC-7300 is 94. Then for each F-key you will need to change the number preceding the FD to match the number of the F-key.

So for the IC-7300 the F-keys should look like this:

F1 RI:FEFE94E0280001FD  
 F2 RI:FEFE94E0280002FD  
 F3 RI:FEFE94E0280003FD  
 F4 RI:FEFE94E0280004FD

Do the same for F5-F8 for both voices.

The F1 key will run on a loop and the timing must be worked out. The number in the box to the right of the R1 code should be greater than the length of the recording. If the recording is 3 seconds and you want a 2 second pause then type the number 5.



## INCIDENT BRIEFING (ICS 201)

The F1 audio file will continue to loop until it is stopped. You can set another F-key to stop the loop when pressed. Here we have chosen to use F12.

F12 RI:FEFE94E0280000FD

You can test the F1 key by pressing the **Test** button on the setup page. Press **Stop** to end the test,. When you have finished the setup then select the Done button and you will be ready to go. (The F-keys do not work until you exit the setup page.)

The logging software must be in focus for the keying to work.

### Running:

*This is when you find an available frequency, call CQ, make contacts and hold the frequency by doing it over and over again.*

To use this feature in "Running" a frequency you will press the F1 key on your computer keyboard. This will transmit "CQ Field Day November Foxtrot Four Charlie Alpha". There will be a pause and then it will re-transmit, over and over. You should listen during the pause to see if you get a response. When first starting on a frequency you may need to do this several times before you get a pileup.

When you get a response, press the F12 key to stop the message and use the microphone to acknowledge them by giving their call sign and then press the F2 key. This will transmit our "Three Alpha North Florida" Class.

After they send you their exchange you press the F3 key which will transmit "Thank You November Foxtrot Four Charlie Alpha". Listen for the next call sign to acknowledge and rinse and repeat. If you don't have a pileup yet, go back to the F1 key and start over. **Do not change frequency. The pileup will come!**

### Example exchange:

**YOU** F1: CQ Field Day November Foxtrot Four Charlie Alpha  
Listen  
CQ Field Day November Foxtrot Four Charlie Alpha  
Listen  
CQ Field Day November Foxtrot Four Charlie Alpha

Them KC5GOI

**YOU** F12: (stops the transmission)  
Microphone: KC5GOI  
F2: Three Alpha North Florida

Them Four Alpha North Texas

**YOU** F3: Thank You November Foxtrot Four Charlie Alpha  
Listen

## INCIDENT BRIEFING (ICS 201)

### Search and Pounce:

*This is when you are the person looking for someone calling CQ and responding to them.*

Instead of staying on one frequency, you scroll up and down the band looking for contacts. On the 7300 or other radios with a waterfall, you can see the signals and seek them out. This will require some experimenting with timing and being aggressive.

You may want to listen to the station calling CQ until you pick up their call sign and exchange before you start giving your call sign. Or if you didn't get their info before making contact don't be shy asking them for the information. Do not let them go until you have all the information. Otherwise the contact will not count for either station.

If you need to use the microphone to ask for fills because conditions are difficult and you didn't hear them well, then by all means do that.

If you need to take a break to catch up on logging, please say on frequency to stand by for a minute, catch up then give your call sign again to restart. The goal is to hold the frequency and keep getting the contacts. Don't be concerned about saying anything else, it is not a conversation.

### Fills:

How to ask for fill:

You could say "again again" after their call sign or exchange that you miss until you get it.

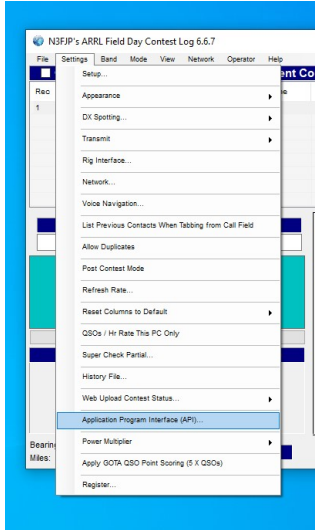
If you are asked for fills:

The most common alternatives to your phonetics could be:

November = Norway, Foxtrot = Fox, Four = Fow-er, Charlie = Canada, Alpha = Alpha

# INCIDENT BRIEFING (ICS 201)

## This is how to setup N3FJP to log with WSJT-X and GridTracker using the ICOM IC-7300



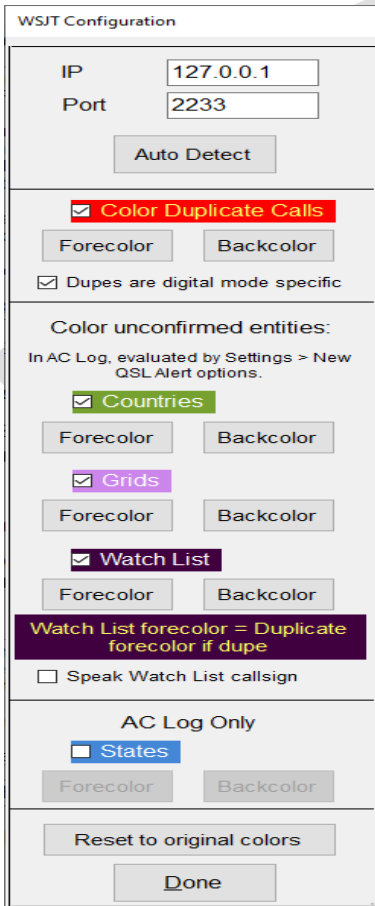
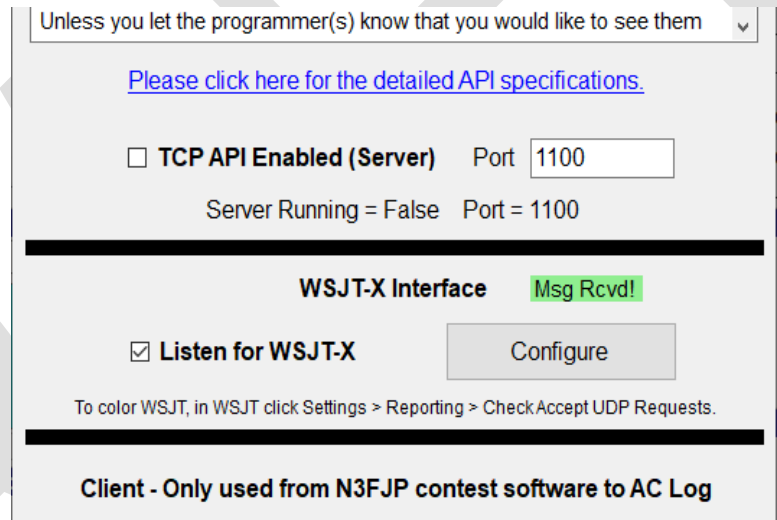
Let's start in the logging software, N3FJP. Click on Settings then open Application Program Interface (API)

The N3FJP API box will pop up. In the center of that box is what you will need to work with. (See the picture below)

Leave the TCP API box un-checked.

Put a check in the box labeled Listen for WSJT-X. (In this screen shot the Msg Rcvd! is green because I have already configured mine.)

Click the Configure button.



The box on the left then pops up and you need to set the IP to the local host which is 127.0.0.1.

The port needs to match the port you will set in WSJT-X. Here we have chosen port 2233.

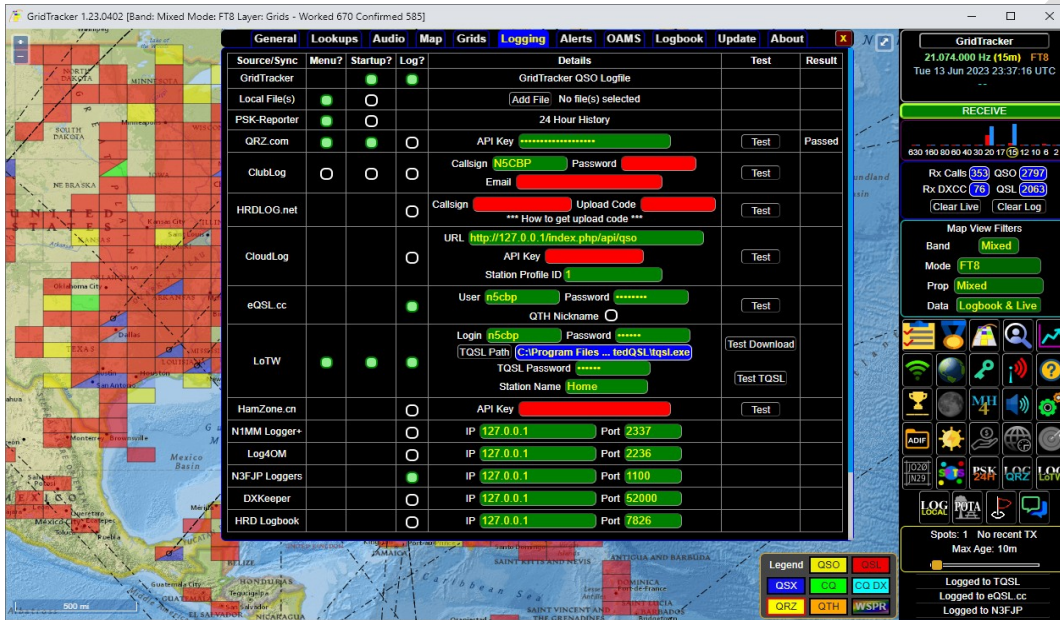
I also put a check in the box labeled Dupes are digital mode specific.

Everything else I left as default.

# INCIDENT BRIEFING (ICS 201)

In GridTracker click on the setting button, which is the green gear. Your settings button may not be in the same place as the one in this screen shot. Also the settings in this logging window are how I run my setup at home and will not all apply to your setup for Field Day.

The main item for us here is to enable N3FJP Loggers, IP of 127.0.0.1, and Port is 1100.



Settings button

Next click the General tab and in the box labeled Forward UDP Messages, set IP to 127.0.0.1, Port to 2233 and click enabled so the turns green. Notice this is the same port number as set up in the configure box in N3FJP API



# INCIDENT BRIEFING (ICS 201)

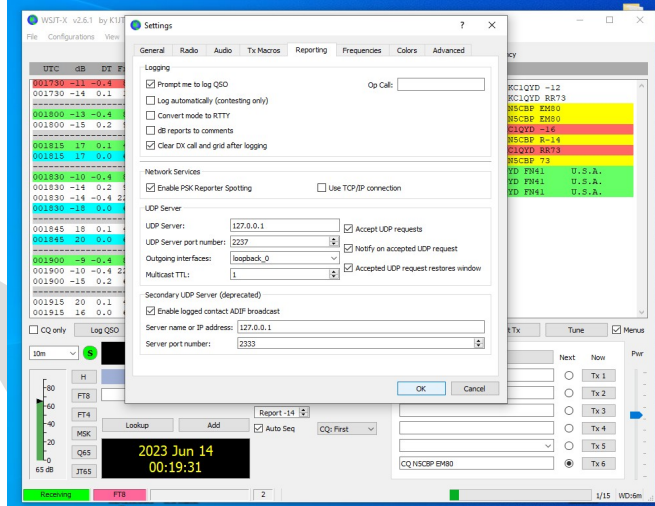
There are three areas that need attention in WSJT-X. One to work with N3FJP and two to use the Field Day protocol in the exchange.

First item here is to integrate WSJT-X with N3FJP.

In WSJT-X click on File then Settings and open the Reporting tab. There are four sections in this tab to check or change.

## Logging:

I have a check in the Prompt me to log QSO and not Log Automatically. This may be a personal preference based on if you like to confirm info before you log or automatically log to speed things up. Also put a check in Clear DX and grid after logging. Op Call: is blank



## Network Services:

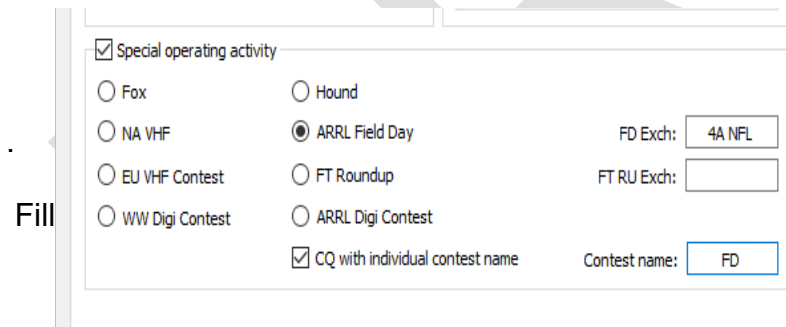
Put a check in Enable PSK Reporter Spotting, Leave Use TCP/IP blank.

## UDP Server:

Put a check in all three boxes. Server is 127.0.0.1, Port number is 2237, Interfaces is loopback\_0, and Multi cast TTL is 1

## Secondary UDP Server:

Check in Enable logged contact ADIF broadcast  
Server IP is 127.0.0.1, and Port number here is 2333  
( I am not really sure about this one since it says it is deprecated.)



On the Advanced tab:

Put a check in the Special Operating activity

Select ARRL Field Day

in the FD Exch box. In 2026 we are 3A NFL

In the General tab there are three sections.

# INCIDENT BRIEFING (ICS 201)

## Station Details:

Change your call sign to the Club Call sign for Field Day, NF4CA and set the grid to EM80pd, IARU is Region 2

## Display:

Place a check in

- Blank Line...
- Display distance in miles
- Tx messages to Rx window
- Show DXCC, grid, and...

## Behavior:

Place a check in only two places

- Double-click on call...
- Disable Tx after sending 73

The screenshot shows the 'Settings' dialog box with the following configurations:

- Station Details:**
  - My Call: NSCBP
  - My Grid: EM80PD
  - AutoGrid:
  - IARU Region: Region 2
  - Message generation for type 2 compound callsign holders: Full call in Tx3
- Display:**
  - Start new period decodes at top:
  - Blank line between decoding periods:
  - Display distance in miles:
  - Tx messages to Rx frequency window:
  - Show DXCC, grid, and worked-before status:
  - Show principal prefix instead of country name:
  - Highlight DX Call in message:
  - Highlight DX Grid in message:
- Behavior:**
  - Monitor off at startup:
  - Monitor returns to last used frequency:
  - Double-click on call sets Tx enable:
  - Disable Tx after sending 73:
  - Calling CQ forces Call 1st:
  - Alternate F1-F6 bindings:
  - CW ID after 73:
  - Enable VHF and submode features:
  - Allow Tx frequency changes while transmitting:
  - Single decode:
  - Decode after EME delay:
  - Tx watchdog: 6 minutes
  - Periodic CW ID Interval: 0

Close the settings box to save your changes by clicking the OK button.

# INCIDENT BRIEFING (ICS 201)

## Recommended Field Day Frequencies FAQ

**HF:** All operations are recommended to stay within the General class operator privileges on the 160-15 Meter HF Bands (excluding 60, 30, 17 and 12 meters), or beginning at 28.300 MHz on 10 Meters to include Technician voice privileges.

**VHF+:** All frequencies are open to Technician or higher class licensees.

---

**Digital:** Remember that Technician's cannot be control operator on Digital Modes below 10 Meters. Recommended FT8 and FT4 subbands follow:

**FT-8 Recommended Subbands (these are not the default subbands that WSJT defaults to on for each band, but are the frequency subbands used in the ARRL Digital Contest):**

1.840-1.844  
3.590-3.600 (No Digital above 3600)  
7.090-7.100  
14.090-14.100  
21.090-21.100  
28.090-28.100  
50.340 to 50.350

When choosing your operating frequency, set the radio dial at the bottom of the sub-band and QSO with stations on audio frequencies within the radio passband typically 2.5-4 kHz wide. If a sub-band becomes crowded, move the radio dial frequency up in 2 kHz increments, as needed. (For example: 7,090, 7.092, 7.094, 7.096 and 7.098). All contest queries should be directed to [contests@arrl.org](mailto:contests@arrl.org)

**FT-4 Recommended Sub-bands:**

1.836-1.840  
3.580-3.590  
7.080-7.090  
14.080-14.090  
21.080-21.090  
28.080-28.090

50.330 to 50.340 When choosing your operating frequency, set the radio dial at the bottom of the sub-band and QSO with stations on audio frequencies within the radio passband, typically 2.5-4 kHz wide. If a sub-band becomes crowded, move the radio dial frequency up in 2 kHz increments, as needed. (For example: 7.080, 7.082, 7.084, 7.086 and 7.088).

# INCIDENT BRIEFING (ICS 201)

On the Air  
arrrl.org/ota

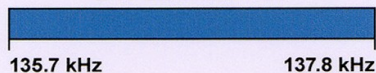
## US Amateur Radio Bands

Operator license classes: **E** = Amateur Extra **A** = Advanced **G** = General **T** = Technician **N** = Novice  
CW operation is permitted throughout all amateur bands. Except as noted, all frequencies are in megahertz (MHz).

■ = RTTY, data, phone, image   
 ■ = USB phone, RTTY, data and CW   
 ■ = RTTY and data   
 ■ = phone and image  
■ = SSB phone   
⋯ = CW only

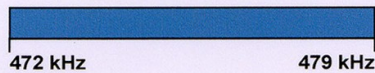
### LF – Low Frequency band

**2200 Meters (135 kHz) E,A,G**  
1 W EIRP maximum

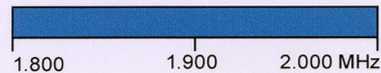


### MF – Medium Frequency bands

**630 Meters (472 kHz) E,A,G**  
5 W EIRP max, except in Alaska within 496 miles of Russia where the limit is 1 W EIRP



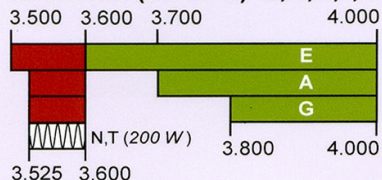
**160 Meters (1.8 MHz) E,A,G**



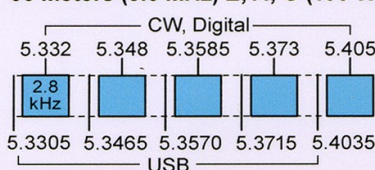
Amateurs wishing to operate on **2200 or 630 meters** must first register with the Utilities Technology Council online at <https://utc.org/plc-database-amateur-notification-process/>. You need only register once for each band.

### HF – High Frequency bands

**80 Meters (3.5 MHz) E,A,G,T,N**

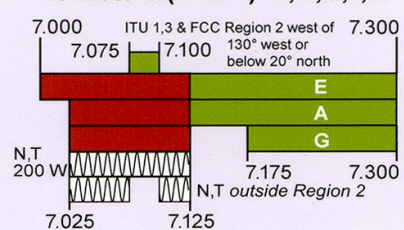


**60 Meters (5.3 MHz) E, A, G (100 W)**

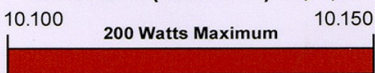


Gen, Adv, and Extra licensees may operate on a secondary basis with a maximum ERP of 100 W maximum.

**40 Meters (7 MHz) E,A,G,T,N**



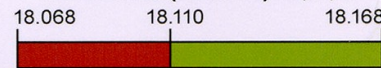
**30 Meters (10.1 MHz) E,A,G**



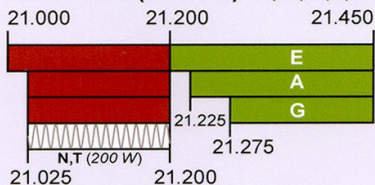
**20 Meters (14 MHz) E,A,G**



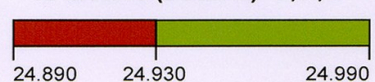
**17 Meters (18 MHz) E,A,G**



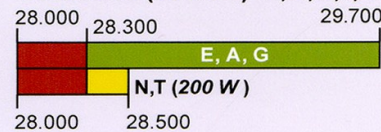
**15 Meters (21 MHz) E,A,G,T,N**



**12 Meters (24 MHz) E,A,G**

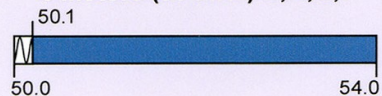


**10 Meters (28 MHz) E,A,G,T,N**

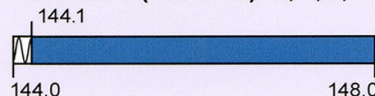


### VHF – Very High Frequency bands

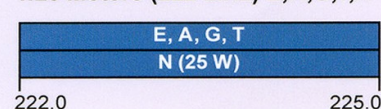
**6 Meters (50 MHz) E,A,G,T**



**2 Meters (144 MHz) E,A,G,T**

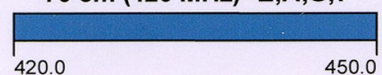


**1.25 Meters (222 MHz) E,A,G,T,N**

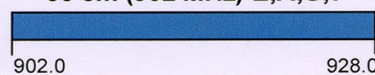


### UHF – Ultra High Frequency bands

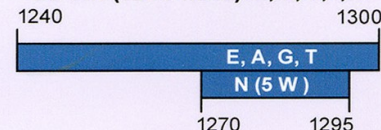
**70 cm (420 MHz) E,A,G,T**



**33 cm (902 MHz) E,A,G,T**



**23 cm (1240 MHz) E,A,G,T,N**



### SHF&EHF – Super and Extremely High Frequency bands

All licensees except Novices are authorized all modes on the following frequencies:

2300-2310 MHz	3300-3500 MHz	10.0-10.5 GHz	47.0-47.2 GHz	122.25-123.0 GHz	241-250 GHz
2390-2450 MHz	5650-5925 MHz	24.0-24.25 GHz	76.0-81.0 GHz	134-141 GHz	All above 275 GHz

See [www.arrrl.org/band-plan](http://www.arrrl.org/band-plan) for detailed band plans.

Copyright © ARRL 2020  
OTAbands rev. 1-22-20

**INCIDENT BRIEFING (ICS 201)**  
**2026 W1AW Field Day Bulletin Schedule**

Day	Mode	Pacific	Mountain	Central	Eastern	UTC
FRIDAY	CW	5:00 PM	6:00 PM	7:00 PM	8:00 PM	0000 (Sat)
	Digital	6:00 PM	7:00 PM	8:00 PM	9:00 PM	100
	Phone	6:45 PM	7:45 PM	8:45 PM	9:45 PM	145
	CW	8:00 PM	9:00 PM	10:00 PM	11:00 PM	300
SATURDAY	CW	7:00 AM	8:00 AM	9:00 AM	10:00 AM	1400
	Phone	8:00 AM	9:00 AM	10:00 AM	11:00 AM	1500
	CW	5:00 PM	6:00 PM	7:00 PM	8:00 PM	0000 (Sun)
	Digital	6:00 PM	7:00 PM	8:00 PM	9:00 PM	100
	Phone	6:45 PM	7:45 PM	8:45 PM	9:45 PM	145
SUNDAY	CW	7:00 AM	8:00 AM	9:00 AM	10:00 AM	1400
	Phone	8:00 AM	9:00 AM	10:00 AM	11:00 AM	1500
	Digital	9:00 AM	10:00 AM	11:00 AM	12:00 PM	1600

**W1AW will operate on the regularly published frequencies.**

CW frequencies are:

1.8025, 3.5815, 7.0475, 14.0475, 18.0775, 21.0675, 28.0675, 50.350 and 147.555 MHz.

Digital frequencies are:

3597.5, 7.095, 14.095, 18.1025, 21.095, 28.095, 50.350 and 147.555 MHz.

(Note: W1AW will transmit the Field Day Bulletin using 45.45 baud Baudot, PSK31 {BPSK Mode}, and MFSK16 in this mode order).

Phone frequencies are:

1.855, 3.990, 7.290, 14.290, 18.160, 21.390, 28.590, 50.350 and 147.555 MHz.

This schedule is correct at the time of publishing this packet, but be sure to check the ARRL Main News page ([www.arrl.org](http://www.arrl.org)) in case of any last-minute changes.

Revised: 4/2026

# INCIDENT BRIEFING (ICS 201)

## SAMPLE RADIOGRAM FOR FIELD DAY

NUMBER	PRECEDENCE	HX	STATION OF ORIGIN	CHECK	PLACE OF ORIGIN	TIME FILED	DATE								
06273	R		NF4CA		Lake City FL		June 27								
TO			THIS RADIO MESSAGE WAS RECEIVED AT												
My Best Friend 124 Their Street That Town, NE 12345 9125556767 MBF@gmail.com			AMATEUR STATION		PHONE										
			NAME		E-MAIL										
PHONE NUMBER			STREET												
E-MAIL			CITY, STATE, ZIP												
I	an	having	a	great											
time	at	Ham	Radio	Field											
Day	X	hope	you	are											
well	X	73													
FROM				DATE				TIME							
REC'D				SENT											
<small>This message was handled at no charge by a licensed Amateur Radio operator, whose address is shown in the box at right above. No compensation can be accepted by a "ham" operator. A return message may be filed with the "ham" delivering this message to you. Further information on Amateur Radio may be obtained from ARRL Headquarters, 225 Main Street, Newington, CT 06111 or <a href="http://www.arrl.org">www.arrl.org</a>.</small>								<small>The ARRL is the national association for Amateur Radio and the publisher of QST magazine. One of its functions is promotion of public service communication among Amateur Radio operators. To that end, the ARRL has organized the National Traffic System for daily nationwide message handling.</small>							
								1320 2/11							

