

2022 Field Day Practice Columbia County Plan

Event Plan

for APRIL 2nd and 16th, 2022

The Event Plan (Plan) gives local Section Chiefs and Field Day participants, observers, media personnel, and players from participating organizations information they need to observe or participate in the exercise. Some exercise material is intended for the exclusive use of exercise planners, controllers, and evaluators, but players may view other materials that are necessary to their performance. All exercise participants may view the Plan.

Version: 1 Mar 25,2022

D. Bradley Swartz, N5CBP

EVENT OVERVIEW

Event Name	2022 Field Day Practice
Event Dates	Saturday April 2, 2022 and Saturday April 16, 2022 (9 AM-2PM EDT)
Scope	<p>This event is a deployment, full scale exercise, planned for 5 hours at multiple locations throughout northern Florida.</p> <p>Event play is open to a very wide array of volunteers including:</p> <ul style="list-style-type: none"> – NTS or other traffic net volunteers, --volunteers participating in the 2022 Columbia County Florida Field Day, – North Florida ARRL Section Emergency Coordinator, – Alachua County ARES volunteers, --Other County ARES® volunteers, – and any other interested amateur radio operators.¹.
Mission Area(s)	RESPONSE
Core Capabilities	<p>MASS CARE SERVICES</p> <p>OPERATIONAL COMMUNICATIONS</p>
Objectives	<ul style="list-style-type: none"> 1.0 Antenna Deployment 2.0 Emergency Power 3.0 Communications Planning 4.0 VHF Voice Communications <ul style="list-style-type: none"> 4.1 Simplex contacts 4.2 Radiograms 5.0 VHF Data Communications <ul style="list-style-type: none"> 5.1 Winlink email thru RMS 5.2 Winlink email thru digipeater 6.0 HF Voice Communications <ul style="list-style-type: none"> 4.1 SSB contacts 4.2 Radiograms W4CPD, W2PH 7.0 HF Data Communications <ul style="list-style-type: none"> 5.1 Winlink email thru peer to peer 5.2 Radiogram into digital NTS 5.3 FT8 contacts 5.4 PSK31 contacts 5.5 JS8Call Relay Message exchange (optional) 8.0 Logging

¹ This exercise specifically includes a RESOURCE NET to assist unexpected volunteers with joining the exercise.

Event Name	2022 Field Day Practice
Threat or Hazard	Extreme weather event resulting in Infrastructure failure, multiple types, leading to communications failures.
Scenario	<p>Multiple days of severe thunderstorms with lightning, damaging winds and up to 5 inches of rain, has resulted in large power outages and communications systems outages.</p> <p>Flooding in the Suwannee Valley has flooded. a central switching site leading to massive loss of public switched telephone system performance and large outages to the cell-phone based communications system.</p>
Sponsor	Columbia County Amateur Radio Emergency Services
Participating Organizations	<p>Columbia County ARES®</p> <p>Columbia Amateur Radio Society</p> <p>Northern Florida ARES® Section Emergency Coordinator</p> <p>South Florida Traffic Net Manager</p>
Point of Contact	<p>D Bradley Swartz, N5CBP</p> <p>Columbia ARES Emergency Coordinator</p> <p>info.nf4ca@gmail.com</p>

GENERAL INFORMATION

Event Objectives and Core Capabilities

This exercise was designed to bring together the volunteers who are likely to participate in this years Field Day Event. It attempts to create realistic communications that would be of great value to the responding agencies and the citizens they and we serve.

There is a place for every volunteer in this exercise!

The following event objectives in Table 1 describe the expected outcomes for the exercise. The objectives are linked to specific FEMA national core capabilities, which are distinct critical elements necessary to achieve the specific mission area(s). The objectives and aligned core capabilities are guided by elected and appointed officials and selected by the Event Planning Team.

Exercise Objective	FEMA Core Capability
(1.0) Antenna Deployments. Each applicable team able to deploy emergency antennas on suitable bands for their assigned communications, within 30 minutes of a declared antenna failure. ²	Mass Care Services Operational Communications
(2.0) Emergency Power. Each applicable team able to operate from alternative power, within 30 minutes of a declared power outage, including both radio, ancillary equipment (e.g. computer, antenna tuner, etc.) and suitable lighting. ³	Mass Care Services Operational Communications
(3.0) Communications Planning. <ul style="list-style-type: none">• Amateur Resource Net assists incoming amateur radio operators who need directions to the site. All operators are specifically welcomed in this Event.• Amateur Coordination Net coordinates between amateur-based comms teams. Use VHF or HF depending on need. <p>(3.1) If more than one group participates, all groups/teams to successfully plan for communications by one or more representatives of their group to at least one Coordination Nets, depending on their licensure status.</p>	Mass Care Services Operational Communications

²

³

Exercise Objective	FEMA Core Capability
<p>(4.0) Voice Communications Accomplishments.</p> <p>(4.1) Each operator should be able to make voice contact to at least 5 stations.</p> <p>(4.2) Each operator should be able to send and receive at least one radiogram</p> <p>(4.3) Each operator to create a log of their contacts using an ICS 309 form</p>	Mass Care Services Operational Communications
<p>(4.0 Voice Communications, optional)</p> <p>(4.4) (Optional⁴) Successful voice handling and transmission of survivor written messages⁵ to loved ones out of disaster area, unless their Agency directs that such communications are prohibited. (Moving outbound survivor traffic to loved ones via the NTS or other methods is an historic method of public service by radio volunteers, and this portion of the Exercise aims to reacquaint volunteers with this valuable service..[These messages can be created by the volunteers to remote friends or relatives advising them of their participation in this Exercise and/or providing well wishes.]</p>	
<p>(5.0) Data Communications.</p> <p>(5.1) Winlink email thru RMS, for this event, use the Winlink general Welfare Message form. Compose one and send to one or more destination email addresses</p> <p>(5.2) Winlink email thru digipeater Compose and send a Winlink email to a Winlink RMS station through a digipeater.</p> <p>Successful handling and transmission of survivor written messages to loved ones out of disaster area are invaluable.</p> <p><i>NOTE: These should be transmitted using AMATEUR RADIO transmission channels.</i></p>	Mass Care Services Operational Communications

- 4 While data-based techniques for moving massive survivor messaging may be easier, those who prefer or enjoy voice-based disaster messaging are vital to a response and are expressly encouraged to proceed. Any volunteer on the net who is free may accept these simulated outgoing messages and deliver them by email or telephone immediately, or they may be routed thru the normal NTS/RRI channels if desired. The point is PRACTICE.
- 5 A suggested form is provided in Appendix D, followed by an example of this form utilized to create an ARRL Radiogram. After this form is transmitted over Radio to another volunteer in this exercise, the receiving volunteer will then deliver it via either email or telephone as soon as possible.

Exercise Objective	FEMA Core Capability
(6.0) HF Voice Communications 6.1 SSB contacts Make enough voice contacts to include at least 5 different states 6.2 Radiograms Transmit and receive a radiogram to another willing station W4CPD, W2PH	Mass Care Services Operational Communications
(7.0) HF Data Communications 7.1 Winlink email thru peer to peer 7.2 Radiogram into digital NTS 7.3 FT8 contacts 7.4 PSK31 contacts 7.5 JS8Call Relay Message exchange (optional)	Mass Care Services Operational Communications

Table 1. Exercise Objectives and Associated Core Capabilities

POST-EXERCISE AND EVALUATION ACTIVITIES

Debriefings

Post-exercise debriefings aim to collect sufficient relevant data to support effective evaluation and improvement planning.

Hot Wash

At the conclusion of exercise play, controllers facilitate a Hot Wash to allow players to discuss strengths and areas for improvement, and evaluators to seek clarification regarding player actions and decision-making processes. All participants are encouraged to attend!

Controller and Evaluator Debriefing

Section Chiefs are encouraged to attend a facilitated Debriefing via ZOOM at a date and time following the exercise to be announced.

Participant Feedback Forms

Participant Feedback Forms provide players with the opportunity to comment candidly on exercise activities and exercise design. A Google Form is available for participant feedback for the Exercise:

https://docs.google.com/forms/d/e/1FAIpQLSdFOqRRU-muZWBRJx2i83ykb1rxc6OGQpLmw1KtpZdCEza89Q/viewform?vc=0&c=0&w=1&flr=0&usp=mail_form_link

PARTICIPANT INFORMATION AND GUIDANCE

Event Scenario – Columbia County

The purpose of this planned Event is to prepare for this years ARRL Field Day which will be held on June 25-26, 2022.

Field Day is always the last full weekend in June. It's purpose is to test the Amateur Radio Operator's ability to set up communications in the event of an emergency. This is why we are encouraged to set up in a remote site and use some sort of power that does not depend on the commercial mains.

Last year we held our Field Day at Alligator Lake Park in Lake City. We will be back there this year.

It is an excellent opportunity to expose the public to what Amateur Radio can do!

There are available points for contacts made and various bonus points for other activities.



Many of our operators have varying amounts of experience in remote operation, so we come together to help each other learn.

This year our practice will be divided into two different times at the same location. The first practice will be on Saturday April 2, 2022 and will cover VHF. The second practice will be Saturday April 16, 2022 and will cover HF.

We will practice setting up the trailer mounted tower with VHF antennas. For HF we will string some wire antennas in the trees available at the location.

Both days we will get on the air. We will practice SSB voice contacts, Radiograms, Winlink email, FT8, and PSK31.

There will be plenty of opportunity for all interested operators. If you have a friend that is interested bring them along.



Exercise Rules

- The following general rules govern exercise play:
- Real-world emergency actions take priority over exercise actions.
- Exercise players will comply with real-world emergency procedures, unless otherwise directed by the control staff.
- All communications (including written, radio, telephone, and e-mail) during the exercise that might include some disaster type language, will begin and end with the statement TEST EXERCISE MESSAGE or similar.

Players Instructions

Players should follow certain guidelines before, during, and after the exercise to ensure a safe and effective exercise.

Before the Event

Review appropriate organizational plans, procedures, and exercise support documents.

Leadership for each participating group should provide The Controllers with information on proposed frequency assignments or corrections to suggested ICS-205 entries. (Please carefully study Appendix A, Exercise Schedule)

You may wish to follow a "checklist" of preparation to become more ready for this exercise. Some suggested items include:

Check Off	Preparation Item
<input type="checkbox"/>	Have you been asked to bring something, or have you volunteered to bring something?
<input type="checkbox"/>	Have you received an ICS-205 giving any local frequencies that will be utilized?
<input type="checkbox"/>	Do you have suitable antennas plus the ability to install them in timely fashion?
<input type="checkbox"/>	Do you have backup power available? Will it include LIGHTING?
<input type="checkbox"/>	Are you able to check your output power?
<input type="checkbox"/>	Are you able to create the necessary voice or digital modulations?
<input type="checkbox"/>	For data operations, can you successfully operate

	your computer simultaneously with your radio, or are there lockup or interference issues?
<input type="checkbox"/>	Are you familiar with the FORMS that are requested to be used in this Exercise?
<input type="checkbox"/>	Are you familiar with the software and systems that may be required during this Exercise?
<input type="checkbox"/>	If you are fulfilling a leadership role, do you have what you need to accomplish your role?
<input type="checkbox"/>	Have you reviewed the Message forms and possibly already completed one or more? This is a useful familiarization process.
<input type="checkbox"/>	Do you have a copy of band plans available to you?
<input type="checkbox"/>	
<input type="checkbox"/>	Have you or your local leader registered your planned participation?
<input type="checkbox"/>	
<input type="checkbox"/>	Last minute review of the Exercise Plan or Incident Action Plan?

During the Event

Media / Guests: If you are asked an exercise-related question, give a short, concise answer. If you are busy and cannot immediately respond, indicate that, but report back with an answer as soon as possible.

If you do not understand the scope of the event, or if you are uncertain about an organization's participation in an exercise, ask a Section Chief.

Parts of the scenario may seem implausible. Recognize that the exercise has objectives to satisfy and may require doing something new to you. Every effort has been made by the exercise's trusted agents to balance realism with safety and to create an effective learning and evaluation environment.

This event is not designed to contain any disaster related language. However, if it did then all exercise written communications will begin and end with the statement “**This is an exercise.**” (or similar); voice radio communications will include this at least as often as identifications. This precaution is taken so that anyone who overhears the conversation will not mistake exercise play for a real-world emergency.

Maintain an ICS-214 log of your activities. Many times, this log may include documentation of activities that will be helpful in planning for future events.

Maintain an ICS-309 (or be able to have one or parts of one created by a computer) to document messages received or transmitted.

After the Event

Participate in the Hot Wash at your venue with controllers and evaluators.

Complete the Participant Feedback Form. This form allows you to comment candidly on emergency response activities and exercise effectiveness. Provide the completed form to a controller or evaluator. (This will be a Google Form)

Provide any notes or materials generated from the exercise to your controller or evaluator for review and inclusion in the AAR. Your ICS-214 and ICS-309 (or copies thereof) should go to your local leader or if you are not part of a group, directly to the Exercise Director by either email at

info.nf4ca@gmail.com

Appendix A: Event Schedule

First Due Date	Personnel	Activity	Location
NOW	<ul style="list-style-type: none"> ■ Leadership of groups ■ Exercise leaders (e.g. NCS) ■ INDIVIDUALS who are NOT part of any organized group 	Register yourself on this Google Form: https://docs.google.com/forms/d/e/1FAIpQLSdecnCLdDquRvrAvkYQ1AqZaADQuDrHBbh3P4nJnhkBosvqKQ/viewform?vc=0&c=0&w=1&flr=0&usp=mail_form_link	
Thursday before each event on Saturday	All interested participants	Check in to the Columbia ARES Thursday night Net	146.940 repeater, PL 123.0

Final Exercise Materials Date	Personnel	Activity	Location
Thursday March 31 2022	Exercise Director	Final Exercise Documents including group ICS-205 / ICS-205A document(s) will be sent by email to all known participant groups. (You can also provide me with contact information through the Google Form: https://docs.google.com/forms/d/e/1FAIpQLSdecnCLdDquRvrAvkYQ1AqZaADQuDrHBbh3P4nJnhkBosvqKQ/viewform?vc=0&c=0&w=1&flr=0&usp=mail_form_link	By email to all known participants
Thursday Mar 31 and April 14 7 PM	Any interested participant	Check into the Columbia ARES Net to go over the entire Exercise briefing, and answer any questions.	WA4ZFQ repeater, 146.940, PL 123.0

Exercise Date / Time	Personnel	Activity	Location
Saturday April 2 and April 16	All participants	Arrive at Practice location between 0900 -0930	Exercise participant location.
Saturday April 2 and April 16	All participants	Begin setting up antennas and stations at 0930	Exercise participant location.
<p style="text-align: center;">EVENT BEGINNING 0930 – 1030</p>			
Saturday April 2 and April 16 2022 0830	Leadership of each group.	<p><u>Initiate Net Control</u> Leadership constitute Coordination Nets and Resource Net(s) as assigned and commence activities.</p> <p>NOTE For the entire exercise there will be Resource and Command Nets on HF frequencies. However, if a local group has deployed assets within their county, VHF control would be more appropriate locally, and information should have been provided within their ICS-205 planning materials submitted earlier; such local nets are expected and encouraged, but be certain to have representation in the Exercise HF net.</p>	Exercise participant location
Saturday April 2 and April 16 2022 0930	<p>Logistics All participants without any other assignment</p>	<u>Set up Antennas</u>	Exercise participant location

Event Plan (Plan)

Exercise Date / Time	Personnel	Activity	Location
Saturday April 2 and April 16 2022 1000	Participants with data communications capability	<u>Data Communications Status Check</u> Each participant or group capable of data communications (e.g. WINLINK, JS8, WiFi network) will test all possible data communications systems beginning at 10 AM	
Saturday April 2 and April 16 2022 1000	Participants without data communications capability	<u>Voice Status Report</u> Send via voice communications a status report denoting their status, to the Director.	
EVENT SESSION TWO: 10:30 AM-12:30 PM EDT Things May Get More Interesting!			
Saturday April 2 and April 16 2022 1030 - 1045	Operations	Determine who need training in the various modes and assign operators to a training session.	Dispersed
1045 - 1230	All participants without any other assignment	Begin Making and Logging Voice contacts	Dispersed
	All participants needing training	Report to the appropriate training location	Dispersed
EVENT SESSION THREE: 12:30 -2:00 PM EDT			
Saturday April 2 and April 16 2022 1215 - 1230	All leadership	Assist operators in transitioning from Voice to Data	Dispersed
Saturday April 2 and April 16 2022 1230 - 1400	All participants	Make contacts using the various Data modes assigned.	Dispersed

Event Plan (Plan)

Hotwash	Personnel	Activity	Location
Saturday April 2 and April 16 2022 1400- 1500	All Participants	Assist in tear down and clean up. Participate if possible in brief post-Exercise Hotwash.	Exercise participant location.
Online Anonymous Evaluation	All Participants	Google Form to give your evaluation of the Exercise: https://docs.google.com/forms/d/e/1FAIpQLScI3FE2IKs52uFN_C5Z2q-LpdQecUg_Te9LU82WQsqadW5AWg/viewform?vc=0&c=0&w=1&flr=0&usp=mail_form_link	

Appendix B: Exercise Participants

Participating Organizations	
Federal	
State	
Nth FI Section Emergency Coordinator Arc Thames, W4CPD	
Sth FI Section Traffic Manager Ed Johnson, W2PH	
NGO	
Local	
Columbia County ARES	
Columbia Amateur Radio Society	
Possible additional ARES® /County EM groups	

Appendix C: Communications Plan

INCIDENT RADIO COMMUNICATIONS PLAN ICS-205

INCIDENT RADIO COMMUNICATIONS PLAN (ICS-205)										
1. Event Name: 2022 Field Day Practice			2. Date/Time Prepared: Date: March 26 Time: 1500 LOCAL			3. Operational Period Date From: April 2 Date To: April 16 Time From: 0900EDT Time To: 1400EDT				
4. Basic Radio Channel Use:										
Zone e Grp.	Ch #	Function	Channel Name / Trunked Radio System Talkgroup	Assign- ment	RX FREQ N or W	RX TONE / NAC	TX FREQ N or W	TX TONE / NAC	Mode (A, D, or M)	Remarks
	1	Inter OP Net	IOP1	Ham	3.815 MHzLSB	None	3.810 MHzLSB	None	A	Coordination net
	2	Inter OP Alternate	IOP2	Ham	7.242 MHzLSB	None	7.242 MHzLSB	None	A	Alternate for Coordination net
	3	HF Voice	80	Ham	3.6-4.0 MHzLSB	None	3.6-4.0 MHzLSB	None	A	As Band Conditions Permit
	4	HF Voice	40	Ham	7.125- 7.3 MHzLSB	None	7.125- 7.3 MHzLSB	None	A	As Band Conditions Permit
	5	HF Voice	20	Ham	14.150- 14.350 Mhz USB	None	14.150- 14.350 Mhz USB	None	A	As Band Conditions Permit
	6	HF Voice	10	Ham	28.300- 29.700 Mhz USB	None	28.300- 29.700 Mhz USB	None	A	As Band Conditions Permit
	7	Winlink	WIN	Ham	TBD	None	TBD	None	D	Per WINLINK RMS Channels for appropriate service
	8	Peer Winlink	PEERWIN	Ham	3.585 MHzUSB	None	3.585 MHzUSB	None	D	DIAL FREQ (use 500 Hz modes if possible)
	9	PSK Data	PSK	Ham	3.579 MHzUSB	None	3.579 MHzUSB	None	D	(use any offset within passband, but avoid W1AW code practice at 3581.5 kHz)
	10	JS8 Data	JS	Ham	3.578 MHzUSB	None	3.578 MHzUSB	None	D	(use any offset within passband but avoid W1AW code practice at 3581.5 kHz)
5. Special Instructions										
<ul style="list-style-type: none"> Use Channel Name to identify frequencies if moving from interference. 										
6. Prepared By (Communications Unit Leader) Name Brad Swartz N5CBP Signature /s/										
ICS 205				IAP PAGE				Date / Time Mar 6 1355 EDT		

GLG 5/2018 Communications Plan

INCIDENT RADIO COMMUNICATIONS PLAN ICS-205

INCIDENT RADIO COMMUNICATIONS PLAN (ICS-205)										
1. Event Name: 2022 Field Day Practice				2. Date/Time Prepared: Date: March 26 Time: 1500 LOCAL				3. Operational Period Date From: April 2 Date To: April 16 Time From: 0900EDT Time To: 1400EDT		
4. Basic Radio Channel Use:										
Zon e Grp.	C h #	Function	Channel Name / Trunked Radio System Talkgroup	Assign- ment	RX FREQ N or W	RX TONE / NAC	TX FREQ N or W	TX TONE / NAC	Mode (A, D, or M)	Remarks
	1	Resource Net	RES1	Ham	146.940	None	146.340	None	A	Resource check-in net
	2	Resource Alternate	RES2	Ham	444.875	123.0	449.875	None	A	Alternate for Resource check-in net
	3	Inter OP Net	IOP	Ham	146.420	123.0	146.420	None	A	Coordination Net
	4	VHF Voice	V6	Ham	50.1- 54.0 Mhz	None	50.1- 54.0 Mhz	None	A	As Band Conditions Permit
	5	VHF Voice	V2	Ham	144.100	None	148.000	None	A	As Band Conditions Permit
		Winlink	WIN DIGI	Ham	145.070	None	145.070	None	D	NF4CA-7, KN4YGT-7, N5CBP-7, KX4Z-7
	6	Winlink	WIN RMS	Ham	145.070	None	145.070	None	D	KN4YGT-10, N5CBP- 10, KX4Z-10
	7	Peer Winlink	PEERWIN2	Ham	144.060	None	145.060	None	D	May need to adjust frequency +/- 0.010
	8	National Call Freq	NatCall	Ham	146.520	None	146.520	None	A	National Call Frequency
	9									
	10									
5. Special Instructions • Use Channel Name to identify frequencies if moving from interference.										
6. Prepared By (Communications Unit Leader) Name Brad Swartz N5CBP Signature /s/										
ICS 205				IAP PAGE				Date / Time Mar 6 1355 EDT		

Appendix D: Suggested Forms & Usage Examples

Groups or participants may utilize these suggested forms or any suitable replacement.

Note that the Winlink auto-generated ICS-309 may be submitted as all or part of the required ICS-309 communications logging.

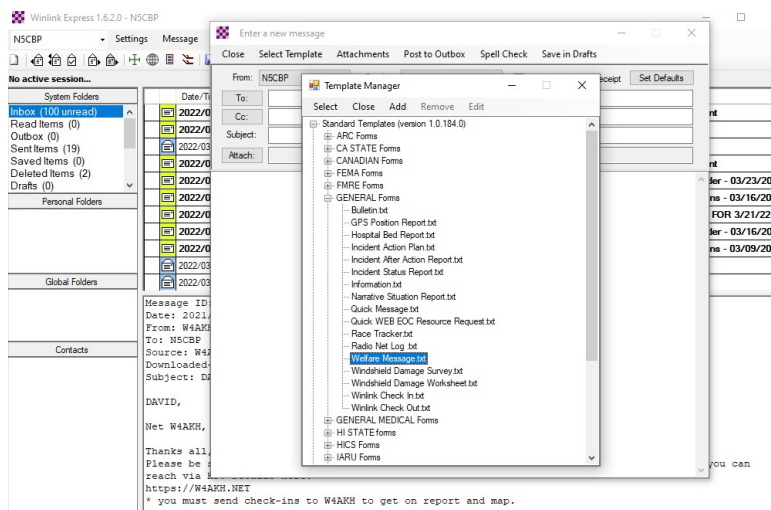
EXAMPLE OF QUICK HEALTH AND WELFARE MESSAGE

Quick Health & Welfare - Status or Information Message		Vers 1.8
<p>This form is used to send information or a status report to family members or friends via Winlink E-Mail.</p> <p><i>Suggest more than one E-Mail address to increase the chances that someone will get this message.</i></p>		
<p>>> NO REPLY is expected, nor can be processd. The requester needs to be informed this is a ONE WAY outbound message.. <<</p> <p>Operator Info - Read Please</p> <p>Load Quick H&W data</p>		
From Name	Henry Winkler	Date / Time (Local) 2022-3-26 10:50
To Email (s)	mom@hermail.com; brother@hismail.com	
Incident / Event Location or Region / Area Name	Lake City Park	
<p>Message</p> <p>Having fun today practicing new things with ham radio</p>		
Save Quick H&W data Submit Reset Form	<p><i>The message is formatted as plain text in the body of the sent email, and easy to read by the recipient (s).</i></p>	

This can be found in Winlink.

Click Message, New Message, Select Template, Standard Templates, GENERAL Forms, Welfare Message.txt, Select.

Form will open in web browser to be filled in. Then Submit and Post to Out Box. Send when ready.



WINLINK INCIDENT STATUS REPORT

INCIDENT STATUS REPORT		
<div style="display: flex; justify-content: space-between; align-items: center;"> Setup Click to add your agency or group Load Incident Status data Form Info </div>		
1. Incident Name: <input style="width: 90%;" type="text"/>	2. WebEOC Incident (as applicable): <input style="width: 90%;" type="text"/>	
3. Incident Date/Time: <input style="width: 90%;" type="text"/>	4. Report Version (Check one): <input checked="" type="radio"/> Initial <input type="radio"/> Update <input type="radio"/> Final	
5. Type of Incident (Check all that apply):		
<input type="checkbox"/> Severe Storm/Flood	<input type="checkbox"/> Pre-Planned Event	<input type="checkbox"/> HAZMAT
<input type="checkbox"/> Severe Winter Weather	<input type="checkbox"/> Dam/Levee	<input type="checkbox"/> Utility Disruption
<input type="checkbox"/> Public Health	<input type="checkbox"/> Active Threats/Civil Disturbance	<input type="checkbox"/> Earthquake
<input type="checkbox"/> Fire	<input type="checkbox"/> Aircraft Disaster	<input type="checkbox"/> Other (Specify): <input style="width: 80%;" type="text"/>
6. Situation Summary as of Time of Report: <div style="border: 1px solid black; height: 20px; width: 100%; margin-top: 5px;"></div>		
7. Future Outlook/Goals/Needs/Issues: <div style="border: 1px solid black; height: 20px; width: 100%; margin-top: 5px;"></div>		
8. County Emergency Operations Center (EOC) Status (Check one):		
<input checked="" type="radio"/> Closed	<input type="radio"/> Activated Hours of Operation: <input style="width: 80%;" type="text"/>	<input type="radio"/> Monitoring (minimal staffing) Hours of Operation: <input style="width: 80%;" type="text"/>
9. Local Disaster Declaration Status (Check one):		
<input checked="" type="radio"/> No declaration/Declaration not anticipated	<input type="radio"/> Declaration anticipated	<input type="radio"/> Local disaster declaration Date/Time of declaration: <input style="width: 80%;" type="text"/>
10. Number of Confirmed Incident Injuries: <input style="width: 80%;" type="text"/>	11. Number of Confirmed Incident Fatalities: <input style="width: 80%;" type="text"/>	
12. Number and Location(s) of Shelters Established: <div style="border: 1px solid black; height: 20px; width: 100%; margin-top: 5px;"></div>		
13. Have Evacuations Been Implemented?		
<input checked="" type="radio"/> No / None anticipated	<input type="radio"/> Yes (If yes, describe):	<input type="radio"/> Evacuations anticipated (Describe):
	<div style="border: 1px solid black; height: 20px; width: 100%; margin-top: 5px;"></div>	
14. Date/Time of Report: <input style="width: 90%;" type="text"/>	15. Report Submitted By: <input style="width: 90%;" type="text"/>	16. Contact Info: <input style="width: 90%;" type="text"/>
<div style="display: flex; justify-content: space-around; align-items: center;"> Save Incident Status data Submit Reset Form Version 2.3 </div>		

Amateur Radio "Radiogram"																	
NR 133	PRECED W	HX	Stn of Origin K4AAA	Check 17	Place of Origin NEWTOWN	Time Filed	Date Filed MAR 19										
<div style="display: flex; justify-content: space-between;"> <div style="width: 45%;"> <p>Addressed TO:</p> <p><u>TOM JONES</u></p> <p>_____</p> <p>_____</p> <p>email <u>TJONES12@GMAIL.COM</u></p> <p>phone <u>123 456 7891</u></p> </div> <div style="width: 50%;"> <p>Message Received At:</p> <p>Station: _____ Phone: _____</p> <p>Name/Addr: _____</p> <p>_____</p> <p>_____</p> </div> </div> <p><BT></p> <p>TEST EXERCISE MESSAGE X TRYING OUT THIS HAM RADIO NETWORK</p> <p>X HOPE THIS MESSAGE FINDS YOU WELL</p> <p><BT></p> <p>SIGNATURE: <u>SUE SMITH</u></p>																	
<table style="width: 100%; border: none;"> <tr> <td style="width: 30%;">RCVD FROM</td> <td style="width: 20%;">DATE</td> <td style="width: 10%;">TIME</td> <td style="width: 20%;">SENT TO</td> <td style="width: 20%;">DATE</td> </tr> <tr> <td>TIME</td> <td></td> <td></td> <td></td> <td></td> </tr> </table>								RCVD FROM	DATE	TIME	SENT TO	DATE	TIME				
RCVD FROM	DATE	TIME	SENT TO	DATE													
TIME																	

EXAMPLE OF A SURVIVOR MESSAGE TRANSMITTED AS AN ARRL RADIOGRAM

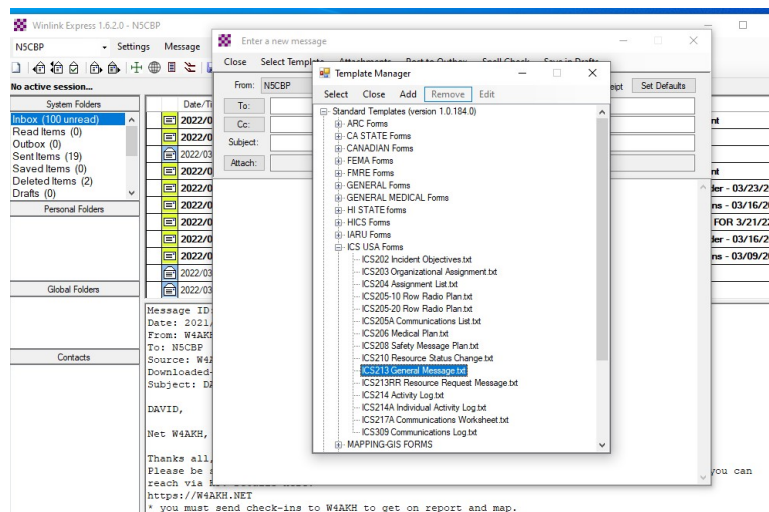
EXAMPLE OF EMAIL ICS 213

General Message (ICS 213)			
Load ICS213 INITIAL Data		Form Instructions	
1. Incident Name: <input type="text" value="2022 Field Day Practice"/>			
2. To (Name/Position): <input type="text" value="Brad Swartz / AEC"/>			
3. From (Name/Position): <input type="text" value="Henry / operator"/>			
4. Subject: <input type="text" value="training"/>		5. Date: <input type="text" value="2022-03-26"/>	6. Time: <input type="text" value="11:15"/>
7. Message: <div><p>We are learning how to send various forms in Winlink</p></div>			
8. Approved by: <input type="text" value="Alice W Smith"/>		Position / Title: <input type="text" value="big boss"/>	
Save ICS213 INITIAL Data		Submit	Reset Form
			Ver 41.11

This can be found in Winlink

Click Message, New Message, Select Template, Standard Templates, ICS USA Forms, ICS213 General Message.txt, Select.

Form will open in web browser to be filled in. Then Submit and Post to Out Box. Send when ready.



ICS-205A

[illegible]

[illegible]

ACTIVITY LOG (ICS 214)

1. Incident Name:		2. Operational Period: Date From: Date To: Time From: Time To:	
3. Name:		4. ICS Position:	
		5. Home Agency (and Unit):	
6. Resources Assigned:			
Name		ICS Position	
7. Activity Log:			
Date/Time	Notable Activities		
8. Prepared by: Name: _____ Position/Title: _____ Signature: _____			
ICS 214, Page 1		Date/Time: _____	

VERSION	Date of Release	Significant Changes
1.0	March 26 2022	First Draft
1.2	March 27 2022	Combined some objectives, eliminated some duplicates
-	-	Removed some unnecessary verbiage