

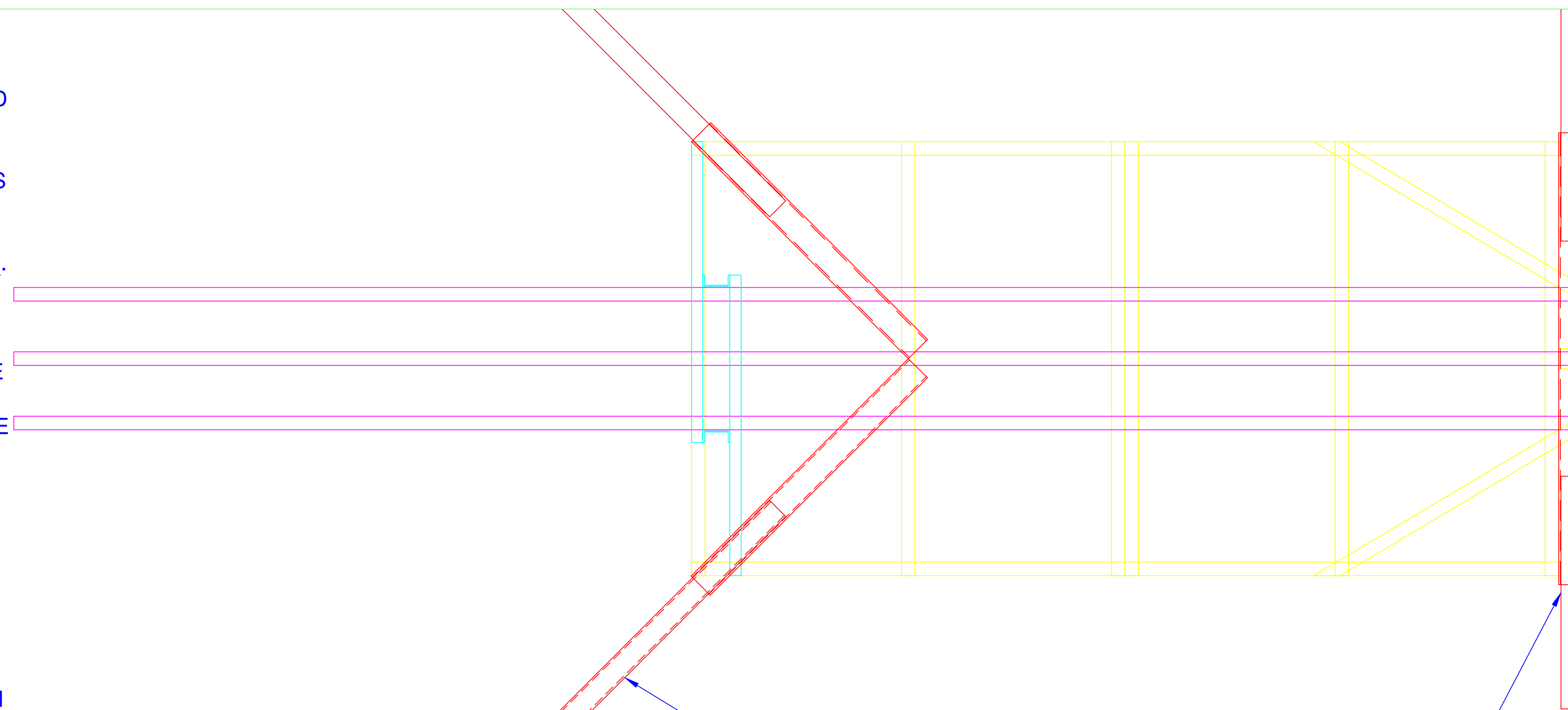
NOTES:

1. TOWER CAN BE INSTALLED AND REMOVED QUICKLY AND EASILY BY JUST **TWO PEOPLE**.
2. RETRACTABLE/EXTENDABLE OUTRIGGERS WITH JACKS WILL **PROVIDE STABILITY**. WILL ALSO ADD WEIGHT CLOSER TO THE GROUND TO **LOWER CENTER OF GRAVITY**.
3. TOWER PIVOT POINT AND TOWER MOUNTING WAS THE **MOST IMPORTANT CONCERN** SINCE THE TOWER WAS NOT DESIGNED BY THE MANUFACTURER TO BE TRAILER MOUNTED.
4. 'TOWER PIVOT' AND 'PEDESTAL PIVOT' ARE TWO PIECES THAT NEED TO BE FABRICATED. BOTH WILL **WORK TOGETHER** TO STABILIZE THE PEDESTAL, SECURE THE TOWER, AND ALLOW TOWER RAISING AND LOWERING.
5. DESIGNED AROUND SOME **FREE MATERIALS (CYAN)**.
6. I HAVE PURCHASED THE RUBBER BOW PADS THAT WILL BE MOUNTED ON THE TOWER REST TO SUPPORT THE TOWER IN THE LOWERED POSITION.

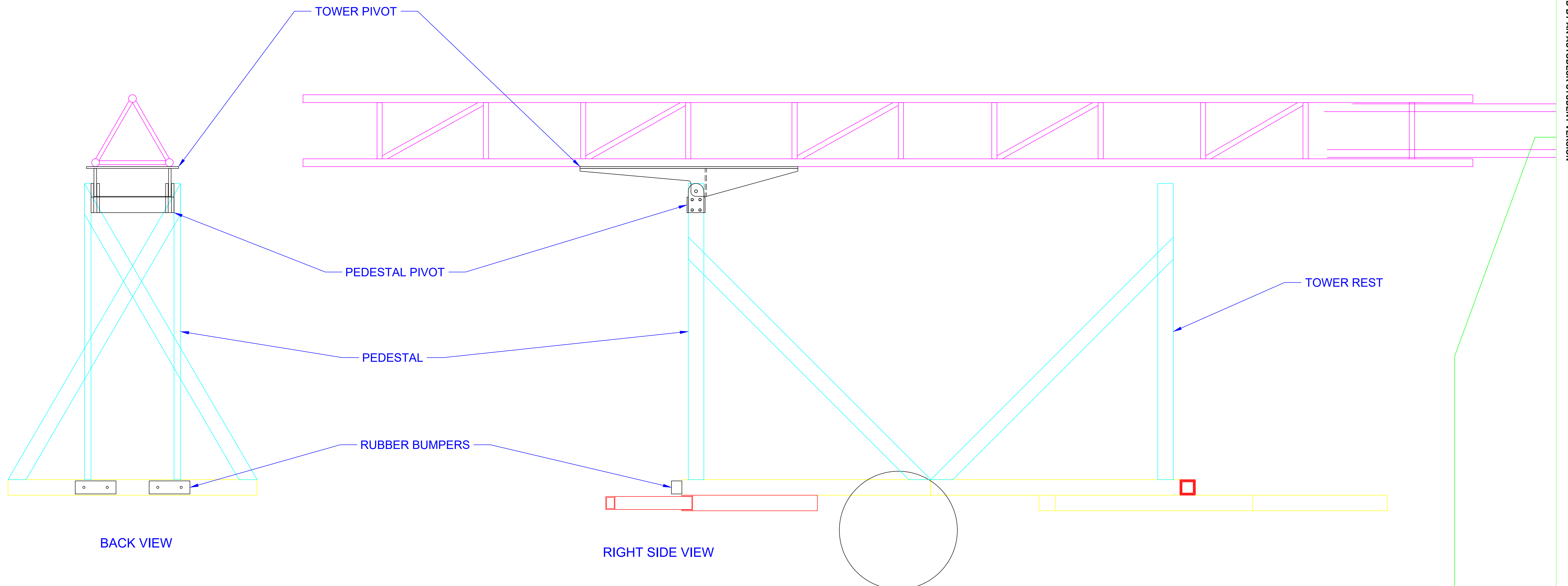
NOTES CONTINUED:

7. **WORKING ON:**

- 7.1. SPECIFYING AND SOURCING PRODUCTS TO BE **PURCHASED** (JACKS, SQUARE TUBING FOR OUTRIGGERS, STRAP U-BOLTS TO SECURE TOWER TO TOWER PIVOT, OTHER HARDWARE..)
- 7.2. **MOUNTING OUTRIGGER TUBING TO TRAILER.**
- 7.3. MOUNTING **RUBBER BOW PADS** TO PEDESTAL TO SUPPORT TOWER IN THE LOWERED POSITION.
- 7.4. GETTING **QUOTE(S)** TO FABRICATE TOWER AND PEDESTAL PIVOTS.
- 7.5. TOWER **RAISING AND LOWERING** (VIA MANUAL WINCH?).
- 7.6. **LOCKING TOWER** IN RAISED AND LOWERED POSITION.



TOP VIEW



BACK VIEW

RIGHT SIDE VIEW