

FIELD DAY CONTACT SUGGESTIONS: FT8/FT4 Alachua County ARES(R) / NFARC

Enter yourself as the operator into the Logging System -- click "Operator" and enter call and initials:

Field Day Contest Log 6.5 www.n3fjp.com

Mode View Network **Operator** Help

Find Recent Contacts Last 20

Class	Sec	Date / Time	Bnd	Mode	Country	Initials
1D	SF	06/28 17:01	40	DIG	USA	LG
3D	NC	06/28 17:00	40	DIG	USA	LG
1E	AL	06/28 16:59	40	DIG	USA	LG
1E	GA	06/28 16:53	40	DIG	USA	LG
1D	TN	06/28 16:47	40	DIG	USA	LG
1D	NC	06/28 16:44	40	DIG	USA	LG
1D	NFL	06/28 16:40	40	DIG	USA	LG
1E	NC	06/28 16:38	40	DIG	USA	LG
1D	NC	06/28 16:36	40	DIG	USA	LG

Class **Section**

Operator W4UFL
Initials JC
Done

CT **VT** **AL** **SC**
EMA **WMA** **GA** **SFI**
ME

Please select your band and mode from the menu!
Logging waiver rule enabled (from Settings).

Set your BAND and MODE -- Click on BAND to pick the band, and click on MODE to select DIGITAL.

All digital contacts (FT8/FT4/RTTY/PSK31 etc) are equivalent. Only CW and SSB are different modes.

Deeper Reading

This is a highlight guide to operating FT8/FT4 in Field day. For more tips:

https://www.physics.princeton.edu/pulsar/K1JT/FT8_Operating_Tips.pdf

<https://physics.princeton.edu/pulsar/k1jt/wsjsx-doc/wsjsx-main-2.2.1.html>

We use THREE pieces of software to allow semi-automated logging which makes it very, very easy.

1. Get **N3FJP Field Day Contest Log** started on your computer -- the logging computer should have already been entered. If you click on NETWORK you can see all the stations listed and what bands/modes they are currently using, as a check on your connection.
2. Get **WSJT-X** (provides FT8/FT4 coding/decoding) started on your computer. Click to select your BAND -- the computer will automatically put your radio on the correct starting frequency. (You can wander a bit as discussed below if the bands are completely chock full)

3. Get **JTAlert** started on your computer. This is the "glue" intermediary program between WSJT-X and the N3FJP Contest Log.

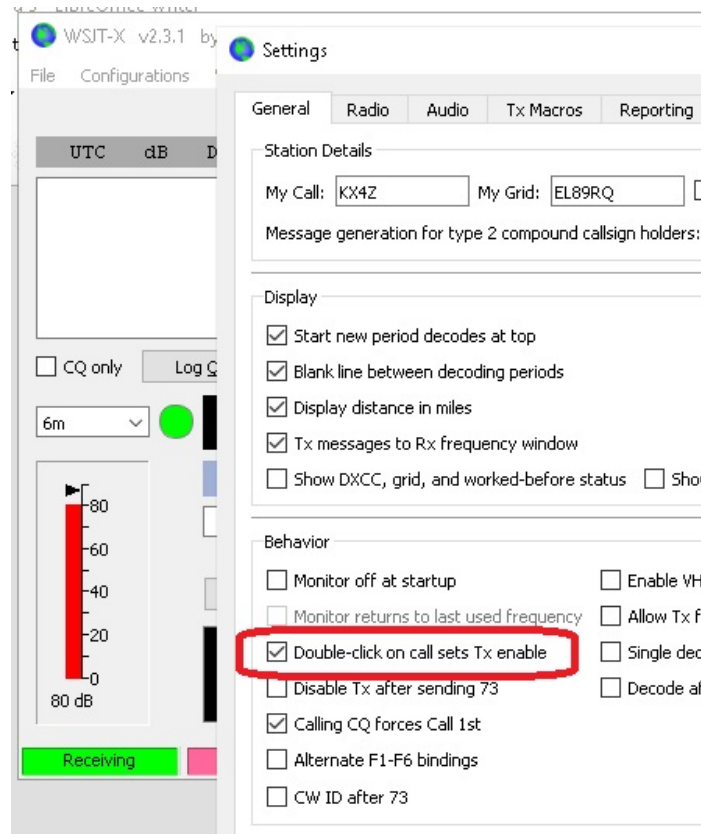
Bring WSJT-x to the front, you'll be using it for almost everything.

Select your mode, generally FT8 or FT4.

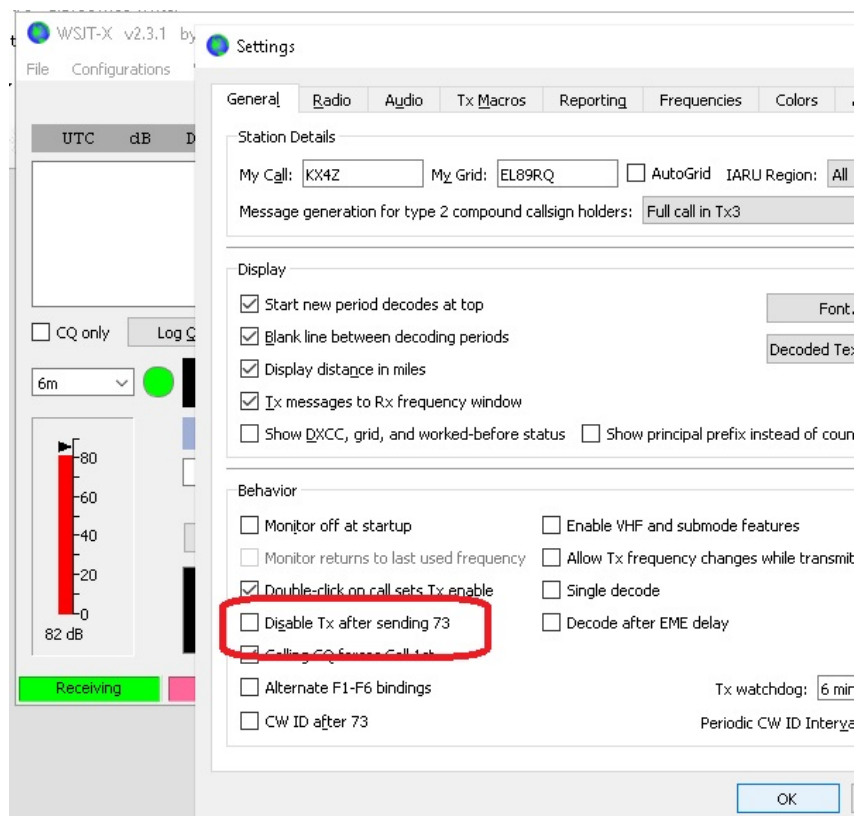
PUT YOUR TRANSMITTER ON A CLEAR SPOT SOMEWHERE: SHIFT-LEFT CLICK to set the RED (transmit) bracket on a clear spot. If the entire band is full, you may have to move the transmitter dial 500Hz lower or maybe a kHz or 2 higher to get more room.

Basic WSJT-X Application Settings

- **TX even/1st** -- of benefit if you are calling CQ. Irrelevant if you are hunting and pouncing. 1 generally click to select HOLD TX FREQUENCY. Everyone decodes their entire passband, so if you are in their passband, they will decode you. **More important to keep your transmitter at a CLEAR SPOT.**
- **Hold Tx Frequency** -- a good idea to find a CLEAR TX (red bracket, SHIFT-leftclick) FREQUENCY and stay there.
- **Auto Seq** -- generally you want it autosequencing the contact info for you
- **Call 1st** -- if you are calling CQ this chooses the first-decoded to respond to.
- **Double Click on a Station Enables TX:** will make hunting and pouncing a lot easier: Setting so that if you double click on a station calling CQ, it automatically enables TRANSMIT to answer them: FILE | Settings | General



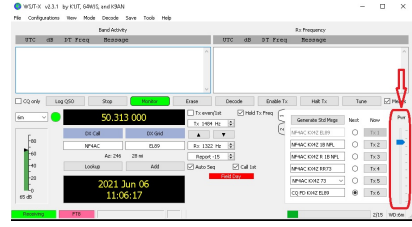
- **Allow Immediate Retransmit** -- UNCLICK the Disable TX after sending 73 will likely be your plan if you are calling CQ.



Setting up the Transmitter:

ICOM SETTINGS FOR FT8/FT4 WSJT-X		
ITEM	CHOICE	COMMENT
MODE	Select USB-D. Touch the current mode (USB LSB, whatever it is) on the screen and you'll get the options	Software should do this for you if set for RIG = ICOM 700. CATControl: Serial Port chosen correctly. (CHECK USING DEVICE MANAGER IF NOT WORKING) Baud rate 9600 and defaults work, Polling interval 2 seconds PTT Method CAT MODE: Data/Pkt Split Operation: Fake It
To get a solid tone:	Use TUNE button on WSJT-X	

You can use right up to 150 Watts output CW with our amplifiers. .

TYPICAL POWER SETTINGS		
Total Output Power	150 Watts into a TUNED antenna tuner presenting roughly 50 ohms impedance to the station.	<p>This is the power class we are using for our operation.</p> <p>Our power measurements are inexact and only accurate when the TUNER is tuned to present 50 ohms to the station.</p>
Typical FT8 7300 % power needed to excite the amplifier to 150 watts output	<p>With no bandpass filter: 80Meter CW: approx 24% (24 watts from transmitter)</p> <p>20Meter CW: approx 15-20%</p> <p>With Bandpass Filter:</p>	<p>ASSUMING WSJT-X PWR SLIDER (right hand side of software) = 0 dB</p>  <p>ASSUMING ICOM 7300 USB MOD Level = 50%</p>
Typical SB-200 amplifier plate current reading when the amplifier is tuned correctly and producing 150 watts output	Approx 200-220 mA	About 80 mA = idling plate current. So perhaps only 150mA of this is RF? .

TYPICAL TUNE UP SEQUENCE

(Try to do this with your transmitted signal in a clear spot so you don't QRM other users)

☐ **Tune the Antenna Tuner** using the Icom 7300 alone (*amplifier in barefoot mode*) Now the station sees 50 ohms.

NOTE

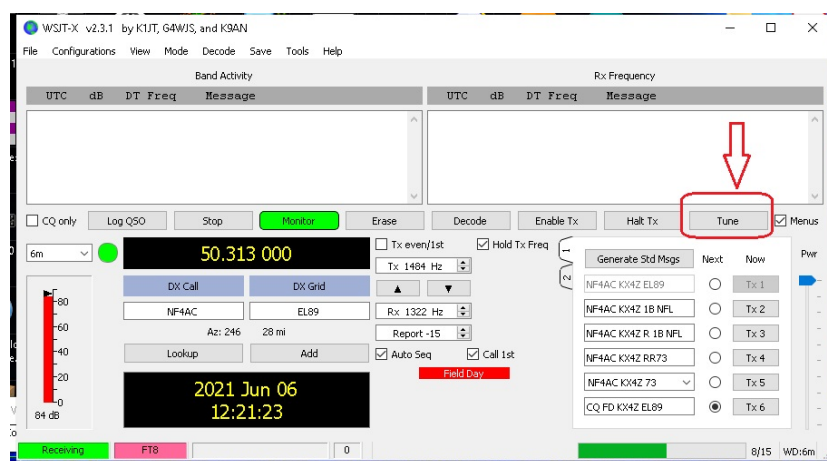
For the digital techniques, there is a pretty substantial benefit for getting the amplifier going -- it allows you to move from 50W output solid digital transmission from the ICOM7300, to 150W output solid digital -- 4.7 dB stronger signal. The ICOM 7300 just can't do 100W solid digital -- that's too much heating for it. The amplifier is able to LOAF at 150W digital output.

☐ **Pre-Set the Amplifier LOAD Capacitor** as per the pen markings on the front panel, and basically don't bother further with it.

☐ **Pre-Set the Amplifier TUNE Capacitor** per the markings and the band you're using. We will more finely adjust this as it is important.

☐ **Enable** the Amplifier, (switch on the front of the Amplifier)

☐ Generate a steady signal from the transceiver by using the TUNE button on your WSJT-X application:



☐ **Promptly adjust the amplifier TUNE capacitor for peak OUTPUT RF** on ANYTHING that shows your relative output power -- such as

- Micronta Radio Shack SWR Meter
- SB-200 "Rel Pwr" meter setting
- even (last ditch) the LED bargraph on the LDG Antenna Tuner

and note the power (WATTS) on the power output monitor.

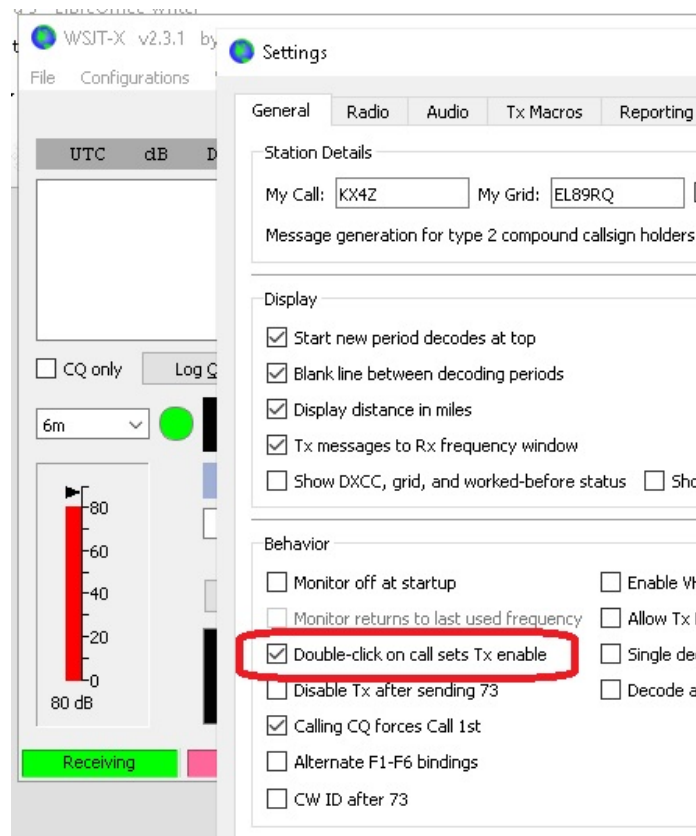
Adjusting that amplifier TUNE capacitor for peak OUTPUT RF is the single most important step. Once that is done reasonably well, this amplifier is so tough you just can't hurt it or distort at these piddling 150W output levels.

☐ **Adjust the 7300 output power level to get the OUTPUT RF = 150 Watts.** (You can adjust the 7300 output power in real time while sending a tone.) *In FT8/FT4 from then on your power will remain pretty constant.*

☐ Proceed to make FT8/FT4 contacts normally.

CONTEST SAVVY: Two Operating Methods

1. Hold a frequency and keep calling CQ.
 - a) in the canned messages, click on the last one, the CQ
 - b) Click "Enable TX" -- it will call CQ continuously.
 - c) Immediately after each completed QSO, re-click to re-enable TX. -- or else UNCLICK the setting "Disable TX after sending 73" -- (FILE | Settings | General) thus it will keep transmitting a new CQ for you automatically.
 - d) You will probably want **Tx Even/1st** selected so that your CQ is on even time periods.
- 2 Hunt and pounce on other people calling CQ. You'll want the program set so that when you double click on their CQ line, it automatically gets ready to call them at next available interval:



Experience has suggested that if they don't reply after a couple of tries, you should MOVE ON to another -- they can't hear you or you are too low in the reply list.

Most stations calling CQ will have "Call 1st" selected to the computer automatically picks the one for them to answer....

There are essentially two time slots in FT8 -- "odd" and "even" based on the last digit of the time stamp. Most people calling CQ will have Tx 1st/Even checked. This is inconsequential if you are hunting and pouncing -- WSJT-X will automatically have your response timed correctly.

Logging

Whenever a QSO is completed, a logging box will show up already filled in with the entries for your just-completed QSO

Click OK to confirm the following QSO:

Call	Start	End
W1AW	6/1/2021 12:19:17	6/1/2021 12:19:17

Mode	Band	Rpt Sent	Rpt Rcvd	Grid	Name
FT8	6m			EL89	

Tx power: ☐ Retain

Comments: ☐ Retain

Operator:

Exch sent: 2B NFL Rcvd: 5A CT

Prop Mode: ☐ Retain

Click OK if the call and exchange look properly filled in. You should quickly get a confirmation that the contact has been logged in our system. It will also be maintained in WSJT-X's internal contest log.

