

# OPERATING FIELD DAY FROM HOME AND AGGREGATING YOUR SCORE WITH A CLUB FIELD DAY: Explanation & Procedures

G. Gibby KX4Z  
JUNE 16, 2021

## Introduction: Explanation of How This Works

Field Day was intended to get amateur operators "out in the field." Until just these COVID-19 virus-plagued years, home stations were discouraged by not allowing them to work other home stations. A couple of Temporary Waivers allow home stations to both work other home station, and to assign their point total to any one club of their choice. Club stations get two listings, one showing their performance in the field, and the other demonstrating their total aggregate score, including the home stations that assigned their points to that club. So in 2021 you can operate from home (in the appropriate Class) and have your score added to that of one club of your choice.

Let's first understand the concept of Field Day station "class."

## FIELD DAY CLASS

Field Day rules define the **Class** of an entry by the characteristics of the station, and prescribe certain limitations on each class. Here is an incomplete list of some of the important information

<b>Class</b>	<b>Definition &amp; Some Limitations<sup>1</sup></b>
A	"Club / non-club portable: Club or a non-club group of three or more persons set up specifically for Field Day. Such stations <b>must be located in places that are not regular station locations and must not use facilities installed for permanent station use</b> , or use any structure installed permanently for Field Day. .... <b>All equipment (including antennas) must lie within a circle whose diameter does not exceed 300 meters (1000 feet).</b> " <b>Emphasis added.</b>  (Ed: <i>home stations cannot be Class A</i> )
A - Commercial	A, but operated with commercial power
A - Battery	"All contacts must be made using an output power of 5 Watts or less and the power source must be something other than commercial power mains or motor-driven generator (e.g.: batteries, solar cells, water driven generator)."
B	One or two person portable
C	Mobile stations
D	"Home stations: Stations operating from permanent or licensed station locations using

<sup>1</sup> See here for the Rules: <https://contests.arrl.org/ContestRules/Field-Day-Rules.pdf>

	commercial power. Class D stations may only count contacts made with Class A, B, C, E and F Field Day stations. Temporary rule waivers: For Field Day 2021 only, Class D stations may work all other Field Day stations, including other Class D stations, for points. Class D stations ordinarily may only count contacts made with Class A, B, C, E, and F Field Day stations, but the temporary rule waiver for 2021 allows Class D stations to count contacts with other Class D stations for QSO credit. For 2021 only, Class D and E stations are limited to 150 W Peak Envelope Power (PEP) transmitter output."
E	Home Stations operating on emergency power
F	"Emergency Operations Centers (EOC): An amateur radio station at an established EOC activated by a club or non-club group. Class F operation must take place at an established EOC site. Stations may utilize equipment and antennas temporarily or permanently installed at the EOC for the event. Entries will be reported according to number of transmitters in simultaneous operation. Class F stations are eligible for a free VHF station. At Class 2F they are also eligible for a GOTA station."

### **Waiver Allowing You to Aggregate With One Club**

The Temporary Waiver described within Field Day Rule 7 allows home stations operating in any Class to optionally include a single club name with their submitted results:

7. Scoring.... Temporary rule waiver: For Field Day 2021, an aggregate club score will also be published, which will be the sum of all individual entries indicating a specific club (similar to the aggregate score totals used in ARRL affiliated club competitions). Ordinarily, club names are only published in the results for Class A and Class F entries, but the temporary rule waiver for 2021 allows participants from any Class to optionally include a single club name with their submitted results following Field Day. For example, if Podunk Hollow Radio Club members Becky, W1BXY, and Hiram, W1AW, both participate in 2021 Field Day -- Hiram from his Class D home station, and Becky from her Class C mobile station -- both can include the radio club's name when reporting their individual results. The published results listing will include individual scores for Hiram and Becky, plus a combined scorer all entries identified as Podunk Hollow Radio Club.

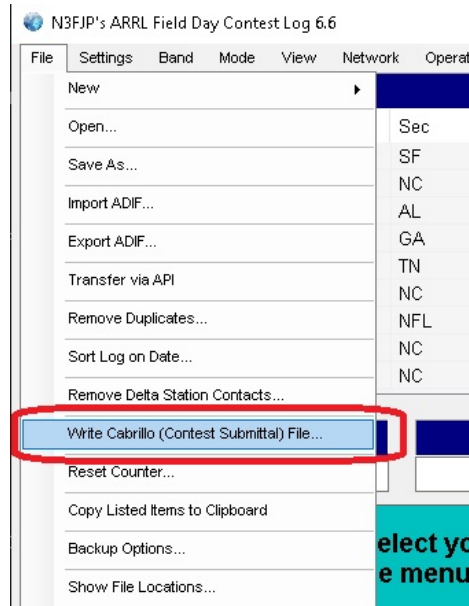
When you are finished with your Field Day effort, you will use N3FJP software to write out your "contest log" for submission. While you can still submit by the U.S. Mail, it is really easy to do it online with their applet: <https://field-day.arrl.org/fdentry.php>

**Cabrillo formatted logs** are common for many contests, and N3FJP software is adept at creating them, but the Field Day accepts also a simpler format known as: **"List of stations worked by band/mode (dupe sheet)"** and N3FJP will guide you to create that file.

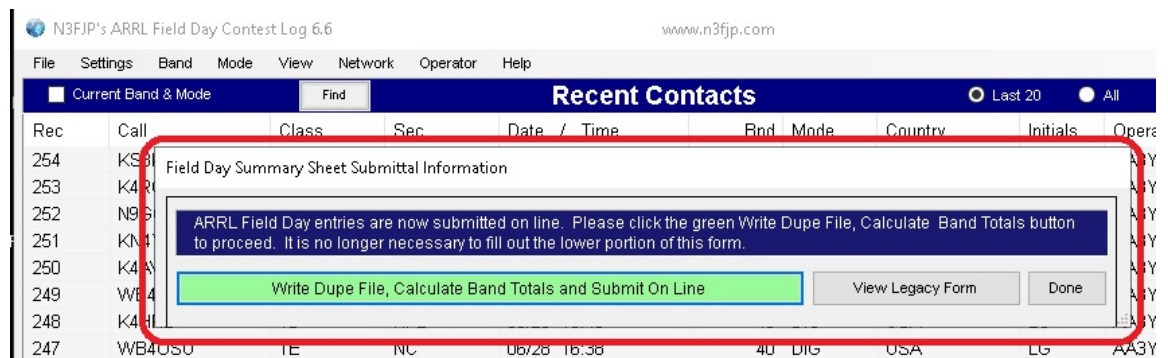
ARRL List of submission documents will state the entry format as:

**Cabrillo log or list of stations worked by band/mode (dupe sheet)**

N3FJP Software provides this option:



After clicking this option, you'll see this explanation:



And that's the file you'll upload to the ARRL

## Getting Started From Home

If you are operating ONE transmitter from home (the most common case) you will be either a 1D (utility power) or 1E (emergency power) station. This, plus your SECTION, is your "Exchange" that you'll send to each contact. I recommend that if you plan to operate from home, you use N3FJP (or other) logging software. This will allow you to keep track of stations you worked in SSB, or CW or digital techniques. If you're familiar with FT8, it will even automatically link to WSJT-X and allow you to have astonishingly easy logging. For SSB or CW you'll have to type in the other station's call and Exchange -- for FT8/FT4 all of that will be done FOR you

N3FJP ARRL Field Day Contesting software is a specific piece of software within the N3FJP products, and can be obtained here:

<https://www.n3fjp.com/>

The specific link to obtain their Field Day contest log is here:

<https://www.n3fjp.com/fieldday.html>

and the download link is here:

<https://www.n3fjp.com/programs/FIELDDAY.exe>

### **Nominal Cost**

You can make up to 30 contacts using their FREE software -- but after that you'll have to have **register** your software (nominal cost under \$10) in order to continue. N3FJP has multiple ways, including online and by check, to make the modest payment.

Once you register, you'll get a passphrase number that (in my experience) works year after year -- so you don't have to re-register each year. Thus it is a one-time-only charge, but it is specific to your call sign.

After you install your N3FJP Field Day Contest Log, it will log your contacts onto a file on your own home computer. There isn't any complicated networking required. Everything right there on your computer. When you are finished, you'll create your "dupe file" as discussed above and file your contest entry with the ARRL per their instructions. While I think it is easiest to utilize their online web applet, you can also file in paper.

### **The Rules**

I recommend that you spend at least a little time reading over the ARRL Field Day Contest rules. You can find these in several places:

Straight from ARRL: <https://contests.arrl.org/ContestRules/Field-Day-Rules.pdf>

At the end of the NF4RC Incident Action Plan (as an appendix):

<https://qsl.net/nf4rc/2021/NFARCDraftICS201.pdf>

The North Florida Amateur Radio Club (<https://www.qsl.net/nf4rc/>) has come up with some "suggestion" documents for how to operate in various modes that, although written for our Class F entry, might also give you tips on frequencies, protocols, shortcuts etc to make your Class D or :Class E effort more successful:

SSB Voice:

<https://qsl.net/nf4rc/2021/SSBContactSuggestions.pdf>

CW:

<https://qsl.net/nf4rc/2021/CWContactSuggestions.pdf>

FT8/FT4:

<https://qsl.net/nf4rc/2021/FT8FT4ContactSuggestions.pdf>

(here there are some astonishing shortcuts that make logging far far easier)

PSK31/RTTY & other Soundcard Modes:

<https://qsl.net/nf4rc/2021/PSK31RTTYContactSuggestions.pdf>

<p>SUGGESTION: If you're planning to operate from home and list a club on your submission, you might wish to notify that club -- they will likely be helpful to you if you have any questions or need advice!</p>
---