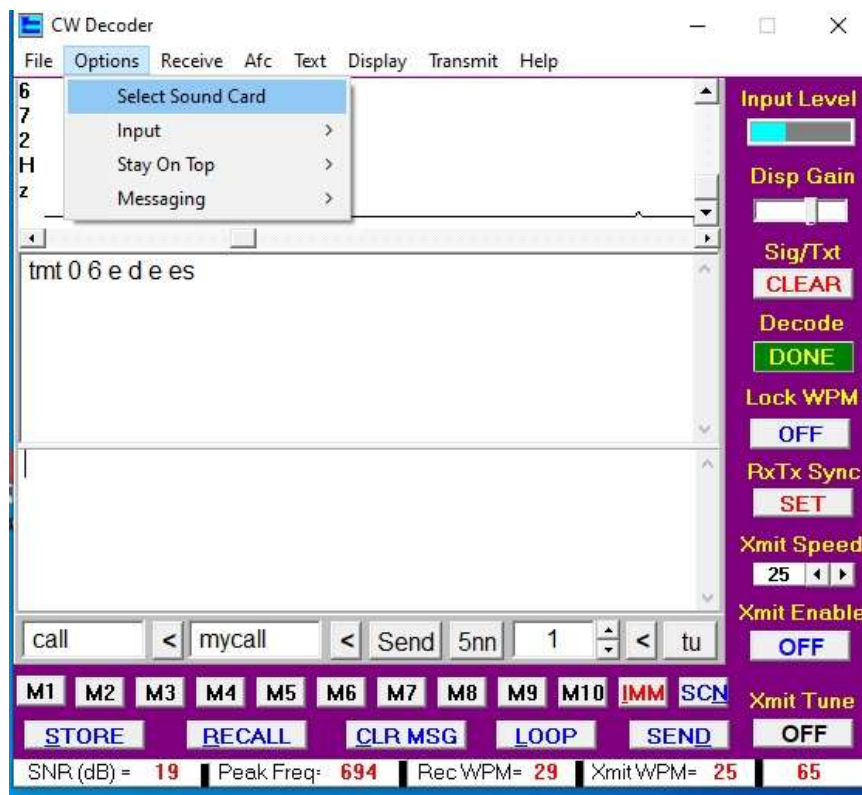


# CW GROWTH NET

## CRUTCHES IF YOU NEED THEM

SOFTWARE if you need help: [http://www.hotamateurprograms.com/Vista\\_Installs/cw\\_decoder.exe](http://www.hotamateurprograms.com/Vista_Installs/cw_decoder.exe)

This software tends to decode much much better than FLDGI. However, I haven't managed to get it to SEND yet. FLDGI, once you figure out how to connect it up, sends CW quite well -- and you should be able to run both software simultaneously. Of course, it is much easier to just wire up a straight key and send the old fashioned way!



Set your SOUND CARD to get the input to work. It comes set for auto-speed. You may not even have to move the cursor in the window to the CW signal -- often it finds it by itself. You can take the output of your receiver and route it to your computer microphone input (maybe through a volume control?) and it should work if you don't have a sound-interface. It may work even with acoustic coupling between your receiver and your computer microphone.

GROWTH NET

**Frequency:** Somewhere around 3.560 MHz (3560 kHz). A lot of transceivers seem to do CW in "lower sideband" mode, so in order to hear an audible tone from a transmitter at 3.560 MHz, you tune your radio just slightly to a higher frequency. Of course, if your radio uses "upper" for CW, it will be the reverse. You'll find us!

**Antenna:** Receiving HF is easy. Even a 20 or 30 foot piece of WIRE outside and up 10-15 feet and you may hear our signals. Transmitting requires a bit more matching. (See: <https://qsl.net/nf4rc/2021/BeginnersCorner-Antennas.pdf> ) You'll wish to have something more like 100+ feet long and either one of our end-fed 49:1 baluns or an antenna tuner. (See: <https://qsl.net/nf4rc/2021/AntennaTuners.pdf> ) Even a homebrew L-match works fine. We built one using a manila envelope-aluminum foil capacitor and a coil wound on PVC pipe at a Tech course and it worked! The ARRL sells an end-fed kit - <http://www.arrl.org/end-fed-half-wave-antenna-kit> If you like to buy already-built stuff, here is one I can heartily endorse: <https://myantennas.com/wp/product/efhw-8010/>

**POWER:** We are likely to hear you with even 5 watts if you have a decent antenna. So even a QRP rig will work.

Net Call: You'll hear CQ ACGN ACGN de KX4Z (or whomever). That stands for Alachua County Growth Net. or, Alachua CW Growth Net.

CW Qsignals for nets tend to start with QN (see page 2 of: <https://www.arrl.org/files/file/Public/%2520Service/fsd218.pdf>) Here are the ones you'll need:

QND - The net has started ("directed")

QNF - The Net is finished ("free")

QNI - Time to check in!!! For our simple net, we'll use a FREE FOR ALL at first and see how that goes -- All you do is send your callsign once, or maybe twice. Then wait to be called back.

QNS - List of stations in the net

QNX -- You're released from the net ("exit")

We'll try to acknowledge EVERYONE who checks in, responding to them at approximately the speed THEY are sending with, and give each person a chance to send a sentence or two. Keep it short especially if you're new and a bit slower.

Remember others on the growth net may not be "speedsters" and don't whizz TOO far faster than them. But every can use the CW Decoder software mentioned above and have a good time decoding our fledgling efforts to improve our ham radio linguistics!