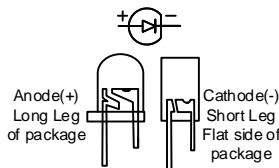
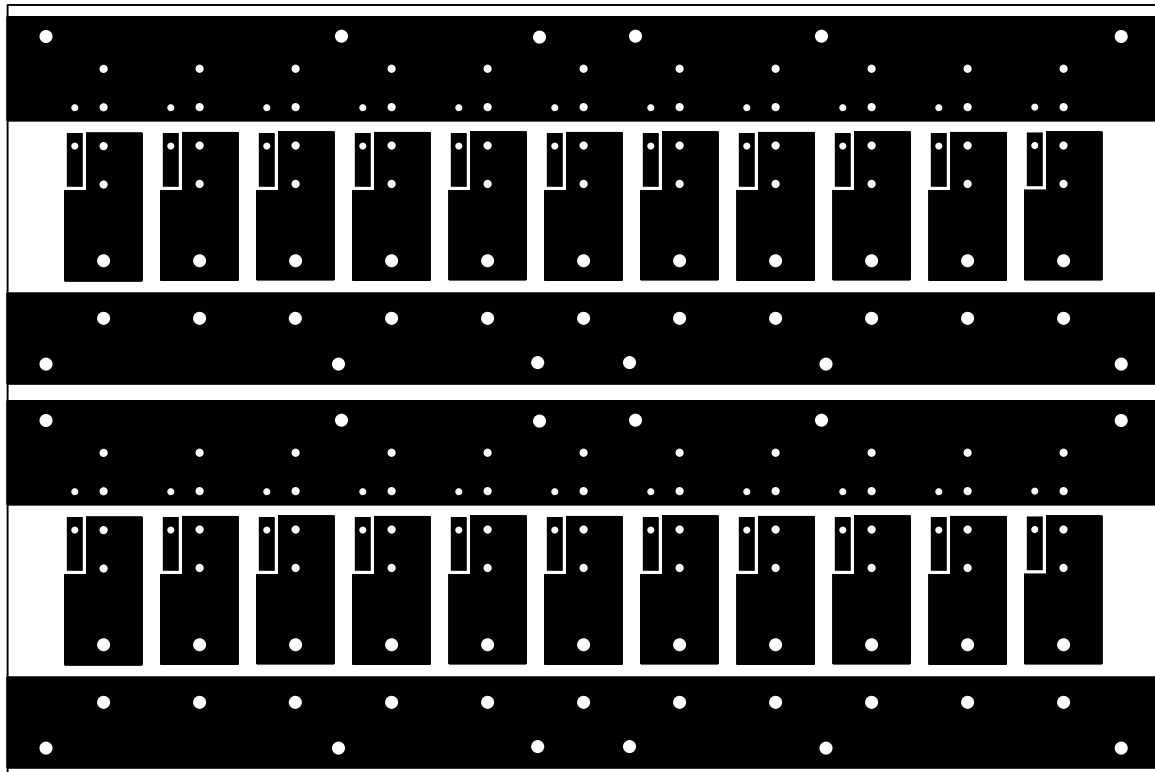


Date	Revision/Addition/ Note	By:
Sep 28, 2017	Initial Drawing.	GSC
Sep 30, 2017	Added option of open fuse indicating LED. Will use 1200 ohm surface mount resistors. And rectangular LED's	GSC
Sep 30, 2017	Added mounting holes	GSC
Sep 30, 2017	Part # for terminals, Mouser 1217080-1	GSC
Oct. 3, 2017	Fuse holder terminals spaced for ATO Style fuses. ATM (Miniature) fuses will fit if desired or in an emergency.	GSC

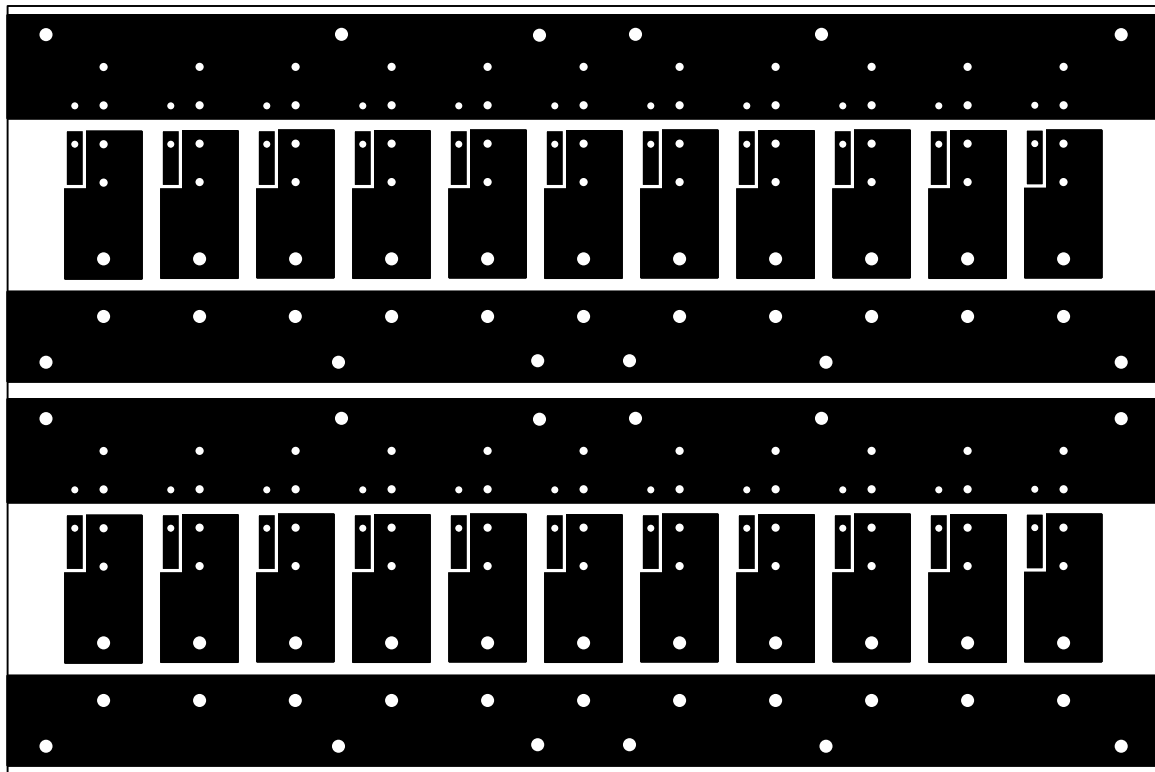


Print
Check
.5"x.5"

Drawn By: Gerald Crenshaw WD4BIS	Date: Sept. 28, 2017	From the bench of: Amateur Radio Station WD4BIS	Page 1
Designed By: Gerald Crenshaw WD4BIS	Date: Sept. 28, 2017		of 1
Checked By: Janet Crenshaw WB9ZPH	Date: Sept. 28, 2017	Title: Anderson Fused DC Distributor	Scale: 1:1



Mirror Image

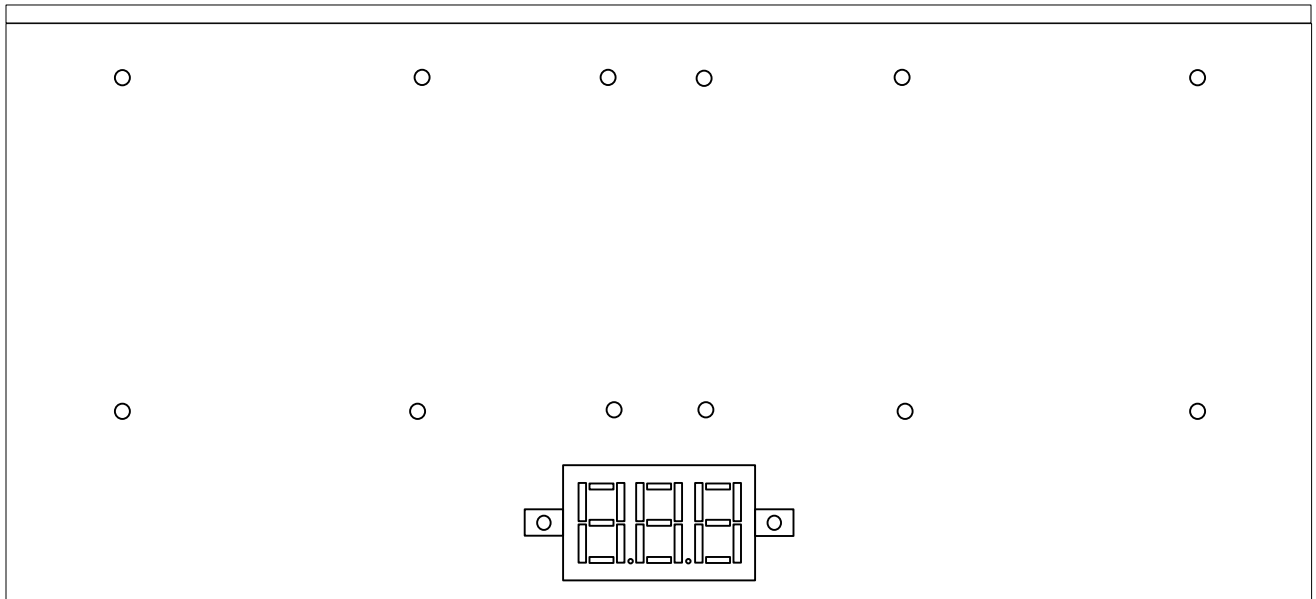


Mirror Image

Print to HP Laserjet P3005, Staples Color Laser Paper, SKU 633215
 Paper/Quality Pro Res 1200 DPI
 Heat press, 300 degrees F for 150 seconds. (2.5 min.)

Print
 Check
 .5"x.5"

Drawn By: Gerald Crenshaw WD4BIS	Date: Sept. 30, 2017	From the bench of: Amateur Radio Station WD4BIS	Page of 1
Designed By: Gerald Crenshaw WD4BIS	Date: Sept. 30, 2017		Title: Anderson Fused DC Distributor Group and Dupe
Checked By: Janet Crenshaw WB9ZPH	Date: Sept. 30, 2017		



Date	Revision/Addition/ Note	By:
Oct. 5, 2017	Initial Drawing.	GSC
Oct. 17, 2017	Mounted the distributor on a Plexiglas plate, with a 90 degree bend on the fuse end to protect the fuses from metallic drops. Matched the mounting holes. Then attached the distributor to the plate and DVM Module with 2-56 screws. Still not good at bending the Plexiglas without a strip heater. Used a heat gun and angle aluminum clamps make the bend.	GSC

Print
Check
.5"x.5"

Drawn By: Gerald Crenshaw WD4BIS	Date: Sept. 28, 2017	From the bench of: Amateur Radio Station WD4BIS	Page of 1
Designed By: Gerald Crenshaw WD4BIS	Date: Sept. 28, 2017		Title: Mounting Plate, Anderson Fused DC Distributor
Checked By: Janet Crenshaw WB9ZPH	Date: Sept. 28, 2017		