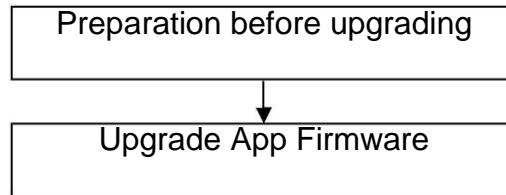


Upgrade Guidance for HD cameras

This firmware is suitable for cameras C1,C1 V2,C1-Lite,C1-Lite V2,FI9800P, FI9800P V2,FI9800W,FI9803P V2,FI9803P V3,FI9815P, FI9815P V2, FI9816P,FI9816P V2,FI9851P V2. Please check your camera model on the bottom sticker. Updating with the wrong firmware could severely damage and/or break your camera.

Note:

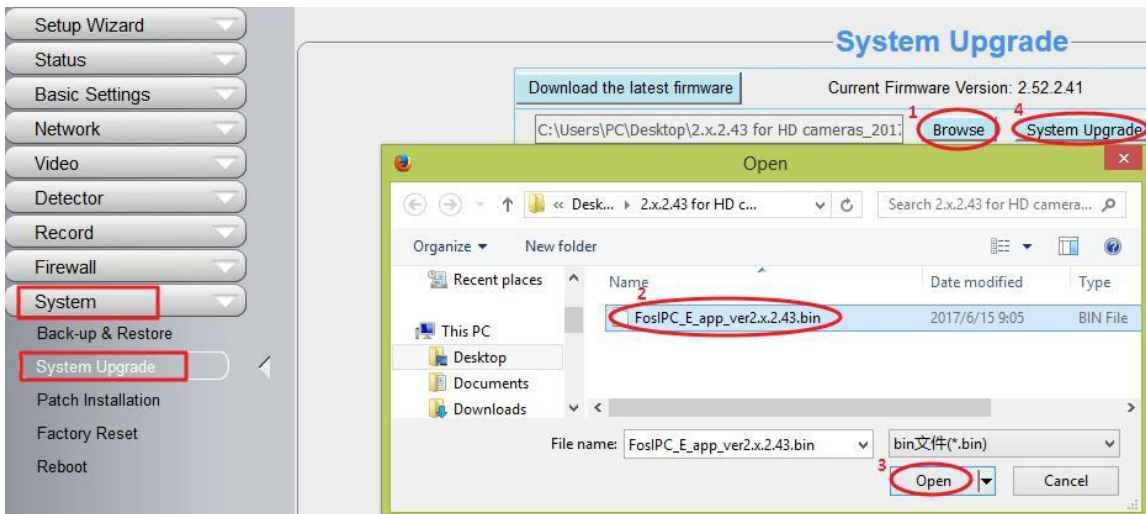
System firmware 1.9.x.1x, App firmware 2.x.1.28, 2.x.1.30, 2.x.1.32, 2.x.1.36, 2.x.1.37 or 2.x.1.39, 2.x.2.5, 2.x.2.16, 2.x.2.33, 2.x.2.37,2.x.2.41 can upgrade to this version.

**Preparation before upgrading:**

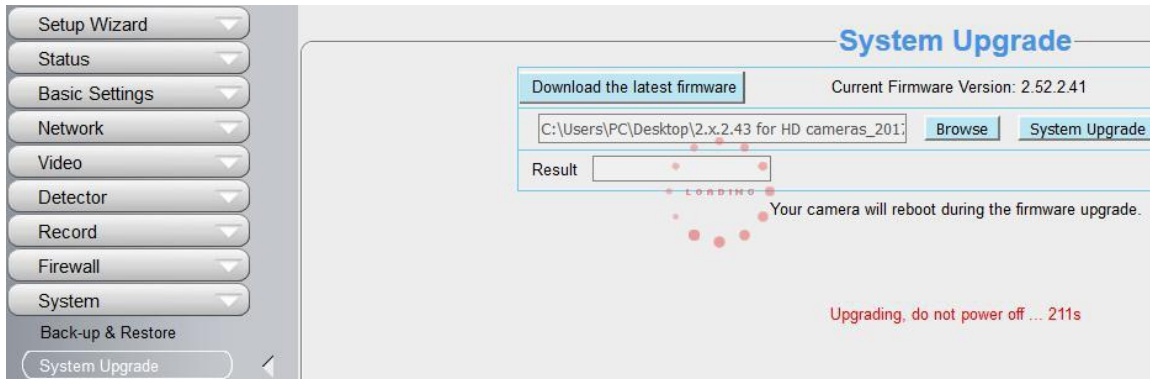
1. Please restart your camera before the upgrading;
2. Connect camera to router with an Ethernet cable before upgrading;
3. DO NOT upgrade firmware via wireless;
4. DO NOT upgrade firmware over Internet, just finish it in LAN;
5. Keep power on during the upgrading;
6. Unplug the SD card before upgrading;
7. Logging your camera as administrator first, upgrade firmware on web page.

Operation 1: Upgrade the app firmware version.

Step 1: Login again, go to **Settings** → **System** → **System Upgrade**. Click **Browse** → choose **FosIPC_E_app_ver2.x.2.43.bin** → click **Open** → Click **System Upgrade**.



Step 2: “Upgrading, do not power off ... Xs” pop up, camera IP will disappear from the IP Camera Tool. **Then camera will reboot itself, DO NOT power off the camera, please wait till the camera IP reappear in the Equipment Search Tool.**



Operation 2: Login again to check the updated **System Firmware Version**, **Application Firmware Version** and **Plug-In Version**.

Device Information	
Refresh	
Camera Model	C1
Camera Name	C1
Camera ID	A0ED795CDA99
Camera Time	2017/06/15 19:07:31
System Firmware Version	1.9.3.18
Application Firmware Version	2.52.2.43
Plug-In Version	3.3.0.31

Congratulations, your camera successfully upgraded to the latest firmware!

Note:

You'd better re-install the plug-in, in case it did not upgraded.

End

--- by Foscam Technical Support Team