

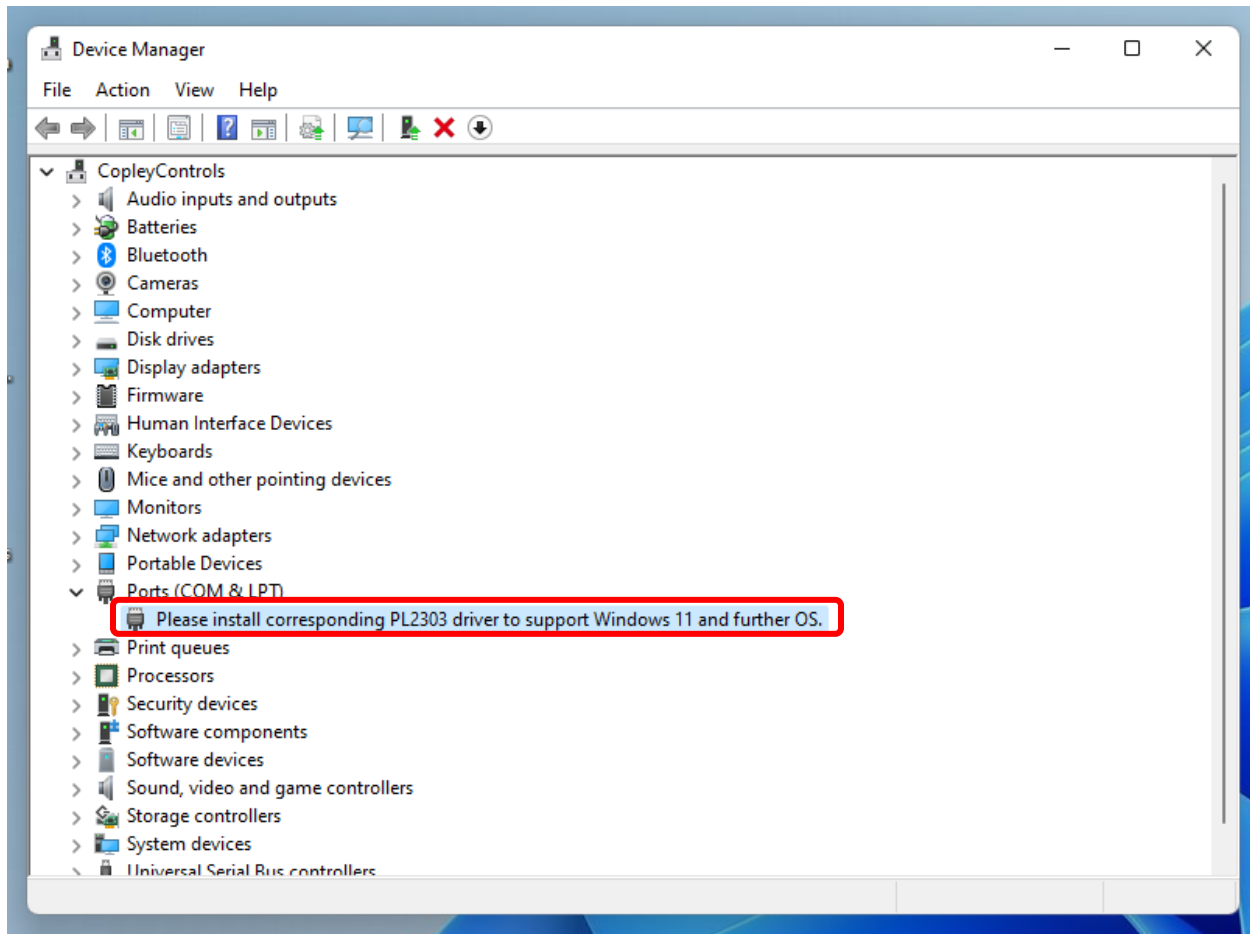
How to fix Windows 11 with Copley SER-USB-RJ11:

Step 1: Run the installer in the zip file “PL2303_Prolific_DriverInstaller_v1.12.0.zip,” which is included with this PDF file.

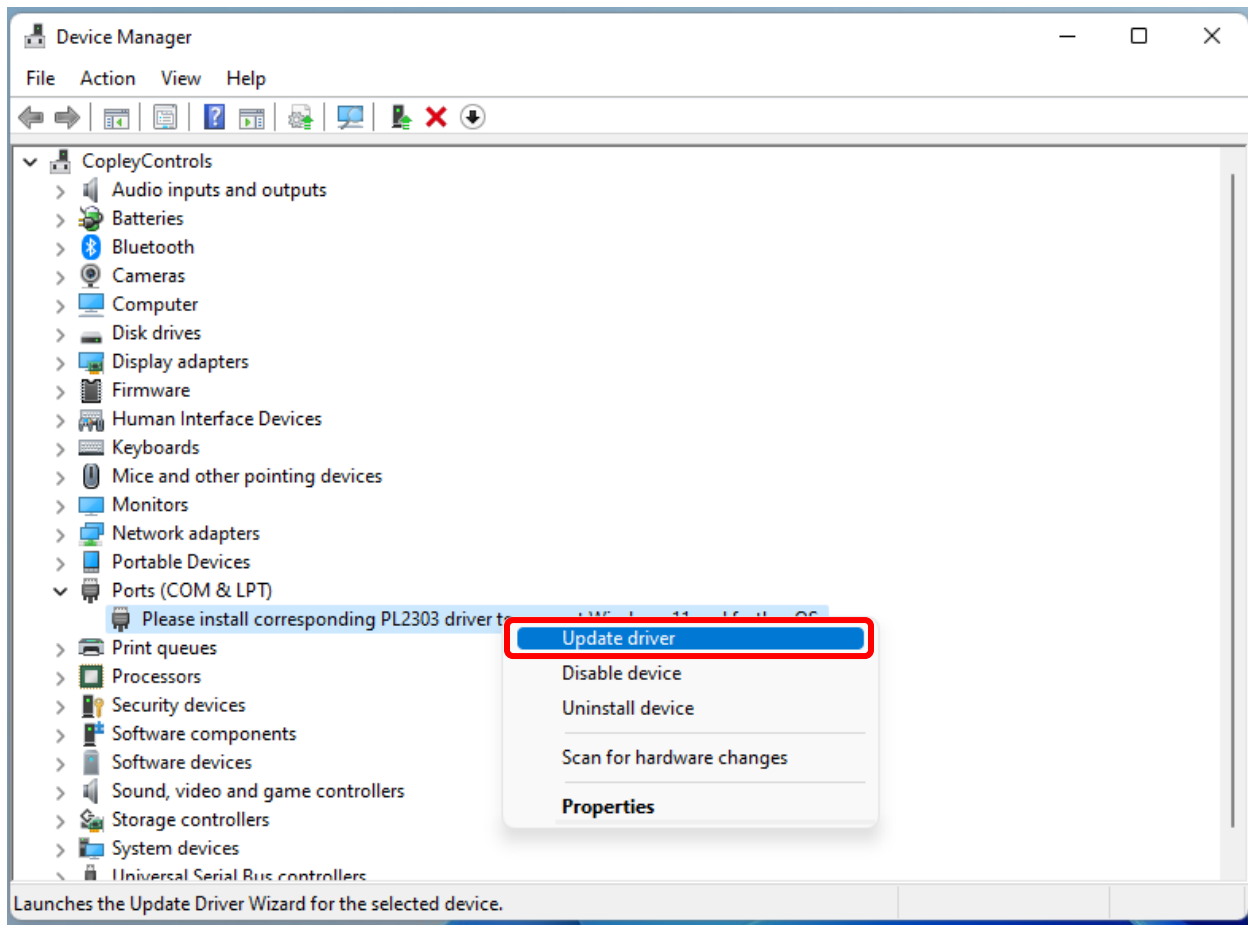
The zip file is also available on the Prolific website in the link below.

Link: http://www.prolific.com.tw/US/ShowProduct.aspx?p_id=223&pcid=126

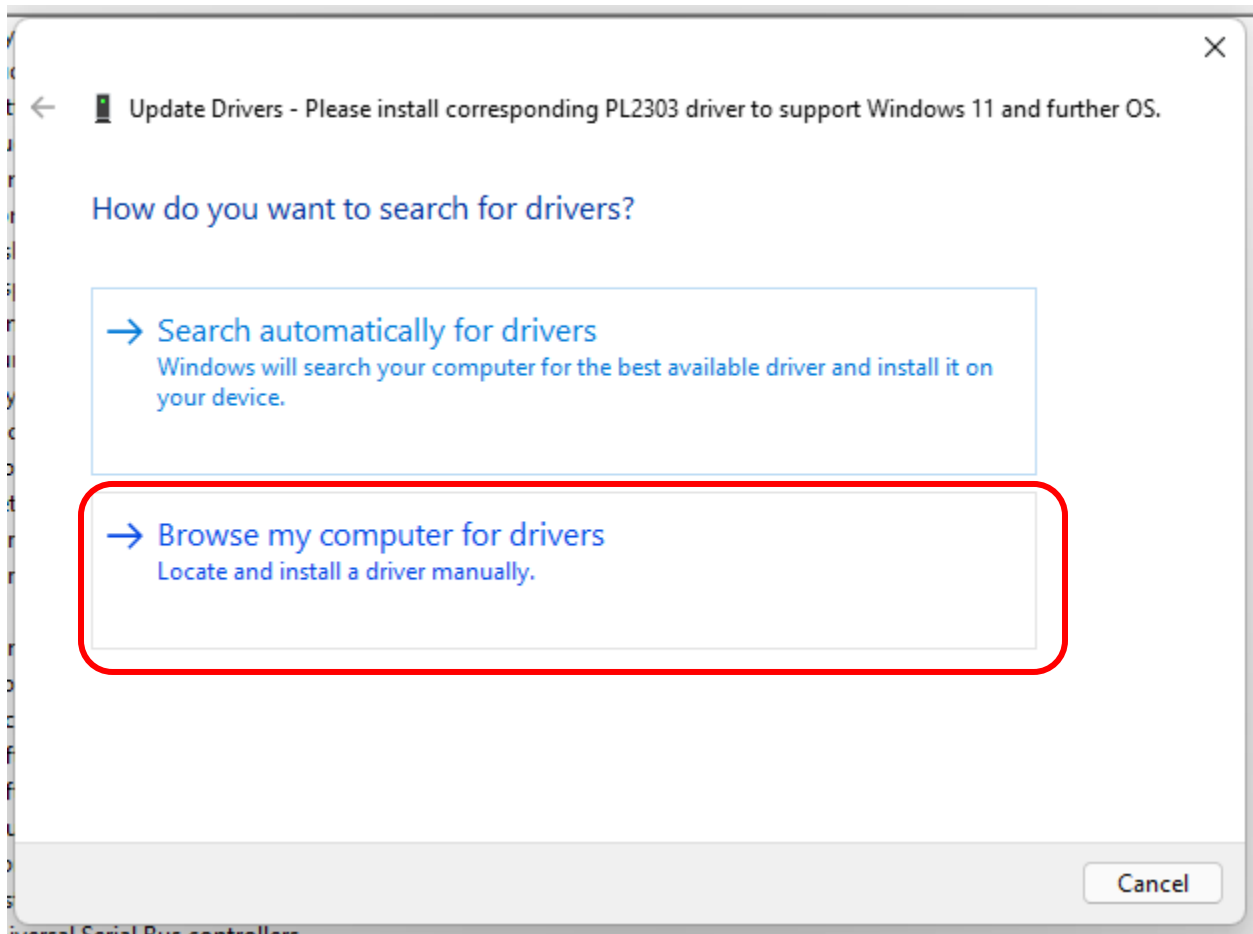
Step 2: Open the Device Manager.



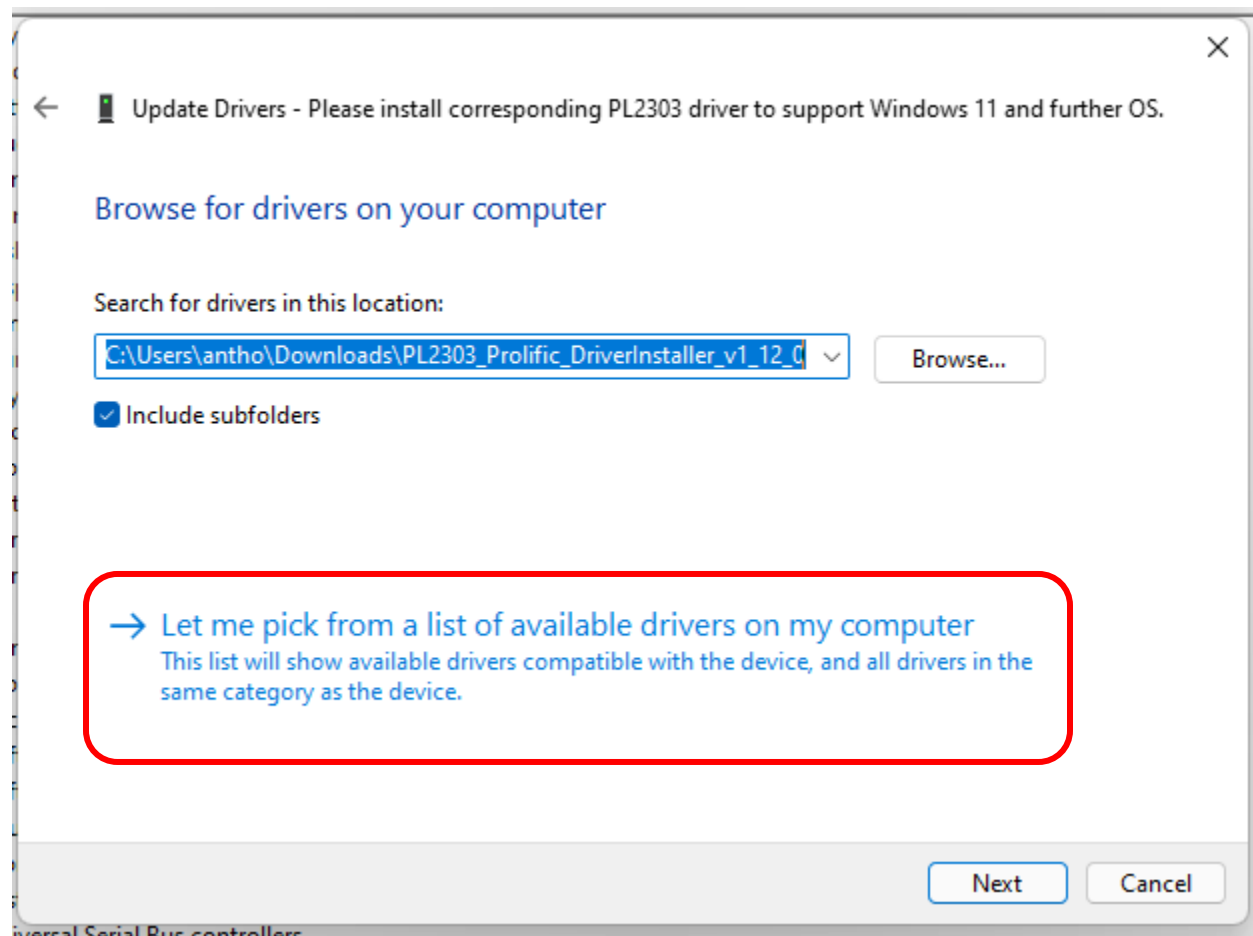
Step 3: Under “Ports (COM & LPT)” select the hardware that displays the message: “Please install corresponding PL2303 driver to support Windows 11 and further OS.” Right-click and select “Update driver.”



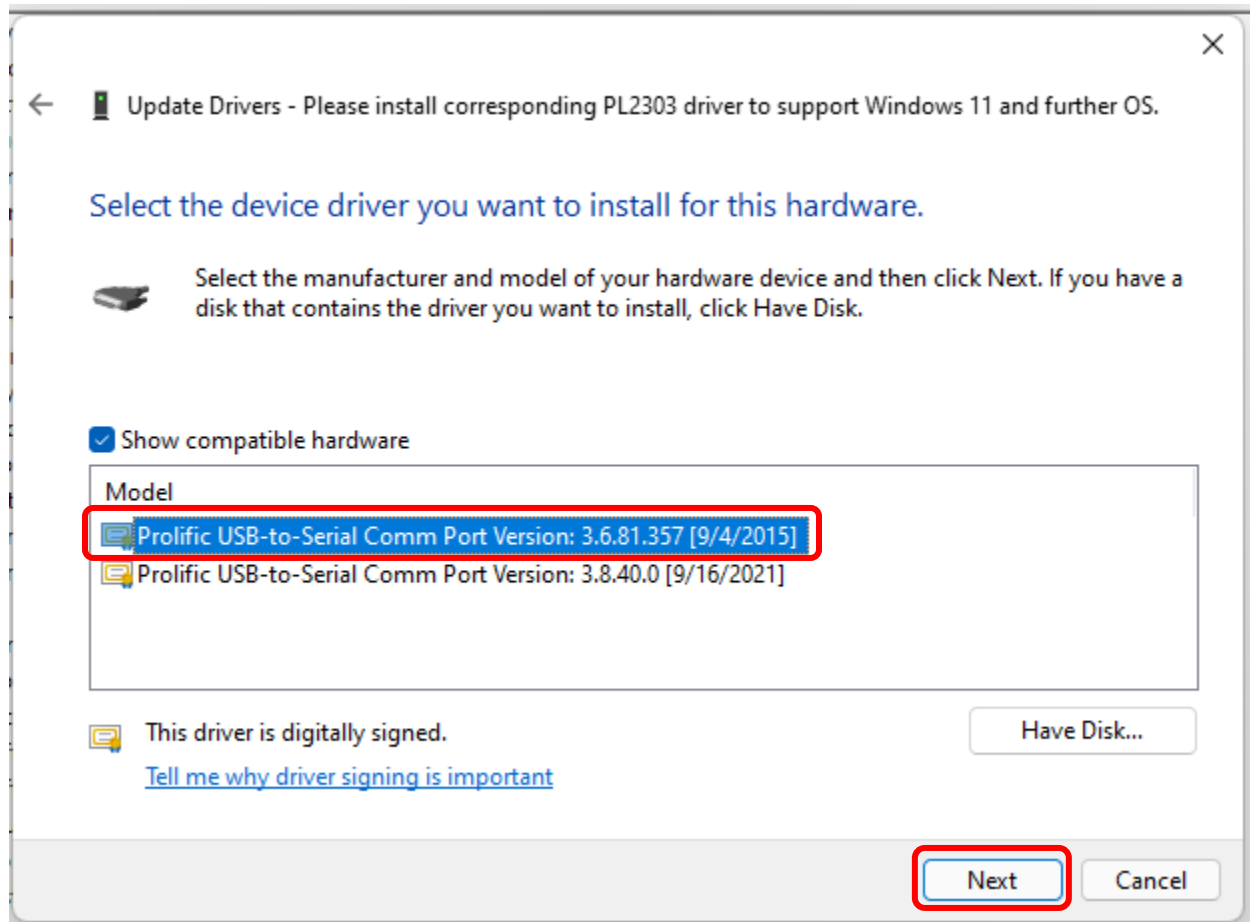
Step 4: Select "Browse my computer for drivers."



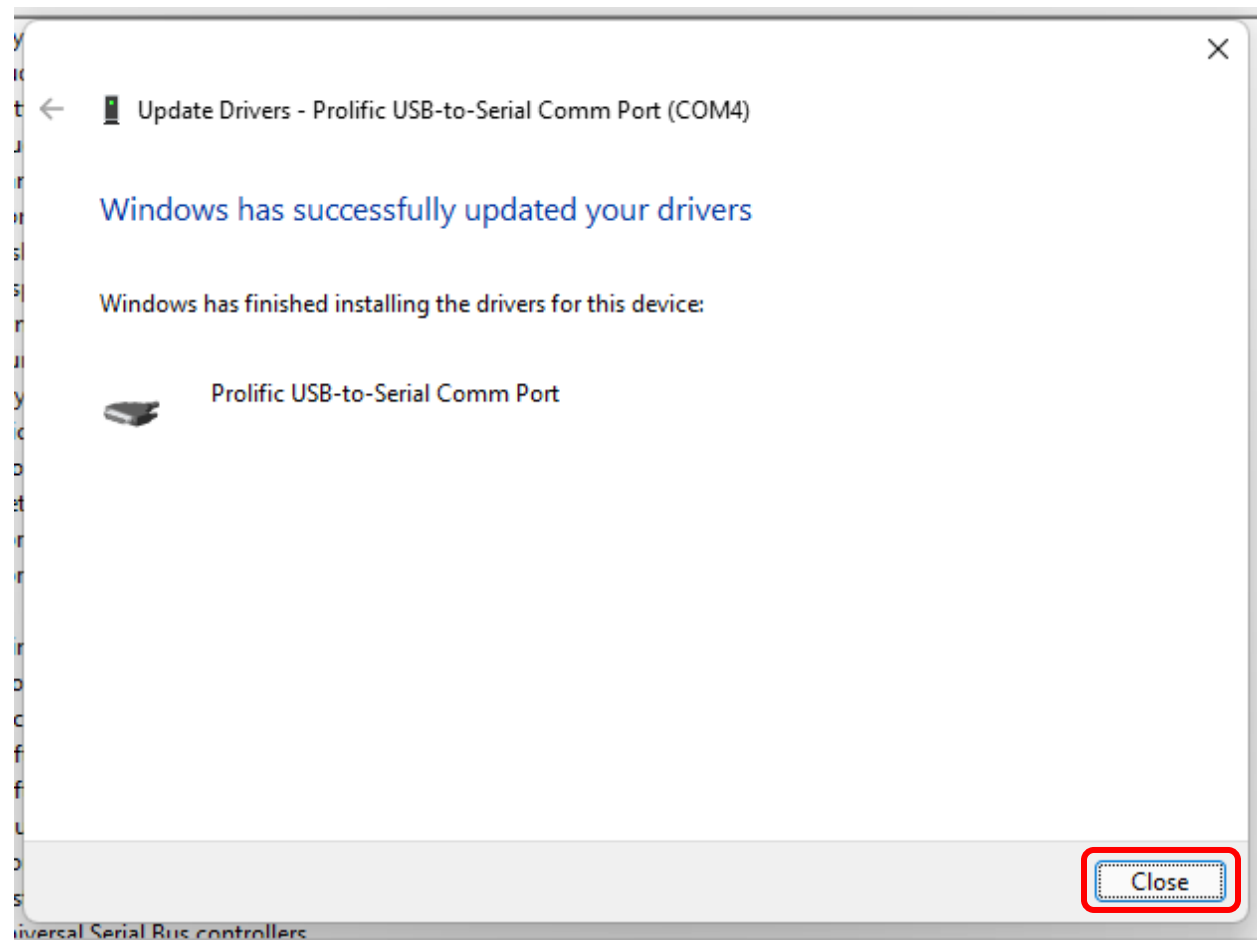
Step 5: Select "Let me pick from a list of available drivers on my computer."



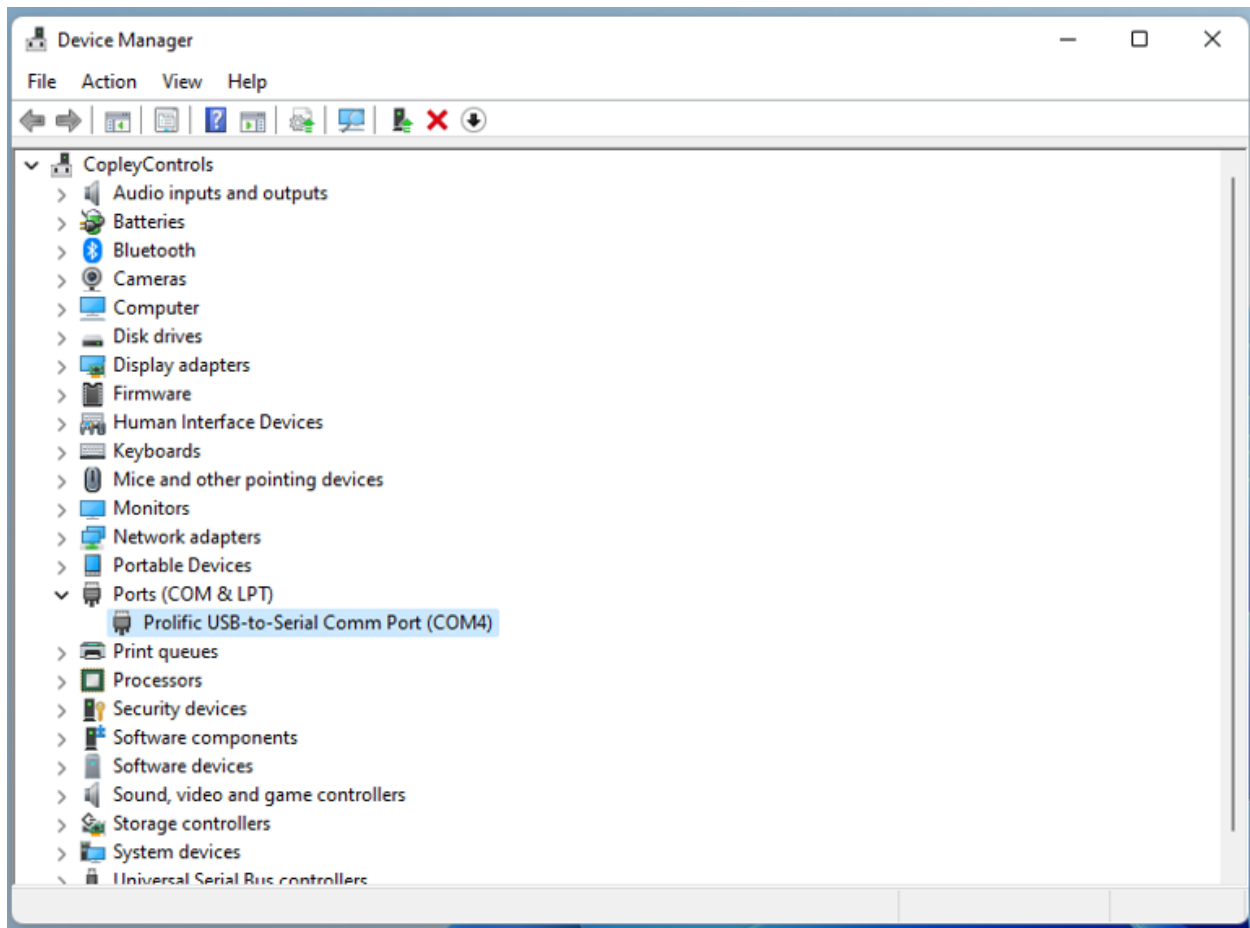
Step 6: Select "Prolific USB-to-Serial Comm Port Version: 3.6.81.357 [9/4/2015]" from the list and click "Next."



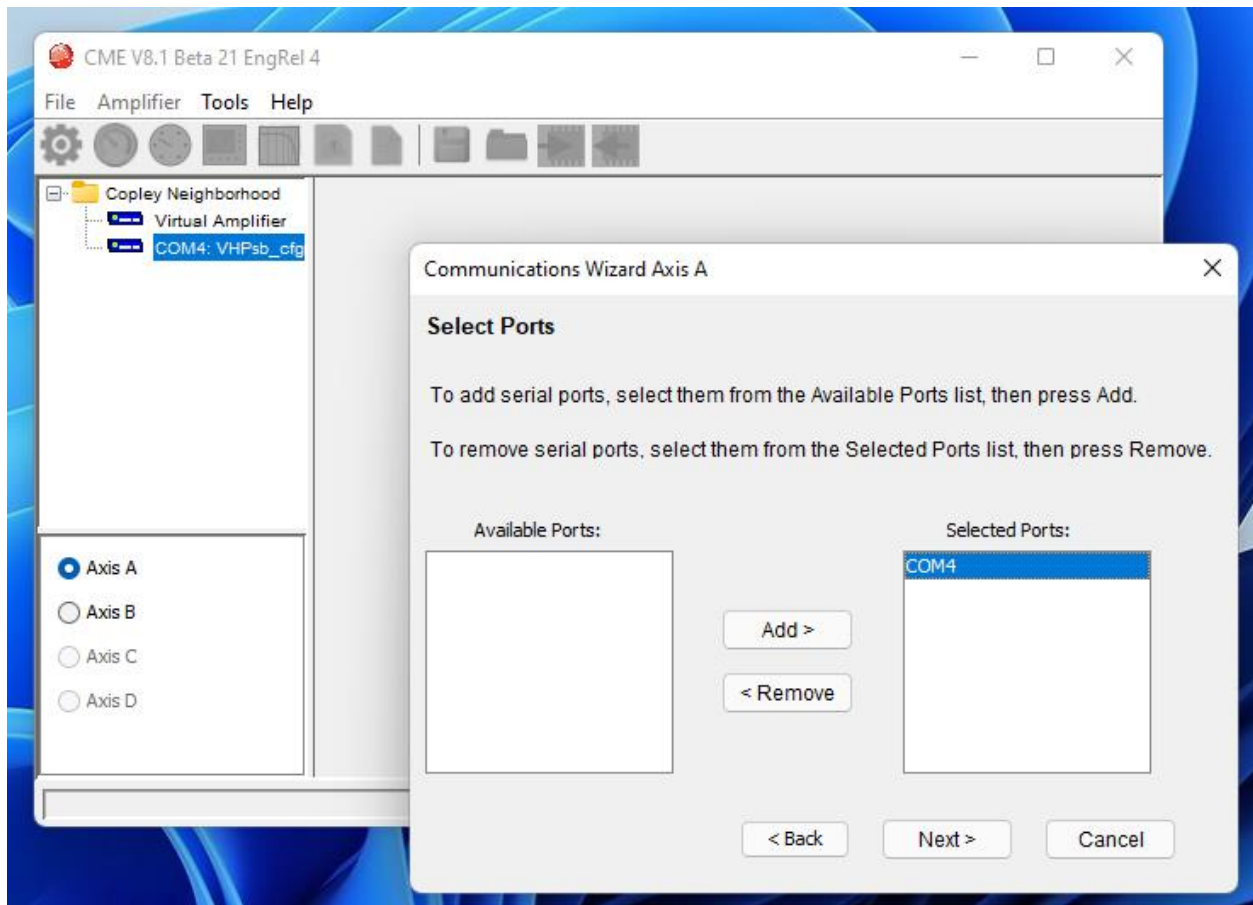
Step 7: The correct drivers are now installed. Click "Close."



The device manager recognizes the device.



CME sees the port.



CME connects.

