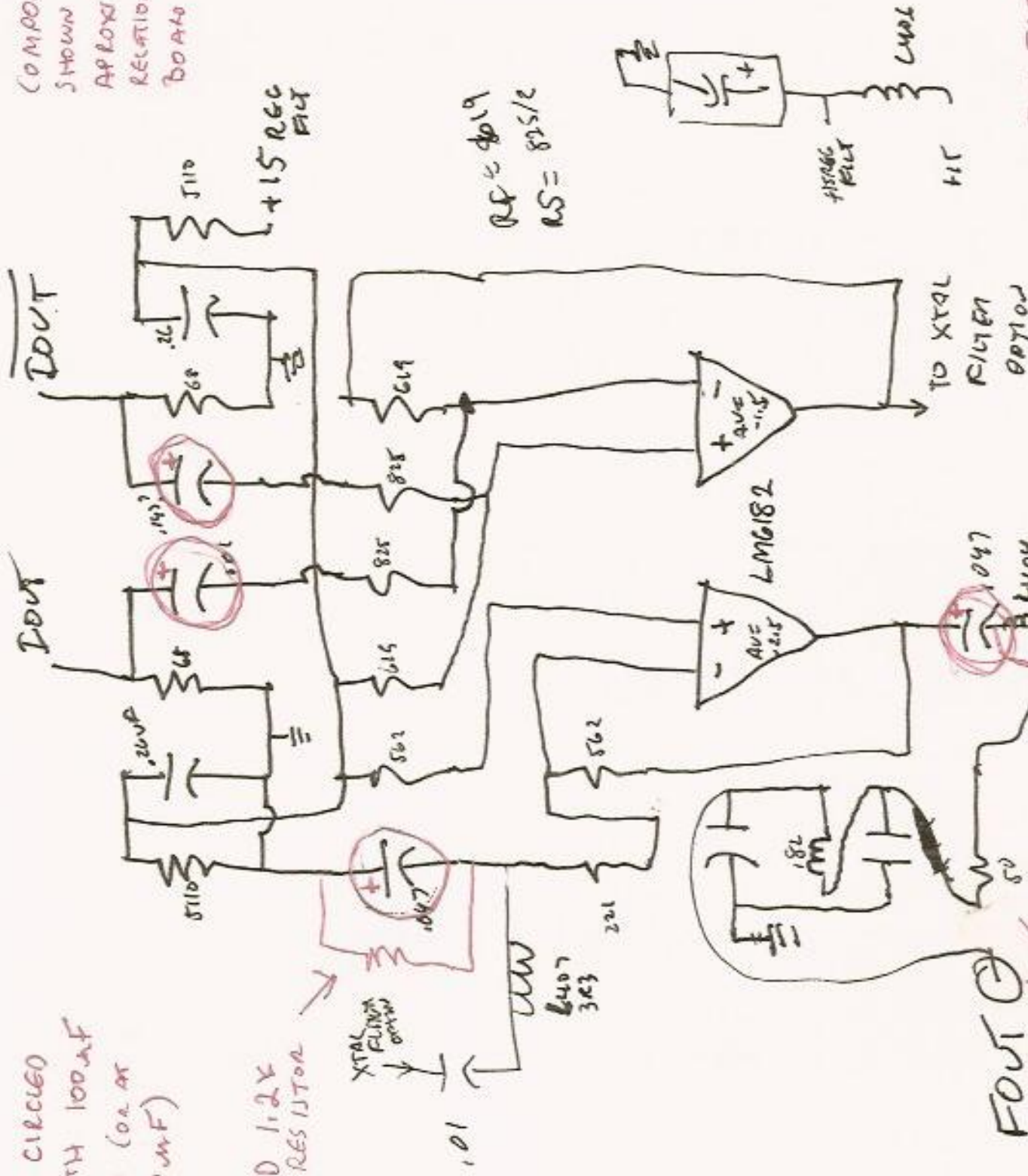


COMPONENTS ARE SHOWN IN THEIR APPROXIMATE PHYSICAL RELATIONSHIPS TO THE BOARD LAYOUT

PARALLEL CIRCUED CAPS WITH 100nF TANTALUMS (OR AT LEAST 10nF)

ADD 1.2K RESISTOR

REMOVE 50Ω TERMINATION RESISTOR ON BACK SIDE OF BOARD



$R_F = 4019$   
 $R_S = 825/2$



FEI-5630A DDS BOARD OUTPUT SECTION

MARK SIMS  
 4 JUL 08